



Prestige
GROUP

Add Prestige to your life



PRESTIGE
NORTH
POINT

A STEP AHEAD OF LIFE!

Continuing its tradition of creating edifices with a difference, here is a Prestige dwelling that is truly a class apart. In the midst of the hubbub of the city rises a mammoth structure, towering over the neighbourhood in Kammanahalli, North Bangalore.

A single elegant high rise tower, Prestige North Point stands tall, making a strong statement.

With the ground and first floors designed exclusively for retail units, 23 floors of premium apartments tower above. Equipped with all amenities like swimming pool, gym and indoor sport, the club house is spread over two floors. Ensclosed in Prestige's signature landscaping and water features, Prestige North Point beckons you to live a calm and quiet life even in the midst of a busy city.

Kammanahalli being a booming suburb, your life here will be one of uniform ease and comfort. The locality is today home to every branded high-street store across the retail spectrum - from McDonald's to Gold's Gym, and Fabindia to Nilgiris. It is in close proximity to tech parks like Manyata Tech Park, while the city's major commercial districts and IT corridors are eminently accessible via the Outer Ring Road. Hospitals of repute like Columbia Asia, Sathya Hospital, and Vasan Eye Clinic, and international schools & colleges such as CMR Public School, Royal Concorde International, Bangalore International School, Vibgyor High and Legacy International, are all close at hand. Quite a few parks add an abundance of greenery and the International Airport is a smooth ride away via the Outer Ring Road.

With a striking combination of tranquility within your home and the adrenaline rush of a metro life without, Prestige North Point is a perfect picture of luxury living.

Stay a step ahead of life. Read on!

*E*xterior view



Artists impression

Master Plan



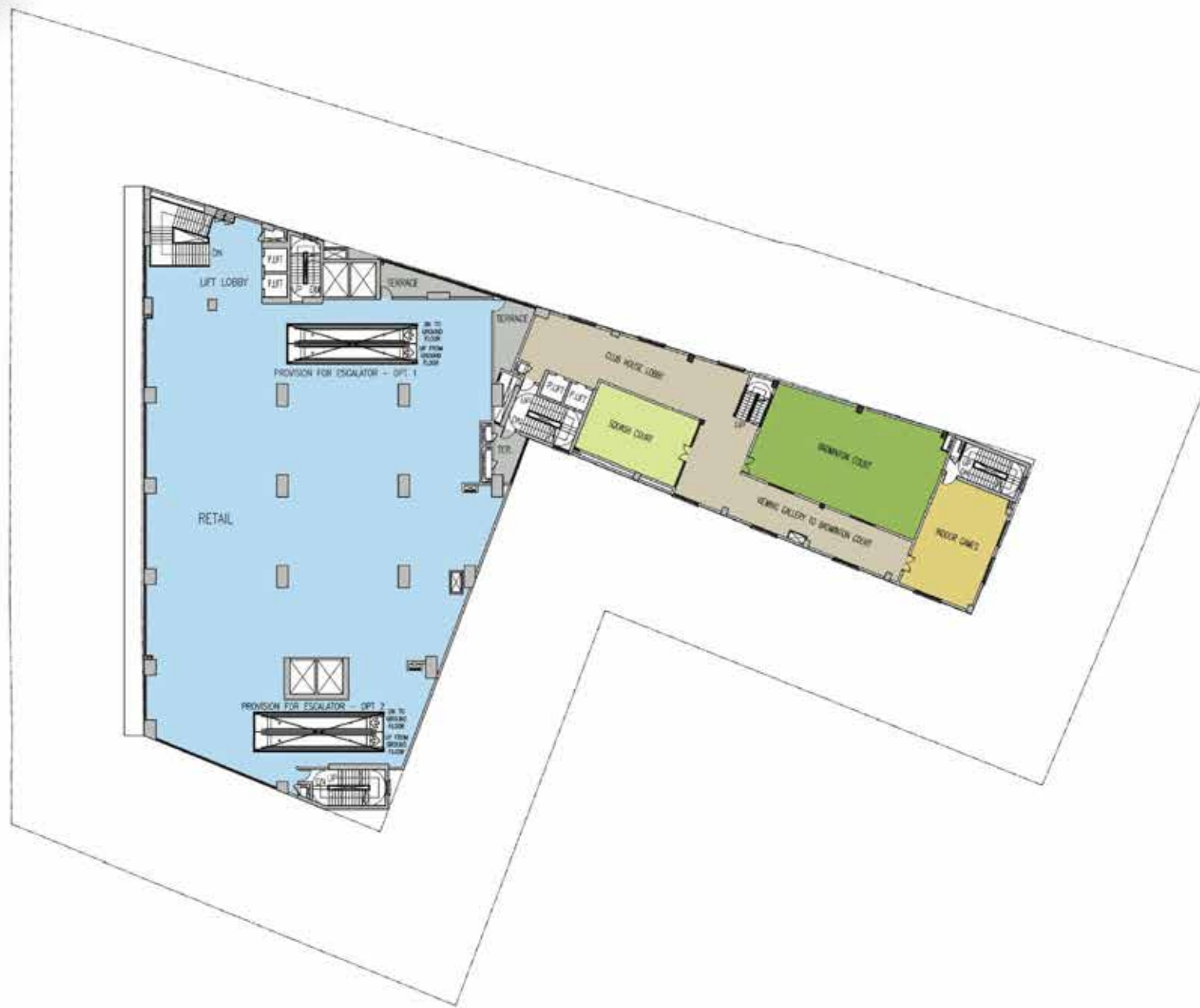
Ground Floor Plan





First Floor Plan





Second Floor Plan



WING B

| COLOUR | TYPE | | No. of Units | SALEABLE AREA | | CARPET AREA | |
|-------------|-----------|------------|--------------|---------------|------|-------------|-----|
| | Unit Type | No. of Bed | | Sqm | Sft | Sqm | Sft |
| Blue | A | 2 Bed | 23 | 121.05 | 1303 | 78.87 | 849 |
| Yellow | B | 2 Bed | 23 | 120.12 | 1293 | 77.67 | 836 |
| Green | C | 2 Bed | 23 | 124.49 | 1340 | 80.17 | 863 |
| Purple | D | 2.5 Bed | 23 | 137.22 | 1477 | 90.02 | 969 |
| Light Green | E | 2.5 Bed | 23 | 138.61 | 1492 | 91.23 | 982 |

WING A

| COLOUR | TYPE | | No. of Units | SALEABLE AREA | | CARPET AREA | |
|--------------|-----------|------------|--------------|---------------|------|-------------|------|
| | Unit Type | No. of Bed | | Sqm | Sft | Sqm | Sft |
| Orange | F | 3 Bed | 23 | 167.60 | 1804 | 112.04 | 1206 |
| Light Orange | G | 3 Bed | 23 | 171.96 | 1851 | 113.81 | 1225 |
| Light Blue | H | 3 Bed | 22 | 185.53 | 1997 | 123.10 | 1325 |
| Dark Blue | H1 | 2 Bed | 1 | 160.35 | 1726 | 104.70 | 1127 |

Third Floor Plan



WING B

| COLOUR | TYPE | | No. of Units | SALEABLE AREA | | CARPET AREA | |
|-------------|-----------|------------|--------------|---------------|------|-------------|-----|
| | Unit Type | No. of Bed | | Sqm | Sft | Sqm | Sft |
| Blue | A | 2 Bed | 23 | 121.05 | 1303 | 78.87 | 849 |
| Yellow | B | 2 Bed | 23 | 120.12 | 1293 | 77.67 | 836 |
| Green | C | 2 Bed | 23 | 124.49 | 1340 | 80.17 | 863 |
| Purple | D | 2.5 Bed | 23 | 137.22 | 1477 | 90.02 | 969 |
| Light Green | E | 2.5 Bed | 23 | 138.61 | 1492 | 91.23 | 982 |

WING A

| COLOUR | TYPE | | No. of Units | SALEABLE AREA | | CARPET AREA | |
|--------------|-----------|------------|--------------|---------------|------|-------------|------|
| | Unit Type | No. of Bed | | Sqm | Sft | Sqm | Sft |
| Orange | F | 3 Bed | 23 | 167.60 | 1804 | 112.04 | 1206 |
| Light Orange | G | 3 Bed | 23 | 171.96 | 1851 | 113.81 | 1225 |
| Light Purple | H | 3 Bed | 22 | 185.53 | 1997 | 123.10 | 1325 |
| Dark Purple | H1 | 2 Bed | 1 | 160.35 | 1726 | 104.70 | 1127 |

Typical Floor Plan



KEY PLAN

WING B

| COLOUR | TYPE | | No. of Units | SALEABLE AREA | | CARPET AREA | |
|-------------|-----------|------------|--------------|---------------|------|-------------|-----|
| | Unit Type | No. of Bed | | Sqm | Sft | Sqm | Sft |
| Blue | A | 2 Bed | 23 | 121.05 | 1303 | 78.87 | 849 |
| Yellow | B | 2 Bed | 23 | 120.12 | 1293 | 77.67 | 836 |
| Green | C | 2 Bed | 23 | 124.49 | 1340 | 80.17 | 863 |
| Purple | D | 2.5 Bed | 23 | 137.22 | 1477 | 90.02 | 969 |
| Light Green | E | 2.5 Bed | 23 | 138.61 | 1492 | 91.23 | 982 |

WING A

| COLOUR | TYPE | | No. of Units | SALEABLE AREA | | CARPET AREA | |
|--------------|-----------|------------|--------------|---------------|------|-------------|------|
| | Unit Type | No. of Bed | | Sqm | Sft | Sqm | Sft |
| Orange | F | 3 Bed | 23 | 167.60 | 1804 | 112.04 | 1206 |
| Light Orange | G | 3 Bed | 23 | 171.96 | 1851 | 113.81 | 1225 |
| Dark Orange | H | 3 Bed | 22 | 185.53 | 1997 | 123.10 | 1325 |
| Grey | H1 | 2 Bed | 1 | 160.35 | 1726 | 104.70 | 1127 |

*E*xterior view



Artists impression

Type-A



KEY PLAN

UNIT-4 (WING B)
TYPE-A

| | Sqft | Sqm |
|-------------|------|--------|
| SALE AREA | 1303 | 121.05 |
| CARPET AREA | 849 | 78.87 |

Type-B



KEY PLAN

UNIT-5 (WING B)
TYPE-B

| | Sqft | Sqm |
|-------------|------|--------|
| SALE AREA | 1293 | 120.12 |
| CARPET AREA | 836 | 77.67 |

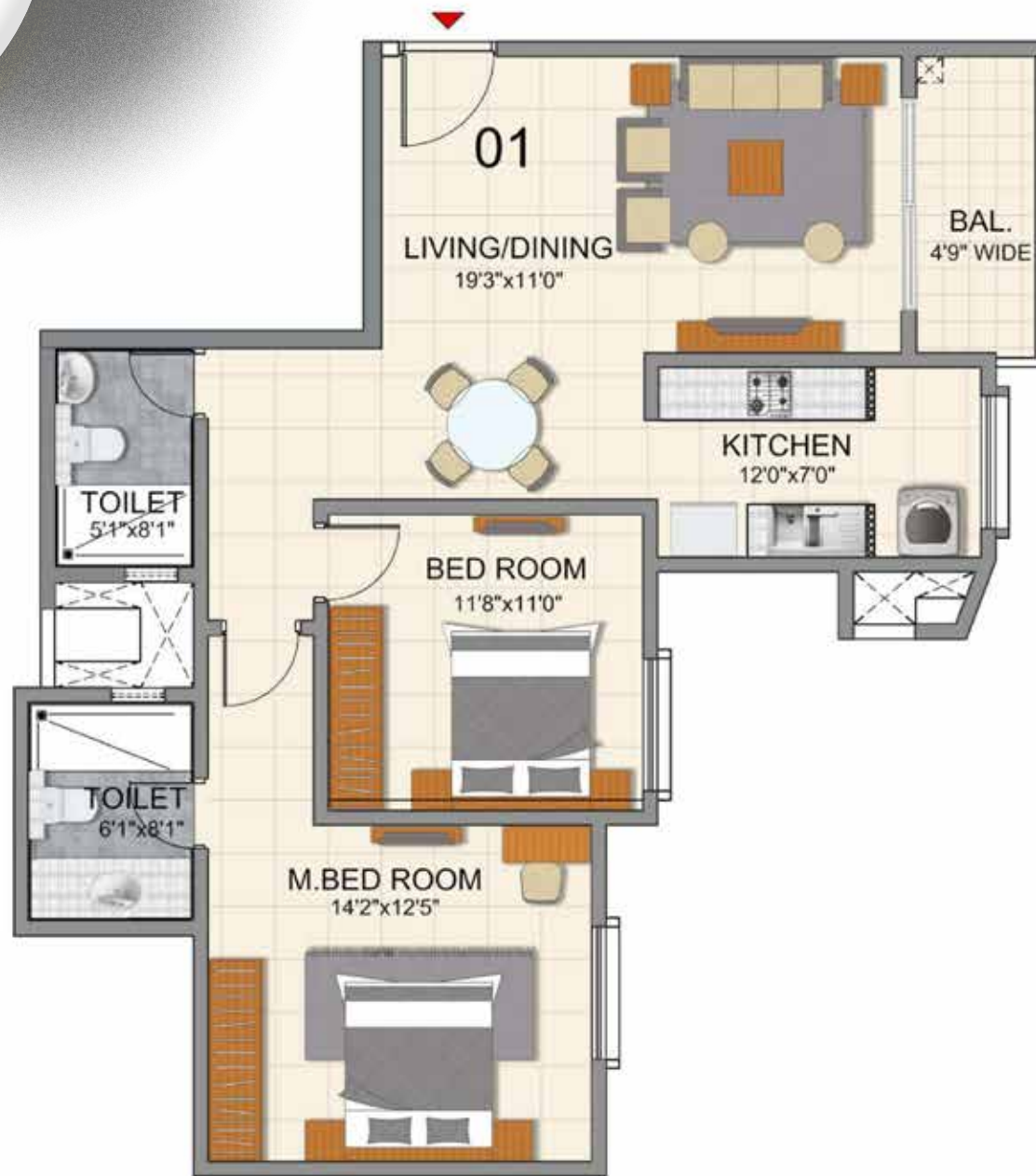
*E*xterior view



Artist's impression



Type C



KEY PLAN

UNIT-1 (WING B)
TYPE-C

| | Sqft | Sqm |
|-------------|------|--------|
| SALE AREA | 1340 | 124.49 |
| CARPET AREA | 863 | 80.17 |

Type-D



KEY PLAN

UNIT-2 (WING B)
TYPE-D

| | Sqft | Sqm |
|-------------|------|--------|
| SALE AREA | 1477 | 137.22 |
| CARPET AREA | 969 | 90.02 |

B edroom



Artist's impression

Type-E



KEY PLAN

UNIT-3 (WING B)
TYPE-E

| | Sqft | Sqm |
|-------------|------|--------|
| SALE AREA | 1492 | 138.61 |
| CARPET AREA | 982 | 91.23 |

Type - F



KEY PLAN

UNIT-3 (WING A)
TYPE-F

| | Sqft | Sqm |
|-------------|------|--------|
| SALE AREA | 1804 | 167.60 |
| CARPET AREA | 1206 | 112.04 |

Type-G



KEY PLAN

UNIT-2 (WING A)
TYPE-G

| | Sqft | Sqm |
|-------------|------|--------|
| SALE AREA | 1851 | 171.96 |
| CARPET AREA | 1225 | 113.81 |



Swimming Pool



Artist's impression

Type-H



KEY PLAN

UNIT-1 (WING A)
TYPE-H

| | Sqft | Sqm |
|-------------|------|--------|
| SALE AREA | 1997 | 185.53 |
| CARPET AREA | 1325 | 123.1 |

Type-H1

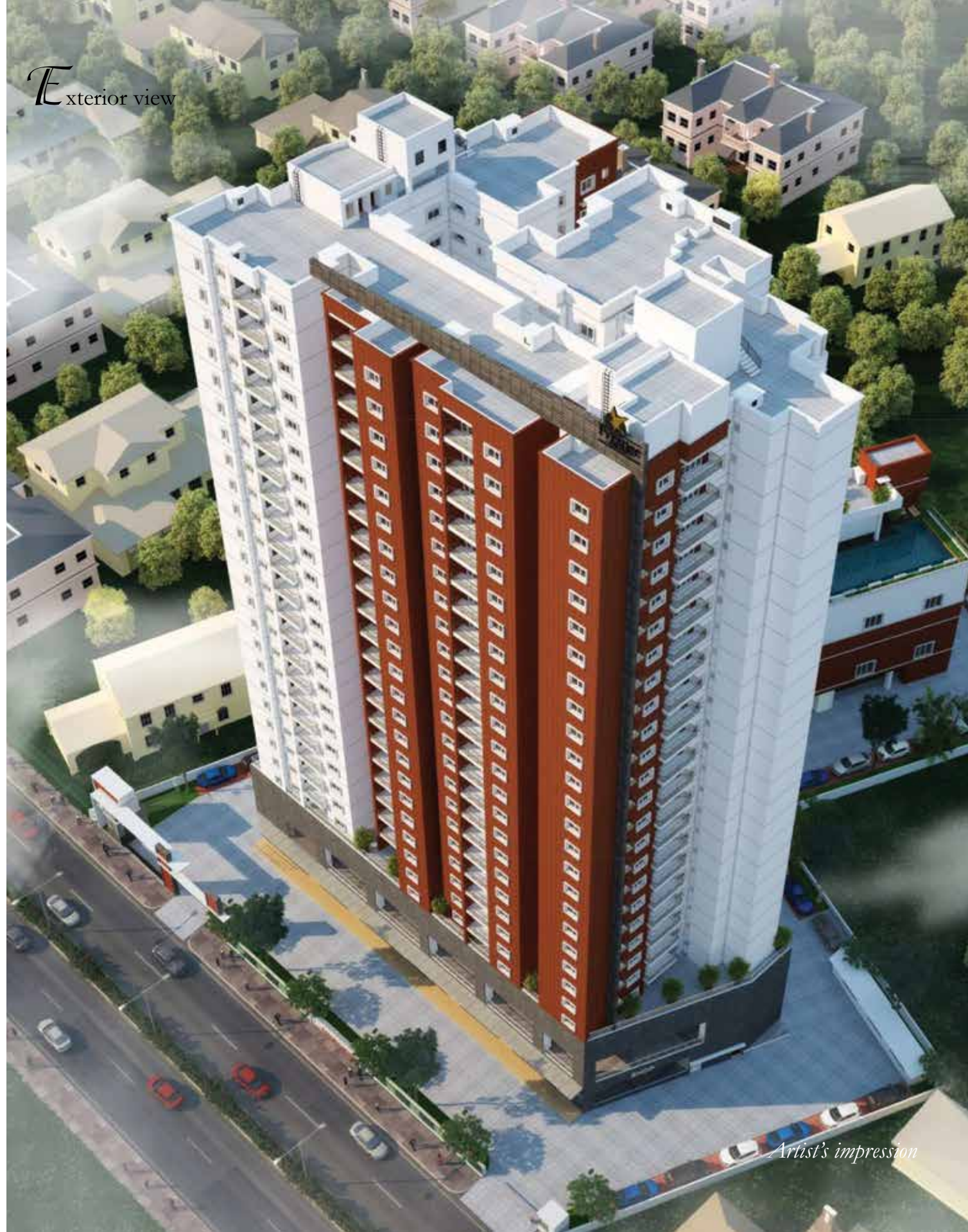


KEY PLAN

UNIT-1 (WING A)
TYPE-H1 (2ND FLOOR)

| | Sqft | Sqm |
|-------------|------|--------|
| SALE AREA | 1726 | 160.35 |
| CARPET AREA | 1127 | 104.70 |

*E*xterior view



Artist's impression

Location Map







Prestige Estates Projects Limited

‘The Falcon House’, No.1, Main Guard Cross Road, Bengaluru - 560 001.
Ph: +91-80-25591080. Fax: +91-80-25591945. E-mail: properties@vsnl.com
www.prestigeconstructions.com



• Bengaluru • Chennai • Goa • Hyderabad • Kochi • Mangaluru • Mysuru

Like us on Facebook • Follow Us on Twitter • Make sure you visit The Falcon Blog, for the latest at Prestige

This brochure is conceptual and has been prepared based on the inputs provided by the Project Architect, this may vary during execution, the Promoter reserves the right to change, alter, add or delete any of the specifications mentioned herein based on site conditions and construction exigencies without prior permission or notice. The external color schemes and detailing of landscape may vary as may be suggested by the Architect considering the site conditions.

The furniture shown in the plans is only for the purpose of illustrating a possible layout and does not form a part of the offering or specifications. All Apartment interior views do not depict the standard wall, color & ceiling finishes which are not part of the offering.

Further, the dimensions mentioned do not consider the plastering thickness and there could be marginal variation in carpet areas.