



PRESTIGE

SONG OF THE SOUTH



WHERE LIFE PLAYS OUT IN FULL COLOR

OFF BANNERGHATTA ROAD

RERA Acknowledgement No:

PHASE 1 - PR/KN/170729/000243



Artist's Impression



***A**dd a new, wonderful melody to your life*

Prestige Song of the South. Exquisitely orchestrated dwellings designed for those who march to a different drumbeat and believe that happiness is never having to compromise.

Set in 36 pristine acres in the fast developing heart of south Bengaluru, just off Bannerghatta Road.

Close to major schools, colleges, hospitals, and shopping malls ensuring that your daily life is convenient and hassle free. Within immediate reach of major transport hubs including the proposed Namma Metro station and eminently accessible from all parts of Bengaluru via expressways and arterial roads.

Finely planned and brilliantly laid out homes in a range of sizes and configurations – from one-bedroom all the way up to four-bedrooms, so that you can choose the home that suits you best.

Fully equipped with all that you need to keep you and your family entertained, fit and occupied. Its sprawling clubhouse and recreational amenities include a Library, Crèche, Mini Theatre, Health Club, Tennis Court, Swimming Pool, Kids' Pool, Outdoor Party Area, Banquet Hall, Gym, 2 Badminton Courts, 2 Squash Courts, Snooker, Table Tennis, other indoor games, Kids' play area, and provision for a Convenience Store.

Read on and discover how you can make new symphonies of happiness in the home.





- LEGEND**
- 1. ENTRY/EXIT
 - 2. CLUB HOUSE
 - 3. SWIMMING POOL
 - 4. PARKS AND OPEN SPACE
 - 5. SERVICES
 - 6. CIVIC AMENITIES
 - 7. ENTRANCE DROP OFF
 - 8. ENTRY RAMPS
 - 9. EXIT RAMPS
 - 10. TENNIS COURT
 - 11. CHILDREN'S PLAY AREA

| BUILDING NO | TOWER NO. | CLUSTER TYPE | NO. OF FLOORS |
|-------------|------------------|--|---------------|
| BUILDING-1 | T-01, T-02, T-03 | 8 UNIT CLUSTER (2.5 BED+ 2 BED) | G+17 FLOORS |
| BUILDING-2 | T-04, T-05 | 8 UNIT CLUSTER (2.5 BED+ 2 BED) 4 UNIT CLUSTER (3BED(L)+ 4 BED) | G+20 FLOORS |
| BUILDING-3 | T-06, T-07 | 8 UNIT CLUSTER (2.5 BED+ 2 BED) 4 UNIT CLUSTER (3BED(L)+ 4 BED) | G+20 FLOORS |
| BUILDING-4 | T-08, T-09 | 8 UNIT CLUSTER (3 BED(S)+ 3 BED(S)) | G+15 FLOORS |
| BUILDING-5 | T-10, T-11 | 8 UNIT CLUSTER (3 BED(L)+ 3 BED(S)) | G+15 FLOORS |
| BUILDING-6 | T-12, T-14 | 12 UNIT CLUSTER (2 BED+ 1 BED) | G+15 FLOORS |
| BUILDING-7 | T-15, T-16, T-17 | 8 UNIT CLUSTER (2.5 BED+ 2 BED) | G+17 FLOORS |

Please note building No.3 & No.4 are part of Phase II development







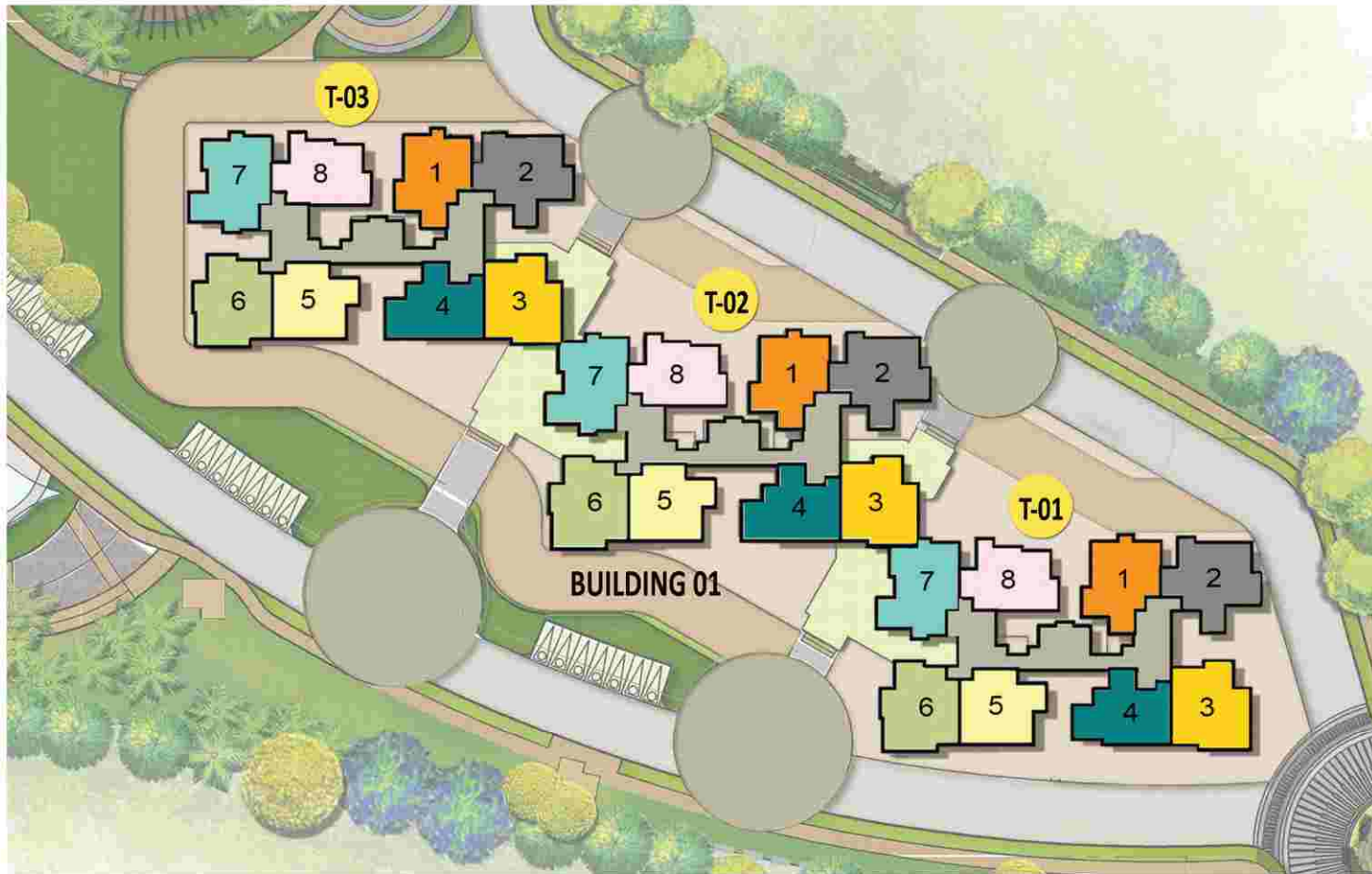
Artist's Impression



| BUILDING NO | TOWER NO. | CLUSTER TYPE | NO. OF FLOORS |
|-------------|------------------|--|---------------|
| BUILDING-1 | T-01, T-02, T-03 | 8 UNIT CLUSTER (2.5 BED+ 2 BED) | G+17 FLOORS |
| BUILDING-2 | T-04, T-05 | 8 UNIT CLUSTER (2.5 BED+ 2 BED) 4 UNIT CLUSTER (3BED(L)+ 4 BED) | G+20 FLOORS |
| BUILDING-3 | T-06, T-07 | 8 UNIT CLUSTER (2.5 BED+ 2 BED) 4 UNIT CLUSTER (3BED(L)+ 4 BED) | G+20 FLOORS |
| BUILDING-4 | T-08, T-09 | 8 UNIT CLUSTER (3 BED(S)+ 3 BED(S)) | G+15 FLOORS |
| BUILDING-5 | T-10, T-11 | 8 UNIT CLUSTER (3 BED(L)+ 3 BED(S)) | G+15 FLOORS |
| BUILDING-6 | T-12, T-14 | 12 UNIT CLUSTER (2 BED+ 1 BED) | G+15 FLOORS |
| BUILDING-7 | T-15, T-16, T-17 | 8 UNIT CLUSTER (2.5 BED+ 2 BED) | G+17 FLOORS |

Please note building No.3 & No.4 are part of Phase II development

| COLOURE | Type | No Of Units | SUPER BUILT UP AREA (SMT) | (SFT) |
|-----------------|------|-------------|---------------------------|-------|
| [Red] | A | 256 | 60 | 644 |
| [Blue] | B1 | 30 | 111 | 1197 |
| [Pink] | B2 | 30 | 111 | 1198 |
| [Orange] | B3 | 75 | 112 | 1210 |
| [Yellow] | B4 | 75 | 112 | 1211 |
| [Light Blue] | B5 | 75 | 113 | 1212 |
| [Green] | B6 | 32 | 113 | 1220 |
| [Light Green] | B7 | 75 | 113 | 1221 |
| [Dark Green] | B8 | 32 | 114 | 1223 |
| [Brown] | B9 | 75 | 114 | 1227 |
| [Light Orange] | B10 | 75 | 114 | 1232 |
| [Light Purple] | B11 | 75 | 115 | 1235 |
| [Dark Blue] | B12 | 75 | 115 | 1241 |
| [Yellow-Orange] | C1 | 71 | 126 | 1358 |
| [Light Green] | C2 | 75 | 127 | 1366 |
| [Grey] | C3 | 75 | 127 | 1368 |
| [Red-Orange] | C4 | 71 | 127 | 1372 |
| [Purple] | C5 | 73 | 128 | 1374 |
| [Orange] | C6 | 73 | 128 | 1374 |
| [Teal] | C7 | 67 | 128 | 1375 |
| [Brown] | C8 | 73 | 128 | 1376 |
| [Grey] | D1 | 32 | 147 | 1583 |
| [Dark Red] | D2 | 32 | 148 | 1588 |
| [Cyan] | D3 | 32 | 148 | 1591 |
| [Yellow] | D4 | 32 | 149 | 1600 |
| [Light Pink] | D5 | 32 | 150 | 1613 |
| [Orange] | D6 | 32 | 150 | 1614 |
| [Light Blue] | D7 | 32 | 150 | 1614 |
| [Purple] | D8 | 32 | 150 | 1618 |
| [Blue] | D9 | 30 | 151 | 1622 |
| [Brown] | D10 | 30 | 151 | 1624 |
| [Green] | D11 | 32 | 152 | 1631 |
| [Brown] | D12 | 32 | 152 | 1634 |
| [Light Green] | E1 | 32 | 177 | 1902 |
| [Light Green] | E2 | 32 | 177 | 1907 |
| [Light Green] | E3 | 30 | 179 | 1922 |
| [Dark Blue] | E4 | 30 | 179 | 1927 |
| [Teal] | E5 | 42 | 179 | 1929 |
| [Dark Brown] | E6 | 40 | 180 | 1933 |
| [Pink] | F1 | 40 | 229 | 2462 |
| [Purple] | F2 | 40 | 229 | 2467 |

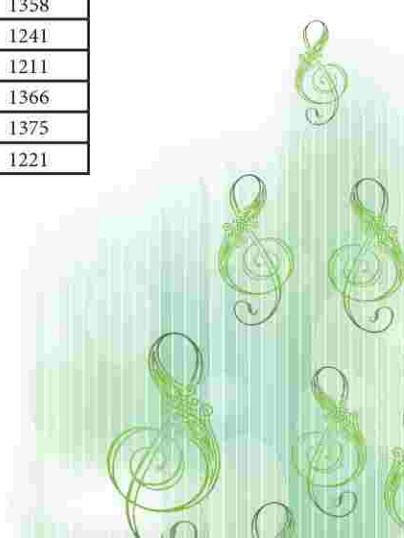


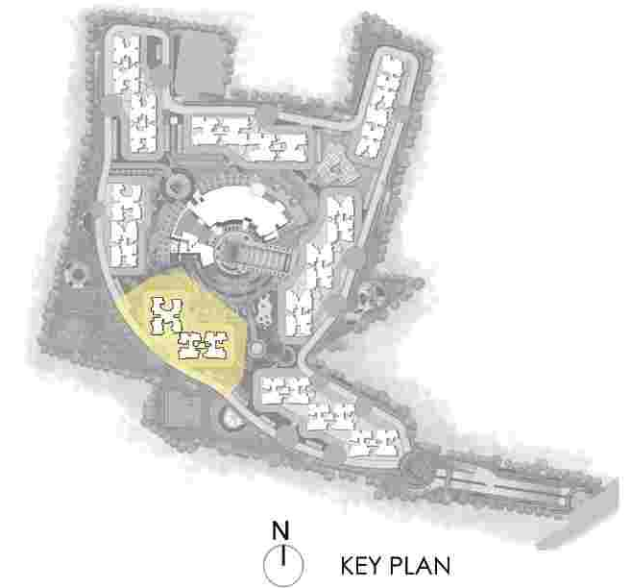
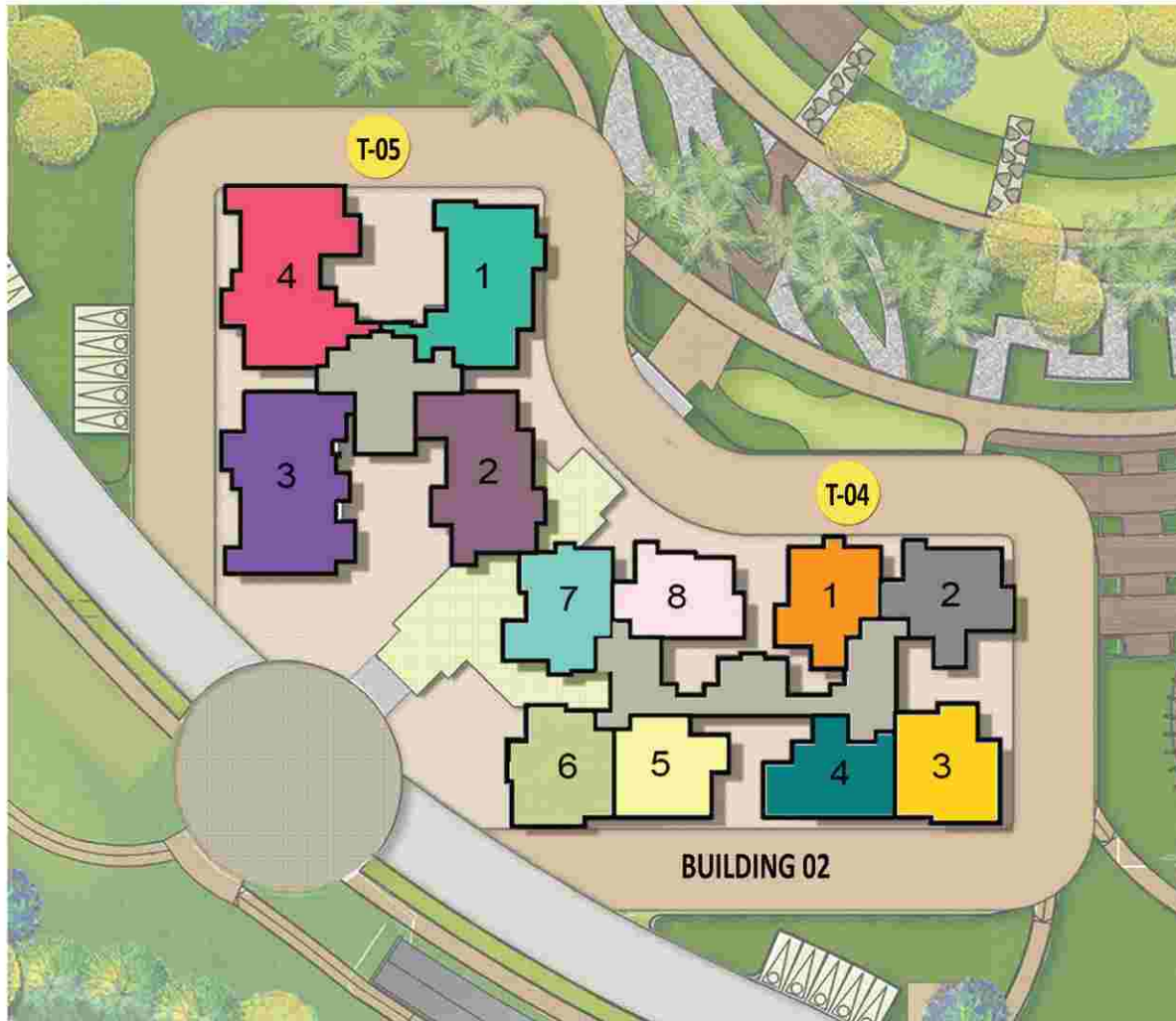
KEY PLAN

| BUILDING -01 TOWER 1 | | | | |
|----------------------|------|-------------|---------------------------------|------|
| COLOURE | Type | No Of Units | SUPER BUILT UP AREA (SMT) (SFT) | |
| 1 | B10 | 18 | 114 | 1232 |
| 2 | C3 | 18 | 127 | 1368 |
| 3 | C1 | 18 | 126 | 1358 |
| 4 | B12 | 18 | 115 | 1241 |
| 5 | B4 | 18 | 112 | 1211 |
| 6 | C2 | 18 | 127 | 1366 |
| 7 | C7 | 16 | 128 | 1375 |
| 8 | B7 | 18 | 113 | 1221 |

| BUILDING -01 TOWER 2 | | | | |
|----------------------|------|-------------|---------------------------------|------|
| COLOURE | Type | No Of Units | SUPER BUILT UP AREA (SMT) (SFT) | |
| 1 | B10 | 18 | 114 | 1232 |
| 2 | C3 | 18 | 127 | 1368 |
| 3 | C1 | 16 | 126 | 1358 |
| 4 | B12 | 18 | 115 | 1241 |
| 5 | B4 | 18 | 112 | 1211 |
| 6 | C2 | 18 | 127 | 1366 |
| 7 | C7 | 16 | 128 | 1375 |
| 8 | B7 | 18 | 113 | 1221 |

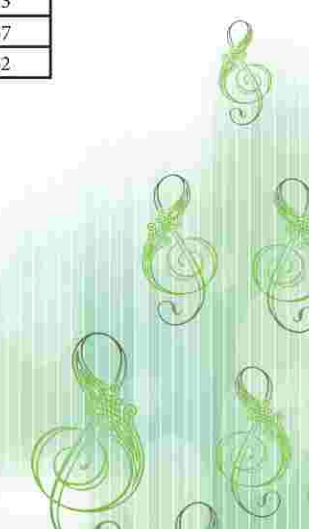
| BUILDING -01 TOWER 3 | | | | |
|----------------------|------|-------------|---------------------------------|------|
| COLOURE | Type | No Of Units | SUPER BUILT UP AREA (SMT) (SFT) | |
| 1 | B10 | 18 | 114 | 1232 |
| 2 | C3 | 18 | 127 | 1368 |
| 3 | C1 | 16 | 126 | 1358 |
| 4 | B12 | 18 | 115 | 1241 |
| 5 | B4 | 18 | 112 | 1211 |
| 6 | C2 | 18 | 127 | 1366 |
| 7 | C7 | 18 | 128 | 1375 |
| 8 | B7 | 18 | 113 | 1221 |



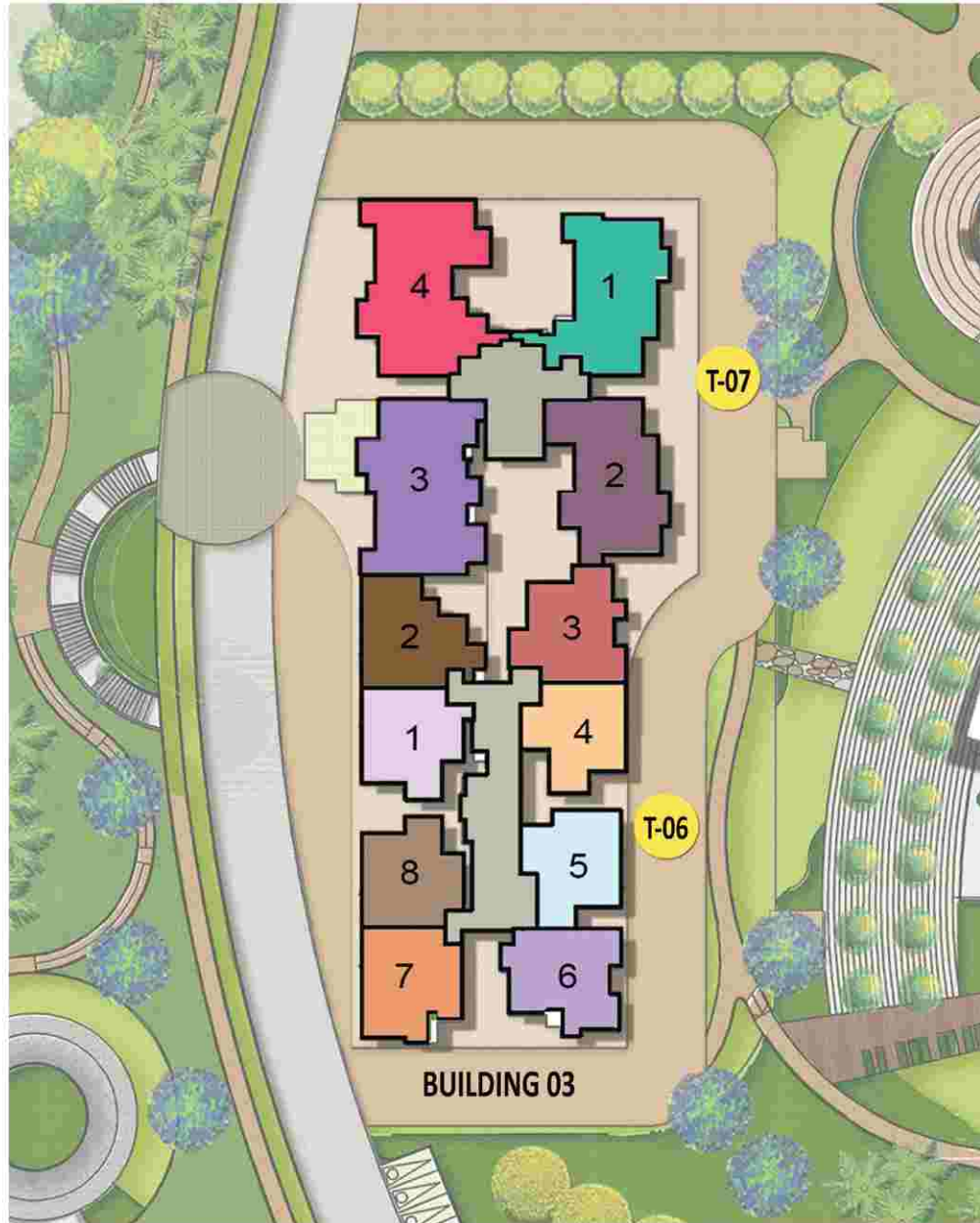


| BUILDING -02 TOWER 4 | | | | |
|----------------------|------|-------------|---------------------------------|------|
| COLOURE | Type | No Of Units | SUPER BUILT UP AREA (SMT) (SFT) | |
| 1 | B10 | 21 | 114 | 1232 |
| 2 | C3 | 21 | 127 | 1368 |
| 3 | C1 | 21 | 126 | 1358 |
| 4 | B12 | 21 | 115 | 1241 |
| 5 | B4 | 21 | 112 | 1211 |
| 6 | C2 | 21 | 127 | 1366 |
| 7 | C7 | 19 | 128 | 1375 |
| 8 | B7 | 21 | 113 | 1221 |

| BUILDING -03 TOWER 5 | | | | |
|----------------------|------|-------------|---------------------------------|------|
| COLOURE | Type | No Of Units | SUPER BUILT UP AREA (SMT) (SFT) | |
| 1 | E5 | 21 | 179 | 1929 |
| 2 | E6 | 19 | 180 | 1933 |
| 3 | F2 | 21 | 229 | 2467 |
| 4 | F1 | 21 | 229 | 2462 |



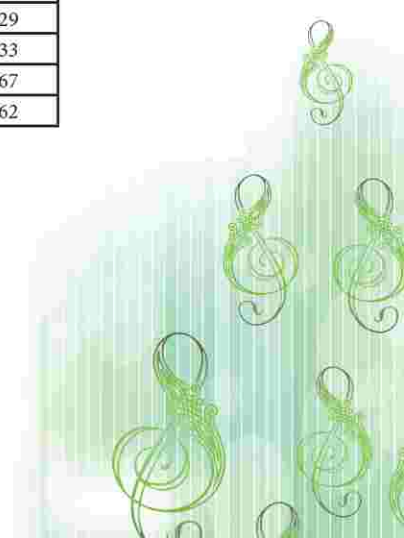


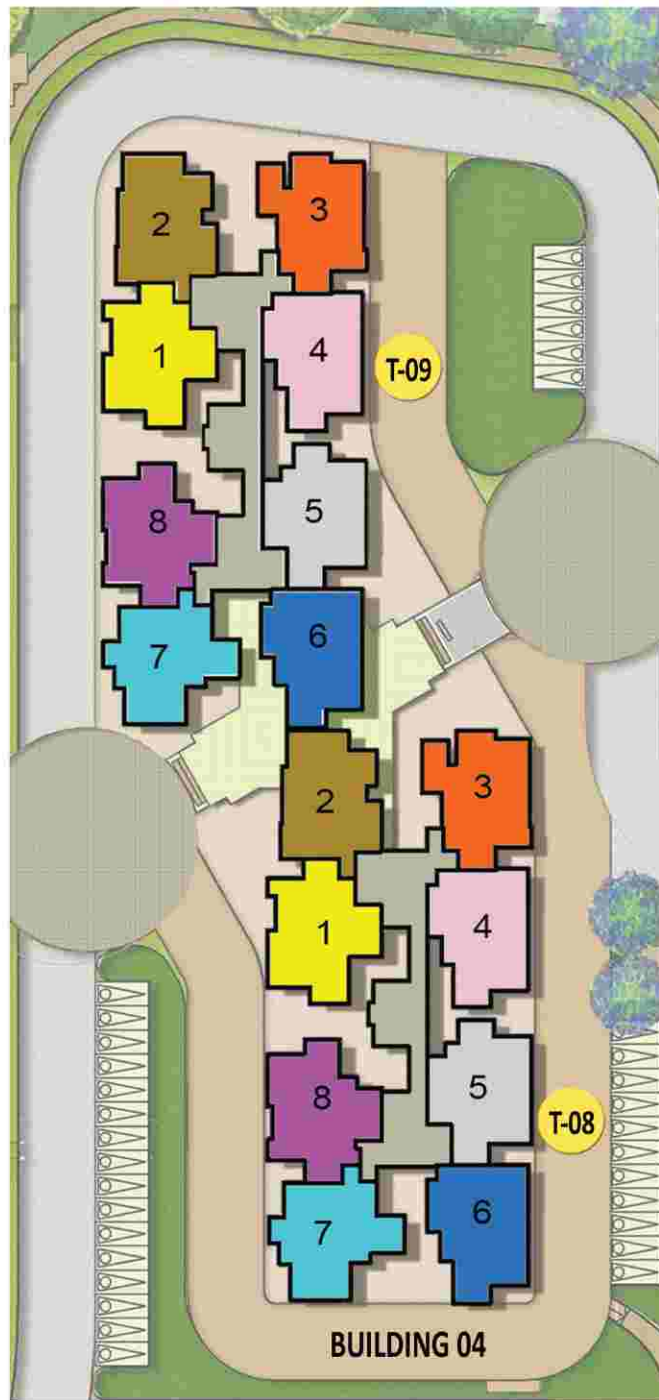


N
↑
KEY PLAN

| BUILDING -02 TOWER 6 | | | | |
|----------------------|------|-------------|---------------------------------|------|
| COLOURE | Type | No Of Units | SUPER BUILT UP AREA (SMT) (SFT) | |
| 1 | B11 | 21 | 115 | 1235 |
| 2 | C8 | 19 | 128 | 1376 |
| 3 | C4 | 21 | 127 | 1372 |
| 4 | B3 | 21 | 112 | 1210 |
| 5 | B5 | 21 | 113 | 1212 |
| 6 | C5 | 21 | 128 | 1374 |
| 7 | C6 | 21 | 128 | 1374 |
| 8 | B9 | 21 | 114 | 1227 |

| BUILDING -03 TOWER 5 | | | | |
|----------------------|------|-------------|---------------------------------|------|
| COLOURE | Type | No Of Units | SUPER BUILT UP AREA (SMT) (SFT) | |
| 1 | E5 | 21 | 179 | 1929 |
| 2 | E6 | 19 | 180 | 1933 |
| 3 | F2 | 21 | 229 | 2467 |
| 4 | F1 | 21 | 229 | 2462 |



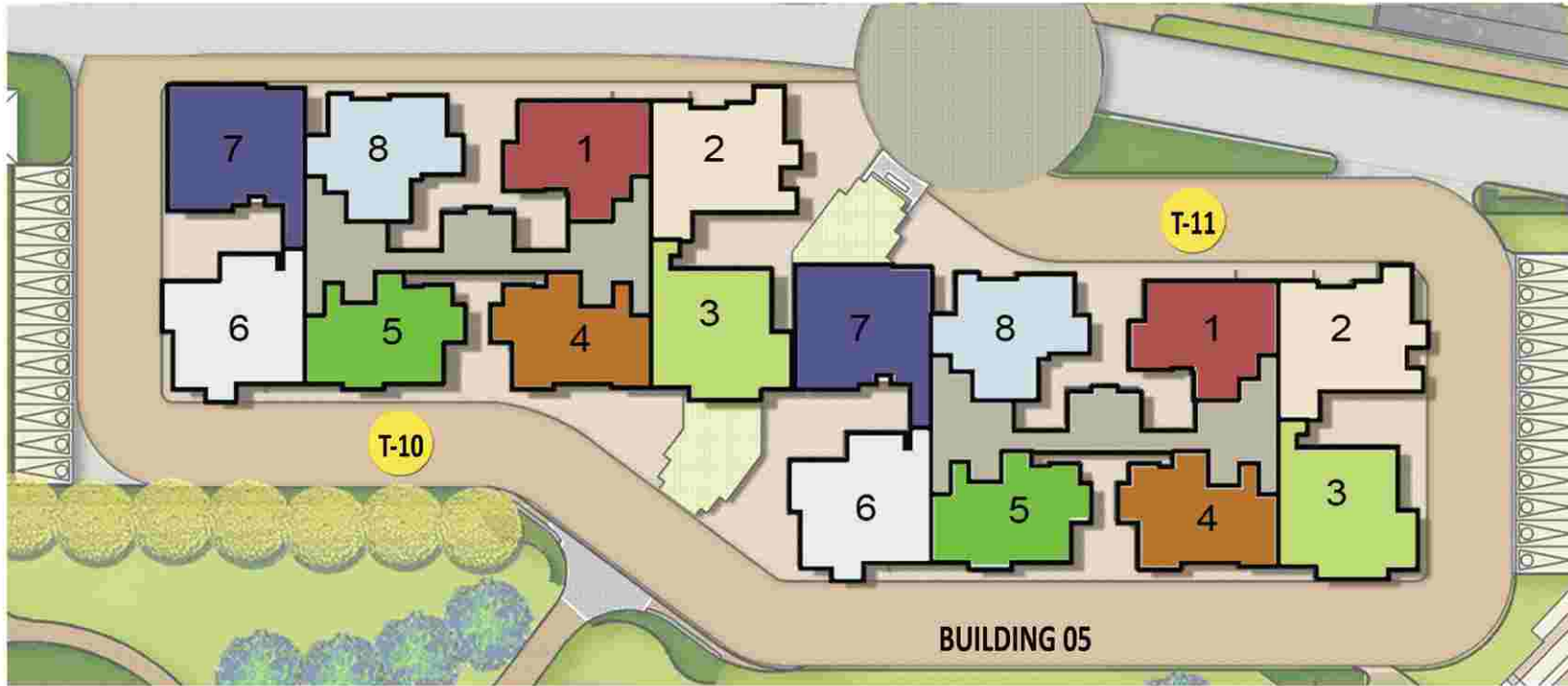


KEY PLAN

| BUILDING -04 TOWER 8 | | | | |
|----------------------|------|-------------|---------------------------------|------|
| COLOURE | Type | No Of Units | SUPER BUILT UP AREA (SMT) (SFT) | |
| 1 | D4 | 16 | 149 | 1600 |
| 2 | D10 | 14 | 151 | 1624 |
| 3 | D6 | 16 | 150 | 1614 |
| 4 | D5 | 16 | 150 | 1613 |
| 5 | D1 | 16 | 147 | 1583 |
| 6 | D9 | 16 | 151 | 1622 |
| 7 | D3 | 16 | 148 | 1591 |
| 8 | D8 | 16 | 150 | 1618 |

| BUILDING -04 TOWER 9 | | | | |
|----------------------|------|-------------|---------------------------------|------|
| COLOURE | Type | No Of Units | SUPER BUILT UP AREA (SMT) (SFT) | |
| 1 | D4 | 16 | 149 | 1600 |
| 2 | D10 | 16 | 151 | 1624 |
| 3 | D6 | 16 | 150 | 1614 |
| 4 | D5 | 16 | 150 | 1613 |
| 5 | D1 | 16 | 147 | 1583 |
| 6 | D9 | 14 | 151 | 1622 |
| 7 | D3 | 16 | 148 | 1591 |
| 8 | D8 | 16 | 150 | 1618 |



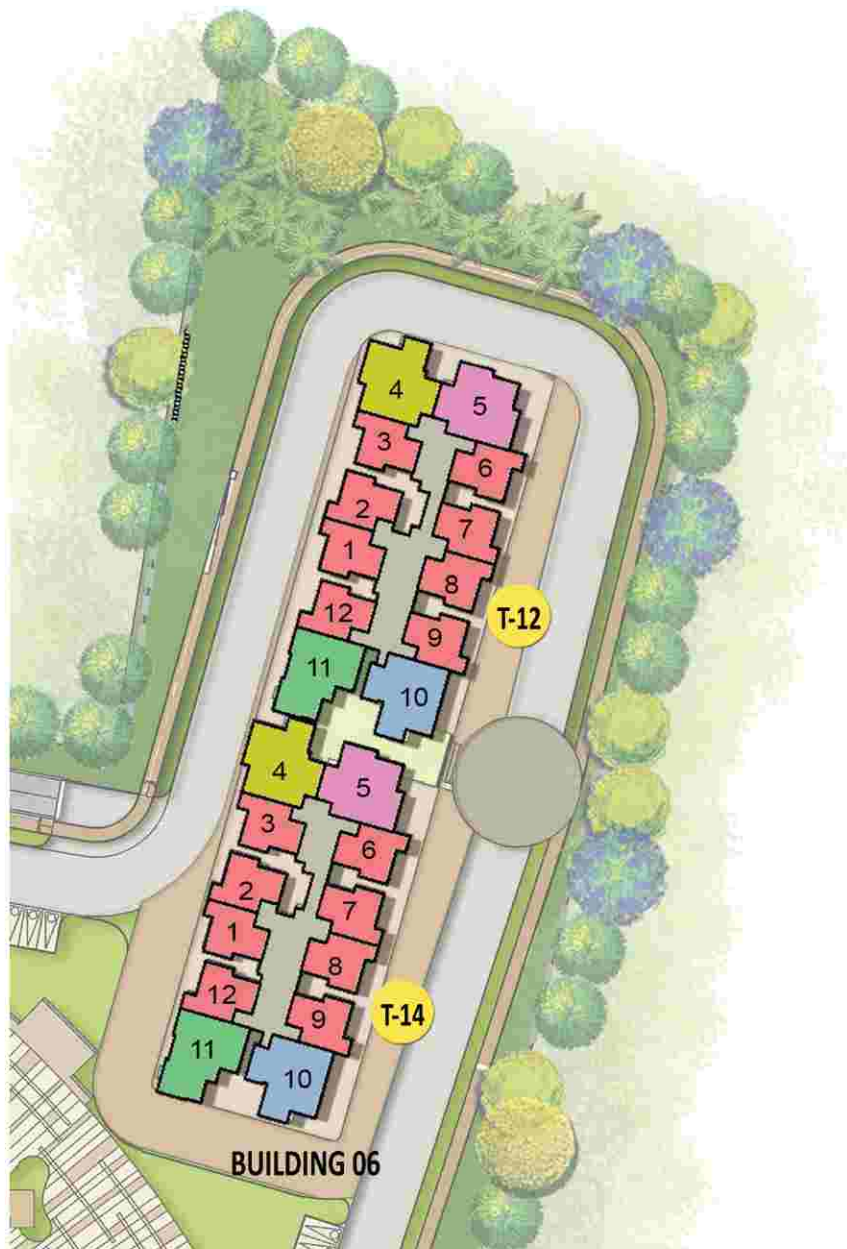


N
KEY PLAN

| BUILDING -05 TOWER 10 | | | | |
|-----------------------|------|-------------|---------------------------|-------|
| COLOURE | Type | No Of Units | SUPER BUILT UP AREA (SMT) | (SFT) |
| 1 | D2 | 16 | 148 | 1588 |
| 2 | E1 | 16 | 177 | 1902 |
| 3 | E3 | 14 | 179 | 1922 |
| 4 | D12 | 16 | 152 | 1634 |
| 5 | D11 | 16 | 152 | 1631 |
| 6 | E2 | 16 | 177 | 1907 |
| 7 | E4 | 16 | 179 | 1927 |
| 8 | D7 | 16 | 150 | 1614 |

| BUILDING -05 TOWER 11 | | | | |
|-----------------------|------|-------------|---------------------------|-------|
| COLOURE | Type | No Of Units | SUPER BUILT UP AREA (SMT) | (SFT) |
| 1 | D2 | 16 | 148 | 1588 |
| 2 | E1 | 16 | 177 | 1902 |
| 3 | E3 | 16 | 179 | 1922 |
| 4 | D12 | 16 | 152 | 1634 |
| 5 | D11 | 16 | 152 | 1631 |
| 6 | E2 | 16 | 177 | 1907 |
| 7 | E4 | 14 | 179 | 1927 |
| 8 | D7 | 16 | 150 | 1614 |



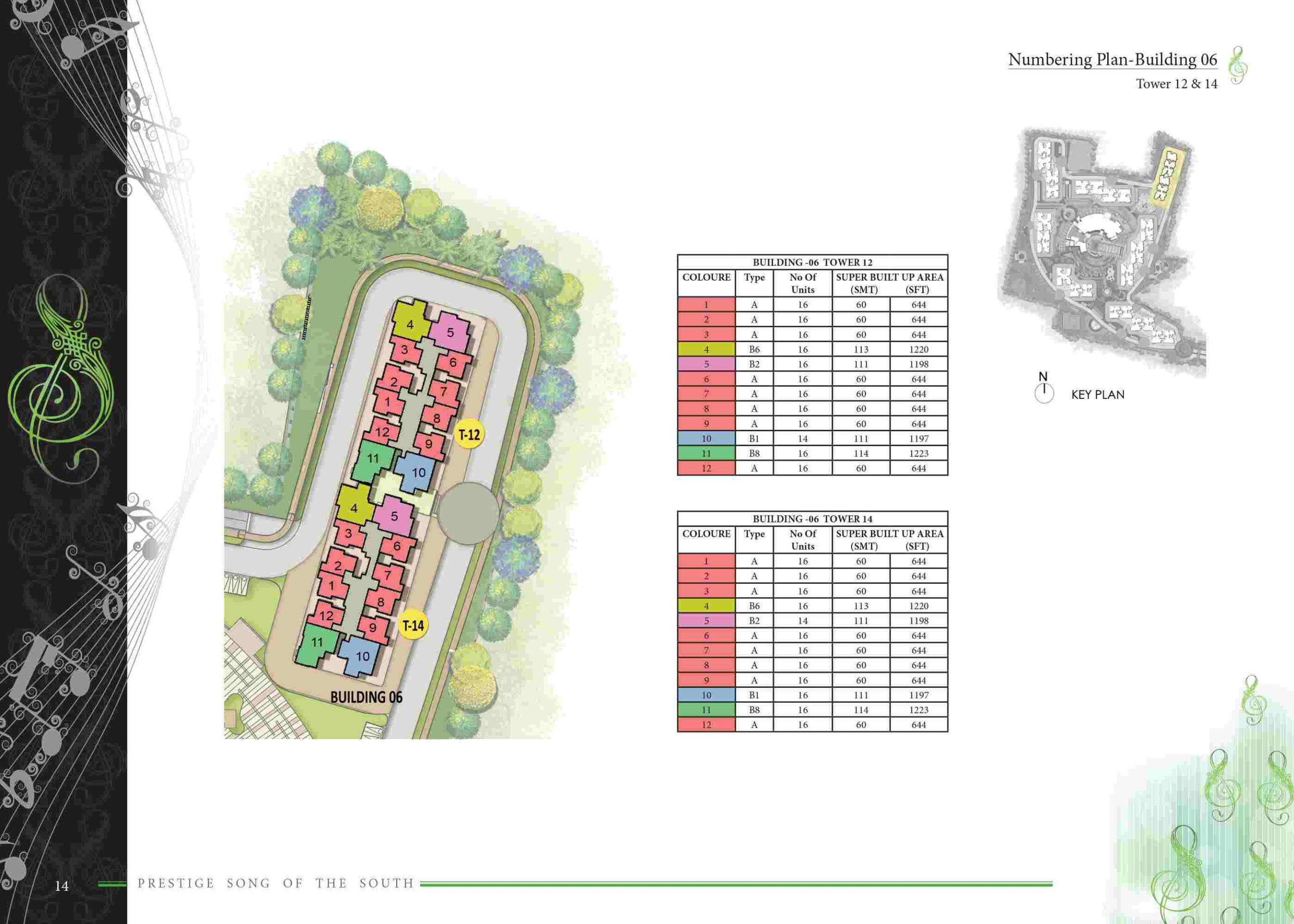


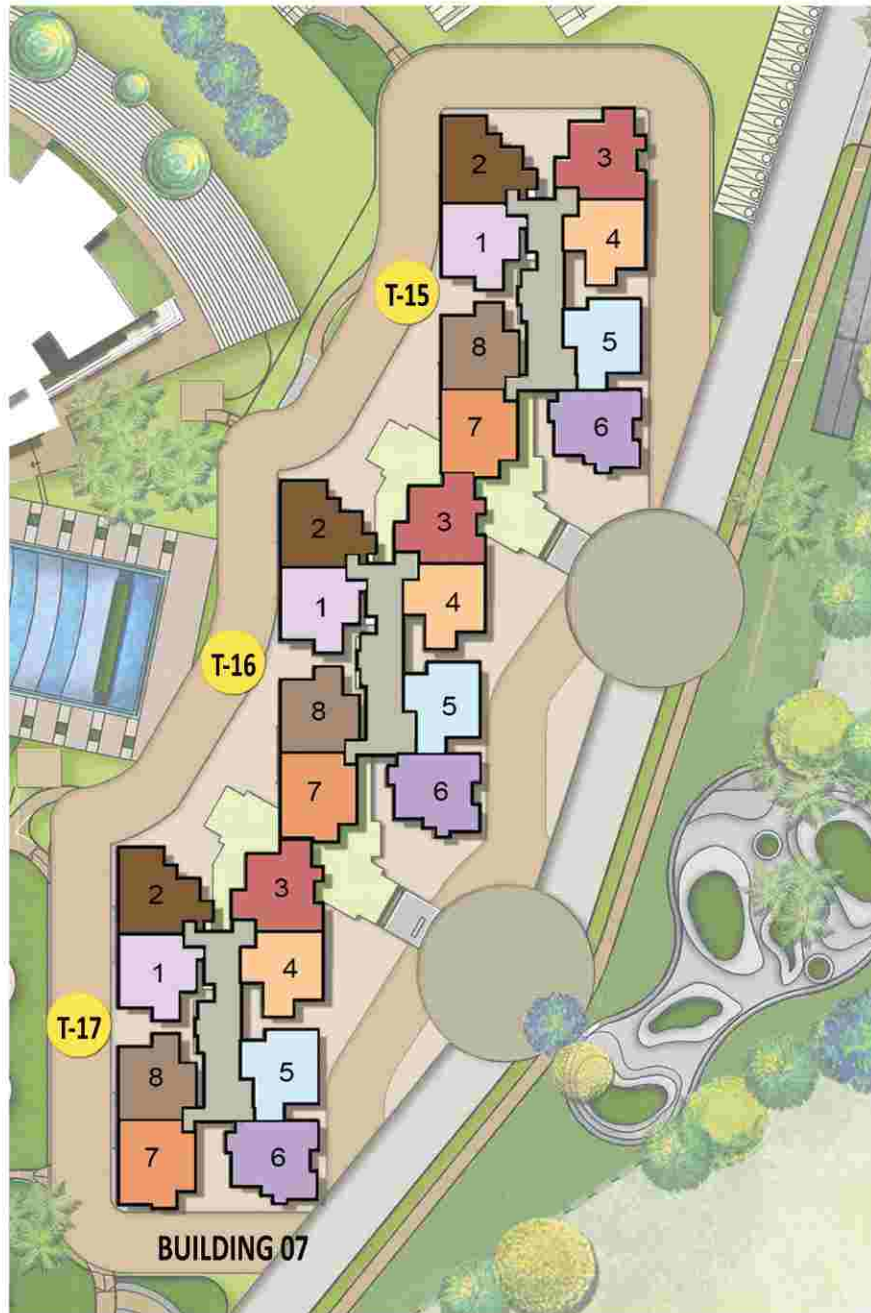
| BUILDING -06 TOWER 12 | | | | |
|-----------------------|------|-------------|---------------------------------|------|
| COLOURE | Type | No Of Units | SUPER BUILT UP AREA (SMT) (SFT) | |
| 1 | A | 16 | 60 | 644 |
| 2 | A | 16 | 60 | 644 |
| 3 | A | 16 | 60 | 644 |
| 4 | B6 | 16 | 113 | 1220 |
| 5 | B2 | 16 | 111 | 1198 |
| 6 | A | 16 | 60 | 644 |
| 7 | A | 16 | 60 | 644 |
| 8 | A | 16 | 60 | 644 |
| 9 | A | 16 | 60 | 644 |
| 10 | B1 | 14 | 111 | 1197 |
| 11 | B8 | 16 | 114 | 1223 |
| 12 | A | 16 | 60 | 644 |

| BUILDING -06 TOWER 14 | | | | |
|-----------------------|------|-------------|---------------------------------|------|
| COLOURE | Type | No Of Units | SUPER BUILT UP AREA (SMT) (SFT) | |
| 1 | A | 16 | 60 | 644 |
| 2 | A | 16 | 60 | 644 |
| 3 | A | 16 | 60 | 644 |
| 4 | B6 | 16 | 113 | 1220 |
| 5 | B2 | 14 | 111 | 1198 |
| 6 | A | 16 | 60 | 644 |
| 7 | A | 16 | 60 | 644 |
| 8 | A | 16 | 60 | 644 |
| 9 | A | 16 | 60 | 644 |
| 10 | B1 | 16 | 111 | 1197 |
| 11 | B8 | 16 | 114 | 1223 |
| 12 | A | 16 | 60 | 644 |



N
KEY PLAN





| BUILDING -07 TOWER 15 | | | | |
|-----------------------|------|-------------|---------------------------------|------|
| COLOURE | Type | No Of Units | SUPER BUILT UP AREA (SMT) (SFT) | |
| 1 | B11 | 18 | 115 | 1235 |
| 2 | C8 | 18 | 128 | 1376 |
| 3 | C4 | 18 | 127 | 1372 |
| 4 | B3 | 18 | 112 | 1210 |
| 5 | B5 | 18 | 113 | 1212 |
| 6 | C5 | 18 | 128 | 1374 |
| 7 | C6 | 16 | 128 | 1374 |
| 8 | B9 | 18 | 114 | 1227 |

| BUILDING -07 TOWER 16 | | | | |
|-----------------------|------|-------------|---------------------------------|------|
| COLOURE | Type | No Of Units | SUPER BUILT UP AREA (SMT) (SFT) | |
| 1 | B11 | 18 | 115 | 1235 |
| 2 | C8 | 18 | 128 | 1376 |
| 3 | C4 | 16 | 127 | 1372 |
| 4 | B3 | 18 | 112 | 1210 |
| 5 | B5 | 18 | 113 | 1212 |
| 6 | C5 | 18 | 128 | 1374 |
| 7 | C6 | 16 | 128 | 1374 |
| 8 | B9 | 18 | 114 | 1227 |

| BUILDING -07 TOWER 17 | | | | |
|-----------------------|------|-------------|---------------------------------|------|
| COLOURE | Type | No Of Units | SUPER BUILT UP AREA (SMT) (SFT) | |
| 1 | B11 | 18 | 115 | 1235 |
| 2 | C8 | 18 | 128 | 1376 |
| 3 | C4 | 16 | 127 | 1372 |
| 4 | B3 | 18 | 112 | 1210 |
| 5 | B5 | 18 | 113 | 1212 |
| 6 | C5 | 18 | 128 | 1374 |
| 7 | C6 | 18 | 128 | 1374 |
| 8 | B9 | 18 | 114 | 1227 |



KEY PLAN



Tower 04 & 05

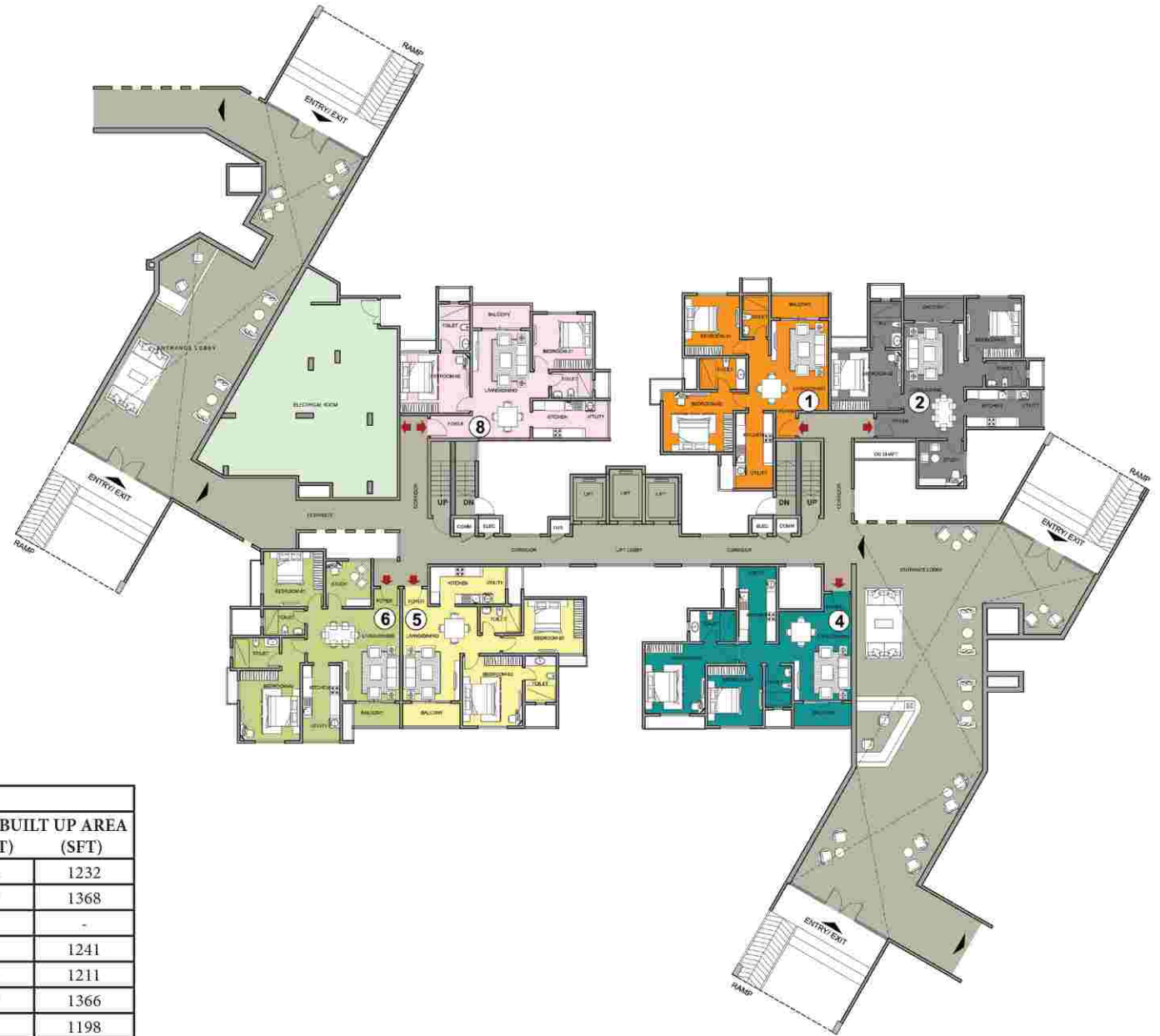


Artist's Impression



| BUILDING-01 TOWER 1 | | | | | |
|---------------------|------|---------|-----------|---------------------------------|------|
| COLOURE | TYPE | UNIT NO | NO OF BED | SUPER BUILT UP AREA (SMT) (SFT) | |
| 1 | B10 | 1 | 2 BED | 114 | 1232 |
| 2 | C3 | 2 | 2.5 BED | 127 | 1368 |
| 3 | C1 | 3 | 2.5 BED | 126 | 1358 |
| 4 | B12 | 4 | 2 BED | 115 | 1241 |
| 5 | B4 | 5 | 2 BED | 112 | 1211 |
| 6 | C2 | 6 | 2.5 BED | 127 | 1366 |
| 7 | ELEC | 7 | - | - | - |
| 8 | B7 | 8 | 2 BED | 113 | 1221 |





| BUILDING -01 TOWER 2 | | | | | |
|----------------------|-------------|---------|-----------|---------------------------|-------|
| COLOURE | TYPE | UNIT NO | NO OF BED | SUPER BUILT UP AREA (SMT) | (SFT) |
| 1 | B10 | 1 | 2 BED | 114 | 1232 |
| 2 | C3 | 2 | 2.5 BED | 127 | 1368 |
| | LOBBY BELOW | - | - | - | - |
| 4 | B12 | 4 | 2 BED | 115 | 1241 |
| 5 | B4 | 5 | 2 BED | 112 | 1211 |
| 6 | C2 | 6 | 2.5 BED | 127 | 1366 |
| 7 | C7a | 7 | 1.5 BED | 111 | 1198 |
| 8 | B7 | 8 | 2 BED | 113 | 1221 |





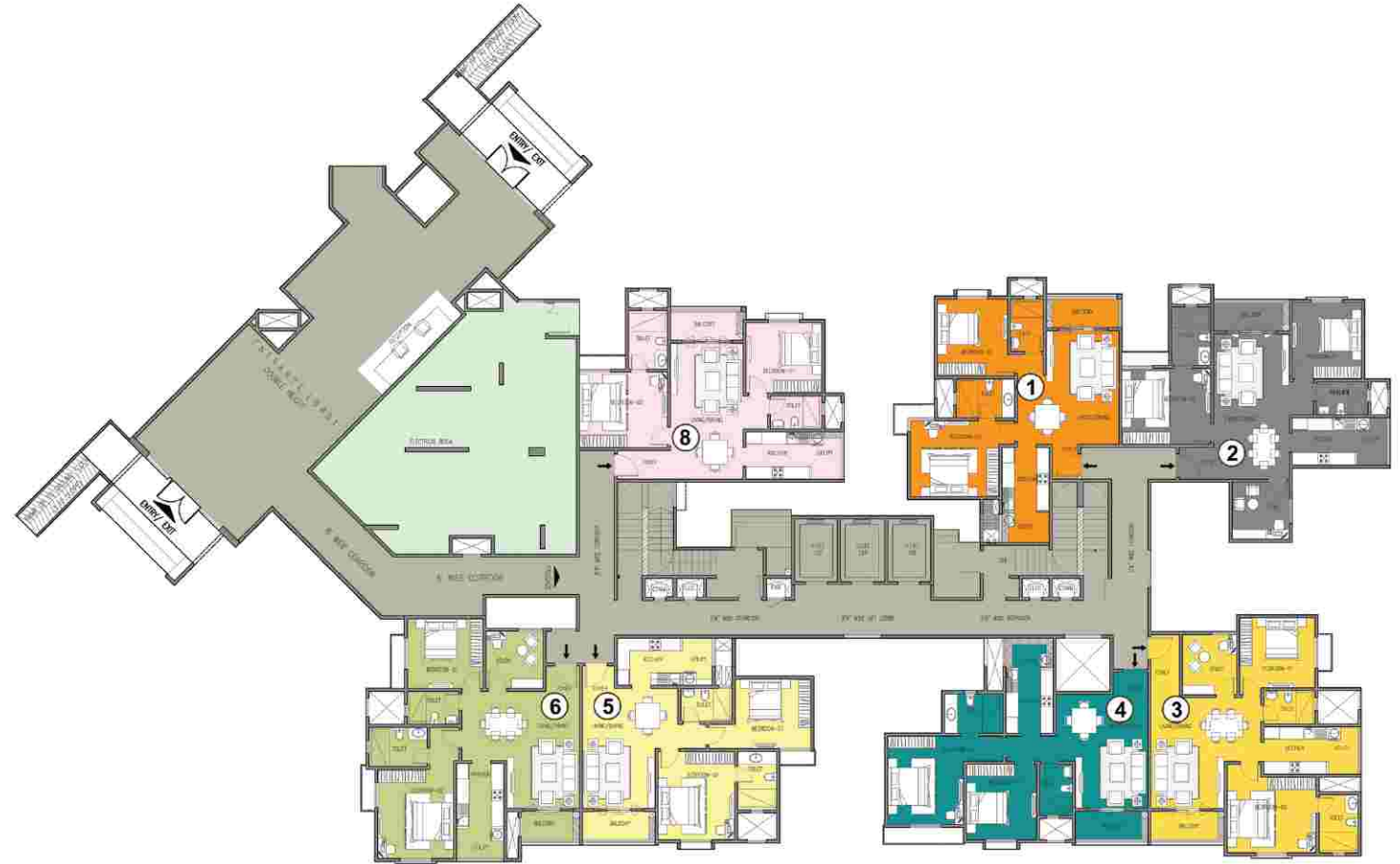
N
 KEY PLAN



| BUILDING -01 TOWER 3 | | | | | | |
|----------------------|--------------|------|---------|-----------|---------------------------|-------|
| SL. NO | COLOURE | TYPE | UNIT NO | NO OF BED | SUPER BUILT UP AREA (SMT) | (SFT) |
| 1 | Orange | B10 | 1 | 2 BED | 114 | 1232 |
| 2 | Grey | C3 | 2 | 2.5 BED | 127 | 1368 |
| 3 | Light Green | ELEC | 3 | - | - | - |
| 4 | Dark Teal | B12 | 4 | 2 BED | 115 | 1241 |
| 5 | Yellow | B4 | 5 | 2 BED | 112 | 1211 |
| 6 | Light Yellow | C2 | 6 | 2.5 BED | 127 | 1366 |
| 7 | Teal | C7 | 7 | 2.5 BED | 123 | 1375 |
| 8 | Pink | B7 | 8 | 2 BED | 113 | 1221 |



N
 KEY PLAN



| BUILDING -02 TOWER 4 | | | | | | |
|----------------------|--------------|------|---------|-----------|---------------------------------|------|
| SL. NO | COLOUR | Type | UNIT NO | NO OF BED | SUPER BUILT UP AREA (SMT) (SFT) | |
| 1 | Orange | B10 | 1 | 2 BED | 114 | 1232 |
| 2 | Grey | C3 | 2 | 2.5 BED | 127 | 1368 |
| 3 | Yellow | C1 | 3 | 2.5 BED | 126 | 1358 |
| 4 | Teal | B12 | 4 | 2 BED | 115 | 1241 |
| 5 | Light Yellow | B4 | 5 | 2 BED | 112 | 1211 |
| 6 | Light Green | C2 | 6 | 2.5 BED | 127 | 1366 |
| 7 | Light Green | ELEC | 7 | - | - | - |
| 8 | Pink | B7 | 8 | 2 BED | 113 | 1221 |



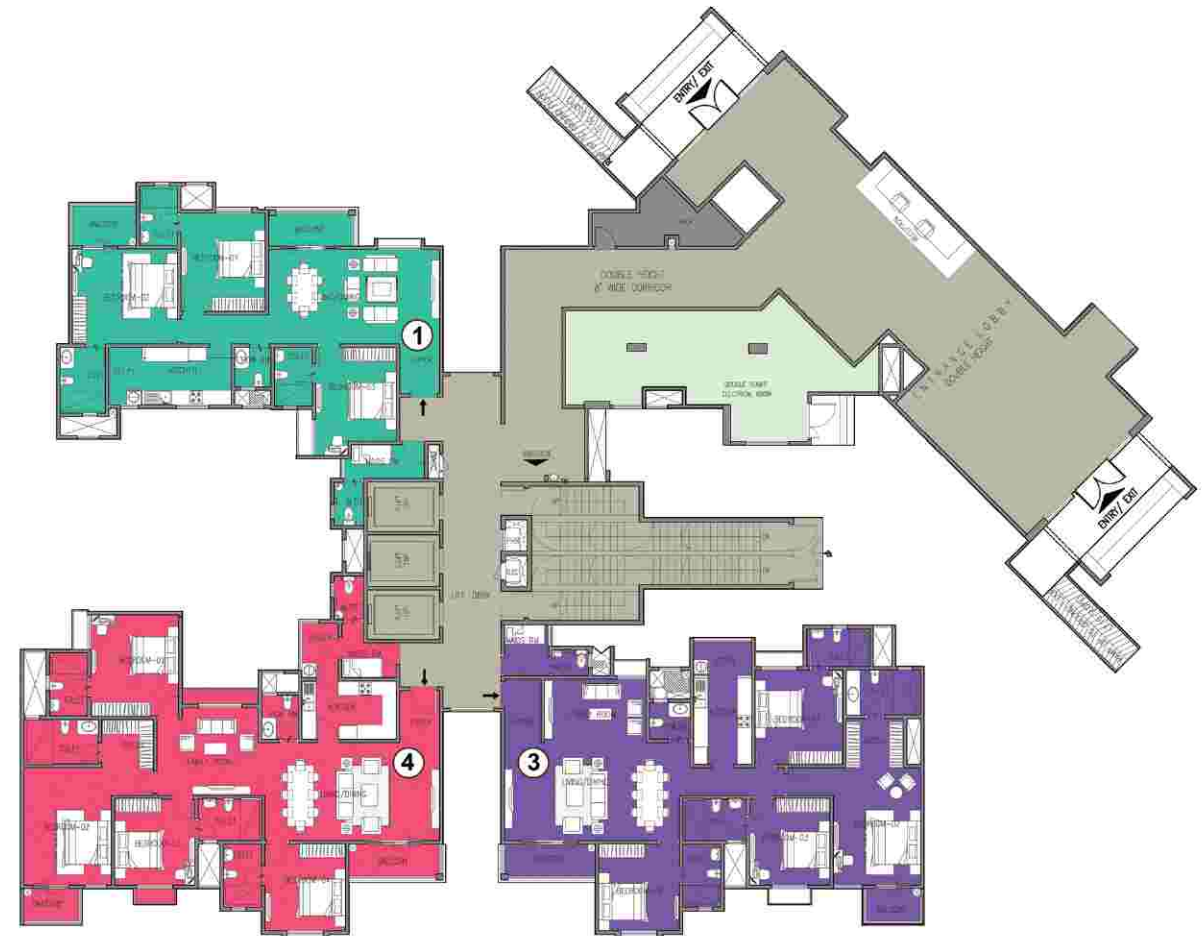
Tower 08 & 09



Artist's Impression

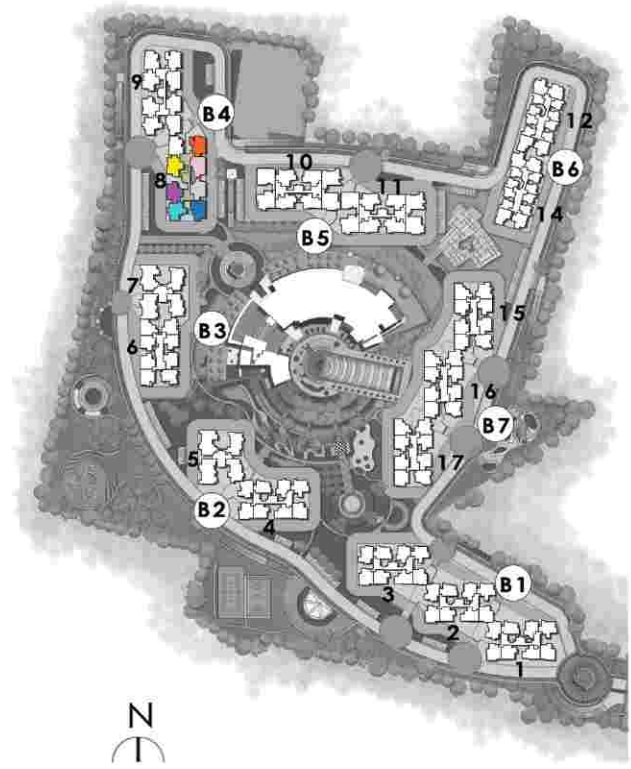


KEY PLAN



| BUILDING -02 TOWER 5 | | | | | | |
|----------------------|--------|--------------|---------|-------------|---------------------|-------|
| SL. NO | COLOUR | TYPE | UNIT NO | NO OF BED | SUPER BUILT UP AREA | |
| | | | | | (SMT) | (SFT) |
| 1 | Green | E5 | 1 | 3 BED LARGE | 179 | 1929 |
| 2 | Grey | LOBBY / ELEC | 2 | - | - | - |
| 3 | Purple | F2 | 3 | 4 BED | 229 | 2467 |
| 4 | Red | F1 | 4 | 4 BED | 229 | 2462 |





| BUILDING -04 TOWER 8 | | | | | | |
|----------------------|-------------|------|---------|-------------|------------------------------------|------|
| SL. NO | COLOURE | TYPE | UNIT NO | NO OF BED | SUPER BUILT UP AREA (SMT) (SFT) | |
| 1 | Yellow | D4 | 1 | 3 BED SMALL | 149 | 1600 |
| 2 | Light Green | ELEC | 2 | - | - | - |
| 3 | Orange | D6 | 3 | 3 BED SMALL | 150 | 1614 |
| 4 | Pink | D5 | 4 | 3 BED SMALL | 150 | 1613 |
| 5 | Grey | D1 | 5 | 3 BED SMALL | 147 | 1583 |
| 6 | Blue | D9 | 6 | 3 BED SMALL | 151 | 1622 |
| 7 | Cyan | D3 | 7 | 3 BED SMALL | 148 | 1591 |
| 8 | Purple | D8 | 8 | 3 BED SMALL | 150 | 1618 |





| BUILDING -04 TOWER 9 | | | | | | |
|----------------------|---------|------|---------|-------------|------------------------------------|------|
| SL. NO | COLOURE | TYPE | UNIT NO | NO OF BED | SUPER BUILT UP AREA (SMT) (SFT) | |
| 1 | Yellow | D4 | 1 | 3 BED SMALL | 149 | 1600 |
| 2 | Brown | D10 | 2 | 3 BED SMALL | 151 | 1624 |
| 3 | Orange | D6 | 3 | 3 BED SMALL | 150 | 1614 |
| 4 | Pink | D5 | 4 | 3 BED SMALL | 150 | 1613 |
| 5 | Grey | D1 | 5 | 3 BED SMALL | 147 | 1583 |
| 6 | Green | ELEC | 6 | - | - | - |
| 7 | Blue | D3 | 7 | 3 BED SMALL | 148 | 1591 |
| 8 | Purple | D8 | 8 | 3 BED SMALL | 150 | 1618 |

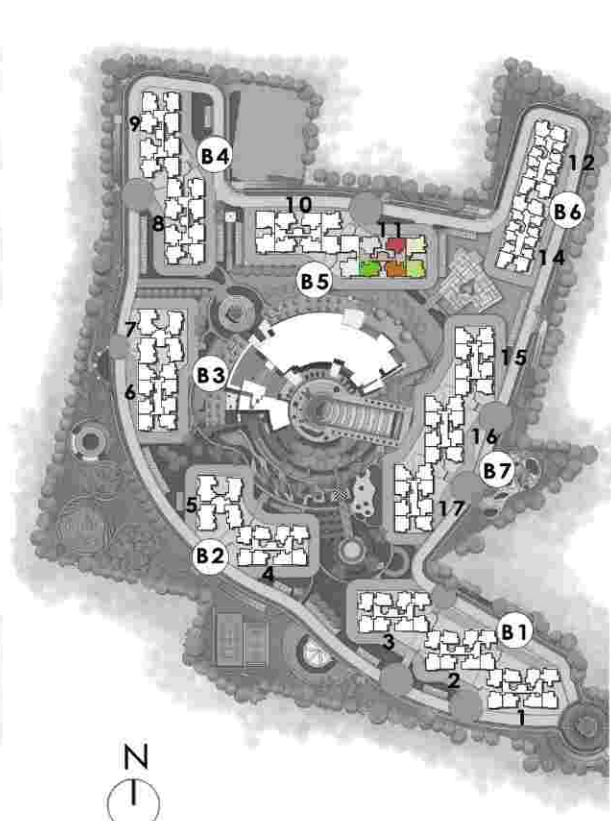


Artist's Impression



| BUILDING -05 TOWER 10 | | | | | | |
|-----------------------|-------------|------|---------|-------------|---------------------------|-------|
| SL.NO | COLOURE | Type | UNIT NO | NO OF BED | SUPER BUILT UP AREA (SMT) | (SFT) |
| 1 | Red | D2 | 1 | 3 BED SMALL | 148 | 1588 |
| 2 | Orange | E1 | 2 | 3 BED SMALL | 177 | 1902 |
| 3 | Light Green | ELEC | 3 | - | - | - |
| 4 | Brown | D12 | 4 | 3 BED SMALL | 152 | 1634 |
| 5 | Green | D11 | 5 | 3 BED SMALL | 152 | 1631 |
| 6 | Light Blue | E2 | 6 | 3 BED SMALL | 177 | 1907 |
| 7 | Dark Blue | E4 | 7 | 3 BED SMALL | 179 | 1927 |
| 8 | Light Blue | D7 | 8 | 3 BED SMALL | 150 | 1614 |

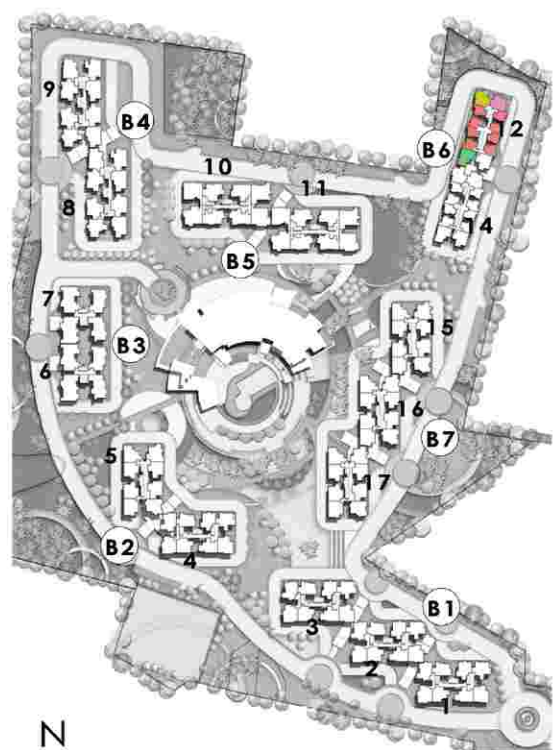




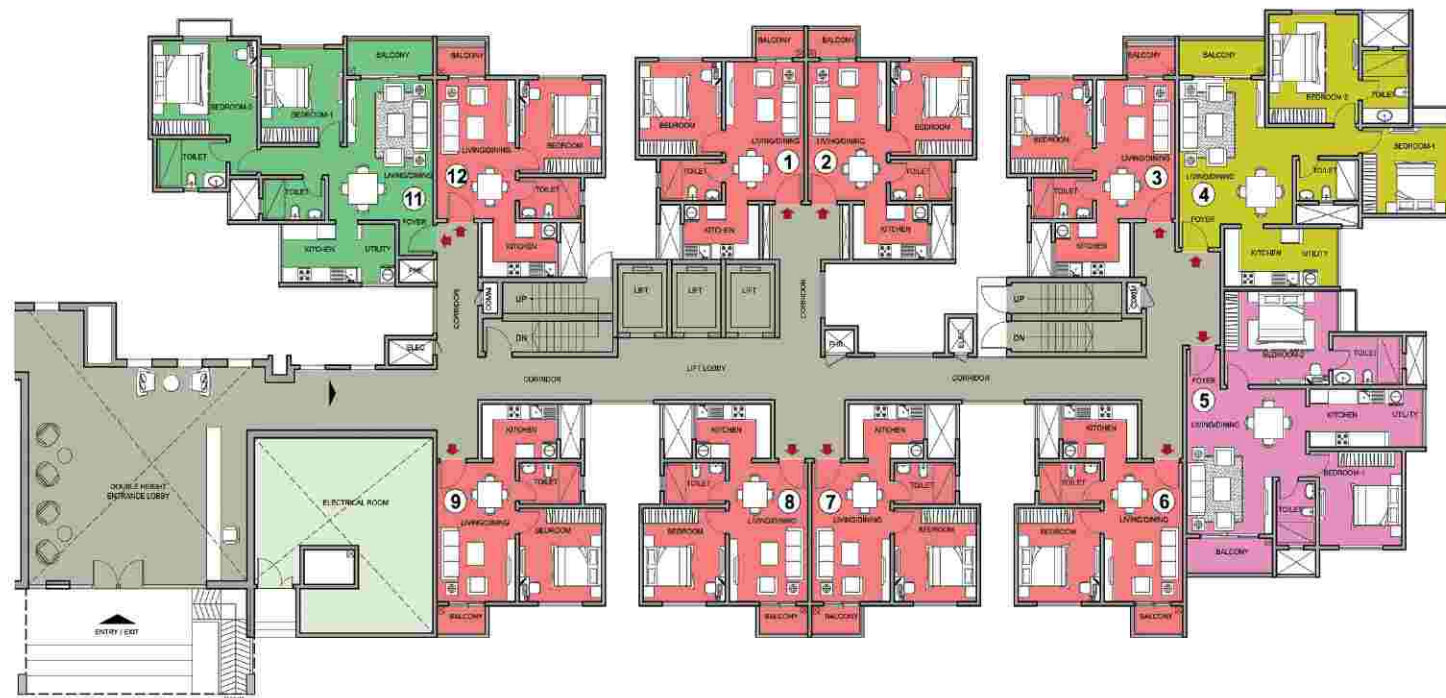
N
 KEY PLAN



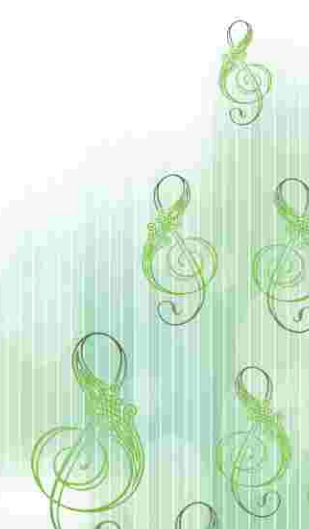
| BUILDING -05 TOWER 11 | | | | | | |
|-----------------------|-------------|------|---------|-------------|---------------------|-------|
| SL.NO | COLOURE | Type | UNIT NO | NO OF BED | SUPER BUILT UP AREA | |
| | | | | | (SMT) | (SFT) |
| 1 | Red | D2 | 1 | 3 BED SMALL | 148 | 1588 |
| 2 | Orange | E1 | 2 | 3 BED LARGE | 177 | 1902 |
| 3 | Green | E3 | 3 | 3 BED LARGE | 179 | 1922 |
| 4 | Brown | D12 | 4 | 3 BED SMALL | 152 | 1634 |
| 5 | Light Green | D11 | 5 | 3 BED SMALL | 152 | 1631 |
| 6 | Light Blue | E2 | 6 | 3 BED LARGE | 177 | 1907 |
| 7 | Light Green | ELEC | 7 | - | - | - |
| 8 | Light Blue | D7 | 8 | 3 BED SMALL | 150 | 1614 |



N
KEY PLAN

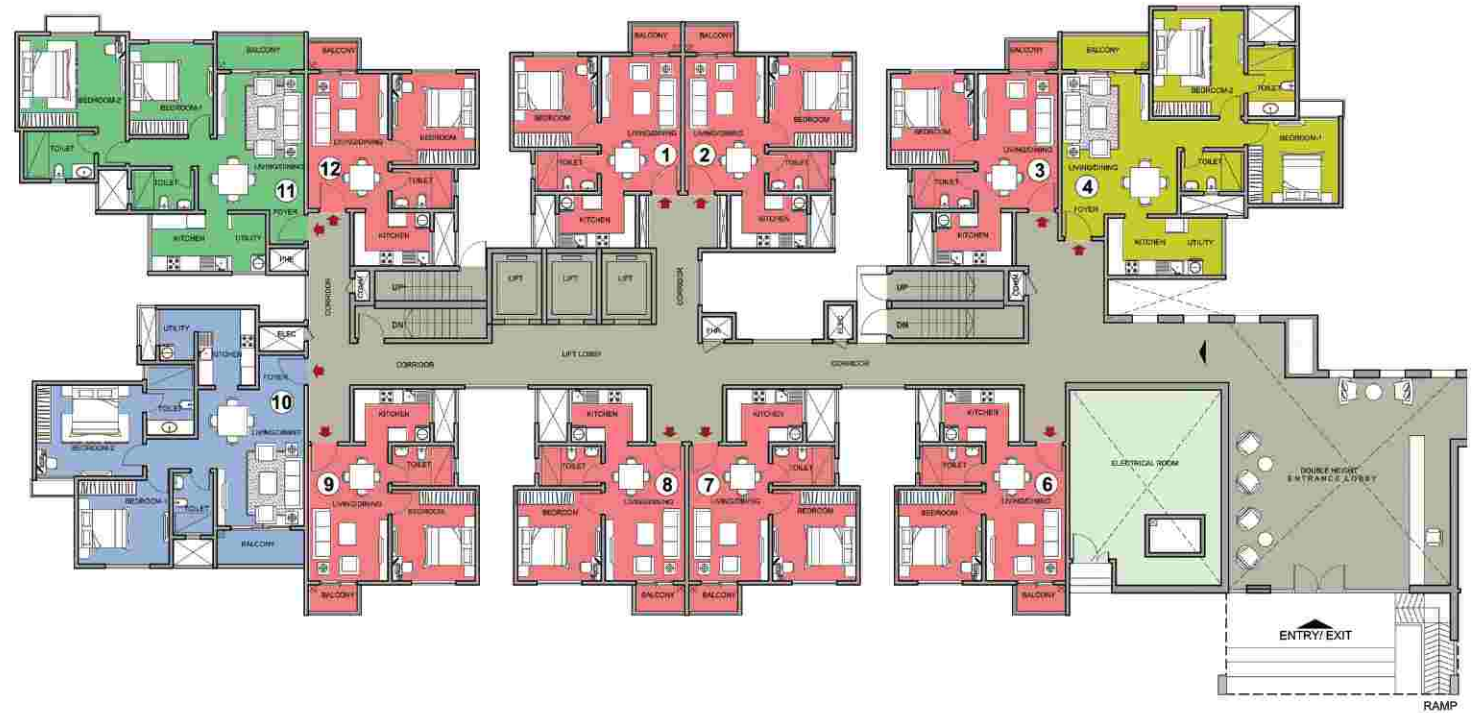


| BUILDING -06 TOWER 12 | | | | | | |
|-----------------------|-------------|------|---------|-----------|------------------------------------|------|
| SL. NO | COLOURE | TYPE | UNIT NO | NO OF BED | SUPER BUILT UP AREA (SMT) (SFT) | |
| 1 | Red | A | 1 | 1 BED | 60 | 644 |
| 2 | Red | A | 2 | 1 BED | 60 | 644 |
| 3 | Red | A | 3 | 1 BED | 60 | 644 |
| 4 | Yellow | B6 | 4 | 2 BED | 113 | 1220 |
| 5 | Pink | B2 | 5 | 1 BED | 111 | 1198 |
| 6 | Red | A | 6 | 1 BED | 60 | 644 |
| 7 | Red | A | 7 | 1 BED | 60 | 644 |
| 8 | Red | A | 8 | 1 BED | 60 | 644 |
| 9 | Red | A | 9 | 1 BED | 60 | 644 |
| 10 | Green | ELEC | 10 | - | - | - |
| 11 | Light Green | B8 | 11 | 2 BED | 114 | 1223 |
| 12 | Red | A | 12 | 1 BED | 60 | 644 |





N
KEY PLAN



| BUILDING -06 TOWER 12 | | | | | | |
|-----------------------|-------------|------|---------|-----------|------------------------------------|------|
| SL. NO | COLOURE | TYPE | UNIT NO | NO OF BED | SUPER BUILT UP AREA (SMT) (SFT) | |
| 1 | Red | A | 1 | 1 BED | 60 | 644 |
| 2 | Red | A | 2 | 1 BED | 60 | 644 |
| 3 | Red | A | 3 | 1 BED | 60 | 644 |
| 4 | Yellow | B6 | 4 | 2 BED | 113 | 1220 |
| 5 | Light Green | ELEC | 5 | - | - | - |
| 6 | Red | A | 6 | 1 BED | 60 | 644 |
| 7 | Red | A | 7 | 1 BED | 60 | 644 |
| 8 | Red | A | 8 | 1 BED | 60 | 644 |
| 9 | Red | A | 9 | 1 BED | 60 | 644 |
| 10 | Blue | B1 | 10 | 2 BED | 111 | 1197 |
| 11 | Green | B8 | 11 | 2 BED | 114 | 1223 |
| 12 | Red | A | 12 | 1 BED | 60 | 644 |







| BUILDING -07 TOWER 15 | | | | | | |
|-----------------------|--------|------|---------|-----------|---------------------|-------|
| SL.NO | COLOUR | TYPE | UNIT NO | NO OF BED | SUPER BUILT UP AREA | |
| | | | | | (SMT) | (SFT) |
| 1 | | B11 | 1 | 2 BED | 115 | 1235 |
| 2 | | C8 | 2 | 2.5 BED | 128 | 1376 |
| 3 | | C4 | 3 | 2.5 BED | 127 | 1372 |
| 4 | | B3 | 4 | 2 BED | 112 | 1210 |
| 5 | | B5 | 5 | 2 BED | 113 | 1212 |
| 6 | | C5 | 6 | 2.5 BED | 128 | 1374 |
| 7 | | ELEC | 7 | - | - | - |
| 8 | | B9 | 8 | 2.5 BED | 114 | 1227 |





KEY PLAN



| BUILDING -07 TOWER 16 | | | | | | |
|-----------------------|--------|-----------|---------|-----------|------------------------------------|------|
| SL.NO | COLOUR | TYPE | UNIT NO | NO OF BED | SUPER BUILT UP AREA (SMT) (SFT) | |
| 1 | | B11 | 1 | 2 BED | 115 | 1235 |
| 2 | | C8 | 2 | 2.5 BED | 128 | 1376 |
| 3 | | LANDSCAPE | 3 | - | - | - |
| 4 | | B3 | 4 | 2 BED | 112 | 1210 |
| 5 | | B5 | 5 | 2 BED | 113 | 1212 |
| 6 | | C5 | 6 | 2.5 BED | 128 | 1374 |
| 7 | | ELEC | 7 | - | - | - |
| 8 | | B9 | 8 | 2.5 BED | 114 | 1227 |



KEY PLAN



| BUILDING -07 TOWER 17 | | | | | | |
|-----------------------|--------|------|---------|-----------|---------------------------|-------|
| SL.NO | COLOUR | TYPE | UNIT NO | NO OF BED | SUPER BUILT UP AREA (SMT) | (SFT) |
| 1 | | B11 | 1 | 2 BED | 115 | 1235 |
| 2 | | C8 | 2 | 2.5 BED | 128 | 1376 |
| 3 | | ELEC | 3 | - | - | - |
| 4 | | B3 | 4 | 2 BED | 112 | 1210 |
| 5 | | B5 | 5 | 2 BED | 113 | 1212 |
| 6 | | C5 | 6 | 2.5 BED | 128 | 1374 |
| 7 | | C6 | 7 | 2.5 BED | 128 | 1374 |
| 8 | | B9 | 8 | 2.5 BED | 114 | 1227 |



Artist's Impression



N
 KEY PLAN



| BUILDING -01 TOWER 1 | | | | | |
|----------------------|------|---------|-----------|---------------------------|-------|
| COLOURE | TYPE | UNIT NO | NO OF BED | SUPER BUILT UP AREA (SMT) | (SFT) |
| 1 | B10 | 1 | 2 BED | 114 | 1232 |
| 2 | C3 | 2 | 2.5 BED | 127 | 1368 |
| 3 | C1 | 3 | 2.5 BED | 126 | 1358 |
| 4 | B12 | 4 | 2 BED | 115 | 1241 |
| 5 | B4 | 5 | 2 BED | 112 | 1211 |
| 6 | C2 | 6 | 2.5 BED | 127 | 1366 |
| 7 | C7a | 7 | 1.5 BED | 111 | 1198 |
| 8 | B7 | 8 | 2 BED | 113 | 1221 |





KEY PLAN



| BUILDING -01 TOWER 2 | | | | | |
|----------------------|-------------|---------|-----------|---------------------|-------|
| COLOURE | TYPE | UNIT NO | NO OF BED | SUPER BUILT UP AREA | |
| | | | | (SMT) | (SFT) |
| 1 | B10 | 1 | 2 BED | 114 | 1232 |
| 2 | C3 | 2 | 2.5 BED | 127 | 1368 |
| | LOBBY BELOW | - | - | - | - |
| 4 | B12 | 4 | 2 BED | 115 | 1241 |
| 5 | B4 | 5 | 2 BED | 112 | 1211 |
| 6 | C2 | 6 | 2.5 BED | 127 | 1366 |
| 7 | C7a | 7 | 1.5 BED | 111 | 1198 |
| 8 | B7 | 8 | 2 BED | 113 | 1221 |



| BUILDING -01 TOWER 3 | | | | | | |
|----------------------|-------------|------------|---------|-----------|---------------------------------|------|
| SL. NO | COLOURE | TYPE | UNIT NO | NO OF BED | SUPER BUILT UP AREA (SMT) (SFT) | |
| 1 | Orange | B10 | 1 | 2 BED | 114 | 1232 |
| 2 | Grey | C3 | 2 | 2.5 BED | 127 | 1368 |
| 3 | | ELEC BELOW | - | - | - | - |
| 4 | Teal | B12 | 4 | 2 BED | 115 | 1241 |
| 5 | Yellow | B4 | 5 | 2 BED | 112 | 1211 |
| 6 | Light Green | C2 | 6 | 2.5 BED | 127 | 1366 |
| 7 | Light Blue | C7 | 7 | 2.5 BED | 123 | 1375 |
| 8 | Pink | B7 | 8 | 2 BED | 113 | 1221 |





KEY PLAN



| BUILDING -02 TOWER 4 | | | | | | |
|----------------------|--------------|------|---------|-----------|---------------------------------|------|
| SL. NO | COLOUR | Type | UNIT NO | NO OF BED | SUPER BUILT UP AREA (SMT) (SFT) | |
| 1 | Orange | B10 | 1 | 2 BED | 114 | 1232 |
| 2 | Grey | C3 | 2 | 2.5 BED | 127 | 1368 |
| 3 | Yellow | C1 | 3 | 2.5 BED | 126 | 1358 |
| 4 | Teal | B12 | 4 | 2 BED | 115 | 1241 |
| 5 | Light Yellow | B4 | 5 | 2 BED | 112 | 1211 |
| 6 | Light Green | C2 | 6 | 2.5 BED | 127 | 1366 |
| 7 | Light Blue | C7a | 7 | 1.5 BED | 111 | 1198 |
| 8 | Pink | B7 | 8 | 2 BED | 113 | 1221 |

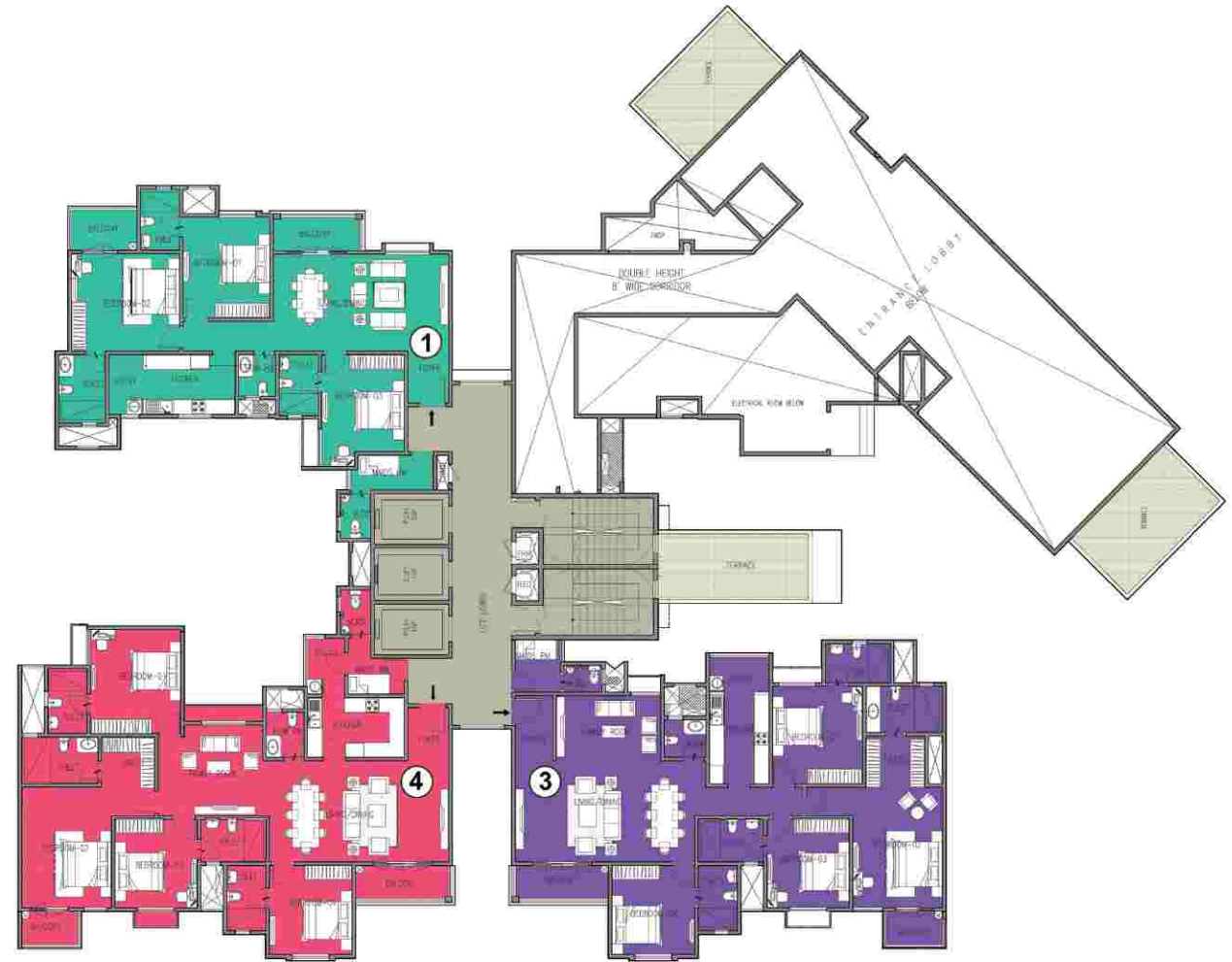
Tower 06 & 07



Artist's Impression



N
 KEY PLAN



| BUILDING -02 TOWER 5 | | | | | | |
|----------------------|--------|--------------------|---------|-------------|------------------------------------|------|
| SL. NO | COLOUR | TYPE | UNIT NO | NO OF BED | SUPER BUILT UP AREA (SMT) (SFT) | |
| 1 | Green | E5 | 1 | 3 BED LARGE | 179 | 1929 |
| 2 | Tan | LOBBY / ELEC BELOW | 2 | - | - | - |
| 3 | Purple | F2 | 3 | 4 BED | 229 | 2467 |
| 4 | Red | F1 | 4 | 4 BED | 229 | 2462 |





N
KEY PLAN





KEY PLAN



| BUILDING -04 TOWER 9 | | | | | | |
|----------------------|---------|------------|---------|-------------|------------------------------------|------|
| SL. NO | COLOURE | TYPE | UNIT NO | NO OF BED | SUPER BUILT UP AREA (SMT) (SFT) | |
| 1 | Yellow | D4 | 1 | 3 BED SMALL | 149 | 1600 |
| 2 | Brown | D10 | 2 | 3 BED SMALL | 151 | 1624 |
| 3 | Orange | D6 | 3 | 3 BED SMALL | 150 | 1614 |
| 4 | Pink | D5 | 4 | 3 BED SMALL | 150 | 1613 |
| 5 | Grey | D1 | 5 | 3 BED SMALL | 147 | 1583 |
| 6 | White | ELEC BELOW | 6 | - | - | - |
| 7 | Blue | D3 | 7 | 3 BED SMALL | 148 | 1591 |
| 8 | Purple | D8 | 8 | 3 BED SMALL | 150 | 1618 |



| BUILDING -04 TOWER 9 | | | | | | |
|----------------------|---------|------------|---------|-------------|---------------------|-------|
| SL. NO | COLOURE | TYPE | UNIT NO | NO OF BED | SUPER BUILT UP AREA | |
| | | | | | (SMT) | (SFT) |
| 1 | | D2 | 1 | 3 BED SMALL | 149 | 1600 |
| 2 | | E1 | 2 | 3 BED SMALL | 151 | 1624 |
| 3 | | ELEC BELOW | 3 | - | - | - |
| 4 | | D12 | 4 | 3 BED SMALL | 150 | 1613 |
| 5 | | D11 | 5 | 3 BED SMALL | 147 | 1583 |
| 6 | | E2 | 6 | 3 BED SMALL | 177 | 1907 |
| 7 | | E4 | 7 | 3 BED SMALL | 148 | 1591 |
| 8 | | D7 | 8 | 3 BED SMALL | 150 | 1618 |



Artist's Impression



KEY PLAN

| BUILDING -05 TOWER 11 | | | | | | |
|-----------------------|-------------|------------|---------|-------------|---------------------------------|------|
| SL. NO | COLOUR | TYPE | UNIT NO | NO OF BED | SUPER BUILT UP AREA (SMT) (SFT) | |
| 1 | Red | D2 | 1 | 3 BED SMALL | 149 | 1600 |
| 2 | Orange | E1 | 2 | 3 BED LARGE | 151 | 1624 |
| 3 | Green | E3 | 3 | 3 BED LARGE | 179 | 1922 |
| 4 | Brown | D12 | 4 | 3 BED SMALL | 150 | 1613 |
| 5 | Light Green | D11 | 5 | 3 BED SMALL | 147 | 1583 |
| 6 | Grey | E2 | 6 | 3 BED LARGE | 177 | 1907 |
| 7 | White | ELEC BELOW | 7 | - | - | - |
| 8 | Blue | D7 | 8 | 3 BED SMALL | 150 | 1618 |

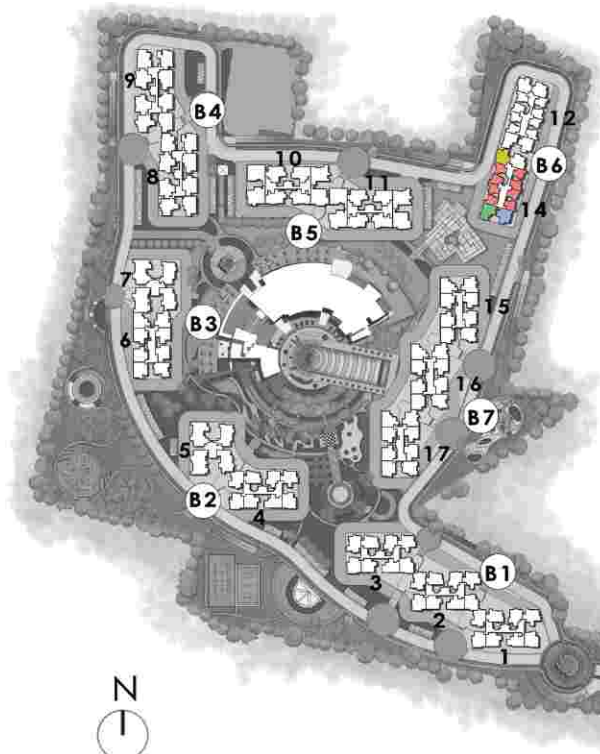




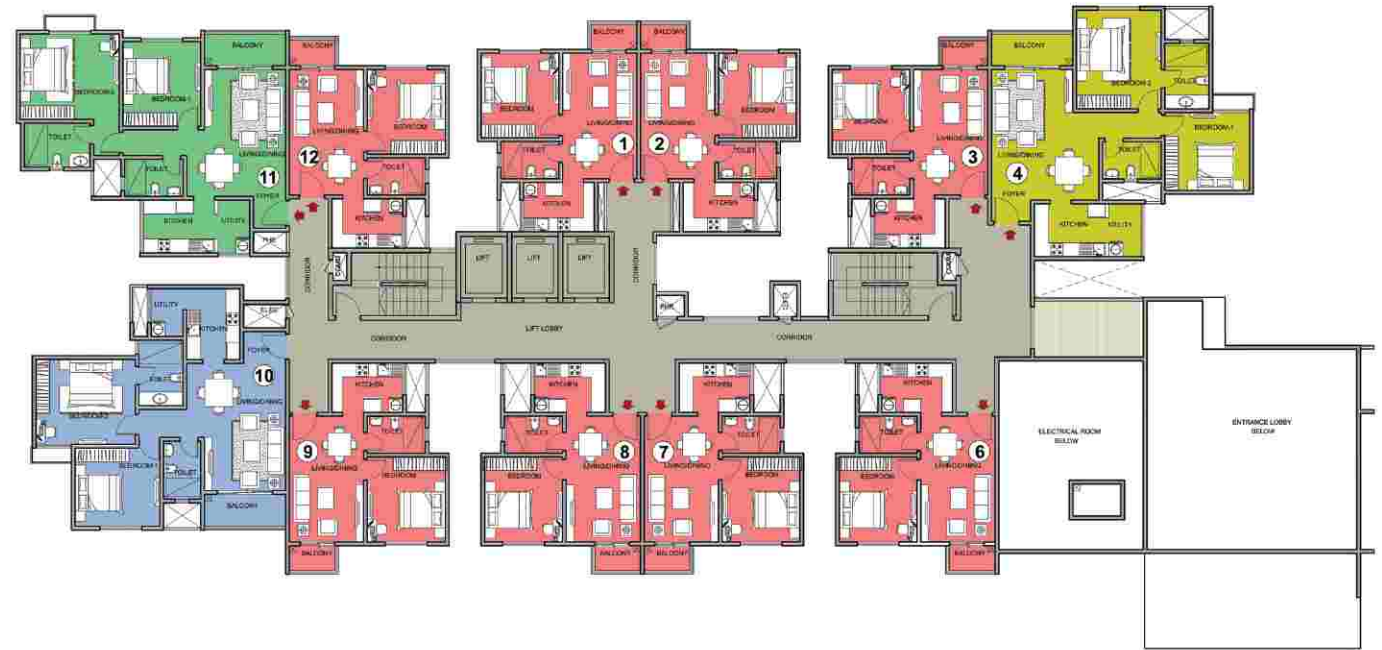
KEY PLAN



| BUILDING -06 TOWER 12 | | | | | | |
|-----------------------|--------|------|---------|-----------|---------------------|-------|
| SL. NO | COLOUR | TYPE | UNIT NO | NO OF BED | SUPER BUILT UP AREA | |
| | | | | | (SMT) | (SFT) |
| 1 | Red | A | 1 | 1 BED | 60 | 644 |
| 2 | Red | A | 2 | 1 BED | 60 | 644 |
| 3 | Red | A | 3 | 1 BED | 60 | 644 |
| 4 | Yellow | B6 | 4 | 2 BED | 113 | 1220 |
| 5 | Pink | B2 | 5 | 2 BED | 111 | 1198 |
| 6 | Red | A | 6 | 1 BED | 60 | 644 |
| 7 | Red | A | 7 | 1 BED | 60 | 644 |
| 8 | Red | A | 8 | 1 BED | 60 | 644 |
| 9 | Red | A | 9 | 1 BED | 60 | 644 |
| 10 | | ELEC | - | - | - | - |
| 11 | Green | B8 | 11 | 2 BED | 114 | 1223 |
| 12 | Red | A | 12 | 1 BED | 60 | 644 |



KEY PLAN



| BUILDING -06 TOWER 12 | | | | | | |
|-----------------------|---------|------------|---------|-----------|------------------------------------|------|
| SL. NO | COLOURE | TYPE | UNIT NO | NO OF BED | SUPER BUILT UP AREA (SMT) (SFT) | |
| 1 | Red | A | 1 | 1 BED | 60 | 644 |
| 2 | Red | A | 2 | 1 BED | 60 | 644 |
| 3 | Red | A | 3 | 1 BED | 60 | 644 |
| 4 | Yellow | B6 | 4 | 2 BED | 113 | 1220 |
| 5 | | ELEC BELOW | 5 | - | - | - |
| 6 | Red | A | 6 | 1 BED | 60 | 644 |
| 7 | Red | A | 7 | 1 BED | 60 | 644 |
| 8 | Red | A | 8 | 1 BED | 60 | 644 |
| 9 | Red | A | 9 | 1 BED | 60 | 644 |
| 10 | Blue | B1 | 10 | 2 BED | 111 | 1197 |
| 11 | Green | B8 | 11 | 2 BED | 114 | 1223 |
| 12 | Red | A | 12 | 1 BED | 60 | 644 |





| BUILDING -07 TOWER 15 | | | | | | |
|-----------------------|--------|------|---------|-----------|------------------------------------|------|
| SL.NO | COLOUR | TYPE | UNIT NO | NO OF BED | SUPER BUILT UP AREA (SMT) (SFT) | |
| 1 | | B11 | 1 | 2 BED | 115 | 1235 |
| 2 | | C8 | 2 | 2.5 BED | 128 | 1376 |
| 3 | | C4 | 3 | 2.5 BED | 127 | 1372 |
| 4 | | B3 | 4 | 2 BED | 112 | 1210 |
| 5 | | B5 | 5 | 2 BED | 113 | 1212 |
| 6 | | C5 | 6 | 2.5 BED | 128 | 1374 |
| 7 | | C6a | 7 | 1.5 BED | 97 | 1046 |
| 8 | | B9 | 8 | 2.5 BED | 114 | 1227 |

Tower 12 & 14



Artist's Impression



KEY PLAN



| BUILDING -07 TOWER 16 | | | | | | |
|-----------------------|--------|-----------------|---------|-----------|------------------------------------|------|
| SL.NO | COLOUR | TYPE | UNIT NO | NO OF BED | SUPER BUILT UP AREA (SMT) (SFT) | |
| 1 | | B11 | 1 | 2 BED | 115 | 1235 |
| 2 | | C8 | 2 | 2.5 BED | 128 | 1376 |
| 3 | | LANDSCAPE BELOW | 3 | - | - | - |
| 4 | | B3 | 4 | 2 BED | 112 | 1210 |
| 5 | | B5 | 5 | 2 BED | 113 | 1212 |
| 6 | | C5 | 6 | 2.5 BED | 128 | 1374 |
| 7 | | C6a | 7 | 1.5 BED | 97 | 1046 |
| 8 | | B9 | 8 | 2 BED | 114 | 1227 |



N
 KEY PLAN



| BUILDING -07 TOWER 17 | | | | | | |
|-----------------------|--------|------------|---------|-----------|---------------------------------|------|
| SL.NO | COLOUR | TYPE | UNIT NO | NO OF BED | SUPER BUILT UP AREA (SMT) (SFT) | |
| 1 | | B11 | 1 | 2 BED | 115 | 1235 |
| 2 | | C8 | 2 | 2.5 BED | 128 | 1376 |
| 3 | | ELEC BELOW | 3 | - | - | - |
| 4 | | B3 | 4 | 2 BED | 112 | 1210 |
| 5 | | B5 | 5 | 2 BED | 113 | 1212 |
| 6 | | C5 | 6 | 2.5 BED | 128 | 1374 |
| 7 | | C6 | 7 | 2.5 BED | 128 | 1046 |
| 8 | | B9 | 8 | 2 BED | 114 | 1227 |

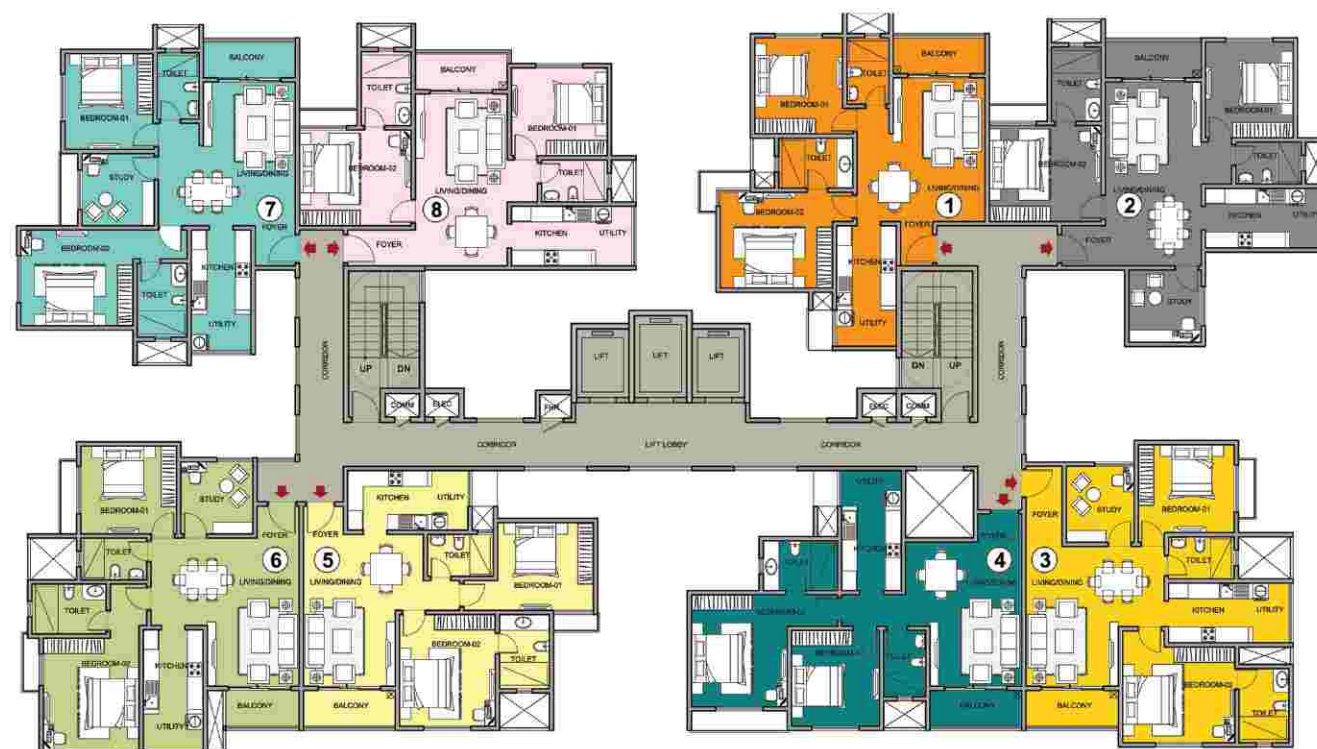
Tower 10 & 11



Artist's Impression



KEY PLAN

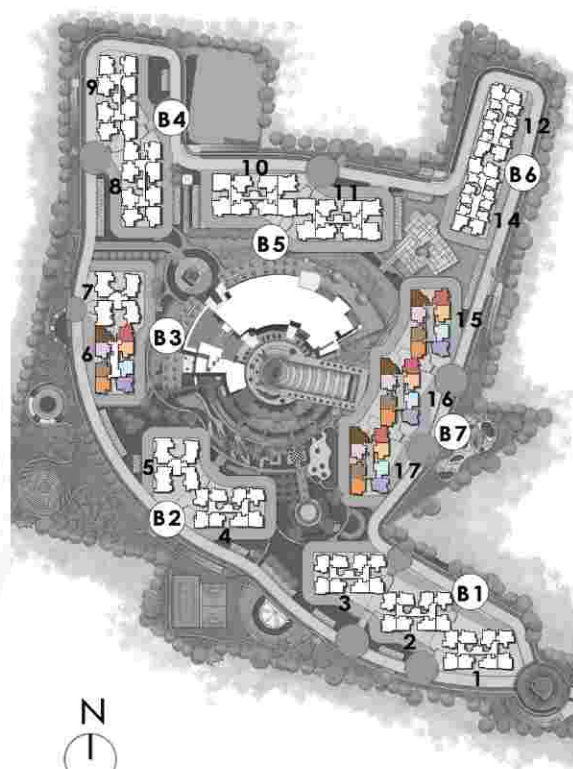


| SL. NO. | COLOR | BUILDING 01 & 02 | | TOWER 1, 2, 3 & 4 | | |
|---------|-------------|------------------|----------|-------------------|------------------------------------|------|
| | | TYPE | UNIT NOS | NO OF BED | SUPER BUILT UP AREA (SMT) (SFT) | |
| 1 | Orange | B10 | 1 | 2 BED | 114 | 1232 |
| 2 | Grey | C3 | 2 | 2.5 BED | 127 | 1368 |
| 3 | Yellow | C1 | 3 | 2.5 BED | 126 | 1358 |
| 4 | Teal | B12 | 4 | 2.0 BED | 115 | 1241 |
| 5 | Light Green | B4 | 5 | 2 BED | 112 | 1211 |
| 6 | Light Green | C2 | 6 | 2.5 BED | 127 | 1366 |
| 7 | Teal | C7 | 7 | 2.5 BED | 128 | 1375 |
| 8 | Pink | B7 | 8 | 2 BED | 113 | 1221 |

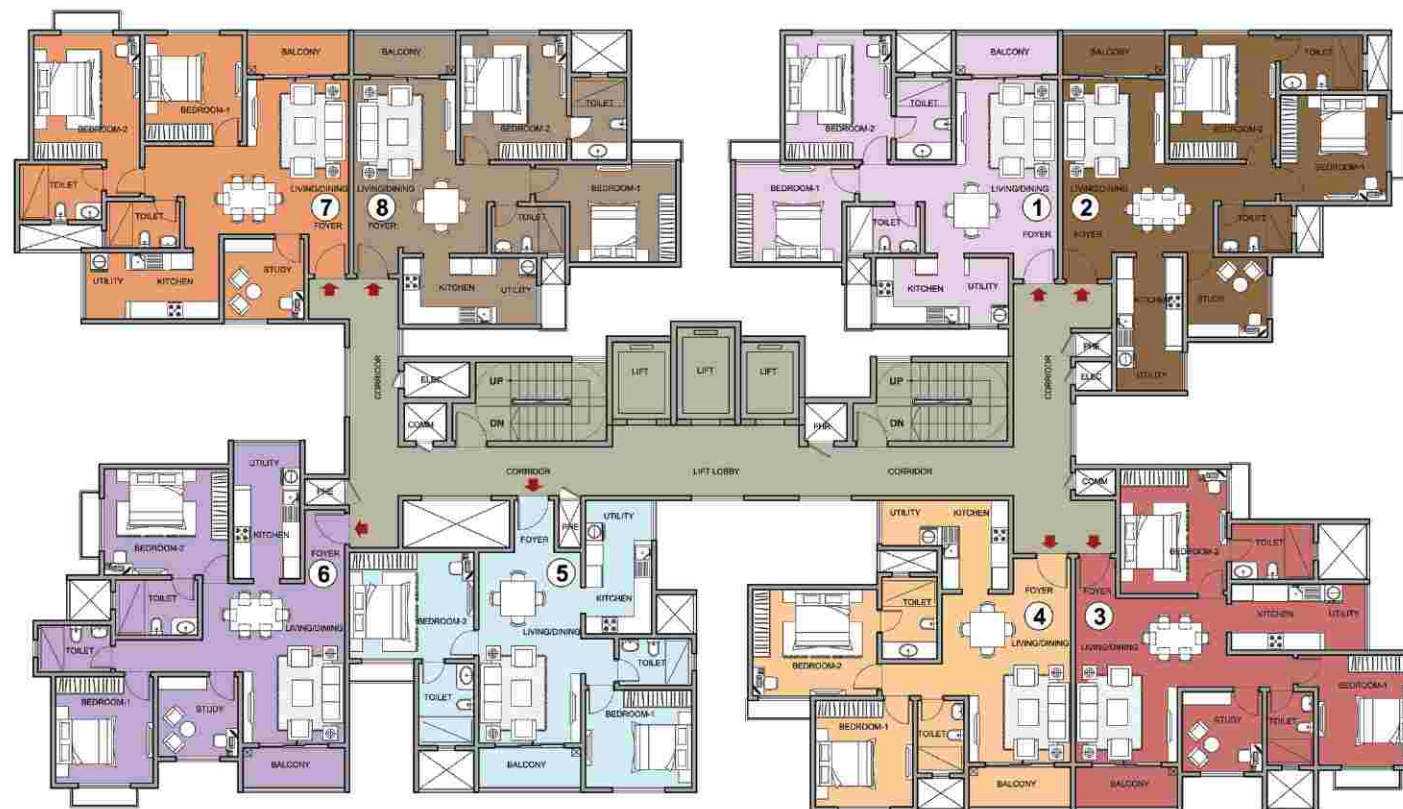




Tower 6 (Level 3 - Level 22)
Tower 15, 16, 17 (Level 3 - Level 19)

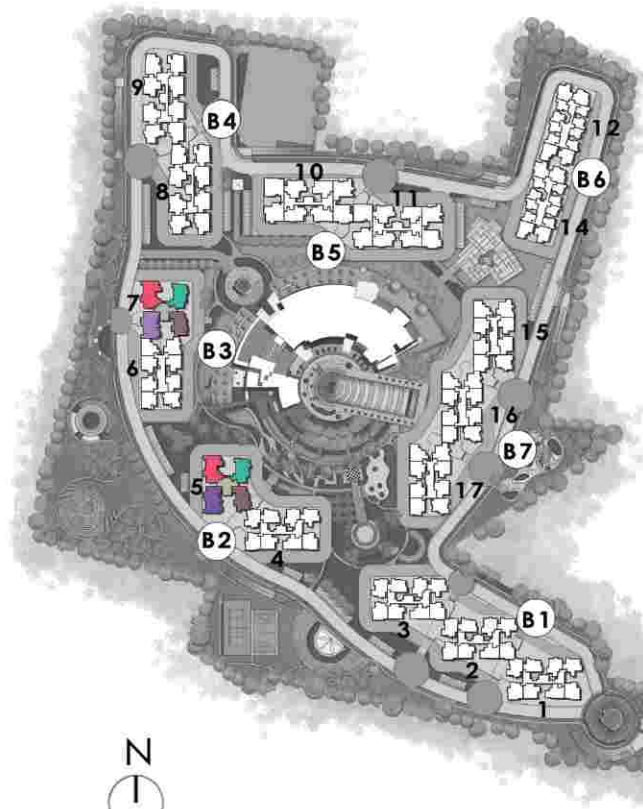


N
KEY PLAN



| SL. NO. | COLOR | TYPE | UNIT NOS | NO OF BED | TOWER 6, 15, 16 & 17 | |
|---------|-------|------|----------|-----------|---------------------------|-------|
| | | | | | SUPER BUILT UP AREA (SMT) | (SFT) |
| 1 | | B11 | 1 | 2 BED | 115 | 1235 |
| 2 | | C8 | 2 | 2.5 BED | 128 | 1376 |
| 3 | | C4 | 3 | 2.5 BED | 149 | 1372 |
| 4 | | B3 | 4 | 2 BED | 112 | 1210 |
| 5 | | B5 | 5 | 2 BED | 113 | 1212 |
| 6 | | C5 | 6 | 2.5 BED | 128 | 1374 |
| 7 | | C6 | 7 | 2.5 BED | 128 | 1374 |
| 8 | | B9 | 8 | 2 BED | 114 | 1227 |

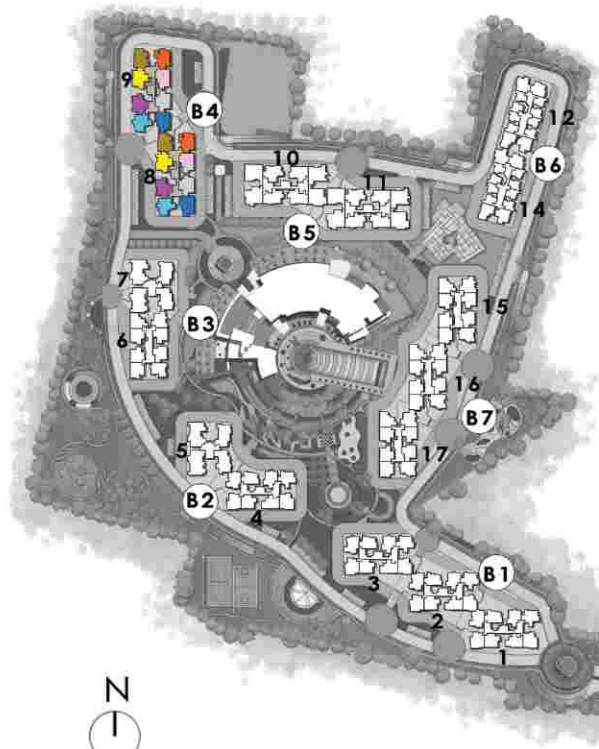




KEY PLAN



| SL. NO. | BUILDING 02 & 03 | | | TOWER 5 & 7 | | |
|---------|------------------|------|----------|-------------|---------------------|---------|
| | COLOR | TYPE | UNIT NOS | NO OF BED | SUPER BUILT UP AREA | |
| | | | | | (SMT) | (SFT) |
| 1 | Green | E5 | 1 | 3 BED LARGE | 1929 Sft | 179 Smt |
| 2 | Purple | E6 | 2 | 3 BED LARGE | 1933 Sft | 180 Smt |
| 3 | Blue | F2 | 3 | 4 BED | 2467 Sft | 229 Smt |
| 4 | Red | F1 | 4 | 4 BED | 2462 Sft | 229 Smt |



N
KEY PLAN

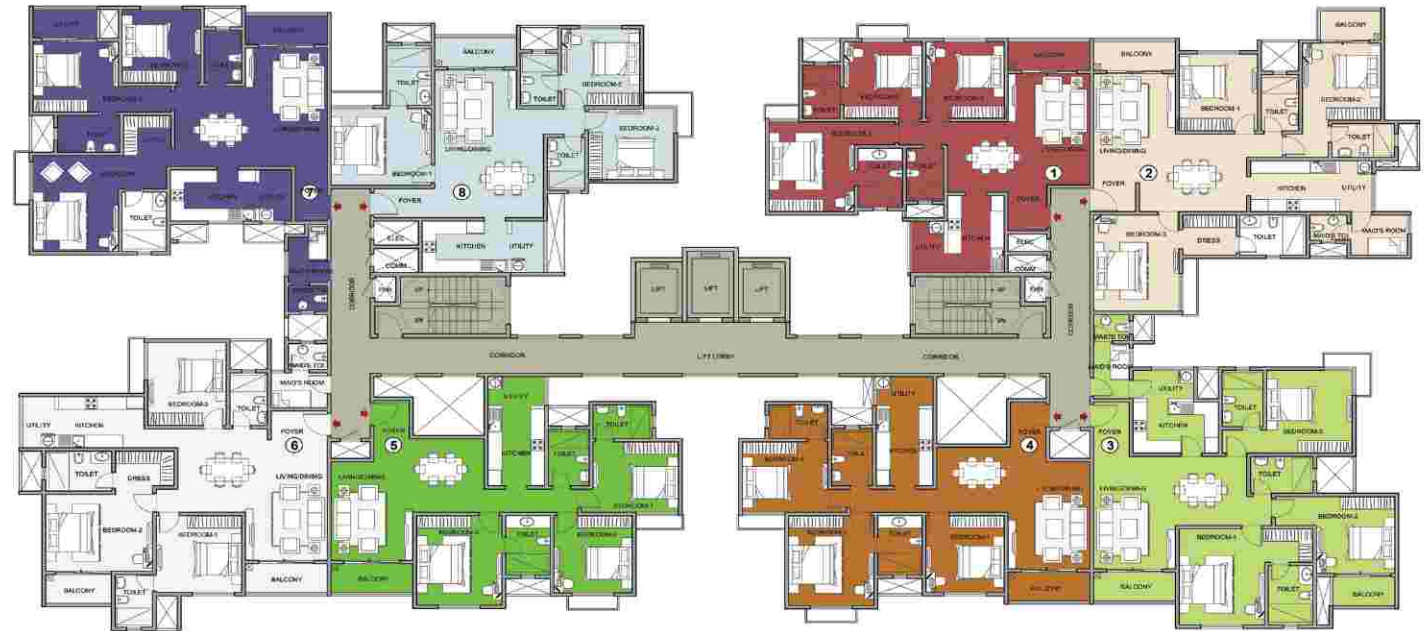
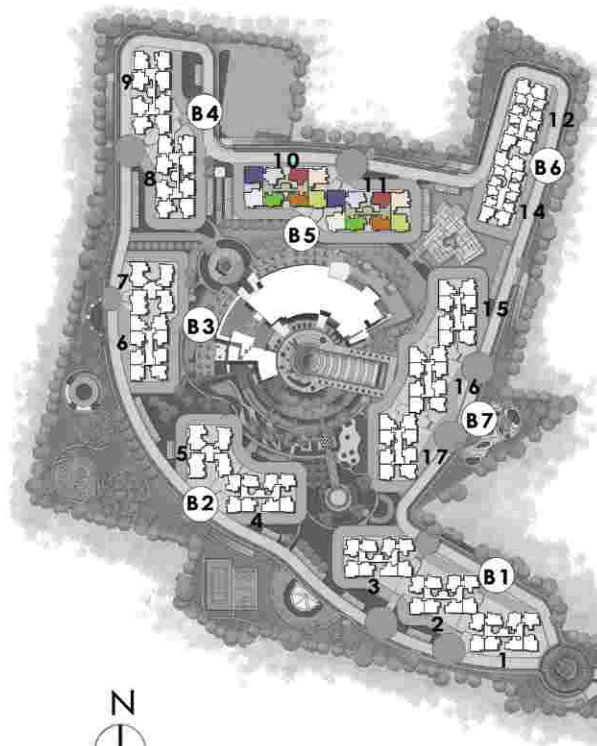


| SL. NO. | COLOR | TYPE | UNIT NOS | NO OF BED | TOWER 8 & 9 | |
|---------|--------|------|----------|-------------|------------------------------------|------|
| | | | | | SUPER BUILT UP AREA (SMT) (SFT) | |
| 1 | Yellow | D4 | 1 | 3 BED SMALL | 149 | 1600 |
| 2 | Brown | D10 | 2 | 3 BED SMALL | 151 | 1624 |
| 3 | Orange | D6 | 3 | 3 BED SMALL | 150 | 1614 |
| 4 | Pink | D5 | 4 | 3 BED LARGE | 150 | 1613 |
| 5 | Grey | D1 | 5 | 3 BED SMALL | 147 | 1583 |
| 6 | Blue | D9 | 6 | 3 BED LARGE | 151 | 1622 |
| 7 | Teal | D3 | 7 | 3 BED LARGE | 148 | 1591 |
| 8 | Purple | D8 | 8 | 3 BED SMALL | 150 | 1618 |

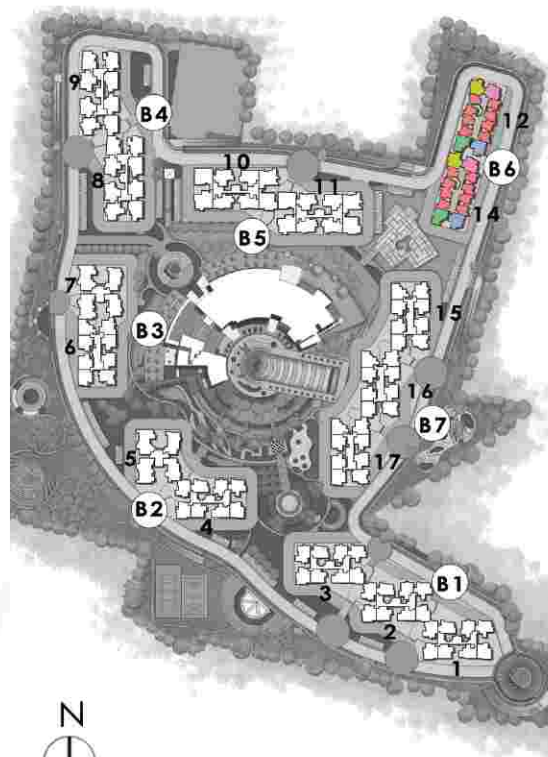


Artist's Impression

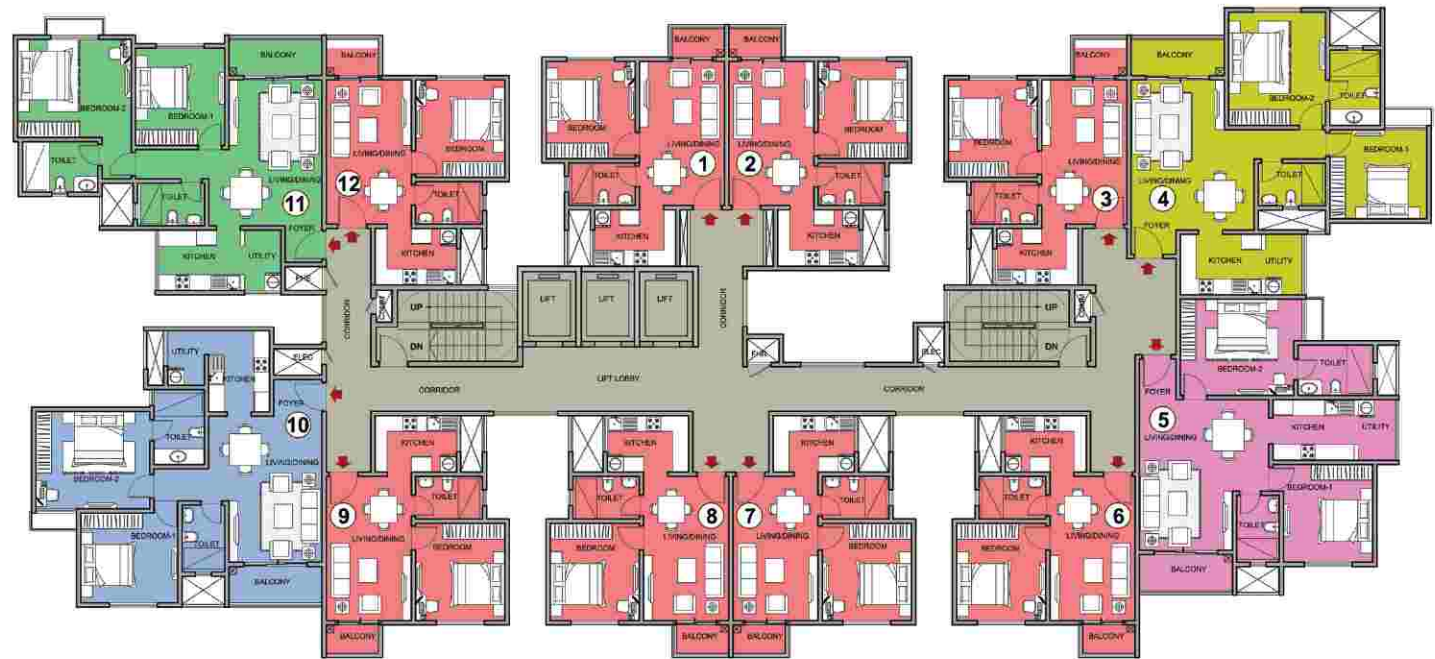




| SL NO. | BUILDING 05 | | | TOWER 10 & 11 | | |
|--------|-------------|------|----------|---------------|---------------------|-------|
| | COLOR | TYPE | UNIT NOS | NO OF BED | SUPER BUILT UP AREA | |
| | | | | | (SMT) | (SFT) |
| 1 | Red | D2 | 1 | 3 BED SMALL | 148 | 1588 |
| 2 | Orange | E1 | 2 | 3 BED SMALL | 176 | 1902 |
| 3 | Green | E3 | 3 | 3 BED SMALL | 179 | 1922 |
| 4 | Brown | D12 | 4 | 3 BED LARGE | 152 | 1632 |
| 5 | Light Green | D11 | 5 | 3 BED SMALL | 151 | 1631 |
| 6 | White | E2 | 6 | 3 BED LARGE | 177 | 1907 |
| 7 | Dark Blue | E4 | 7 | 3 BED LARGE | 179 | 1927 |
| 8 | Light Blue | D7 | 8 | 3 BED SMALL | 150 | 1614 |



KEY PLAN

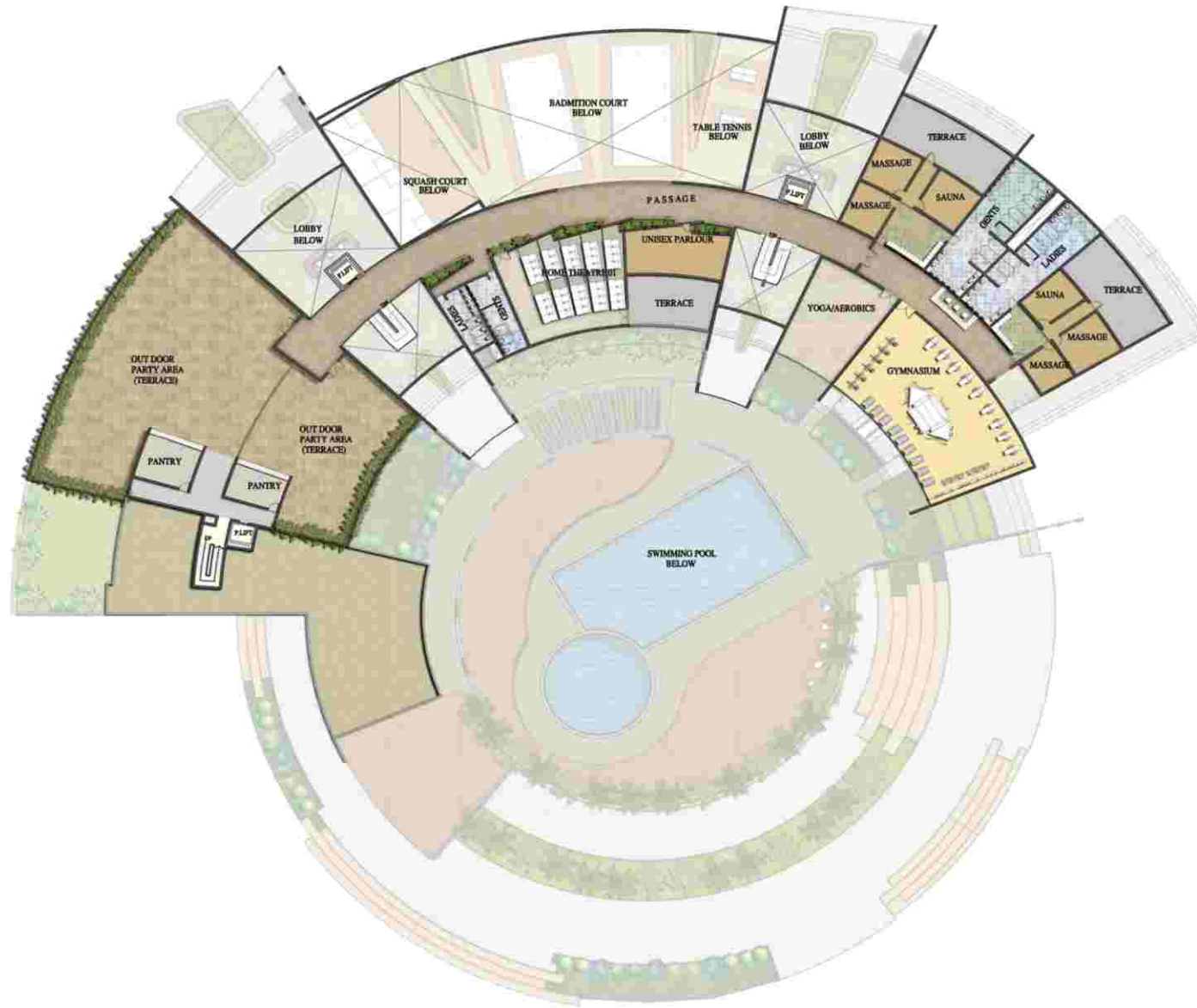


| SL NO. | COLOR | BUILDING 06 | | TOWER 12 & 14 | | |
|--------|--------|-------------|----------|---------------|---------------------------|-------|
| | | TYPE | UNIT NOS | NO OF BED | SUPER BUILT UP AREA (SMT) | (SFT) |
| 1 | Red | A | 1 | 1 BED | 60 | 644 |
| 2 | Red | A | 2 | 1 BED | 60 | 644 |
| 3 | Red | A | 3 | 1 BED | 60 | 644 |
| 4 | Yellow | B6 | 4 | 2 BED | 113 | 1220 |
| 5 | Pink | B2 | 5 | 2 BED | 111 | 1198 |
| 6 | Red | A | 6 | 1 BED | 60 | 644 |
| 7 | Red | A | 7 | 1 BED | 60 | 644 |
| 8 | Red | A | 8 | 1 BED | 60 | 644 |
| 9 | Red | A | 9 | 1 BED | 60 | 644 |
| 10 | Blue | B1 | 10 | 2 BED | 111 | 1197 |
| 11 | Green | B8 | 11 | 2 BED | 114 | 1223 |
| 12 | Red | A | 12 | 1 BED | 60 | 644 |



Artist's Impression

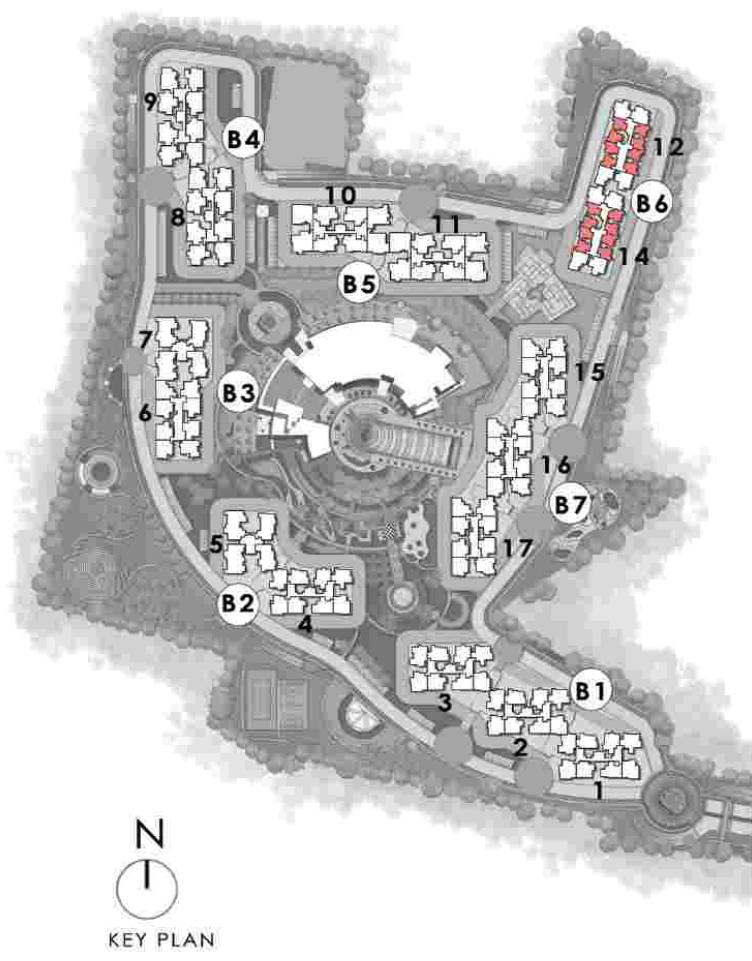




Night View



Artist's Impression



TYPE A (1.0 BED)

- SUPER BUILT UP AREA - 60 smt / 644 sft
- CARPET AREA - 42 smt / 450 sft
- BUILDING - 06
- TOWER - 12, 14
- TYPICAL - (LEVEL 1-17)

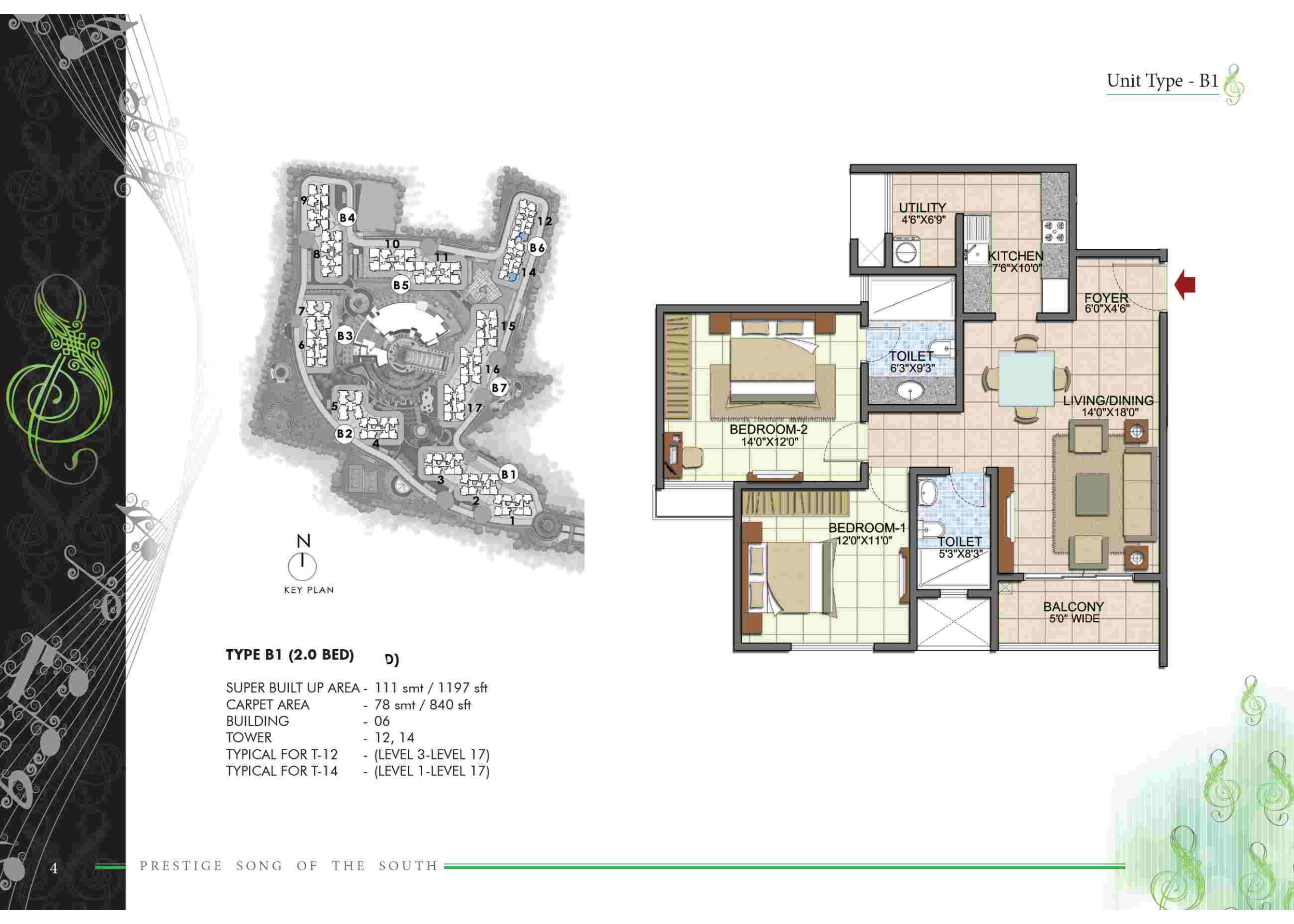




N
KEY PLAN

TYPE B1 (2.0 BED) D)

- SUPER BUILT UP AREA - 111 smt / 1197 sft
- CARPET AREA - 78 smt / 840 sft
- BUILDING - 06
- TOWER - 12, 14
- TYPICAL FOR T-12 - (LEVEL 3-LEVEL 17)
- TYPICAL FOR T-14 - (LEVEL 1-LEVEL 17)





TYPE B2 (2.0 BED)

- SUPER BUILT UP AREA- 111 smt / 1198 sft
- CARPET AREA - 79 smt / 850 sft
- BUILDING - 06
- TOWER - 12, 14
- TYPICAL FOR T-12 - (LEVEL 1-LEVEL 17)
- TYPICAL FOR T-14 - (LEVEL 3-LEVEL 17)



N
KEY PLAN

TYPE B3 (2.0 BED)

- SUPER BUILT UP AREA - 112 smt / 1210 sft
- CARPET AREA - 79 smt / 851 sft
- BUILDING - 03, 07
- TOWER - 6, 15, 16, 17
- TYPICAL FOR T-6 - (LEVEL 1- LEVEL 22)
- TYPICAL FOR T-15, 16 & 17 - (LEVEL 1- LEVEL 19)





TYPE B4 (2.0 BED)

- SUPER BUILT UP AREA - 112 smt / 1211 sft
- CARPET AREA - 79 smt / 855 sft
- BUILDING - 01, 02
- TOWER - 1, 2, 3, 4
- TYPICAL FOR T-4 - (LEVEL 1- LEVEL 22)
- TYPICAL FOR T-1, 2 & 3 - (LEVEL 1- LEVEL 19)





TYPE B5 (2.0 BED)

- SUPER BUILT UP AREA - 113 smt / 1212 sft
- CARPET AREA - 78 smt / 845 sft
- BUILDING - 02, 07
- TOWER - 6, 15, 16, 17
- TYPICAL FOR T-6 - (LEVEL 1- LEVEL 22)
- TYPICAL FOR T-15, 16 & 17 - (LEVEL 1- LEVEL 19)

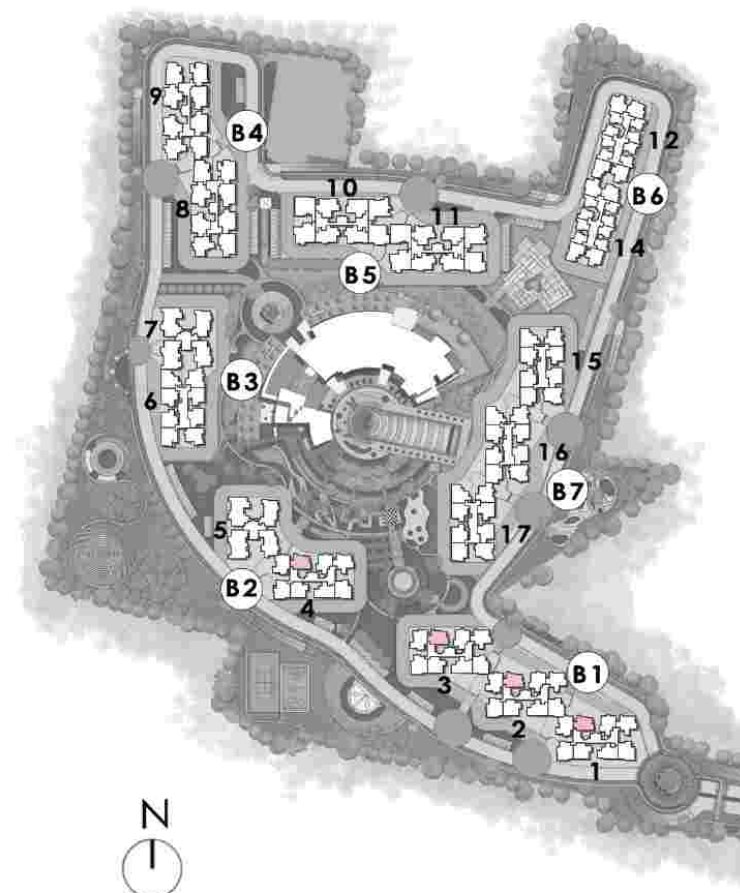




TYPE B6 (2.0 BED)

- SUPER BUILT UP AREA - 113 smt / 1220 sft
- CARPET AREA - 79 smt / 854 sft
- BUILDING - 06
- TOWER - 12, 14
- TYPICAL FOR T-12 & 14 - (LEVEL 1- LEVEL 17)





N
KEY PLAN



TYPE B7 (2.0 BED)

- SUPER BUILT UP AREA - 113 smt / 1221 sft
- CARPET AREA - 80 smt / 856 sft
- BUILDING - 01, 02
- TOWER - 1, 2, 3, 4
- TYPICAL FOR T-4 - (LEVEL 1- LEVEL 22)
- TYPICAL FOR T-1, 2 & 3 - (LEVEL 1- LEVEL 19)



TYPE B8 (2.0 BED)

SUPER BUILT UP AREA - 114 smt / 1223 sft
 CARPET AREA - 80 smt / 859 sft
 BUILDING - 06
 TOWER - 12, 14
 TYPICAL FOR T-12 & 14 - (LEVEL 1- LEVEL 17)



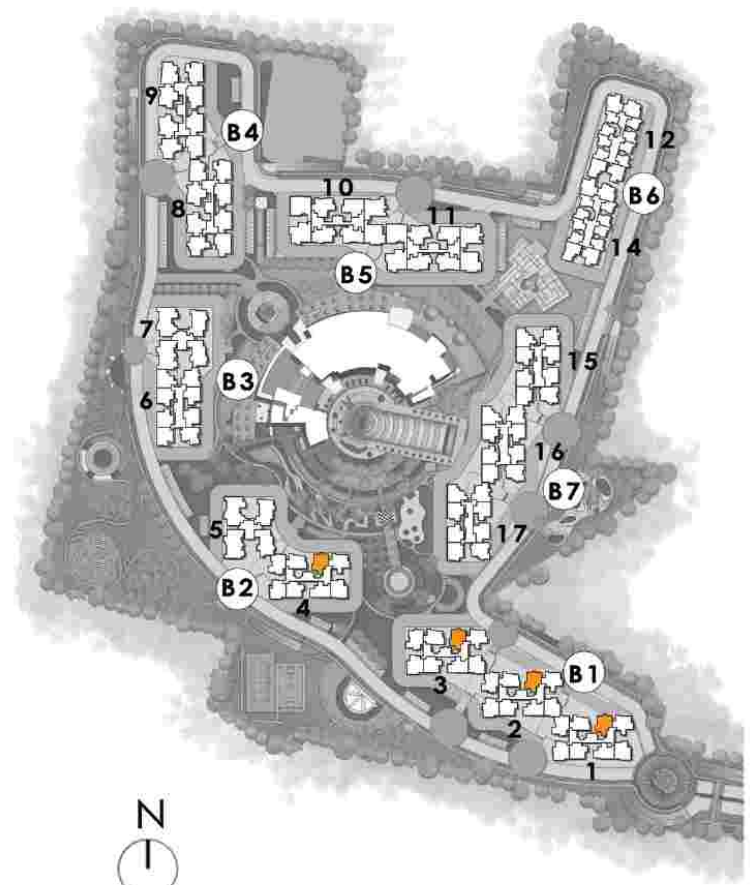


KEY PLAN

TYPE B9 (2.0 BED)

- SUPER BUILT UP AREA - 114 smt / 1227 sft
- CARPET AREA - 80 smt / 862 sft
- BUILDING - 02, 07
- TOWER - 6, 15, 16, 17
- TYPICAL FOR T-6 - (LEVEL 1- LEVEL 22)
- TYPICAL FOR T-15, 16 & 17 - (LEVEL 1- LEVEL 19)



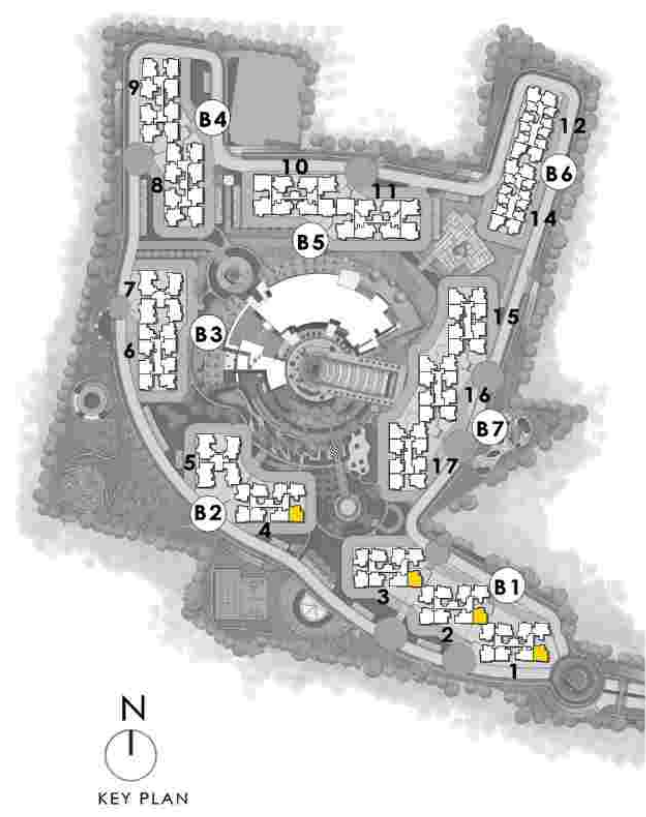


N
KEY PLAN

TYPE B10 (2.0 BED)

- SUPER BUILT UP AREA - 114 smt / 1232 sft
- CARPET AREA - 80 smt / 857 sft
- BUILDING - 01, 02
- TOWER - 1, 2, 3, 4
- TYPICAL FOR T-4 - (LEVEL 1- LEVEL 22)
- TYPICAL FOR T-1, 2 & 3 - (LEVEL 1- LEVEL 19)

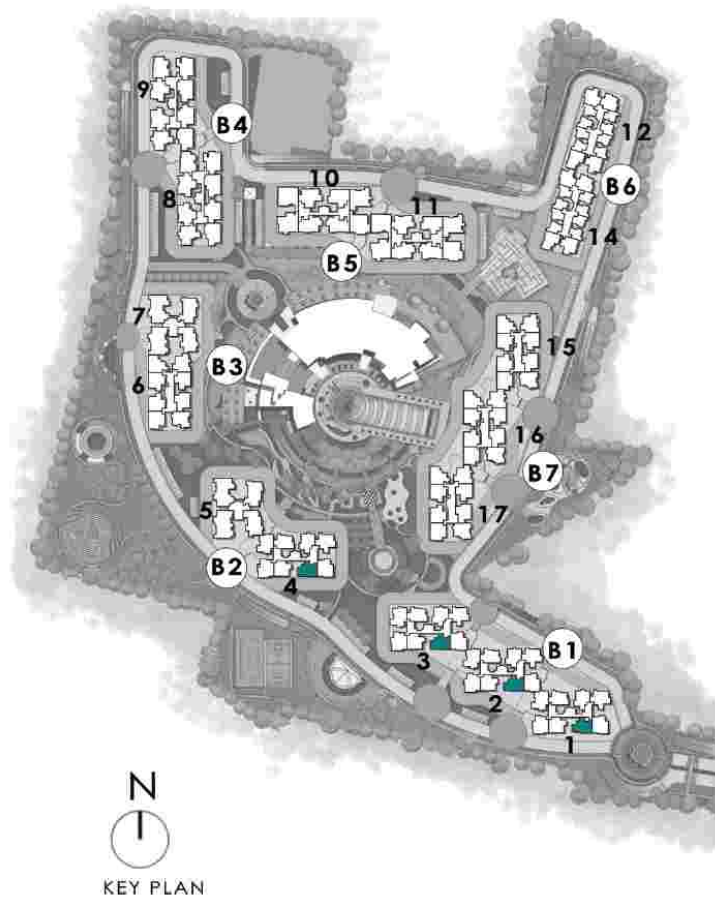




TYPE B11 (2.0 BED)

| | |
|----------------------------|-----------------------|
| SUPER BUILT UP AREA | - 115 smt / 1235 sft |
| CARPET AREA | - 80 smt / 865 sft |
| BUILDING | - 02, 07 |
| TOWER | - 6, 15, 16, 17 |
| TYPICAL FOR T-6 | - (LEVEL 1- LEVEL 22) |
| TYPICAL FOR T-15, 16 & 17- | (LEVEL 1- LEVEL 19) |

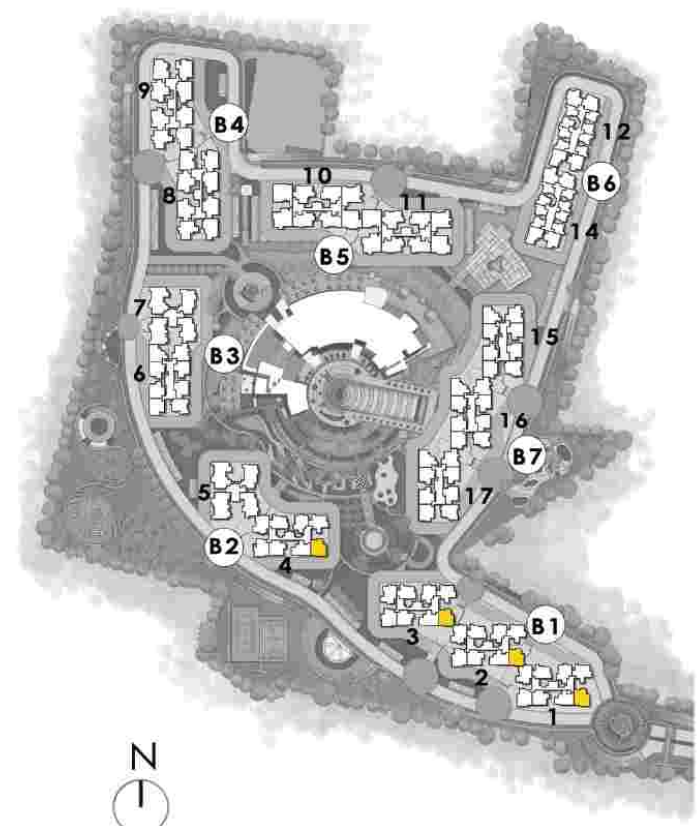




TYPE B12 (2.0 BED)

- SUPER BUILT UP AREA - 115 smt / 1241 sft
- CARPET AREA - 81 smt / 867 sft
- BUILDING - 01, 02
- TOWER - 1, 2, 3, 4
- TYPICAL FOR T-4 - (LEVEL 1- LEVEL 22)
- TYPICAL FOR T-1, 2 & 3 - (LEVEL 1- LEVEL 19)





TYPE C1 (2.5 BED)

- SUPER BUILT UP AREA - 126 smt / 1358 sft
- CARPET AREA - 89 smt / 962 sft
- BUILDING - 01, 02
- TOWER - 1, 2, 3, 4
- TYPICAL FOR T-4 - (LEVEL 1 - LEVEL 22)
- TYPICAL FOR T-1 - (LEVEL 1 - LEVEL 19)
- TYPICAL FOR T-2 & 3 - (LEVEL 3 - LEVEL 19)

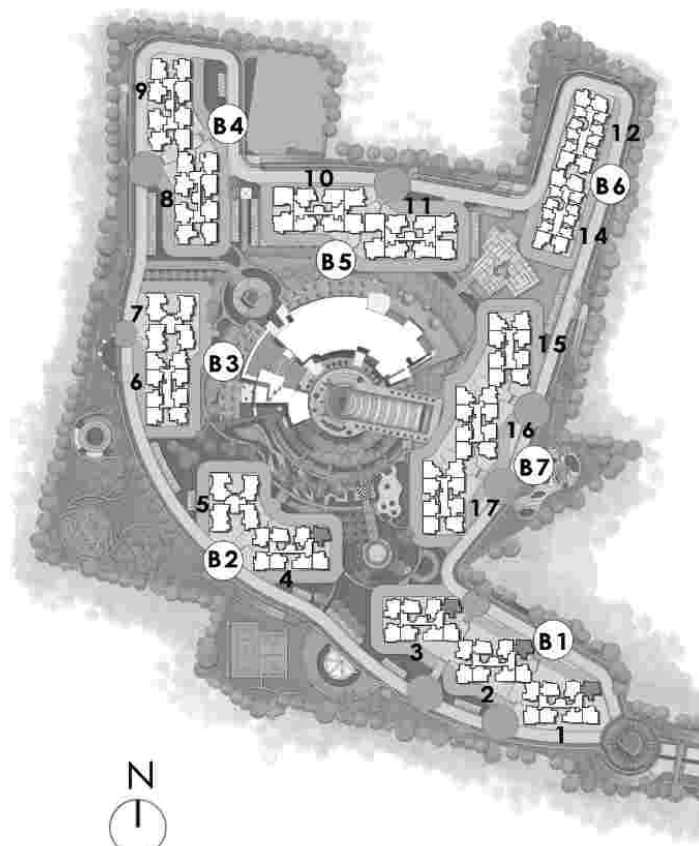




TYPE C2 (2.5 BED)

- SUPER BUILT UP AREA - 127 smt / 1366 sft
- CARPET AREA - 91 smt / 985 sft
- BUILDING - 01, 02
- TOWER - 1, 2, 3, 4
- TYPICAL FOR T-4 - (LEVEL 1- LEVEL 22)
- TYPICAL FOR T-1, 2 & 3 - (LEVEL 1- LEVEL 19)





TYPE C3 (2.5 BED)

- SUPER BUILT UP AREA - 127 smt / 1368 sft
- CARPET AREA - 89 smt / 960 sft
- BUILDING - 01, 02
- TOWER - 1, 2, 3, 4
- TYPICAL FOR T-4 - (LEVEL 1- LEVEL 22)
- TYPICAL FOR T-1, 2 & 3 - (LEVEL 1- LEVEL 19)





TYPE C4 (2.5 BED)

- SUPER BUILT UP AREA - 127 smt / 1372 sft
- CARPET AREA - 91 smt / 975 sft
- BUILDING - 02, 07
- TOWER - 5, 15, 16, 17
- TYPICAL FOR T-5 - (LEVEL 1- LEVEL 22)
- TYPICAL FOR T-15 - (LEVEL 1- LEVEL 19)
- TYPICAL FOR T-16 & 17 - (LEVEL 3- LEVEL 19)





N
KEY PLAN

TYPE C5 (2.5 BED)

| | |
|---------------------------|-----------------------|
| SUPER BUILT UP AREA | - 128 smt / 1374 sft |
| CARPET AREA | - 90 smt / 973 sft |
| BUILDING | - 03, 07 |
| TOWER | - 6, 15, 16, 17 |
| TYPICAL FOR T-6 | - (LEVEL 3- LEVEL 22) |
| TYPICAL FOR T-15, 16 & 17 | - (LEVEL 1- LEVEL 19) |





TYPE C6 (2.5 BED)

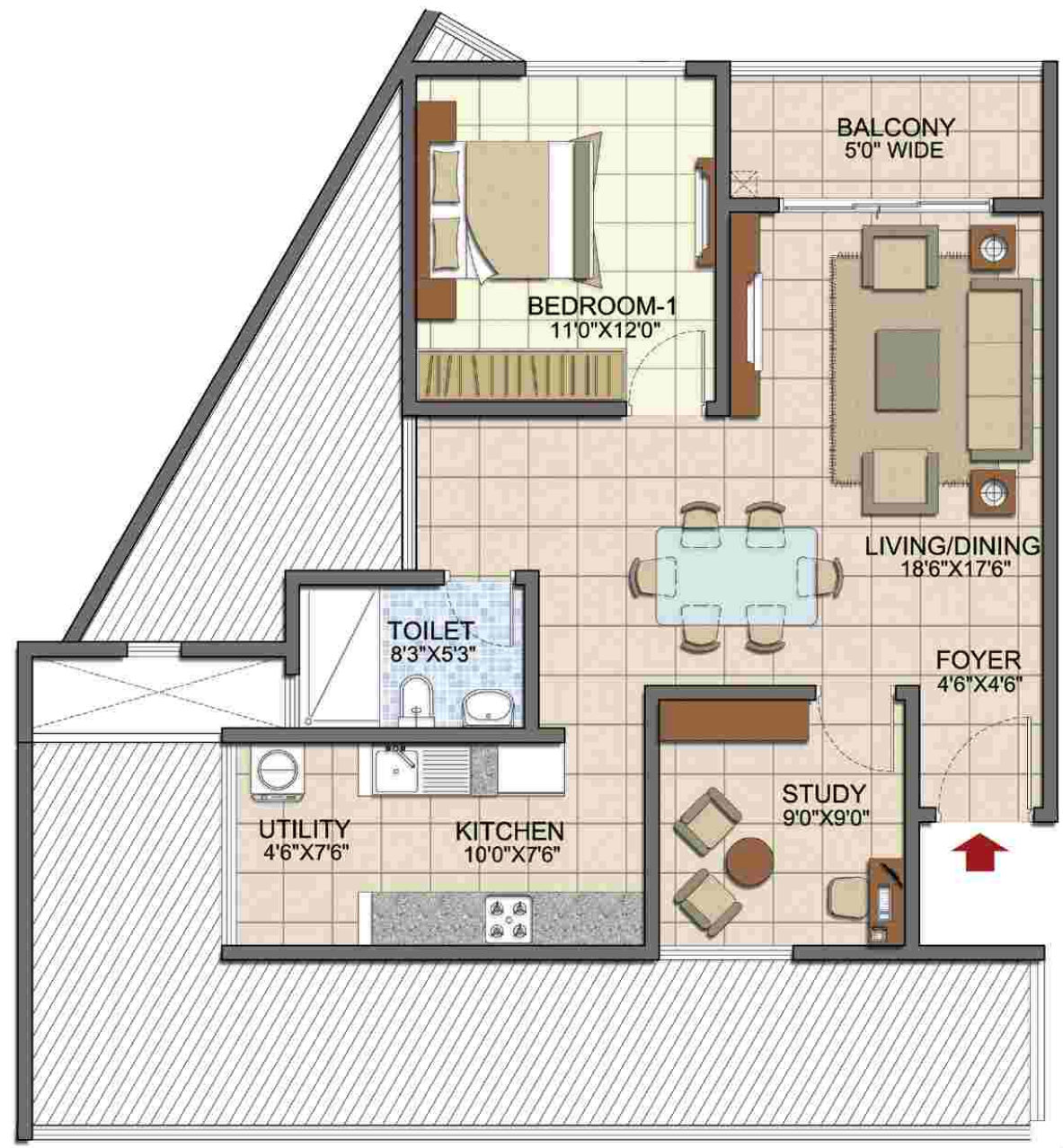
- SUPER BUILT UP AREA - 128 smt / 1374 sft
- CARPET AREA - 91 smt / 984 sft
- BUILDING - 02, 07
- TOWER - 6, 15, 16, 17
- TYPICAL FOR T-6 - (LEVEL 1- LEVEL 22)
- TYPICAL FOR T-17 - (LEVEL 1- LEVEL 19)
- TYPICAL FOR T-15 & 16 - (LEVEL 3- LEVEL 19)





TYPE C6a (1.5 BED)

SUPER BUILT UP AREA - 97 smt / 1046 sft
 CARPET AREA - 67 smt / 723 sft
 BUILDING - 07
 TOWER - 15, 16 (LEVEL-2)





N
KEY PLAN

TYPE C7 (2.5 BED)

- SUPER BUILT UP AREA - 128 smt / 1375 sft
- CARPET AREA - 90 smt / 972 sft
- BUILDING - 01, 02
- TOWER - 1, 4
- TYPICAL FOR T-4 - (LEVEL 3- LEVEL 22)
- TYPICAL FOR T-1 - (LEVEL 3- LEVEL 19)





KEY PLAN

TYPE C7' (2.5 BED)

- SUPER BUILT UP AREA - 128 smt / 1375 sft
- CARPET AREA - 90 smt / 972 sft
- BUILDING - 01, 02
- TOWER - 2, 3
- TYPICAL FOR T-2 - (LEVEL 3- LEVEL 19)
- TYPICAL FOR T-3 - (LEVEL 1- LEVEL 19)

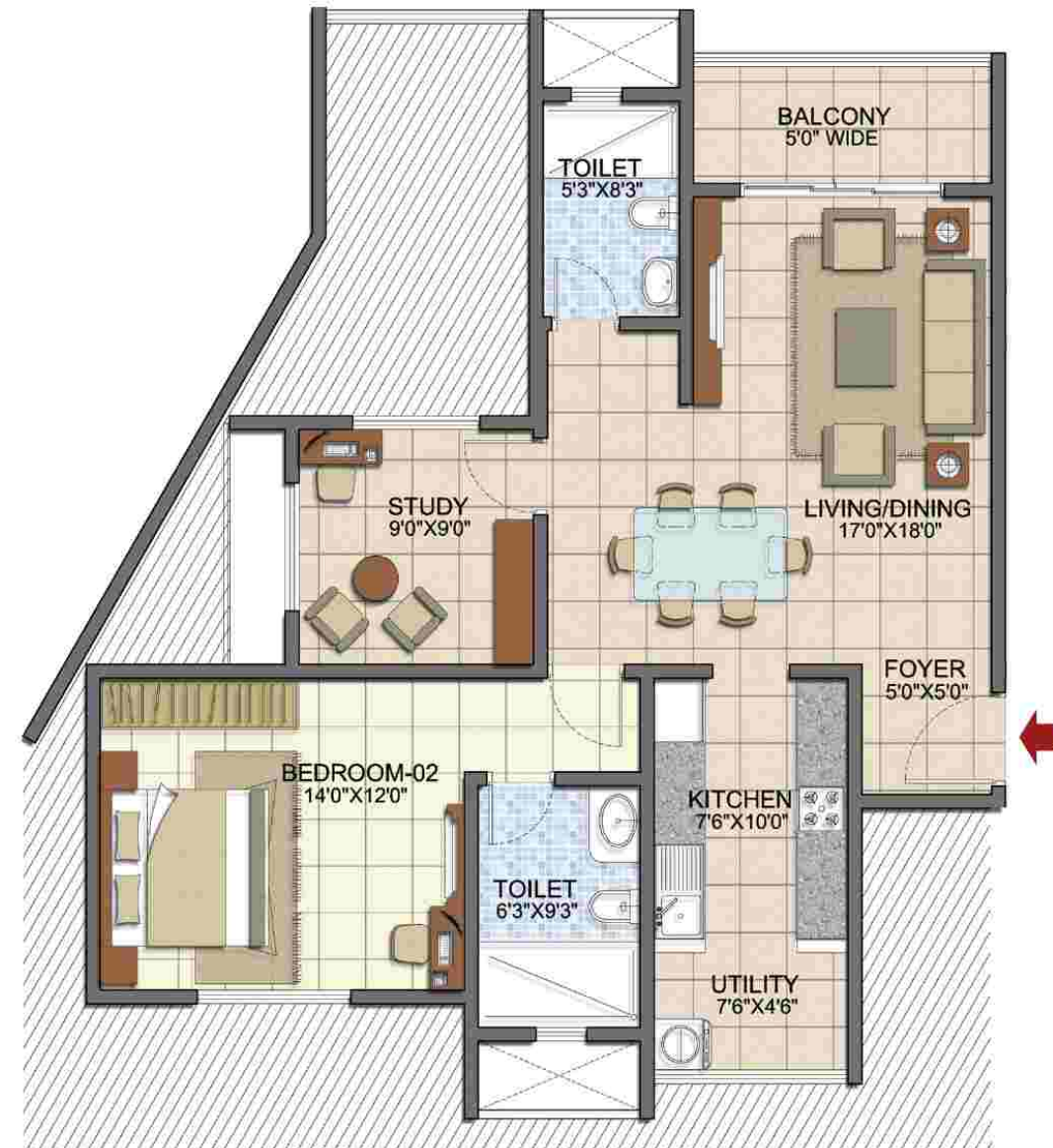


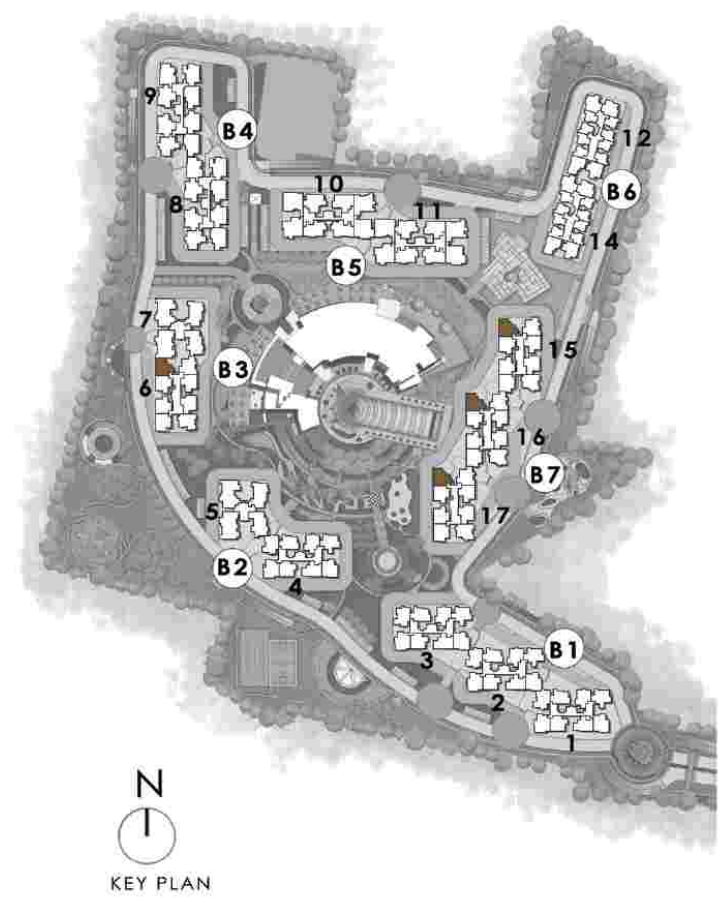


N
KEY PLAN

TYPE C7a (1.5 BED)

SUPER BUILT UP AREA - 111 smt / 1198 sft
 CARPET AREA - 77 smt / 830 sft
 BUILDING - 01
 TOWER - 1 & 2 (LEVEL-2)





TYPE C8 (2.5 BED)

| | |
|----------------------------|-----------------------|
| SUPER BUILT UP AREA | - 128 smt / 1376 sft |
| CARPET AREA | - 91 smt / 977 sft |
| BUILDING | - 03, 07 |
| TOWER | - 6, 15, 16, 17 |
| TYPICAL FOR T-6 | - (LEVEL 3- LEVEL 22) |
| TYPICAL FOR T-15, 16, & 17 | - (LEVEL 1- LEVEL 19) |



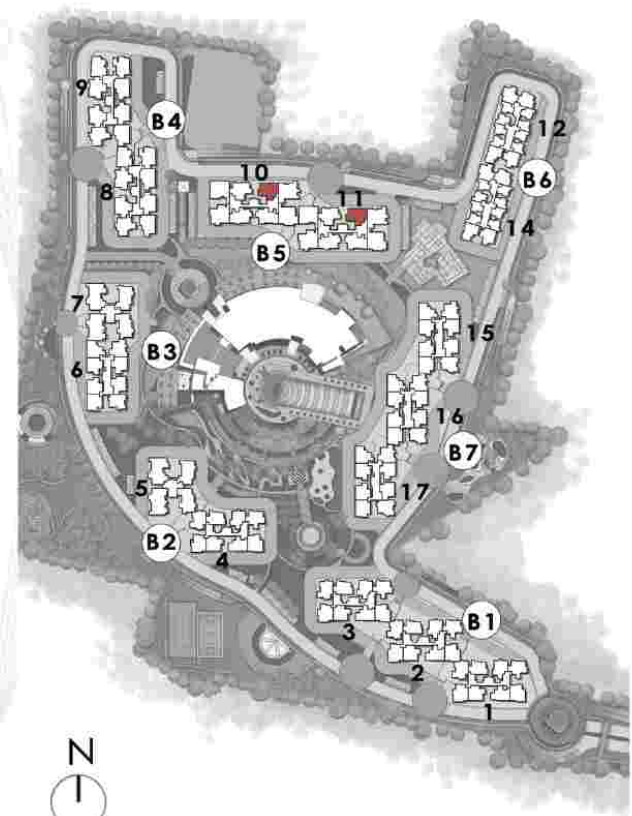

KEY PLAN



TYPE D1 (3.0 BED SMALL)

- SUPER BUILT UP AREA - 147 smt / 1583 sft
- CARPET AREA - 105 smt / 1134 sft
- BUILDING - 04
- TOWER - 8, 9 (LEVEL 1- LEVEL 17)





N
KEY PLAN

TYPE D2 (3.0 BED SMALL)

SUPER BUILT UP AREA - 148 smt / 1588 sft
 CARPET AREA - 106 smt / 1146 sft
 BUILDING - 05
 TOWER - 10, 11 (LEVEL 1- LEVEL 17)



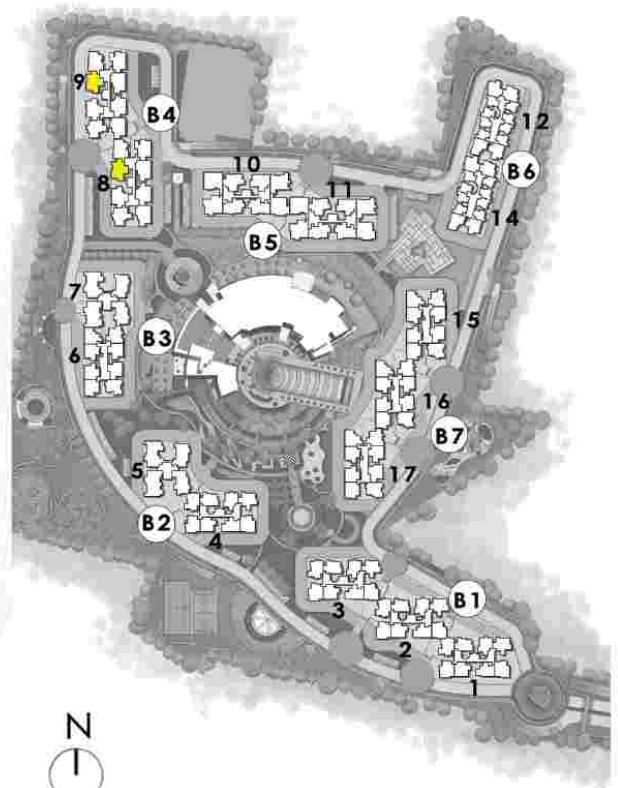


N
KEY PLAN

TYPE D3 (3.0 BED SMALL)

SUPER BUILT UP AREA - 148 smt / 1591 sft
 CARPET AREA - 105 smt / 1132 sft
 BUILDING - 04
 TOWER - 8, 9 (LEVEL 1- LEVEL 17)





TYPE D4 (3.0 BED SMALL)
 SUPER BUILT UP AREA - 149 smt / 1600 sft
 CARPET AREA - 105 smt / 1132 sft
 BUILDING - 04
 TOWER - 8, 9 (LEVEL 1 - LEVEL 17)





TYPE D5 (3.0 BED SMALL)

SUPER BUILT UP AREA - 150 smt / 1613 sft
 CARPET AREA - 108 smt / 1167 sft
 BUILDING - 04
 TOWER - 8, 9 (LEVEL 1- LEVEL 17)





KEY PLAN



TYPE D6 (3.0 BED SMALL)

- SUPER BUILT UP AREA - 150 smt / 1614 sft
- CARPET AREA - 107 smt / 1147 sft
- BUILDING - 04
- TOWER - 8, 9 (LEVEL 1- LEVEL 17)



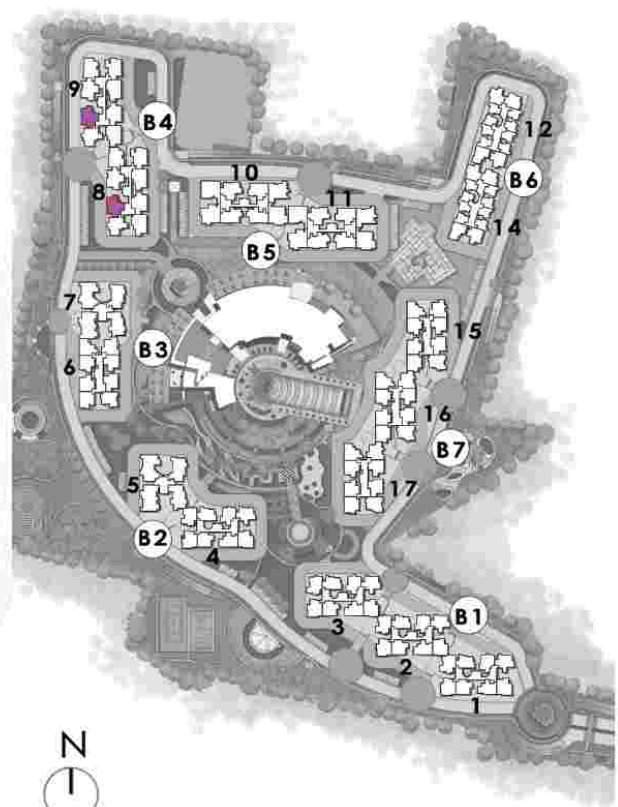



KEY PLAN

TYPE D7 (3.0 BED)

- SUPER BUILT UP AREA - 150 smt / 1614 sft
- CARPET AREA - 107 smt / 1156 sft
- BUILDING - 05
- TOWER - 10, 11 (LEVEL 1- LEVEL 17)





KEY PLAN



TYPE D8 (3.0 BED)

- SUPER BUILT UP AREA - 150 smt / 1618 sft
- CARPET AREA - 107 smt / 1160 sft
- BUILDING - 04
- TOWER - 8, 9 (LEVEL 1- LEVEL 17)





N
KEY PLAN

TYPE D9 (3.0 BED SMALL)

- SUPER BUILT UP AREA - 151 smt / 1622 sft
- CARPET AREA - 108 smt / 1167 sft
- BUILDING - 04
- TOWER - 8, 9
- TYPICAL FOR T-8 - (LEVEL 1- LEVEL 17)
- TYPICAL FOR T-9 - (LEVEL 3- LEVEL 17)





N
KEY PLAN



TYPE D10 (3.0 BED SMALL)

- SUPER BUILT UP AREA - 151 smt / 1624 sft
- CARPET AREA - 108 smt / 1162 sft
- BUILDING - 04
- TOWER - 8, 9
- TYPICAL FOR T-8 - (LEVEL 3- LEVEL 17)
- TYPICAL FOR T-9 - (LEVEL 1- LEVEL 17)





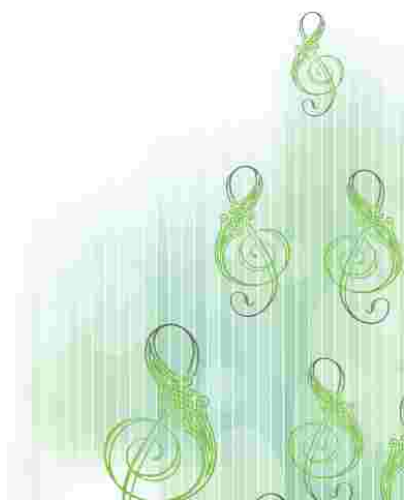
TYPE D11 (3.0 BED SMALL)

- SUPER BUILT UP AREA - 152 smt / 1631 sft
- CARPET AREA - 109 smt / 1168 sft
- BUILDING - 05
- TOWER - 10, 11 (LEVEL 1- LEVEL 17)





TYPE D12 (3.0 BED SMALL)
 SUPER BUILT UP AREA - 152 smt / 1634 sft
 CARPET AREA - 109 smt / 1170 sft
 BUILDING - 05
 TOWER - 10, 11 (LEVEL 1- LEVEL 17)






KEY PLAN

TYPE E1 (3.0 BED LARGE)

SUPER BUILT UP AREA - 177 smt / 1902 sft
 CARPET AREA - 124 smt / 1337 sft
 BUILDING - 05
 TOWER - 10, 11 (LEVEL 1- LEVEL 17)





TYPE E2 (3.0 BED LARGE)

- SUPER BUILT UP AREA - 177 smt / 1907 sft
- CARPET AREA - 124 smt / 1338 sft
- BUILDING - 05
- TOWER - 10, 11 (LEVEL 1- LEVEL 17)

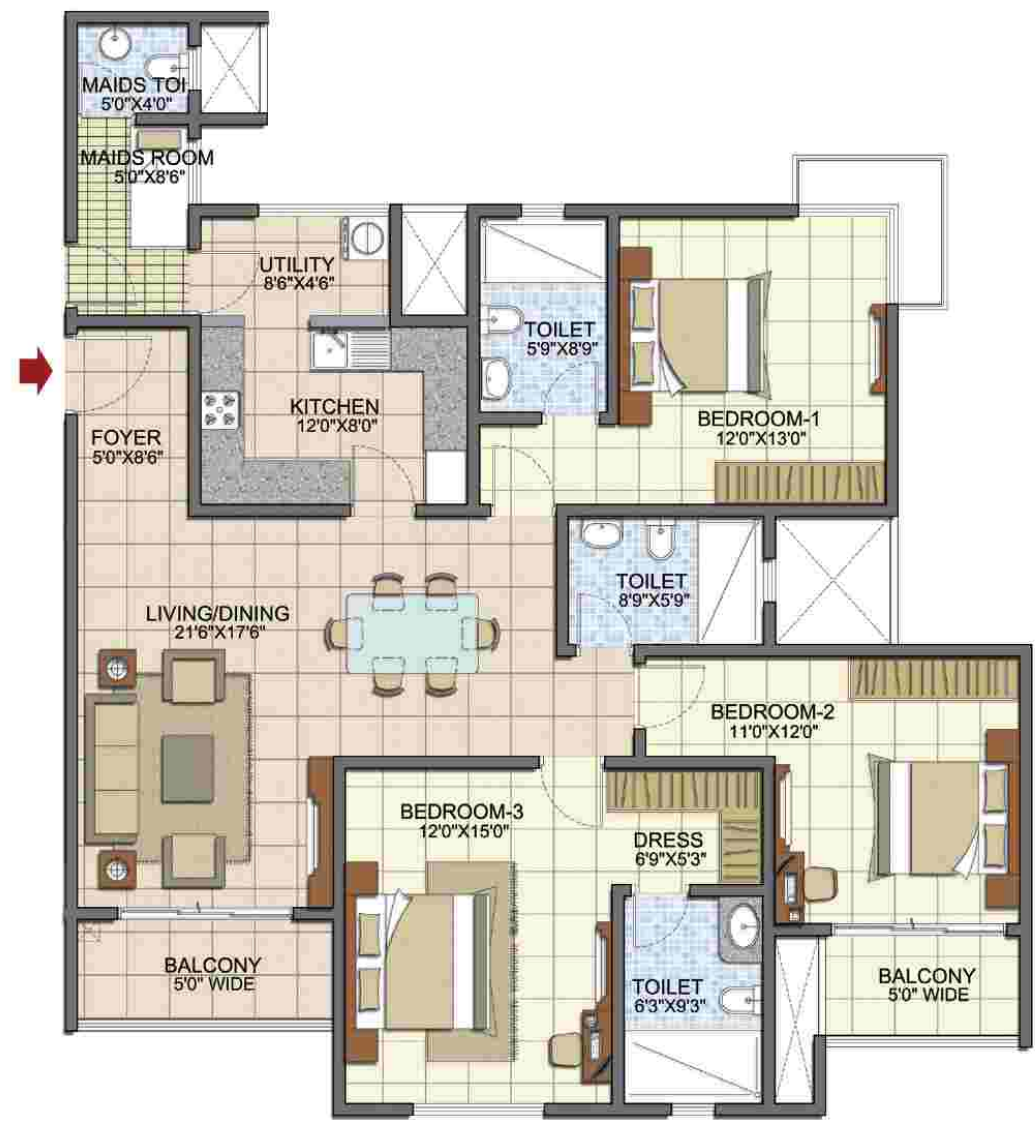


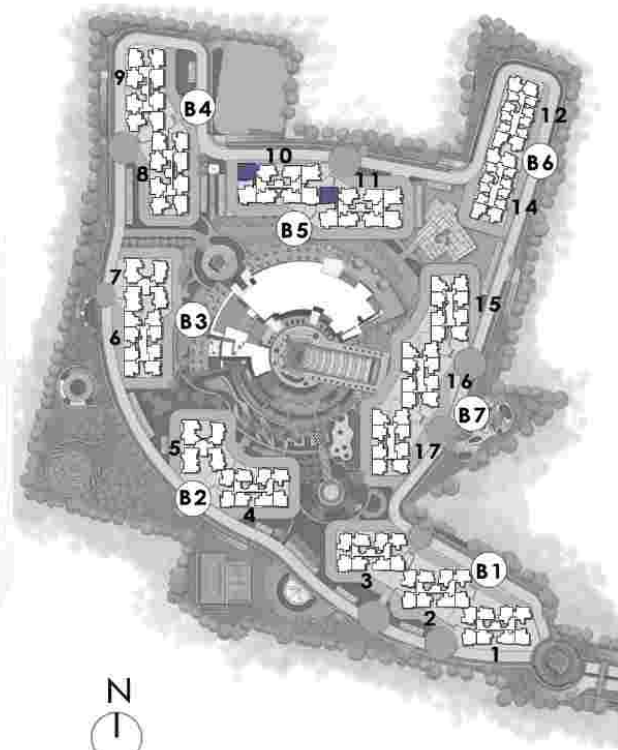


N
KEY PLAN

TYPE E3 (3.0 BED LARGE)

- SUPER BUILT UP AREA - 179 smt / 1922 sft
- CARPET AREA - 125 smt / 1349 sft
- BUILDING - 05
- TOWER - 10, 11
- TYPICAL FOR T-10 - (LEVEL 3- LEVEL 17)
- TYPICAL FOR T-11 - (LEVEL 1- LEVEL 17)





TYPE E4 (3.0 BED LARGE)

- SUPER BUILT UP AREA - 179 smt / 1927 sft
- CARPET AREA - 118 smt / 1274 sft
- BUILDING - 05
- TOWER - 10, 11
- TYPICAL FOR T-10 - (LEVEL 1- LEVEL 17)
- TYPICAL FOR T-11 - (LEVEL 3- LEVEL 17)





TYPE E5 (3.0 BED LARGE)

- SUPER BUILT UP AREA - 179 smt / 1929 sft
- CARPET AREA - 124 smt / 1333 sft
- BUILDING - 02, 03
- TOWER - 5, 7 (LEVEL 1- LEVEL 22)

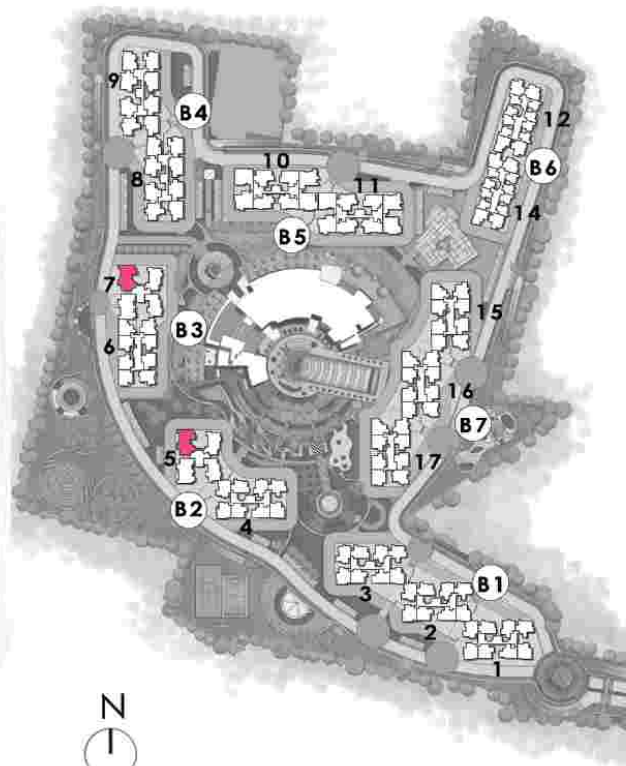




TYPE E6 (3.0 BED LARGE)

- SUPER BUILT UP AREA - 180 smt / 1933 sft
- CARPET AREA - 124 smt / 1339 sft
- BUILDING - 02, 03
- TOWER - 05 (LEVEL 3- LEVEL 22)
- TOWER - 07 (LEVEL 1- LEVEL 22)





TYPE F1 (4.0 BED)

- SUPER BUILT UP AREA - 229 smt / 2462 sft
- CARPET AREA - 163 smt / 1756 sft
- BUILDING - 02, 03
- TOWER - 05, 07
- TYPICAL FOR T-5 - (LEVEL 1- LEVEL 22)
- TYPICAL FOR T-7 - (LEVEL 1- LEVEL 22)





TYPE F2 (4.0 BED)

- SUPER BUILT UP AREA - 229 smt / 2467 sft
- CARPET AREA - 163 smt / 1757 sft
- BUILDING - 02, 03
- TOWER - 05, 07
- TYPICAL FOR T-5 - (LEVEL 1- LEVEL 22)
- TYPICAL FOR T-7 - (LEVEL 3- LEVEL 22)



Oracle Pvt Ltd
(kalyani Magnum
infotect Park)

Honeywell Solutions

Fortis Hospital

IIM Bangalore

BGS National
Public School

Royal Meenakshi Mall

Prestige
Notting Hill



PRESTIGE
SONG OF THE SOUTH
WHERE LIFE PLAYS OUT IN FULL COLOR
OFF BANNERGHATTA ROAD

Towards
Electronic City

Towards MG Road

Towards Bannerghatta Main Road

Begur Road

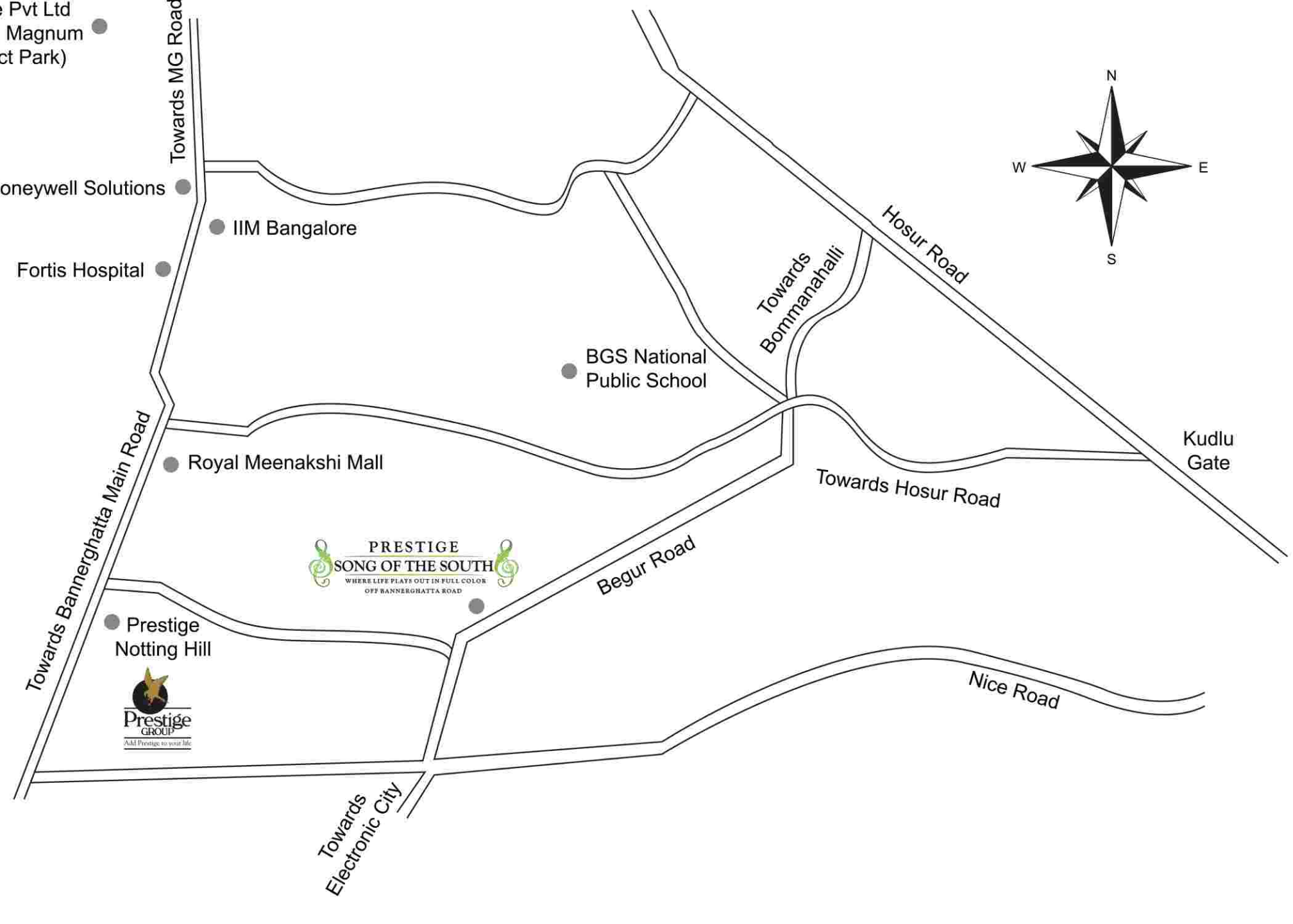
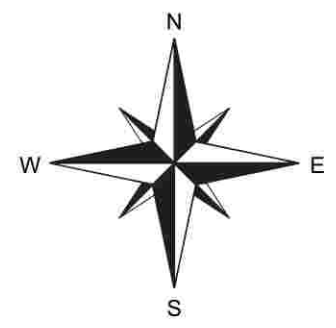
Towards
Bommanahalli

Hosur Road

Towards Hosur Road

Nice Road

Kudlu
Gate





Prestige Estates Projects Ltd.

The Falcon House, No.1, Main Guard Cross Road, Bengaluru-560 001,
Ph: 080 - 25591080, Fax: 080 - 25591945, E-mail: properties@vsnl.com www.prestigeconstructions.com.



Like us on Facebook • Follow Us on Twitter • Make sure you visit The Falcon Blog for the latest at Prestige.

New York Sales Center: Indehaus, www.indehaus.com

• Bengaluru • Chennai • Goa • Hyderabad • Kochi • Mangaluru • Mysuru

This brochure is conceptual and has been prepared based on the inputs provided by the Project Architect, this may vary during execution, the Promoter reserves the right to change, alter, add or delete any of the specifications mentioned herein based on site conditions and construction exigencies without prior permission or notice. The external color schemes and detailing of landscape may vary as may be suggested by the Architect considering the site conditions.

The furniture shown in the plans is only for the purpose of illustrating a possible layout and does not form a part of the offering or specifications. All Apartment interior views do not depict the standard wall, color & ceiling finishes which are not part of the offering.

Further, the dimensions mentioned do not consider the plastering thickness and there could be marginal variation in carpet areas.