

SITE PLAN



orchid
whitefield

apartments amidst greens

O R C H I D W H I T E F I E L D

1/2/2.5/3 BHK Apartments
Off Whitefield Main Road

RERA #. :PRM/KA/RERA/1251/446/PR/171201/000402
for further information www.rera.karnataka.gov.in



creating landmarks since 1971



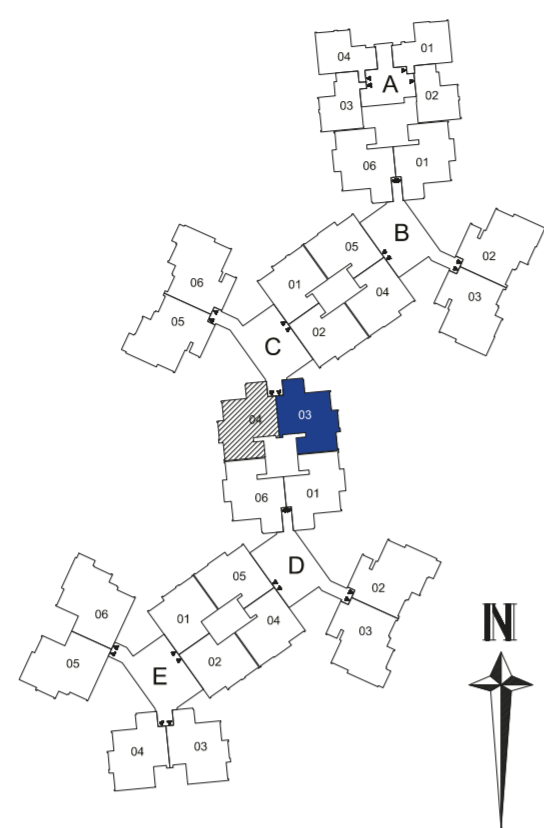
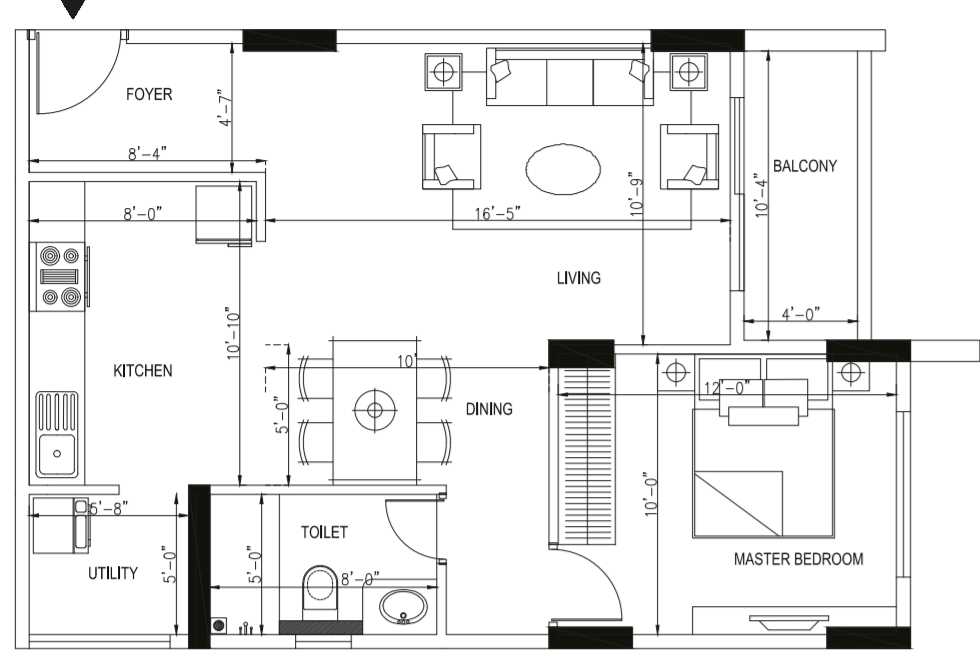
www.goyalco.com

+91 80888 33000

Disclaimer : Information in this brochure, about project are of very general nature. The pictures, layout themes, project landscape, interiors, lightings, etc. are shown as what is intended to be, at the time of completion and presently they are as illustrations and demonstration of the concept of the development. The furniture and fixtures, art effects, the kitchen ware and crockery and cutlery, and the light fittings are not being and only to give our esteemed customer the gauge and idea of how they could furnish the apartment in our project. You are required to verify all the details of the project, including area, amenities, services, terms of sales and payments and other relevant terms of the project independently with the company's sales team prior to concluding any decision for buying in Orchid Whitefield . The content of this brochure should not be treated as any kind of offer by the company.

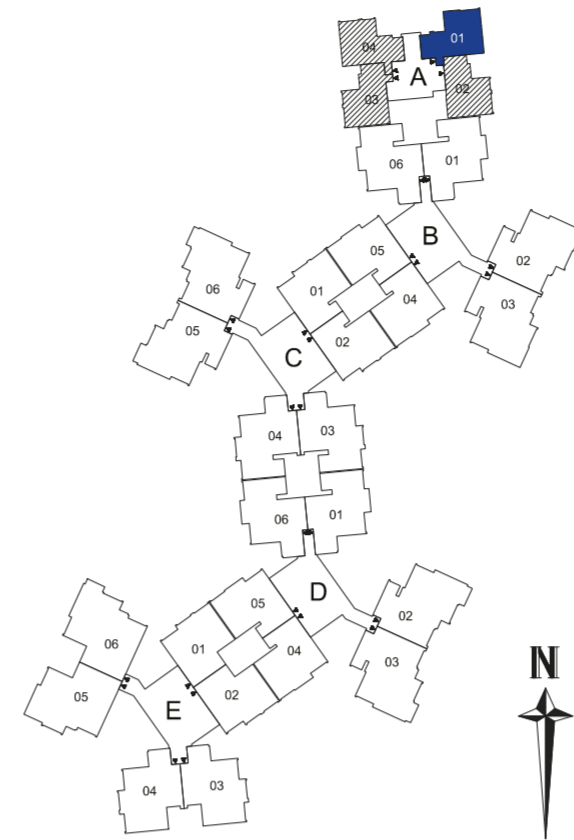
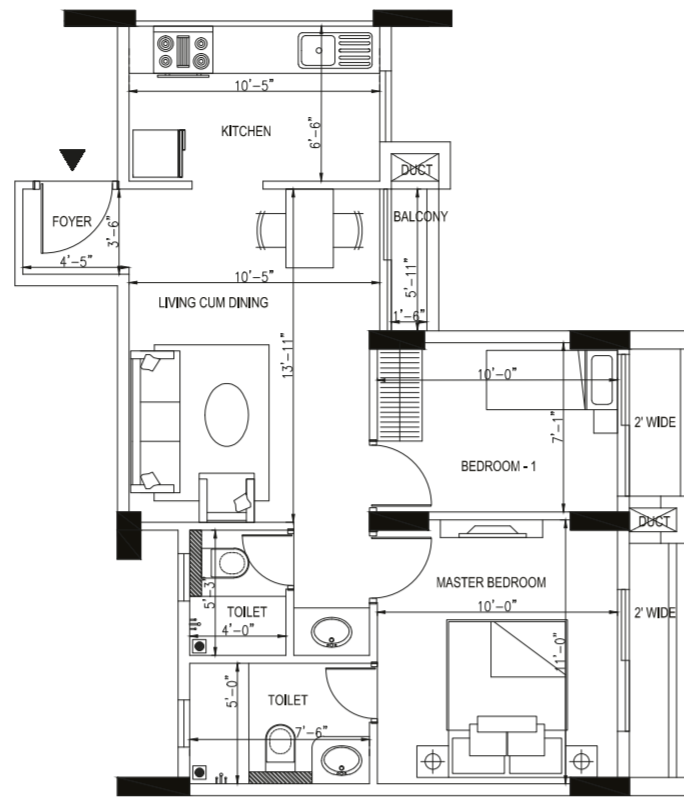
1 Sqmt = 10.764 Sqft

UNIT PLANS



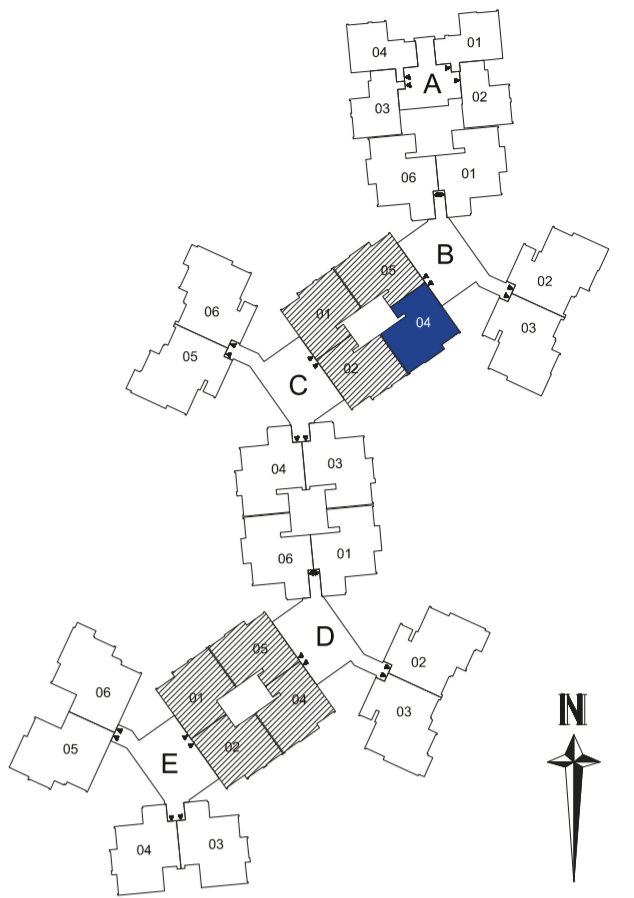
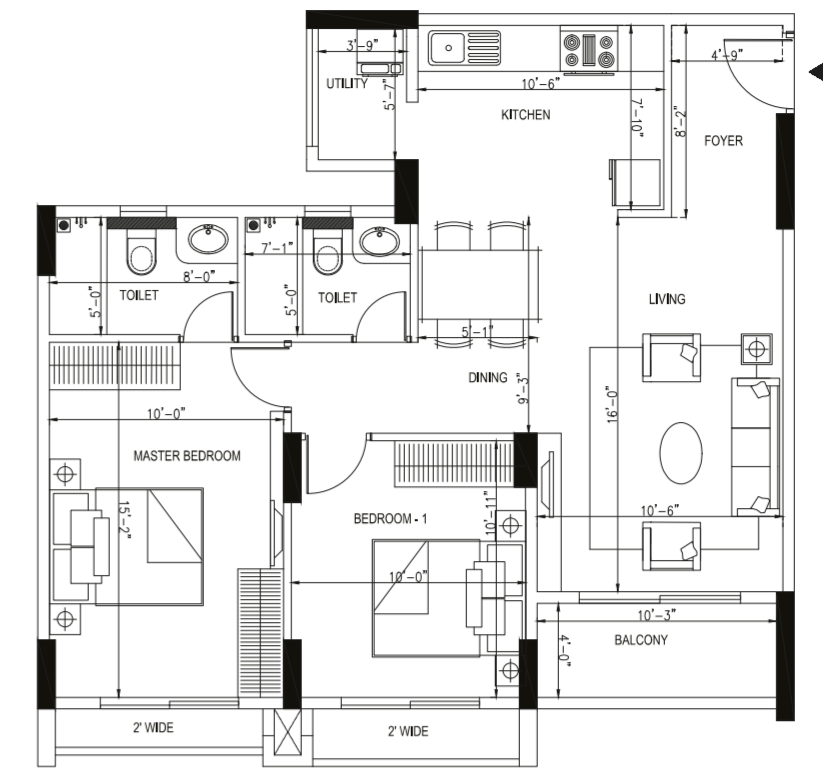
C - 003 & 004	Carpet Area	50.91 Sqmt	548 Sqft
	Balcony & Utility Area	6.47 Sqmt	70 Sqft
	Type : 1 BHK	Saleable Area : 894 Sqft	

NOTE : All measurements shown are on unfinished surfaces ; Numbers in Sqft are rounded off



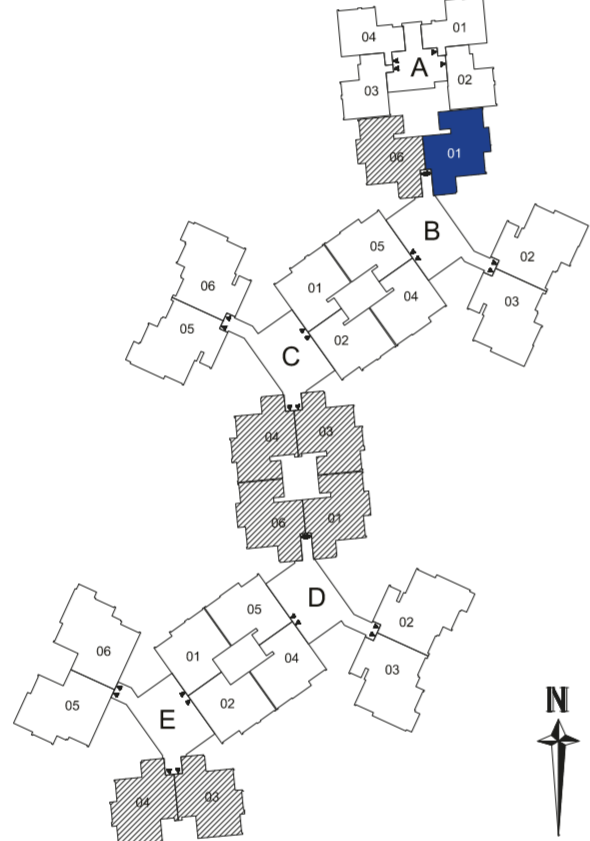
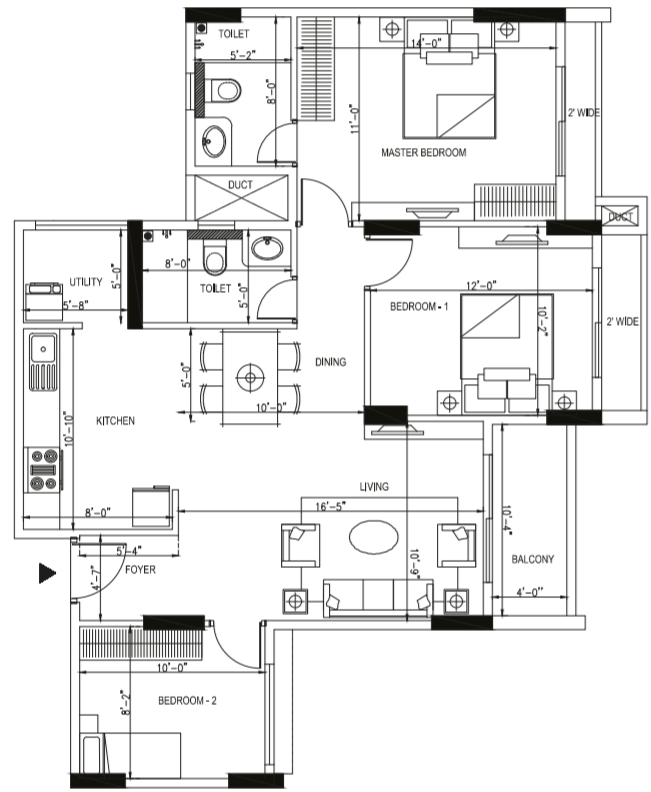
A -101-901, 102-902, 103-903 & 104-904	Carpet Area	44.84 Sqmt	483 Sqft
	Balcony & Utility Area	0.81 Sqmt	9 Sqft
	Type : 2 BHK Nano	Saleable Area : 750 Sqft	

NOTE : All measurements shown are on unfinished surfaces ; Numbers in Sqft are rounded off



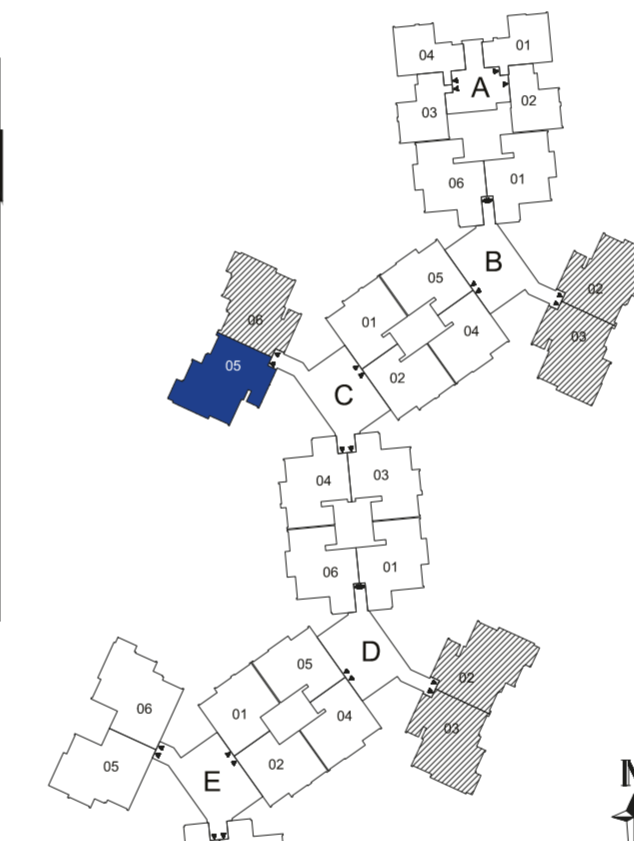
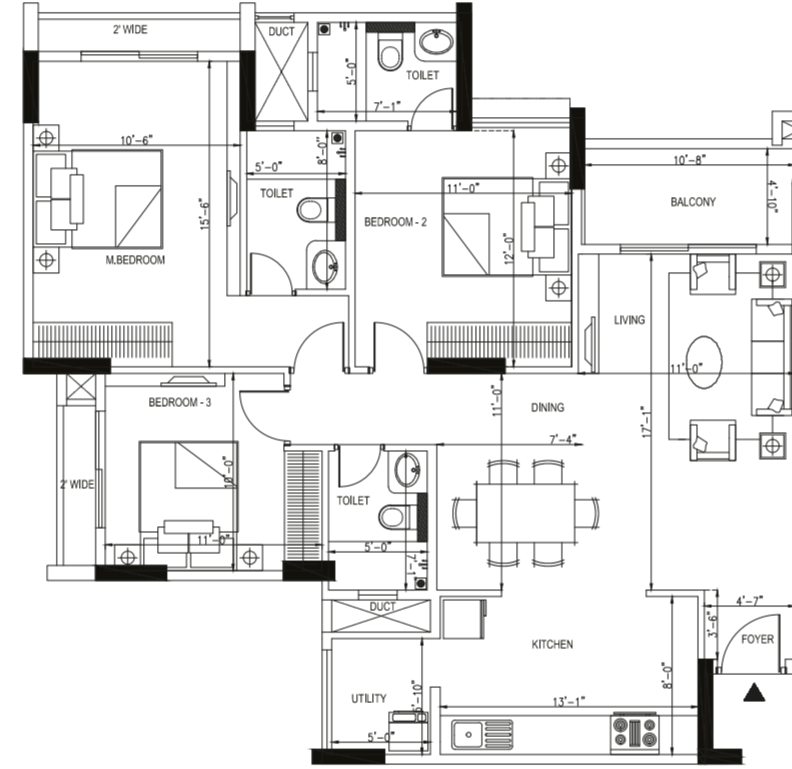
B-104-1804 & 105-1805 C-101-1801 & 102-1802 D-104-1804 & 105-1805 E-101-1801 & 102-1802	Carpet Area	66.95 Sqmt	721 Sqft
	Balcony & Utility Area	5.78 Sqmt	62 Sqft
	Type : 2 BHK	Saleable Area : 1173 Sqft	

NOTE : All measurements shown are on unfinished surfaces ; Numbers in Sqft are rounded off



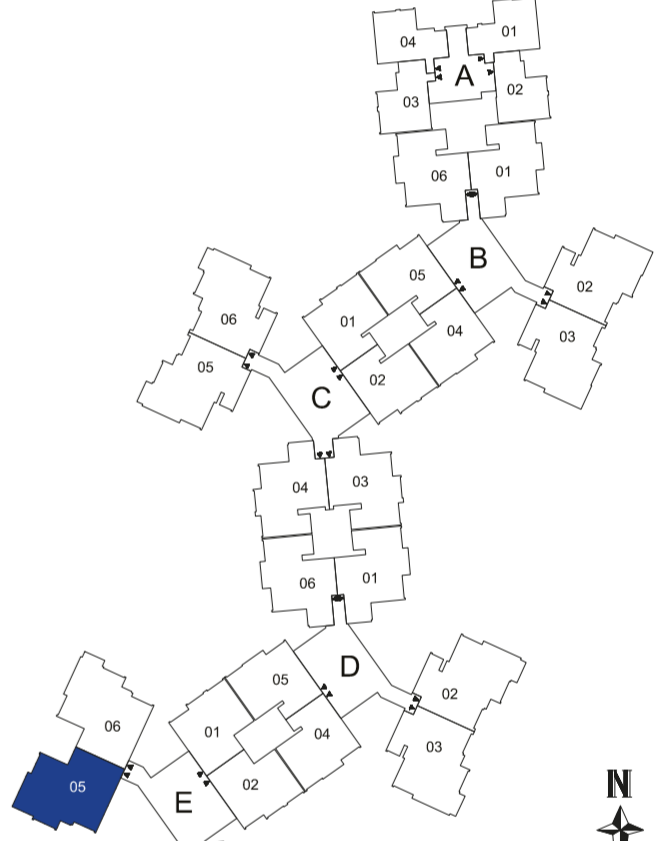
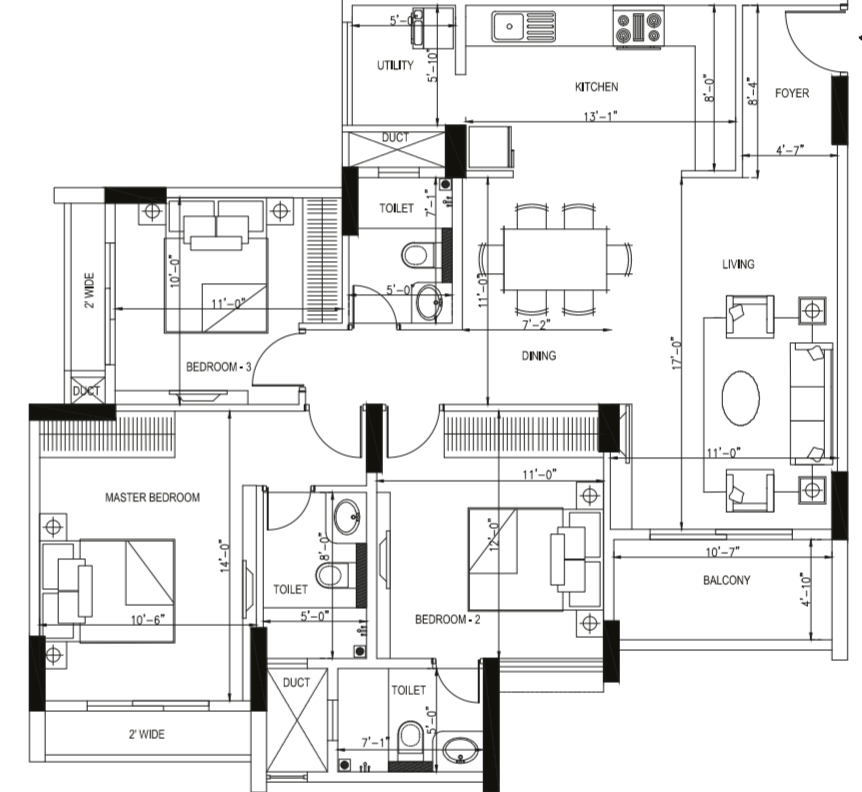
B-101-1801 & 106-1806 C-103-1803 & 104-1804 D-101-1801 & 106-1806 E-103-1803 & 104-1804	Carpet Area	76.41 Sqmt	822 Sqft
	Balcony & Utility Area	6.47 Sqmt	70 Sqft
	Type : 2.5 BHK	Saleable Area : 1350 Sqft	

NOTE : All measurements shown are on unfinished surfaces ; Numbers in Sqft are rounded off



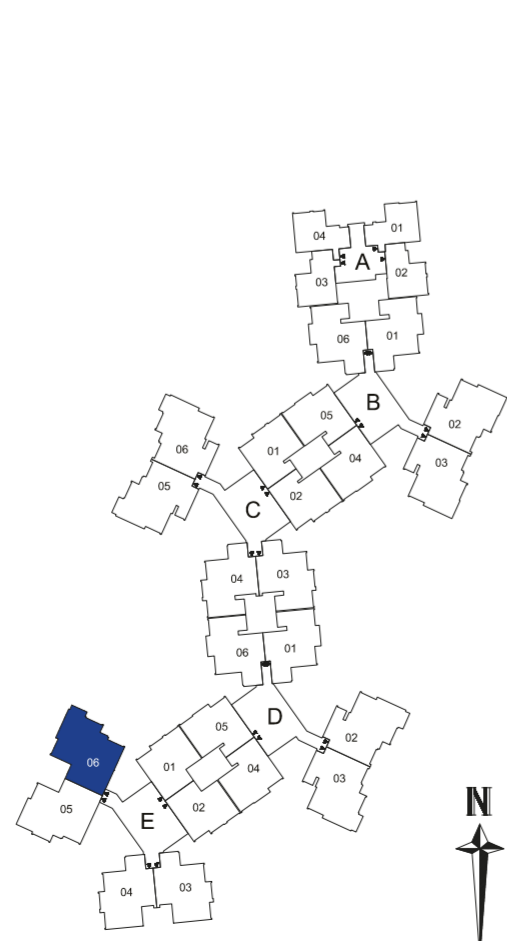
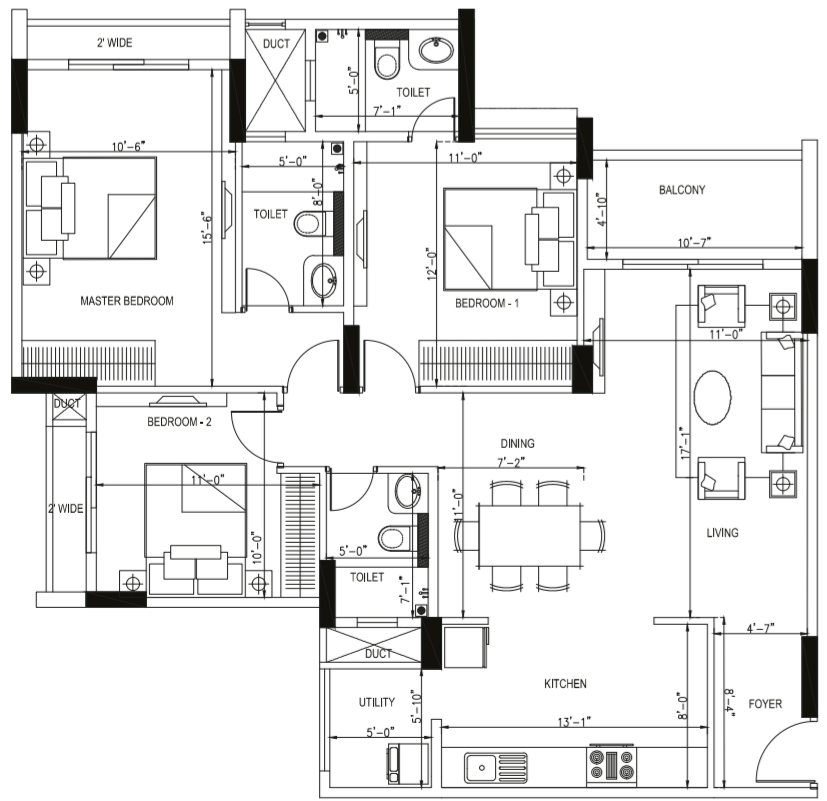
B-102-1802 & 103-1803 C-205, 305, 505, 605, 805, 905, 1105, 1205, 1405, 1505, 1705, 1805 C-206, 306, 506, 606, 806, 906, 1106, 1206, 1406, 1506, 1706, 1806 D-202, 302, 502, 602, 802, 902, 1102, 1202, 1402, 1502, 1702, 1802 D-203, 303, 503, 603, 803, 903, 1103, 1203, 1403, 1503, 1703, 1803	Carpet Area	90.85 Sqmt	978 Sqft
	Balcony & Utility Area	7.5 Sqmt	81 Sqft
	Type : 3 BHK	Saleable Area : 1564 Sqft	

NOTE : All measurements shown are on unfinished surfaces ; Numbers in Sqft are rounded off



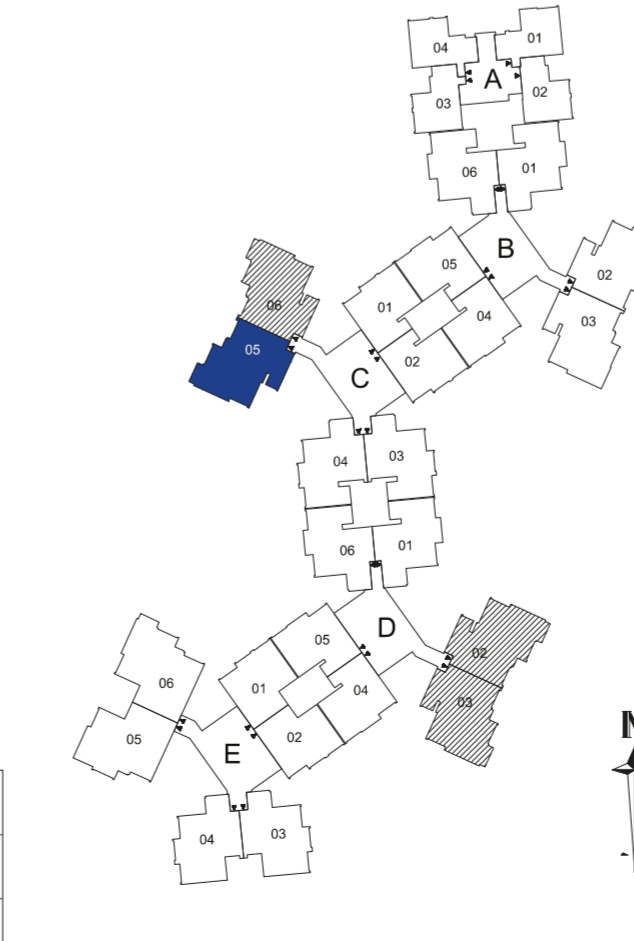
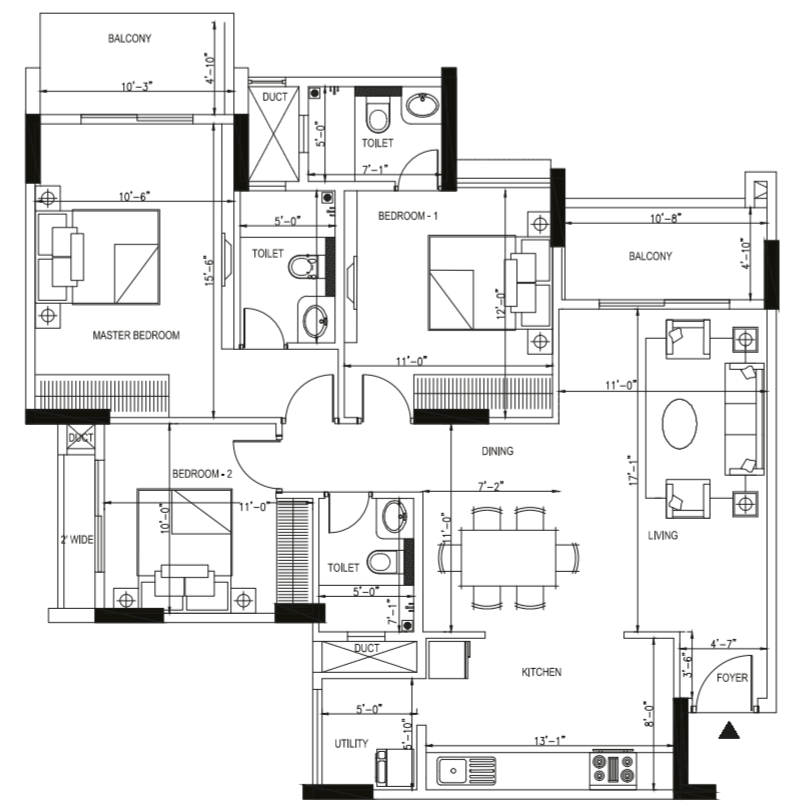
E - 105-1805	Carpet Area	91.52 Sqmt	985 Sqft
	Balcony & Utility Area	7.45 Sqmt	80 Sqft
	Type : 3 BHK	Saleable Area : 1574 Sqft	

NOTE : All measurements shown are on unfinished surfaces ; Numbers in Sqft are rounded off



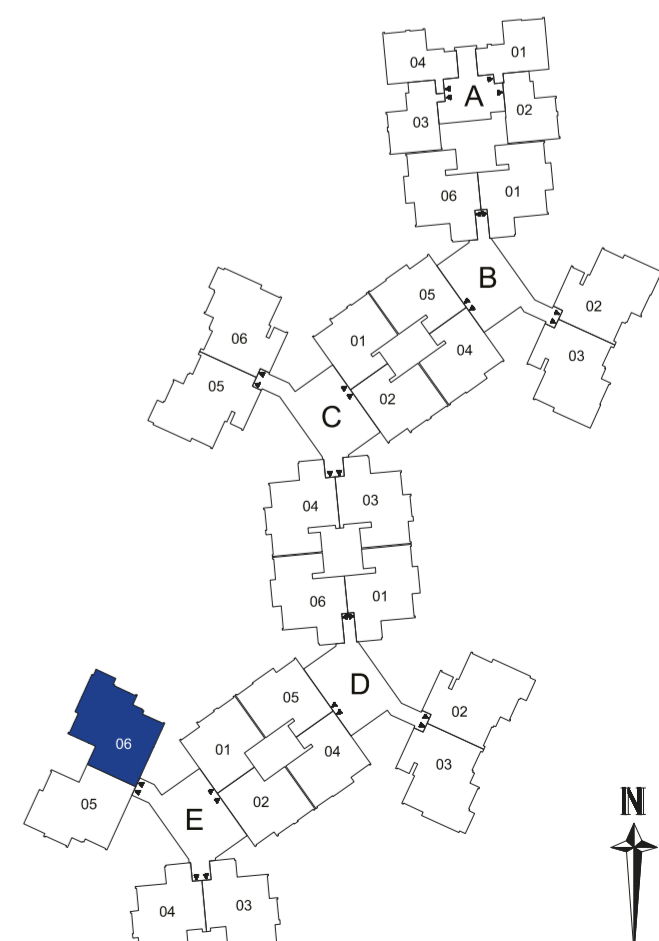
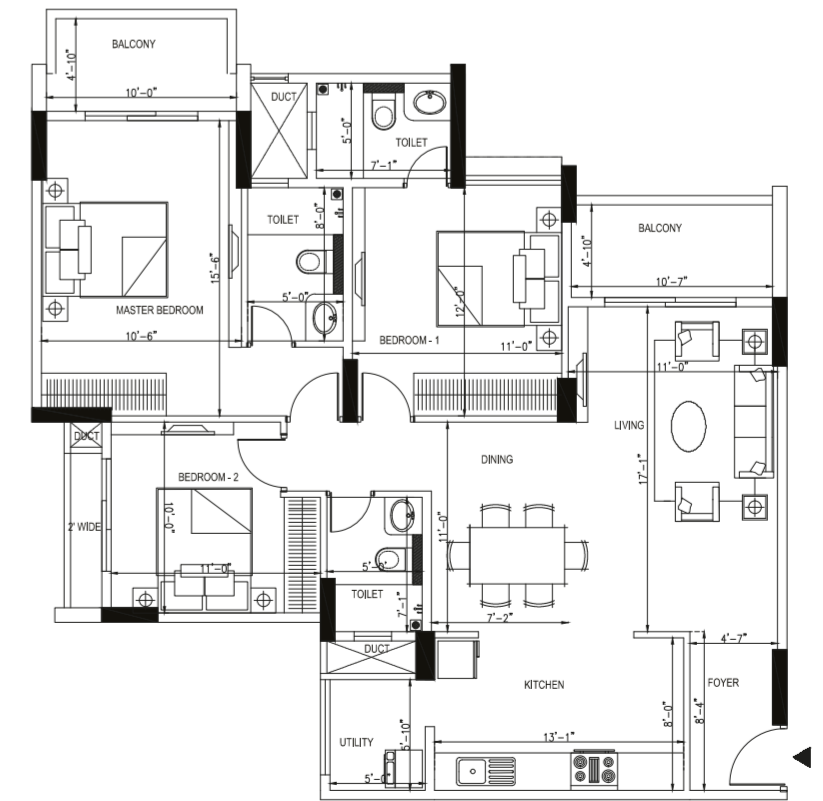
E - 206, 406, 706, 1006, 1306, 1606, 1206, 1406, 1506, 1706, 1806	Carpet Area	92.93 Sqmt	1000 Sqft
	Balcony & Utility Area	7.45 Sqmt	80 Sqft
	Type : 3 BHK	Saleable Area : 1596 Sqft	

NOTE : All measurements shown are on unfinished surfaces ; Numbers in Sqft are rounded off



C-105, 405, 705, 1005, 1305, 1605 C-106, 406, 706, 1006, 1306, 1606 D-102, 402, 702, 1002, 1302, 1602 D-103, 403, 703, 1003, 1303, 1603	Carpet Area	90.85 Sqmt	978 Sqft
	Balcony & Utility Area	11.88 Sqmt	128 Sqft
	Type : 3 BHK	Saleable Area : 1610 Sqft	

NOTE : All measurements shown are on unfinished surfaces ; Numbers in Sqft are rounded off



E-106, 406, 706, 1006, 1306, 1606	Carpet Area	92.93 Sqmt	1000 Sqft
	Balcony & Utility Area	11.68 Sqmt	126 Sqft
	Type : 3 BHK	Saleable Area : 1639 Sqft	

NOTE : All measurements shown are on unfinished surfaces ; Numbers in Sqft are rounded off

SPECIFICATIONS

WALL FINISHING

- Internal Walls and Ceiling finished with Oil Bound Distemper
- External Walls painted with weather coat /weather shield paints

FLOORING

- Vitrified Tiles for Living/Dining/Kitchen/Bedrooms.
- Ceramic tiles for balconies and utility areas
- Lobbies with rustic/ vitrified tiles
- Staircases with granite.

DOORS & WINDOWS

- Main doors with teak wood frames and teak finish flush doors.
- Other doors with sal wood frames with moulded skin panel doors.
- Powder coated Aluminium windows

KITCHEN

- Granite counter with single drain board sink
- Cladding with ceramic tiles 2ft above the kitchen platform

TOILETS

- Ceramic Tiles dado upto 7ft height
- Grid False Ceiling
- Counter Basin / Wall hung basin.
- C P fittings of Jaquar or equivalent
- EWC and Ceramic basins of Cera or equivalent in all toilets.

ELECTRICAL

- 1 BHK/2 BHK NANO:3 KW KPTCL supply & 0.75 KW DG back up
- 2 BHK : 4 KW KPTCL supply & .75 KW DG back up
- 3 BHK : 5 KW KPTCL supply & 1 KW DG back up
- 100% DG back up for pumps, lifts and common area

WATER SUPPLY

- CPVC line for water supply
- UPVC / PVC lines for soil, drainage and external lines
- Sewage Treatment Plant
- Rain water harvesting system

LIFTS

- One 8 Passengers Lift & Second 13 Passenger Lift.

LOCATION MAP



AMENITIES

- Arrival Court Yard
- Seating areas
- Multi use Lawn
- Basement Entry
- Basement Exit
- Wing Entrance
- Wing Exit
- Transformer Yard
- Adults Swimming pool
- Kids Pool
- Club House with mini party hall
- Club House with activity lawn
- Kids play area
- Cricket practice pitch
- Multipurpose Court
- Basketball practice court
- Outdoor gym
- Organic Converter
- Working pods
- Jogging track