

# GROUND FLOOR PLAN TOWER - A, B & C

GRAND CENTRAL BOULEVARD FACING



### Area Statement Tower A

Unit Series	Type	RERA Carpet Area	Usable Area	Super Built Up Area
Ground 001	3B+3T	1,159	1,245	1,691
Ground 002	3B+2T	1,023	1,114	1,510
Ground 003	3B+2T	1,023	1,114	1,511
Ground 004	2B+2T	805	893	1,202
Ground 006	3B+2T	1,023	1,114	1,511
Ground 007	2B+2T+Study	892	984	1,336
Ground 008	3B+3T	1,159	1,245	1,691

All areas are in sq.ft.

### Area Statement Tower B

Unit Series	Type	RERA Carpet Area	Usable Area	Super Built Up Area
Ground 001	3B+3T	1,159	1,245	1,691
**Ground 002	2B+2T+Study	892	984	1,336
Ground 003	3B+2T	1,023	1,114	1,510
Ground 004	2B+2T	805	893	1,202
Ground 006	3B+2T	1,023	1,114	1,511
**Ground 007	2B+2T+Study	892	984	1,336
Ground 008	3B+3T	1,159	1,245	1,691

### Area Statement Tower C

Unit Series	Type	RERA Carpet Area	Usable Area	Super Built Up Area
Ground 001	3B+3T	1,159	1,245	1,691
**Ground 002	2B+2T+Study	892	984	1,336
Ground 003	3B+2T	1,023	1,114	1,510
Ground 005	2B+2T	805	893	1,202
Ground 006	3B+2T	1,023	1,114	1,512
**Ground 007	3B+2T	1,023	1,114	1,510
Ground 008	3B+3T	1,159	1,245	1,691

\*\* The units may differ from tower to tower



# TYPICAL FLOOR PLAN - 1st to 18th TOWER - A, B & C

GRAND CENTRAL BOULEVARD FACING



⑤ Type : 2B+2T  
A- 105 to A- 1805  
B- 105 to B- 1805  
C- 105 to C- 1805

④ Type : 2B+2T  
A- 104 to A- 1804  
B- 104 to B- 1804  
C- 104 to C- 1804

③ Type : 3B+2T  
A- 103 to A- 1803  
B- 103 to B- 1803  
C- 103 to C- 1803

⑥ Type : 3B+2T  
A- 106 to A- 1806  
B- 106 to B- 1806  
C- 106 to C- 1806

⑦ Type : 3B+2T  
A- 107 to A- 1807  
B- 107 to B- 1807  
C- 107 to C- 1807

⑧ Type : 3B+3T  
A- 108 to A- 1808  
B- 108 to B- 1808  
C- 108 to C- 1808

① Type : 3B+3T  
A- 101 to A- 1801  
B- 101 to B- 1801  
C- 101 to C- 1801

② Type : 3B+2T  
A- 102 to A- 1802  
B- 102 to B- 1802  
C- 102 to C- 1802

### Area Statement Tower A

Unit Series	Type	RERA Carpet Area	Usable Area	Super Built Up Area
101-1801	3B+3T	1,159	1,245	1,691
102-1802	3B+2T	1,023	1,114	1,510
103-1803	3B+2T	1,023	1,114	1,511
104-1804	2B+2T	805	893	1,195
105-1805	2B+2T	805	893	1,195
106-1806	3B+2T	1,023	1,114	1,511
107-1807	3B+2T	1,023	1,114	1,508
108-1808	3B+3T	1,159	1,245	1,691

### Area Statement Tower B

Unit Series	Type	RERA Carpet Area	Usable Area	Super Built Up Area
101-1801	3B+3T	1,159	1,245	1,691
102-1802	3B+2T	1,023	1,114	1,508
103-1803	3B+2T	1,023	1,114	1,510
104-1804	2B+2T	805	893	1,195
105-1805	2B+2T	805	893	1,195
106-1806	3B+2T	1,023	1,114	1,511
107-1807	3B+2T	1,023	1,114	1,508
108-1808	3B+3T	1,159	1,245	1,691

### Area Statement Tower C

Unit Series	Type	RERA Carpet Area	Usable Area	Super Built Up Area
101-1801	3B+3T	1,159	1,245	1,691
102-1802	3B+2T	1,023	1,114	1,508
103-1803	3B+2T	1,023	1,114	1,510
104-1804	2B+2T	805	893	1,195
105-1805	2B+2T	805	893	1,195
106-1806	3B+2T	1,023	1,114	1,512
107-1807	3B+2T	1,023	1,114	1,510
108-1808	3B+3T	1,159	1,245	1,691

All areas are in sq.ft.



# 19th FLOOR PLAN TOWER - A, B & C

GRAND CENTRAL BOULEVARD FACING



Area Statement Tower A

Unit Series	Type	RERA Carpet Area	Usable Area	Super Built Up Area
1901	3B+3T	1,159	1,292	1,689
1902	3B+2T	1,023	1,163	1,510
1903	3B+2T	1,023	1,165	1,511
1904	2B+2T	805	950	1,195
1905	2B+2T	805	950	1,195
1906	3B+2T	1,023	1,165	1,508
1907	3B+2T	1,023	1,163	1,508
1908	3B+3T	1,159	1,292	1,689

Area Statement Tower B

Unit Series	Type	RERA Carpet Area	Usable Area	Super Built Up Area
1901	3B+3T	1,159	1,292	1,689
1902	3B+2T	1,023	1,163	1,508
1903	3B+2T	1,023	1,165	1,510
1904	2B+2T	805	950	1,195
1905	2B+2T	805	950	1,195
1906	3B+2T	1,023	1,165	1,511
1907	3B+2T	1,023	1,163	1,508
1908	3B+3T	1,159	1,292	1,689

Area Statement Tower C

Unit Series	Type	RERA Carpet Area	Usable Area	Super Built Up Area
1901	3B+3T	1,159	1,292	1,689
1902	3B+2T	1,023	1,163	1,508
1903	3B+2T	1,023	1,165	1,510
1904	2B+2T	805	950	1,195
1905	2B+2T	805	950	1,195
1906	3B+2T	1,023	1,165	1,512
1907	3B+2T	1,023	1,163	1,510
1908	3B+3T	1,159	1,292	1,689

All areas are in sq.ft.



# GROUND FLOOR PLAN TOWER - D

CITY VIEW



GRAND CENTRAL BOULEVARD FACING

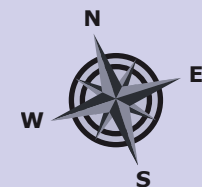
Master Plan



Area Statement Tower D

Unit Series	Type	RERA Carpet Area	Usable Area	Super Built Up Area
Ground 001	2B+2T	797	890	1,223
Ground 002	3B+3T	1,235	1,317	1,766
Ground 003	3B+3T	1,235	1,317	1,766
Ground 004	2B+2T	805	894	1,202
Ground 006	3B+3T	1,235	1,317	1,765
Ground 007	3B+3T	1,235	1,317	1,765
Ground 008	2B+2T	797	890	1,223

All areas are in sq.ft.





# TYPICAL FLOOR PLAN - 1st to 18th TOWER - D

CITY VIEW



GRAND CENTRAL BOULEVARD FACING

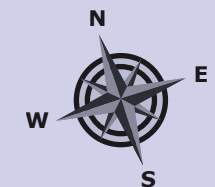
Master Plan



Area Statement Tower D

Unit Series	Type	RERA Carpet Area	Usable Area	Super Built Up Area
101-1801	2B+2T	797	890	1,223
102-1802	3B+3T	1,235	1,317	1,766
103-1803	3B+3T	1,235	1,317	1,766
104-1804	2B+2T	805	894	1,194
105-1805	2B+2T	805	894	1,194
106-1806	3B+3T	1,235	1,317	1,765
107-1807	3B+3T	1,235	1,317	1,765
108-1808	2B+2T	797	890	1,223

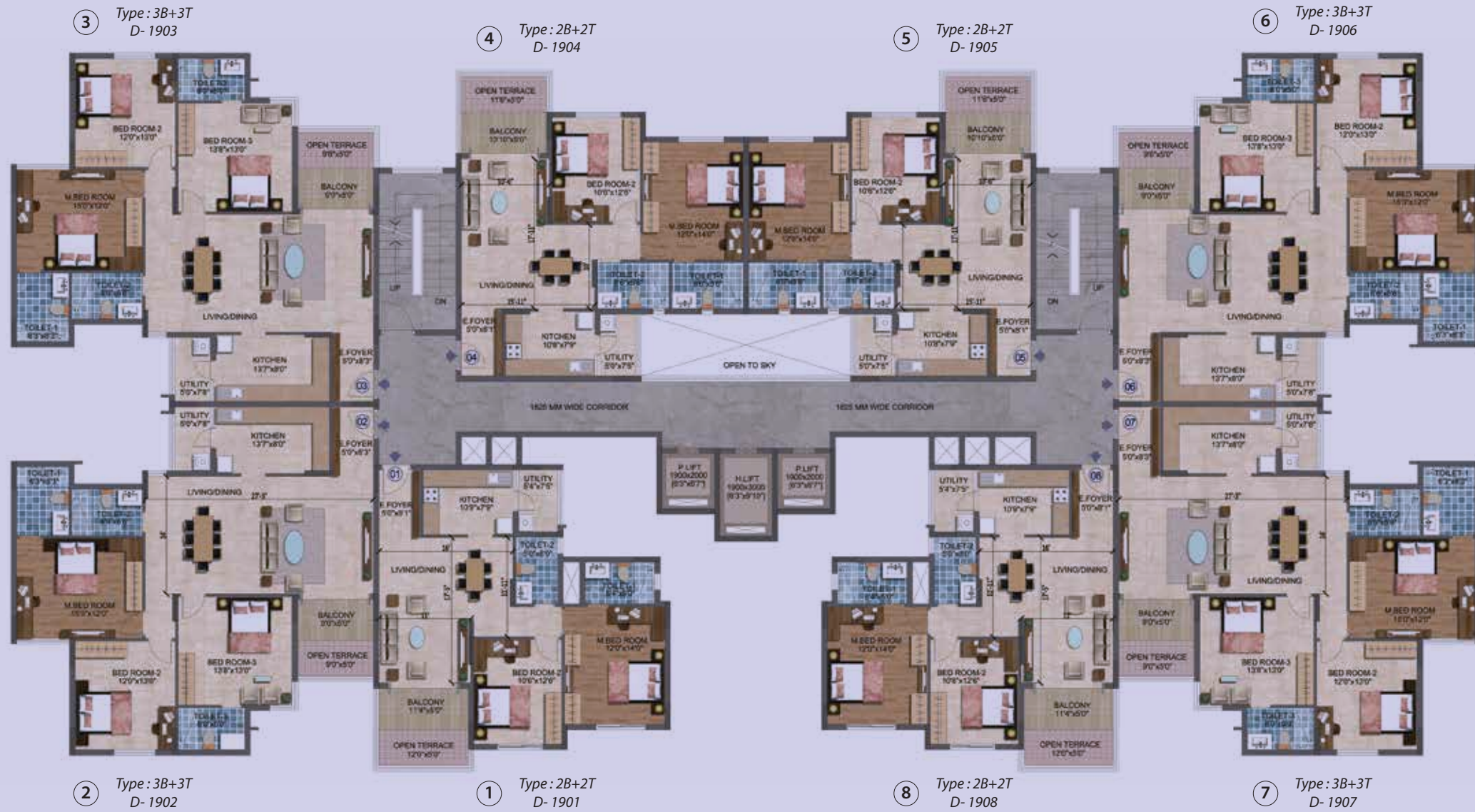
All areas are in sq.ft.





# 19th FLOOR PLAN TOWER - D

CITY VIEW



GRAND CENTRAL BOULEVARD FACING

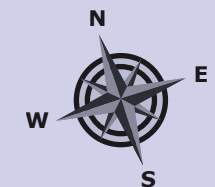
Master Plan



Area Statement Tower D

Unit Series	Type	RERA Carpet Area	Usable Area	Super Built Up Area
1901	2B+2T	797	947	1,221
1902	3B+3T	1,235	1,361	1,766
1903	3B+3T	1,235	1,364	1,766
1904	2B+2T	805	951	1,194
1905	2B+2T	805	951	1,194
1906	3B+3T	1,235	1,364	1,765
1907	3B+3T	1,235	1,360	1,765
1908	2B+2T	797	947	1,223

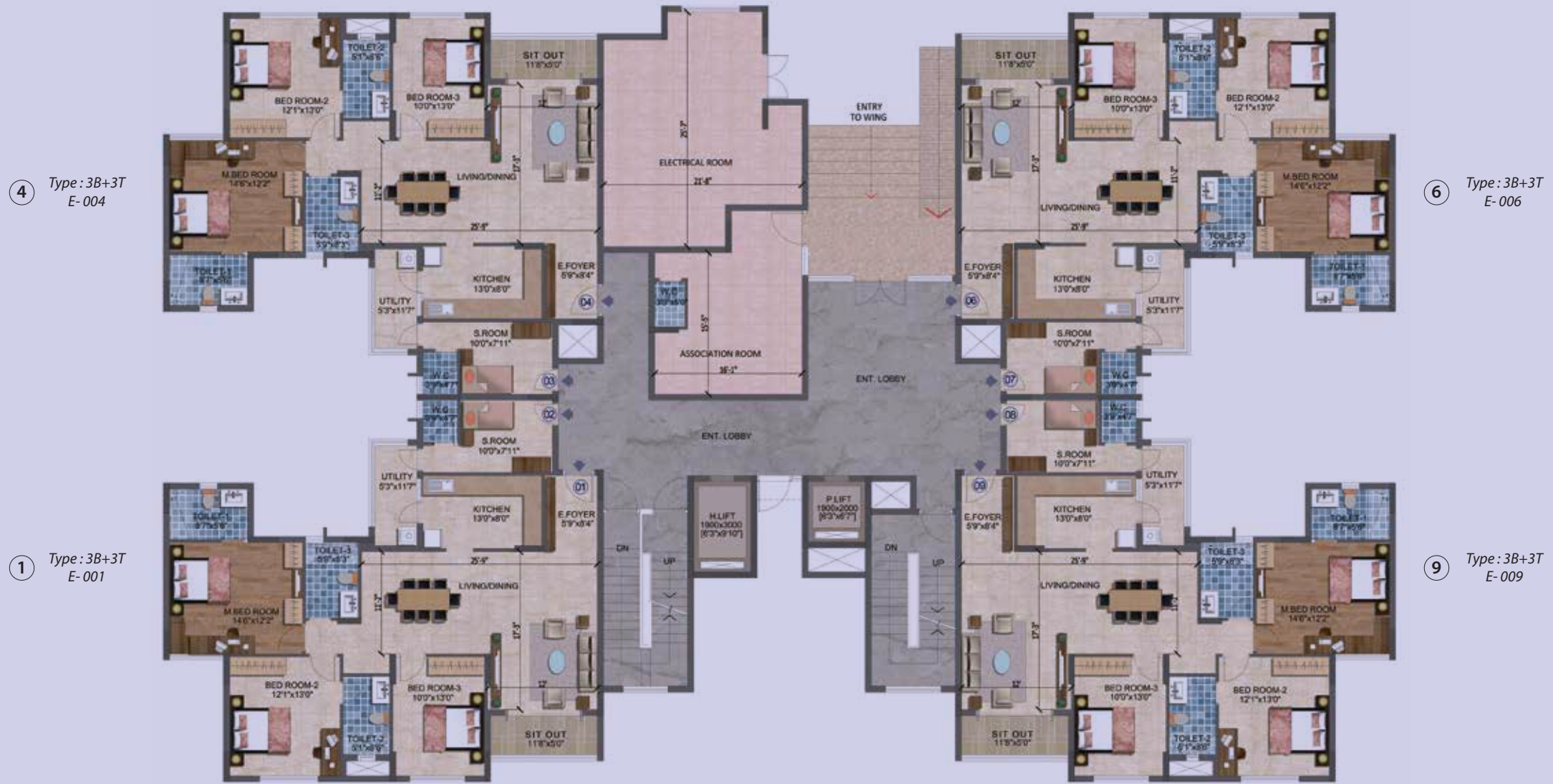
All areas are in sq.ft.





# GROUND FLOOR PLAN TOWER - E

CITY VIEW



GRAND CENTRAL BOULEVARD FACING

Master Plan

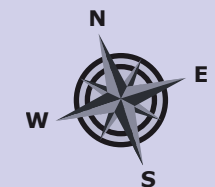


Area Statement Tower E

Unit Series	Type	RERA Carpet Area	Usable Area	Super Built Up Area
Ground 001	3B+3T+SR	1,291	1,408	1,901
Ground 004	3B+3T+SR	1,291	1,408	1,902
Ground 006	3B+3T+SR	1,291	1,408	1,919
Ground 009	3B+3T+SR	1,291	1,408	1,903

Each 3B + 3T + SR is a combination of a unit comprising of Servant's Room (SR) and the apartment itself.

All areas are in sq.ft.



# TYPICAL FLOOR PLAN - 1st to 18th TOWER - E

CITY VIEW



GRAND CENTRAL BOULEVARD FACING

Master Plan

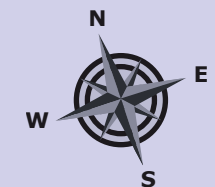


Area Statement Tower E

Unit Series	Type	RERA Carpet Area	Usable Area	Super Built Up Area
101-1801	3B+3T+SR	1,291	1,408	1,901
104-1804	3B+3T+SR	1,291	1,408	1,906
105-1805	3B+2T	972	1,057	1,427
106-1806	3B+3T+SR	1,291	1,408	1,903
109-1809	3B+3T+SR	1,291	1,408	1,903

Each 3B + 3T + SR is a combination of a unit comprising of Servant's Room (SR) and the apartment itself.

All areas are in sq.ft.





# 19th FLOOR PLAN TOWER - E

CITY VIEW



GRAND CENTRAL BOULEVARD FACING

Master Plan

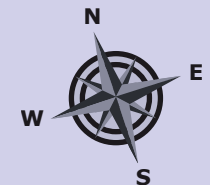


Area Statement Tower E

Unit Series	Type	RERA Carpet Area	Usable Area	Super Built Up Area
1901	3B+3T+SR	1,291	1,471	1,901
1904	3B+3T+SR	1,291	1,471	1,907
1905	3B + 2T	972	1,105	1,427
1906	3B+3T+SR	1,291	1,471	1,903
1909	3B+3T+SR	1,291	1,471	1,903

Each 3B + 3T + SR is a combination of a unit comprising of Servant's Room (SR) and the apartment itself.

All areas are in sq.ft.





# TYPICAL UNIT PLANS



2B + 2T



2B + 2T



2B + 2T + Study



# TYPICAL UNIT PLANS



3B + 2T



3B + 2T



# TYPICAL UNIT PLANS



3B + 3T



3B + 3T



# TYPICAL UNIT PLANS



Servant's Room



3B + 3T + SR



3B + 3T

Each 3B + 3T + SR is a combination of a unit comprising of Servant's Room (SR) and the apartment itself.



# TYPICAL UNIT PLANS



Servant's Room  
SBA : 155 / 157 sq. ft.



3B + 3T



3B + 3T + SR

Each 3 bedroom luxe is a combination of 2 units comprising of servant's room (SR) and the apartment itself.