

1 BHK  
APARTMENT

SBA – 661.18 sq ft  
61.43 sq mts



This unit is the perfect sized apartment for a single working individual or a small family. There is a large lounging space in the living area with a contemporary kitchen-n-dining and a separate master-bed area that comes with an attached bathroom.

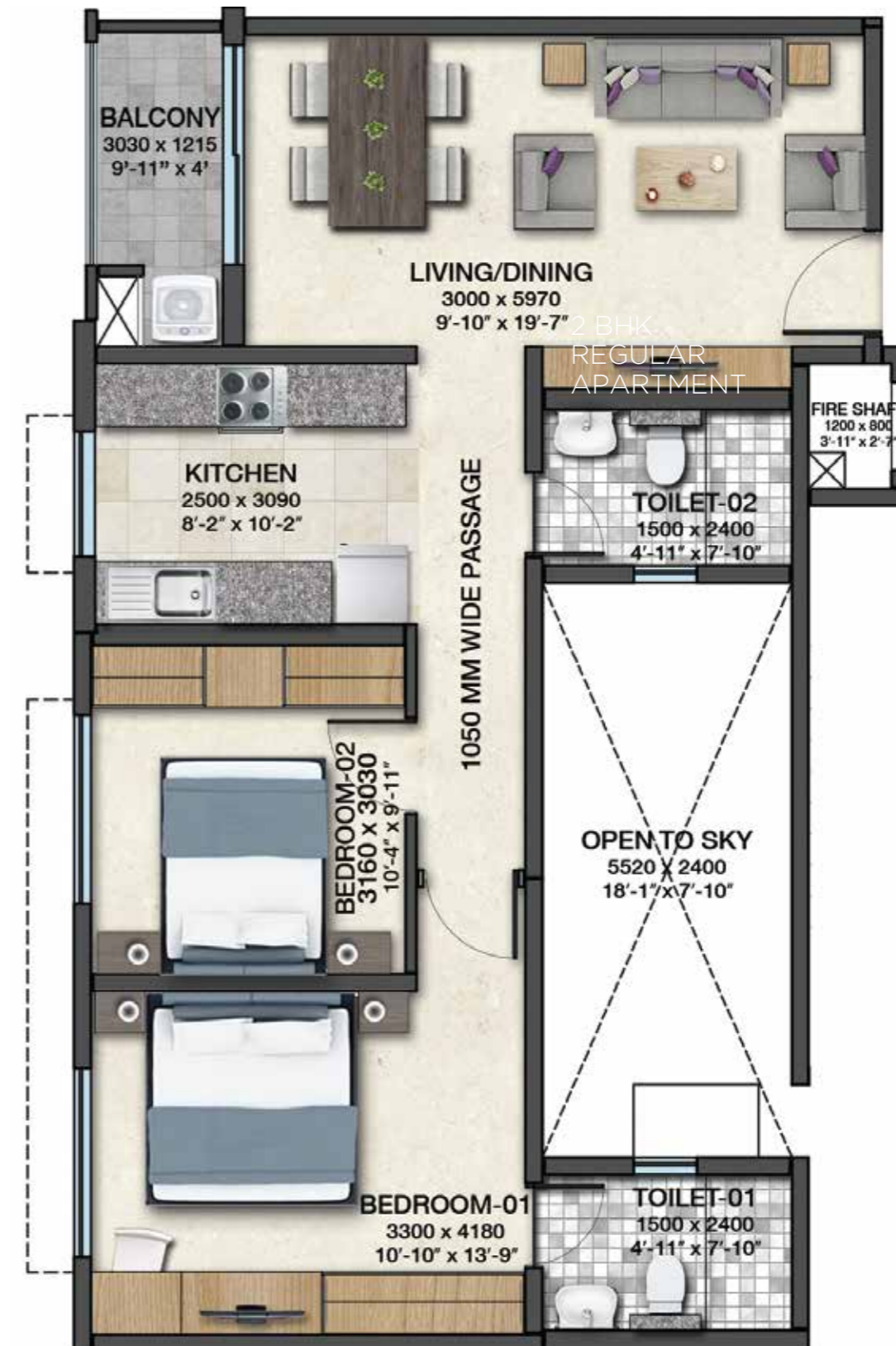
- Large living room with a full sized TV unit area
- A lavish parallel kitchen with a dining area built in
- A separate balcony and washing machine space
- Full sized master bedroom with an attached bathroom
- Adequate lighting and ventilation throughout the apartment
- Adequate circulation space all through the apartment

2 BHK  
REGULAR  
APARTMENT

SBA – 1012.08 sq ft  
94.02 sq mts

This unit is optimally sized for the modern nuclear family, keeping in mind the spatial needs of the rooms and ensuring perfect balance without going overboard. This apartment comes with a large kitchen, 2 full sized bedrooms, 2 bathrooms and a large living & dining area which overlooks the balcony.

- Large living room with a 11 ft. TV viewing distance
- A lavish parallel kitchen with a separate dining area
- A separate balcony and washing machine space
- Lavish master bedroom with an attached bathroom
- A full sized children's bedroom with a full length wardrobe space
- Adequate lighting and ventilation throughout the apartment
- Adequate circulation space all through the apartment



2 BHK  
LARGE  
APARTMENT

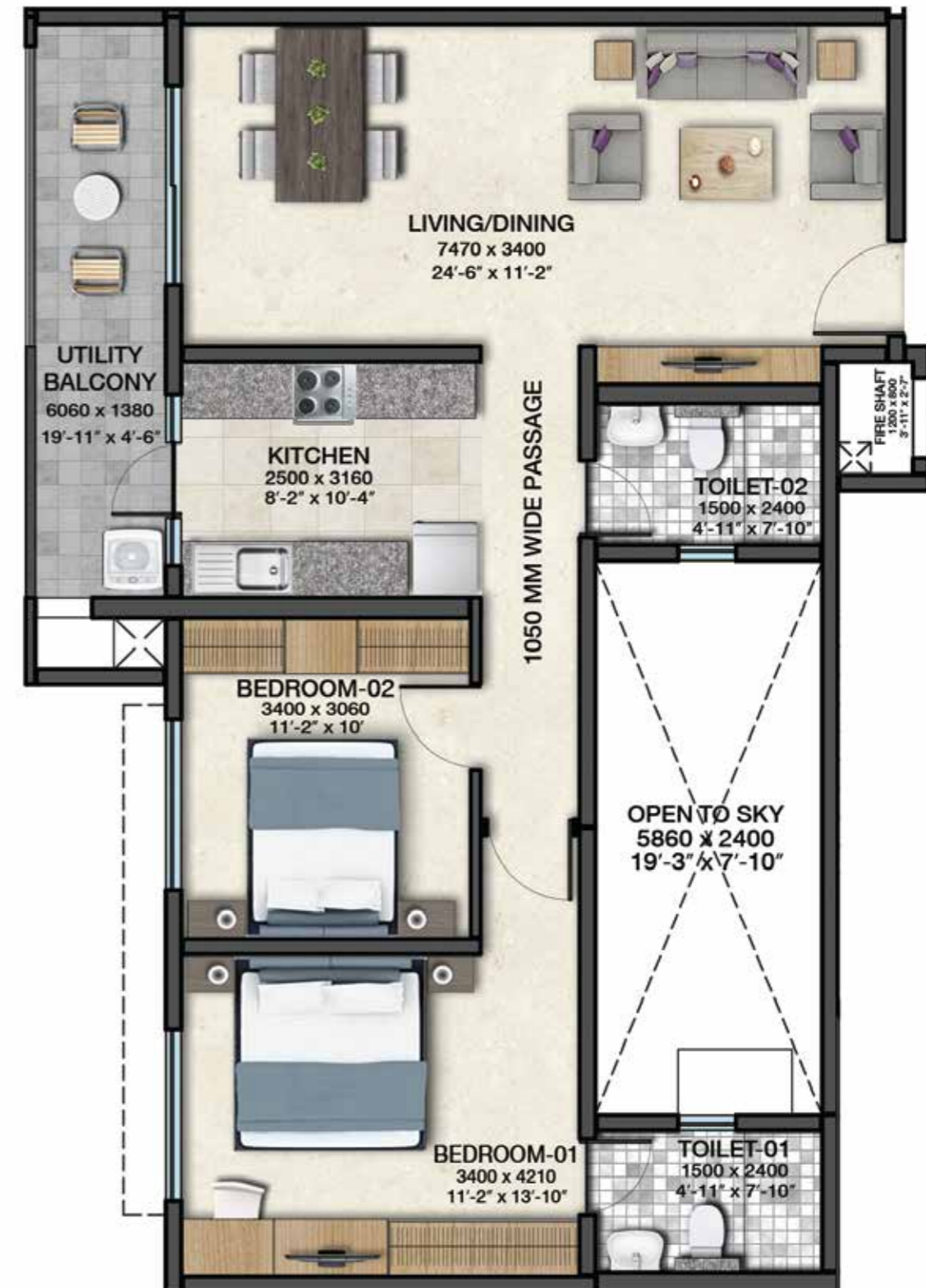
SOBHA  
**dreamacres**  
A SOBHA DREAM SERIES PROJECT




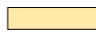


SBA – 1210.21 sq ft  
112.43 sq mts

For families who are looking for space and utility, this unit fits perfectly. With a super sized living and dining area and a grand balcony, this unit provides the luxury of space. This apartment also has a large kitchen, 2 full sized bedrooms and 2 bathrooms.

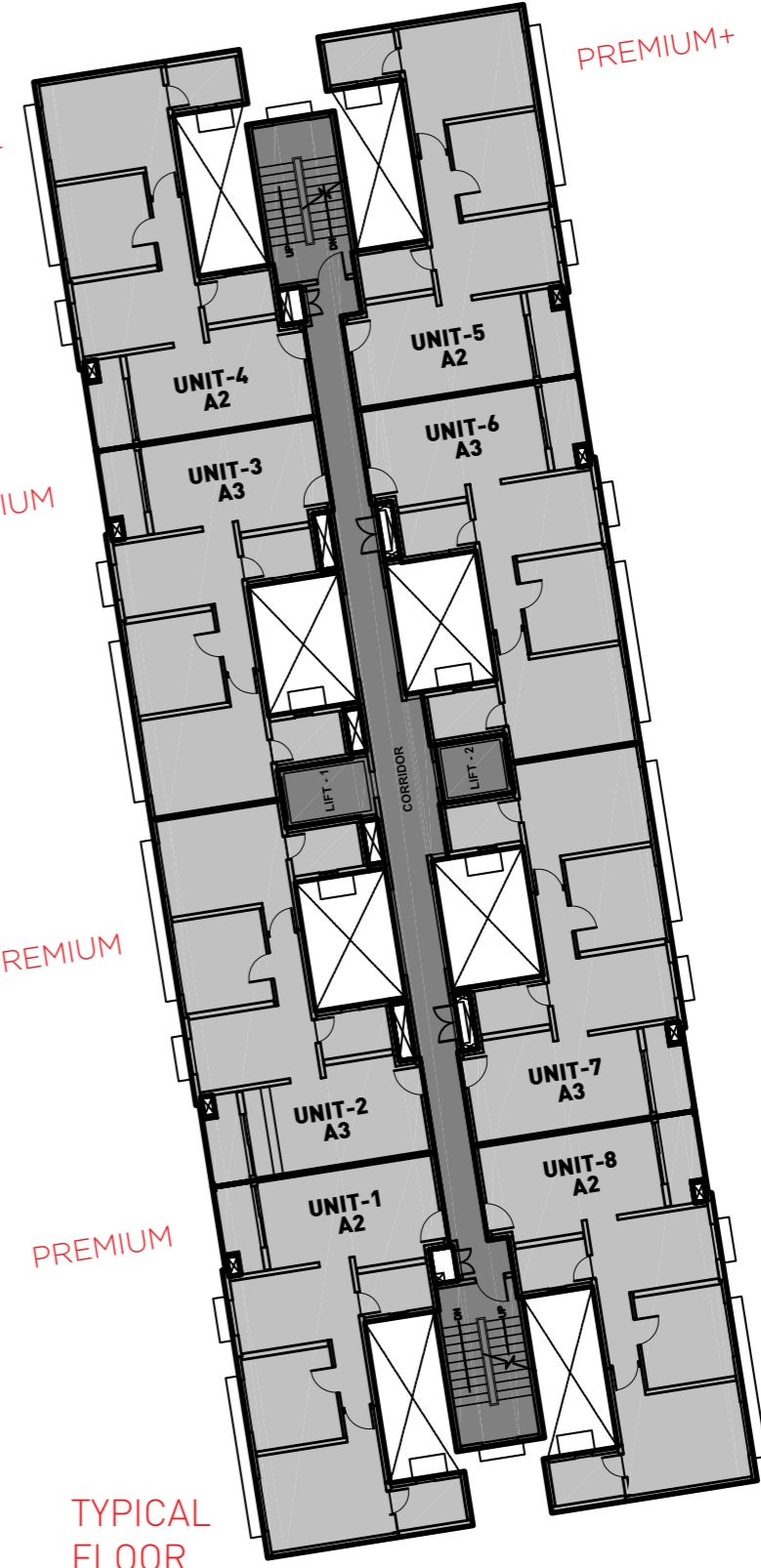
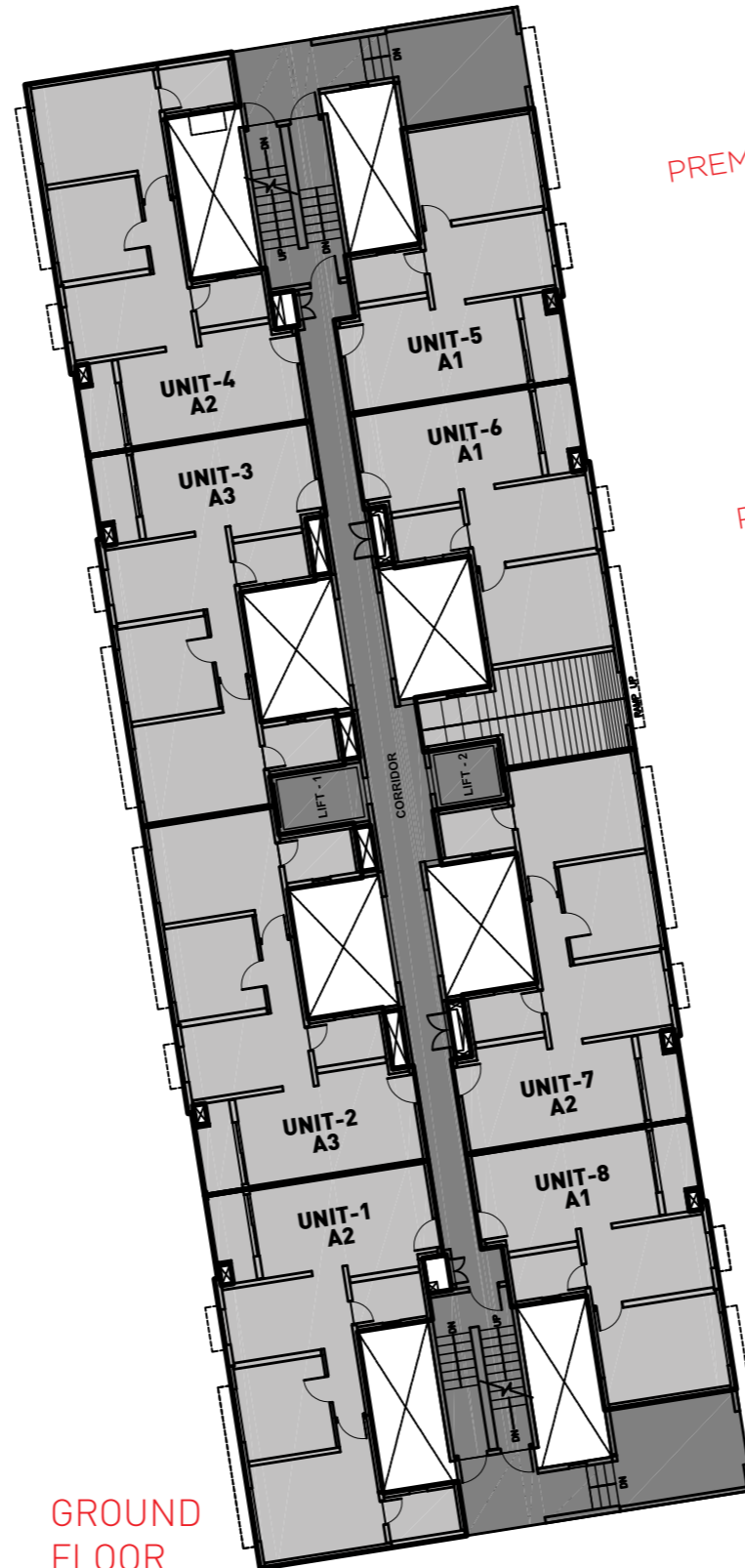
- Large living room with a 12 ft. TV viewing distance
- A lavish parallel kitchen with a separate dining area
- A grand balcony with an attached utility space
- Lavish master bedroom with an attached bathroom
- A full sized children's bedroom with a full length wardrobe space
- Adequate lighting and ventilation throughout the apartment
- Adequate circulation space all through the apartment



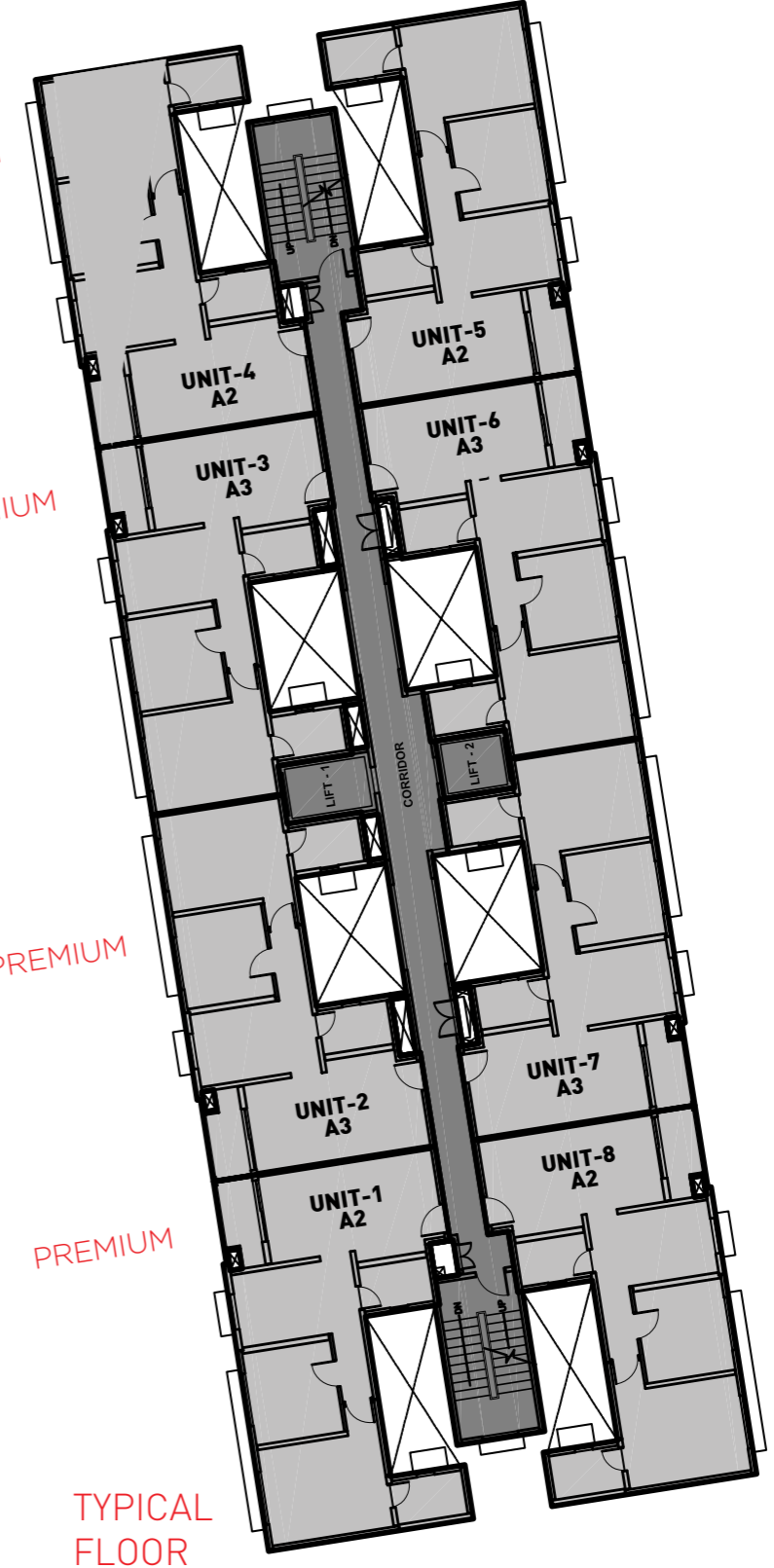
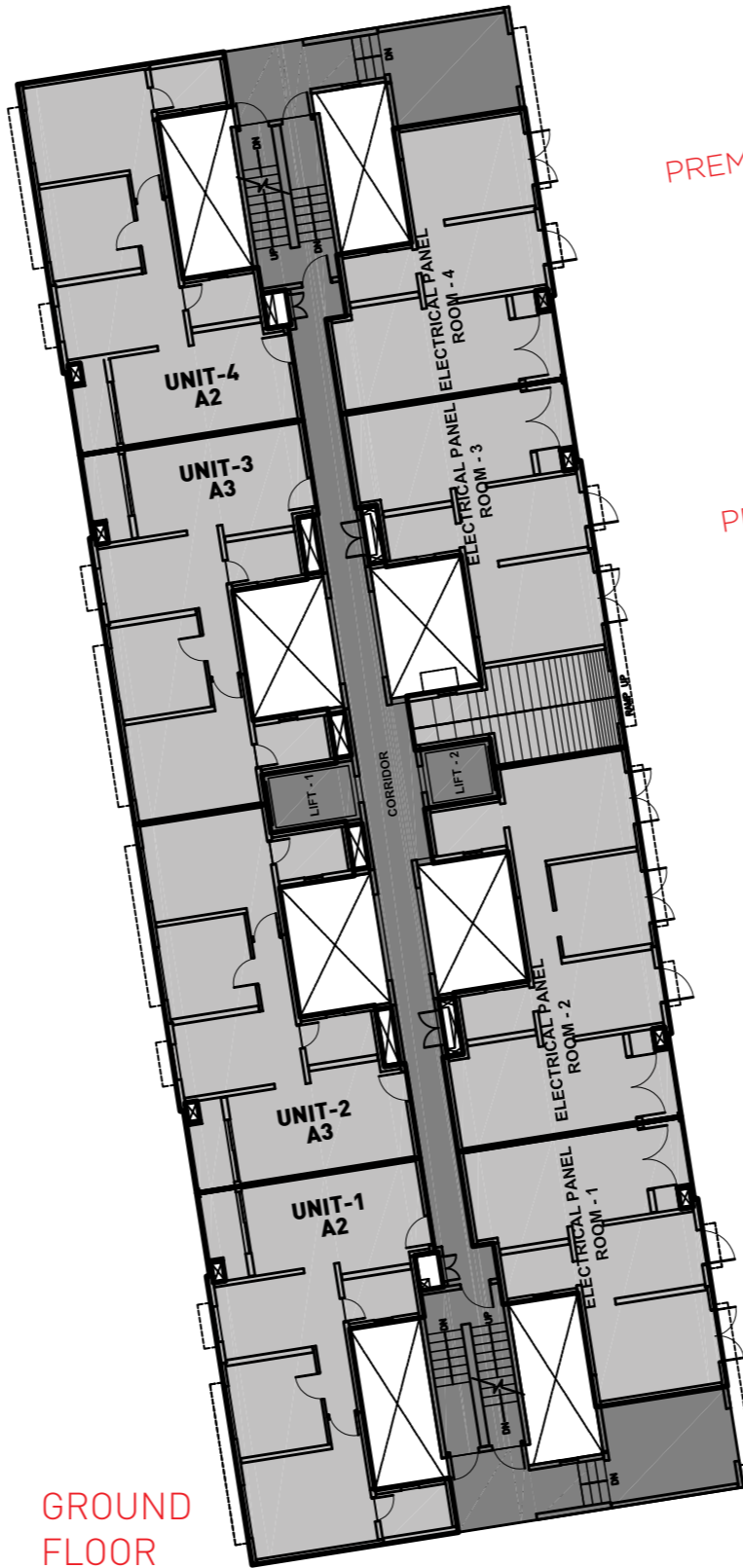
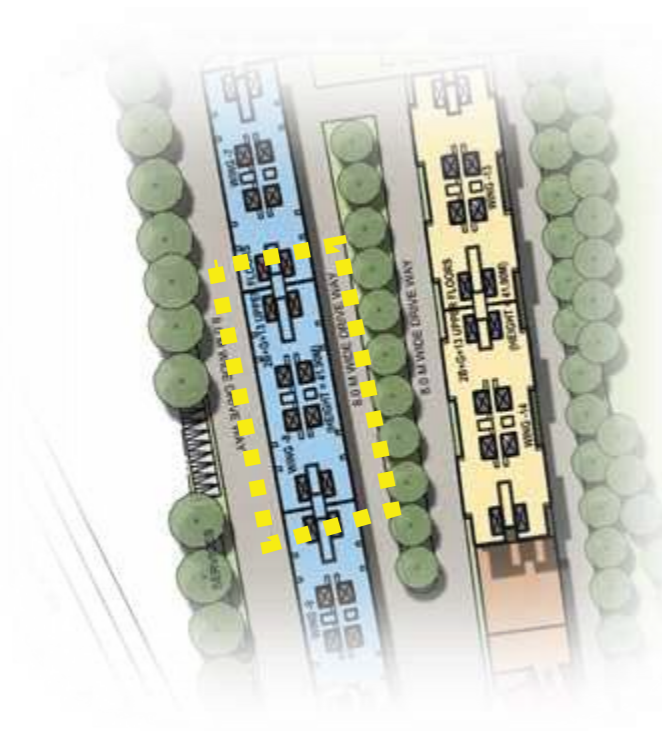


| LEGEND                                                                                |                         |
|---------------------------------------------------------------------------------------|-------------------------|
|  | TYPE A - 1000 SFT BLOCK |
|  | TYPE B - 1200 SFT BLOCK |
|  | TYPE E - 650 SFT BLOCK  |
|  | CLUB HOUSE              |

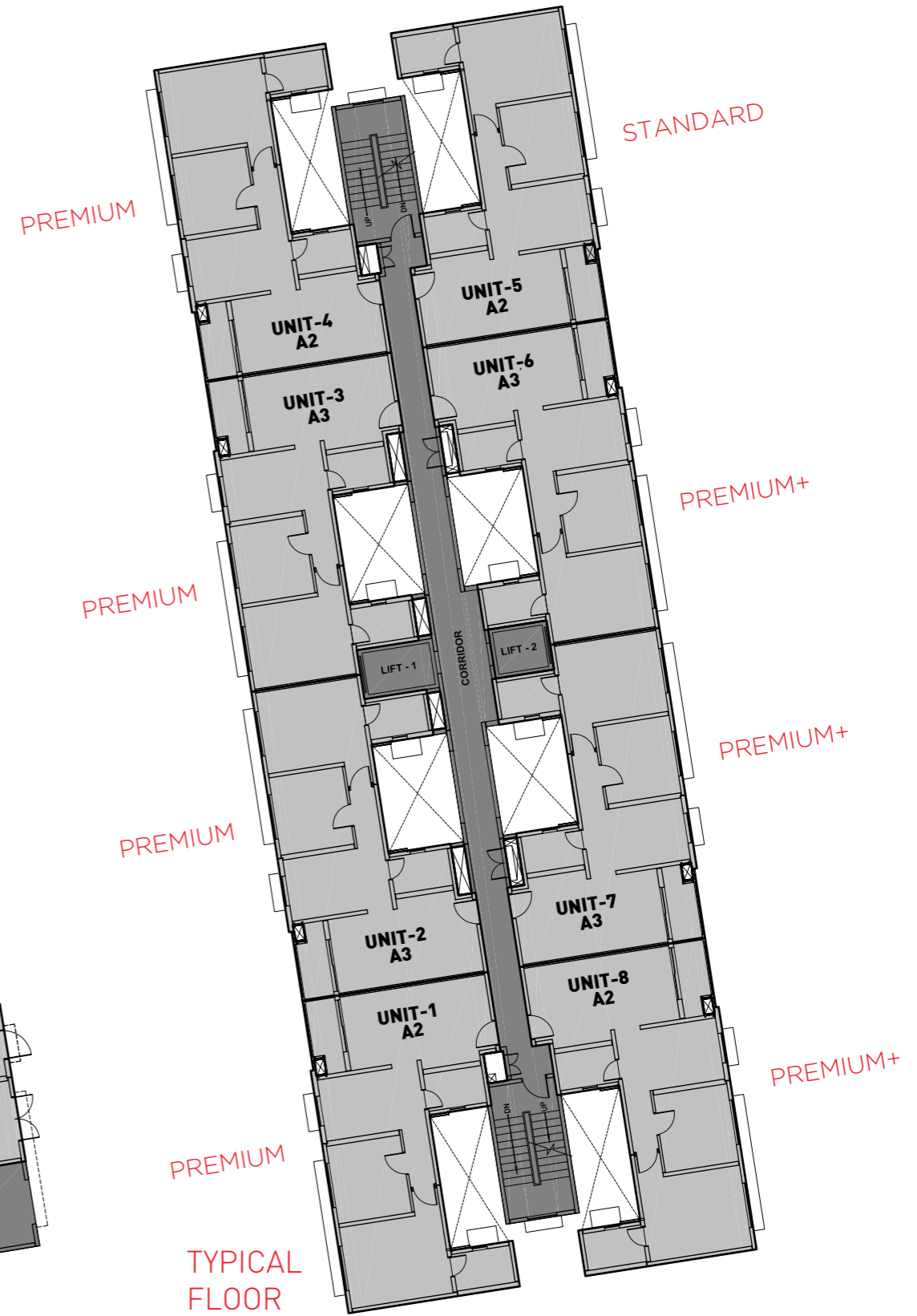
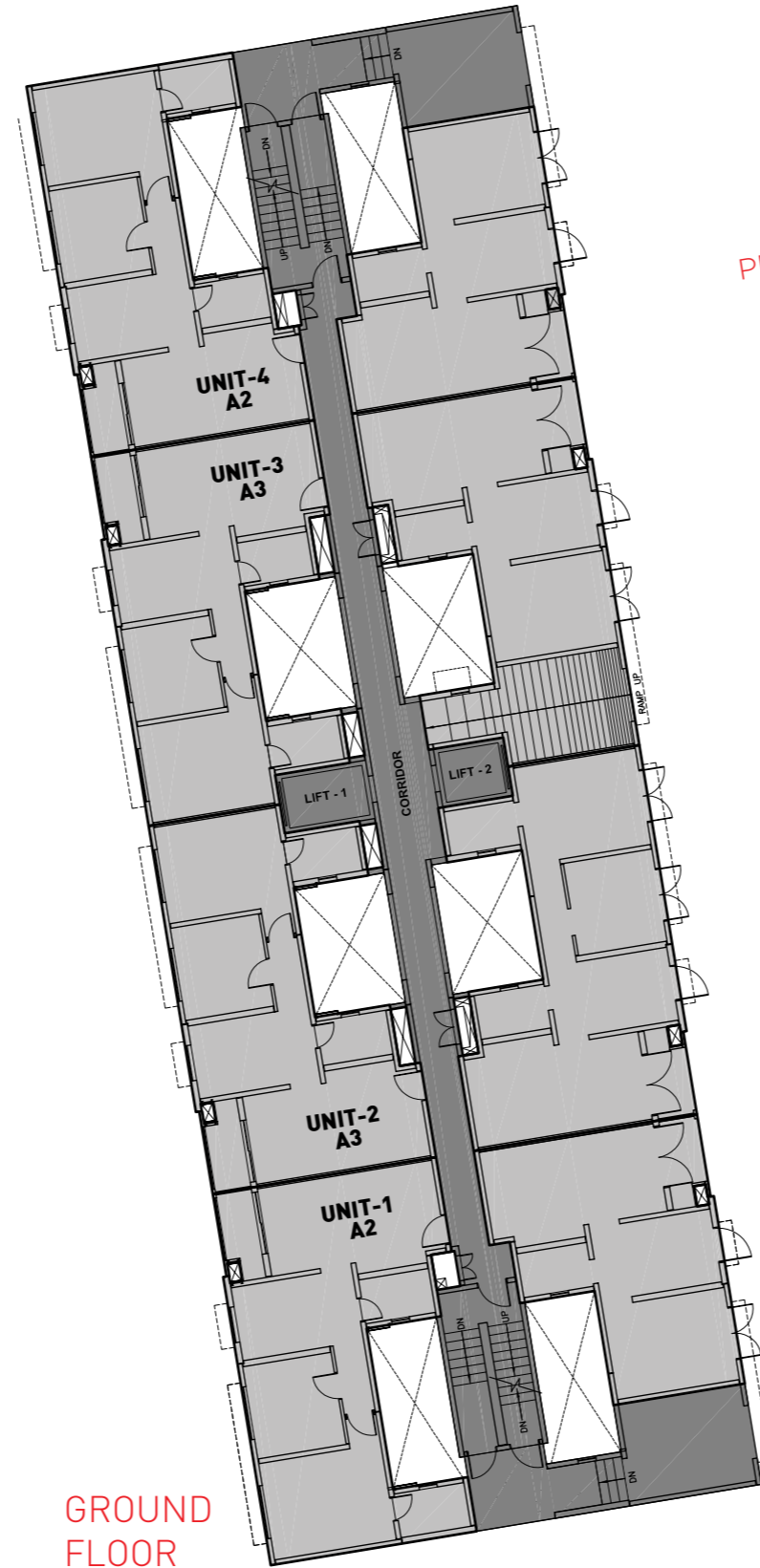
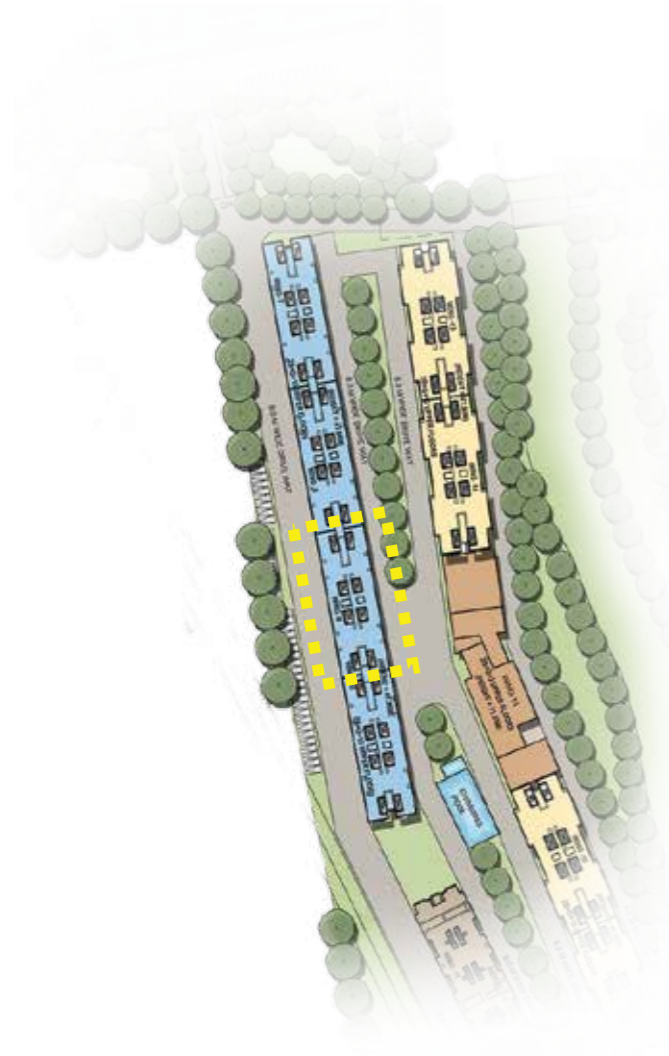
Wing 7



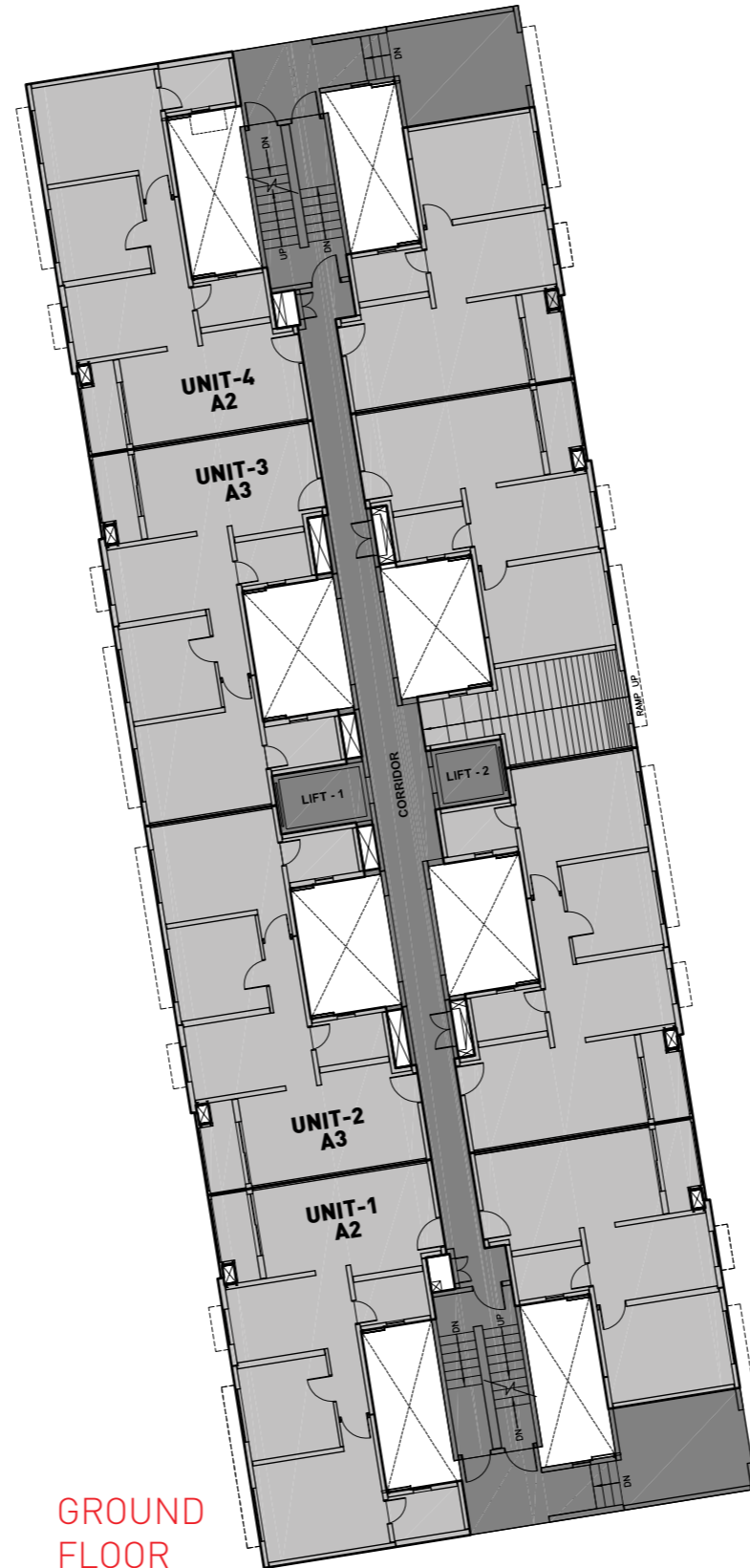
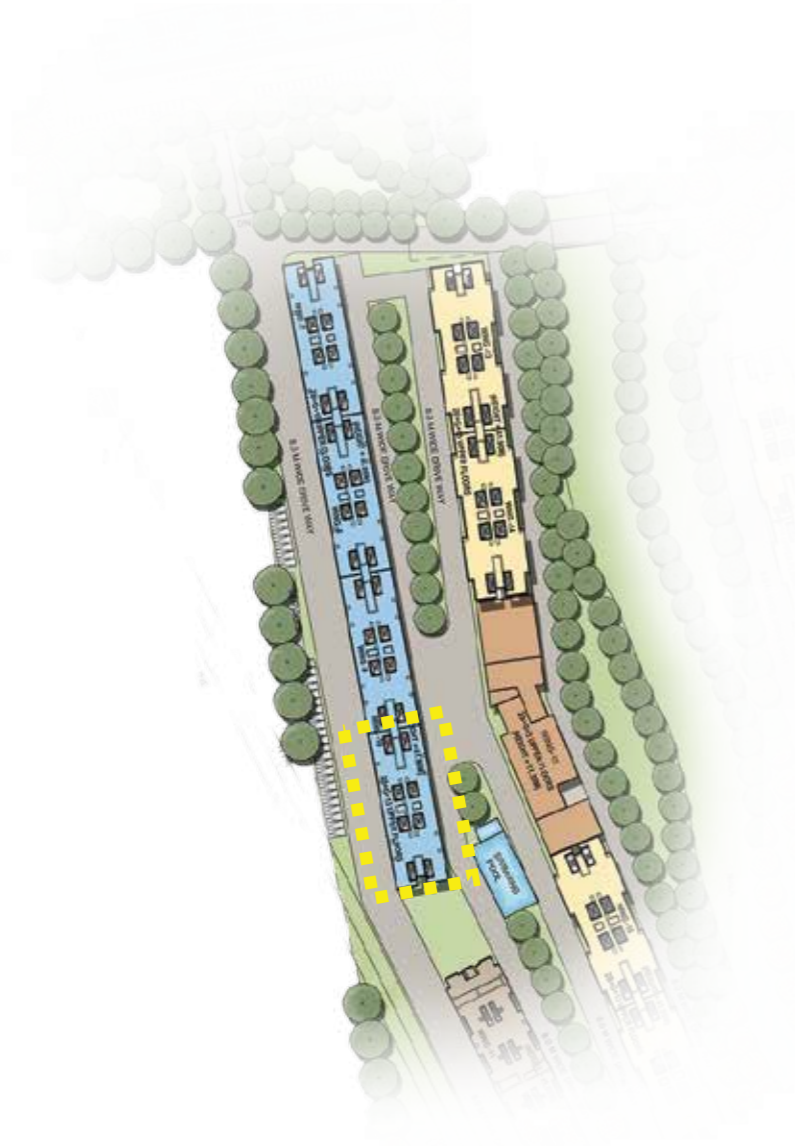
Wing 8



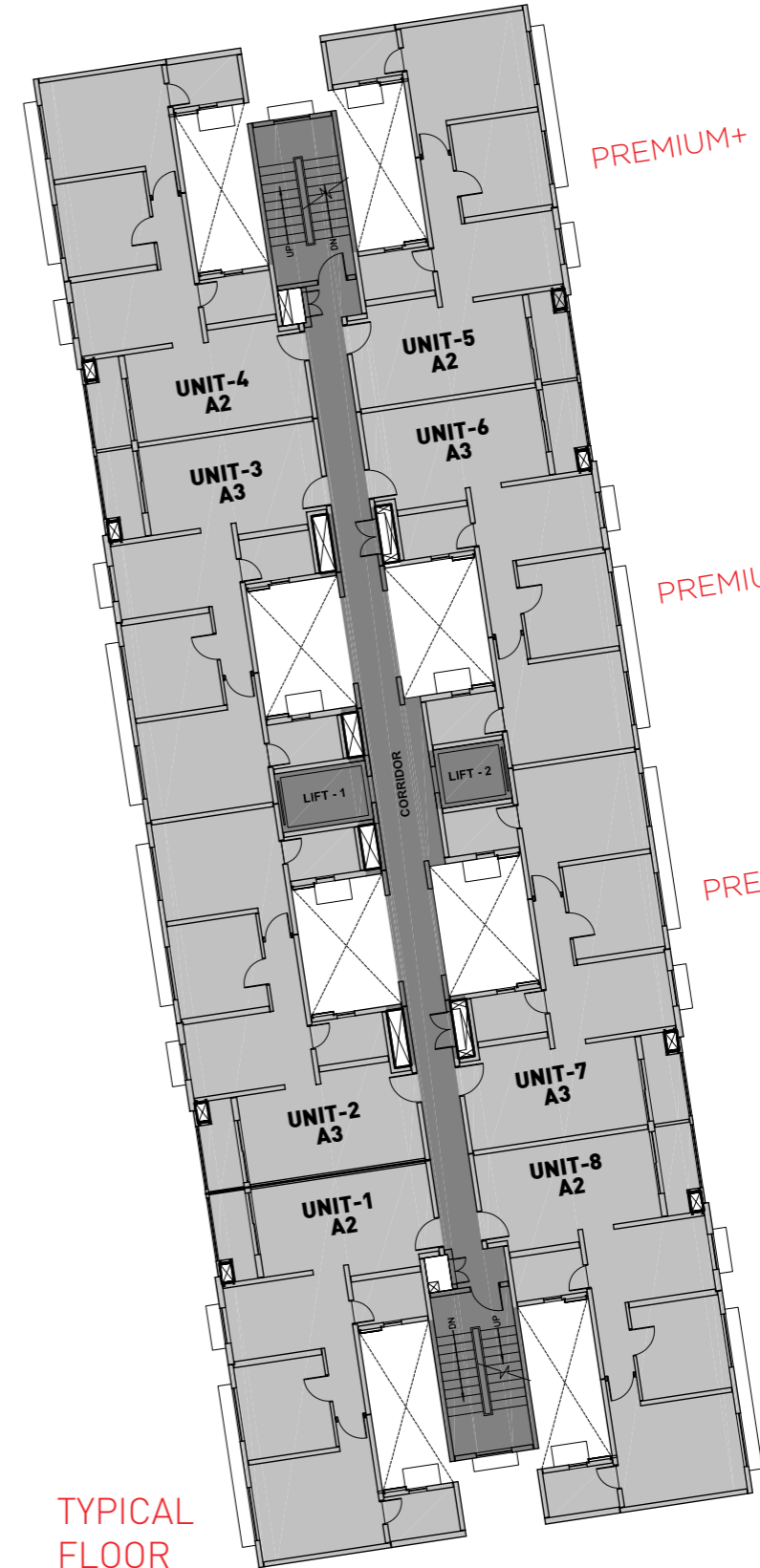
Wing 9



Wing 10



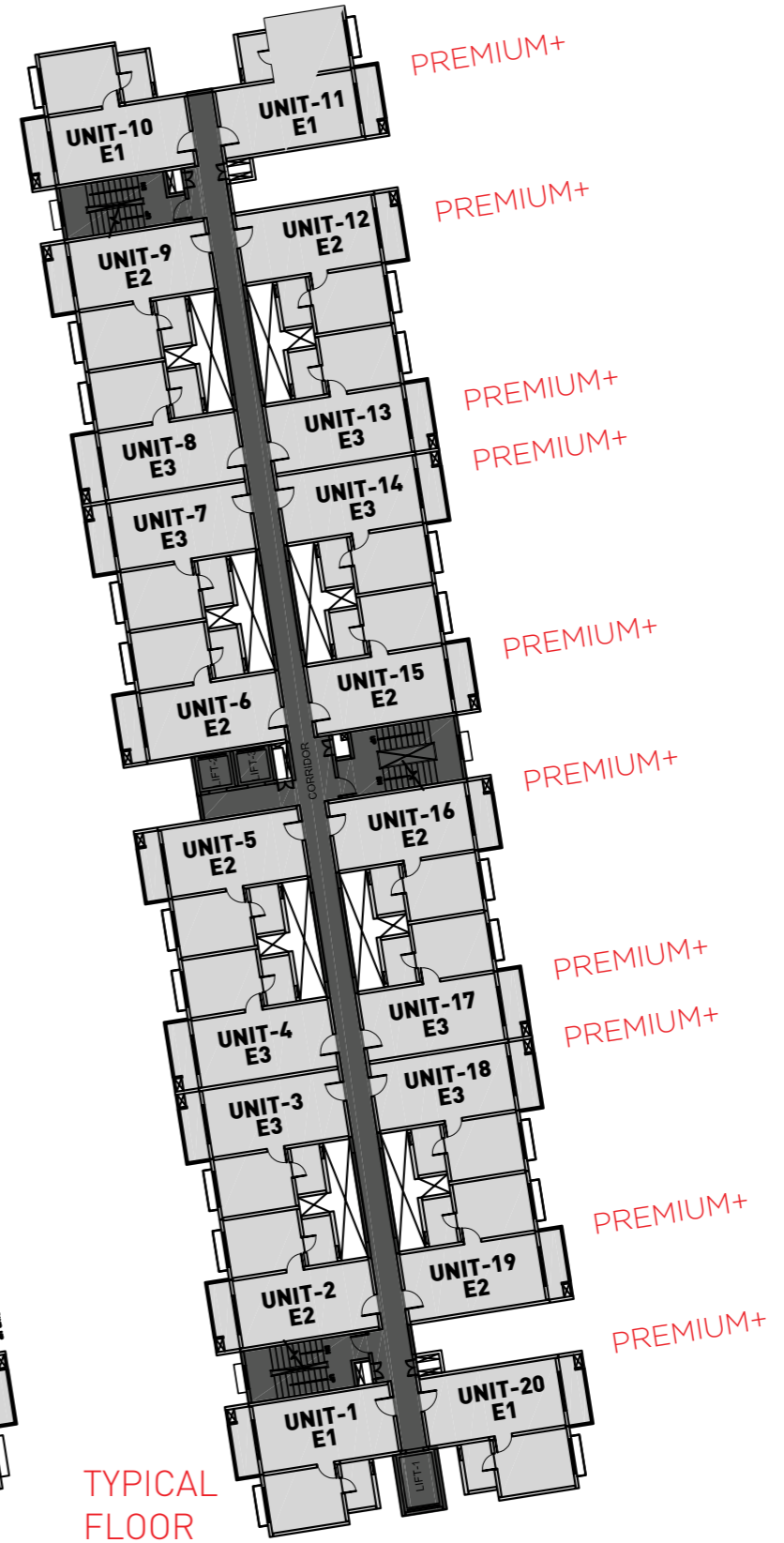
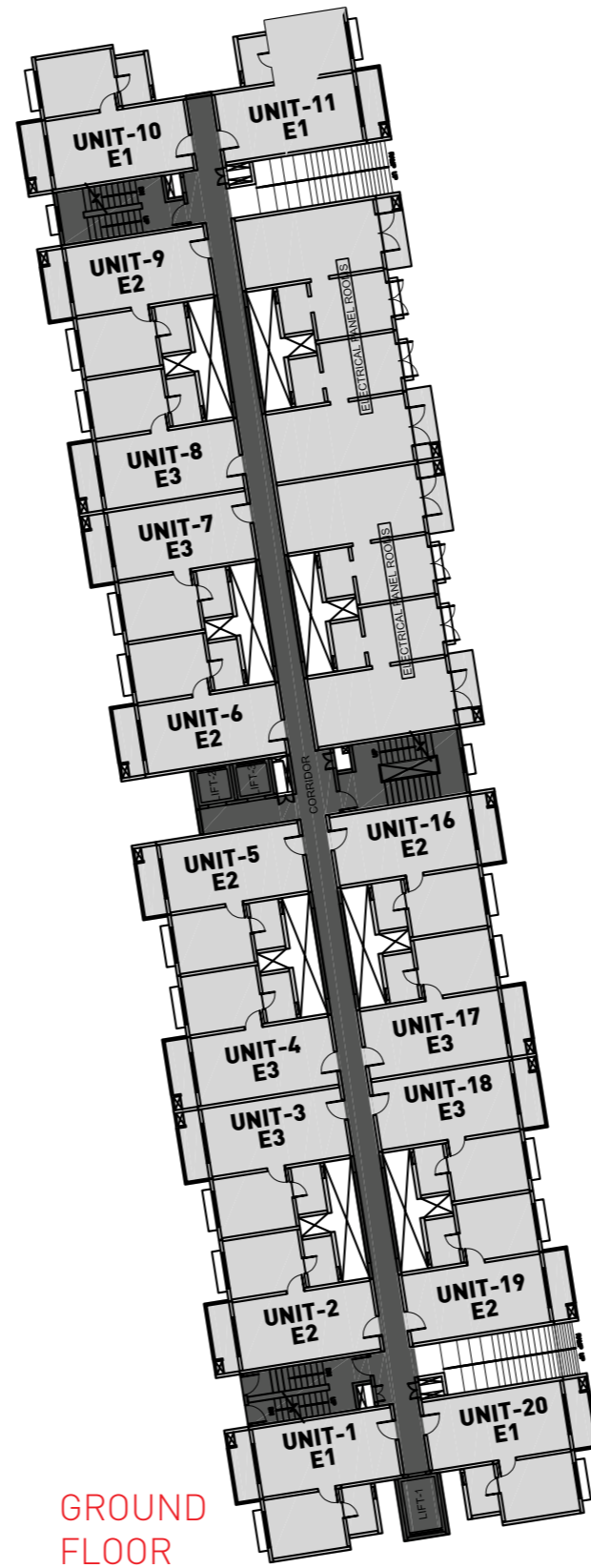
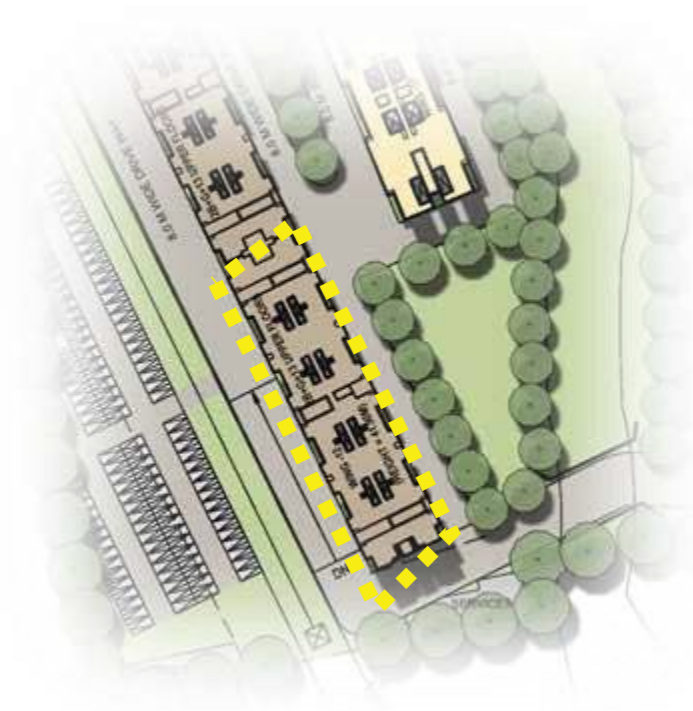
GROUND FLOOR



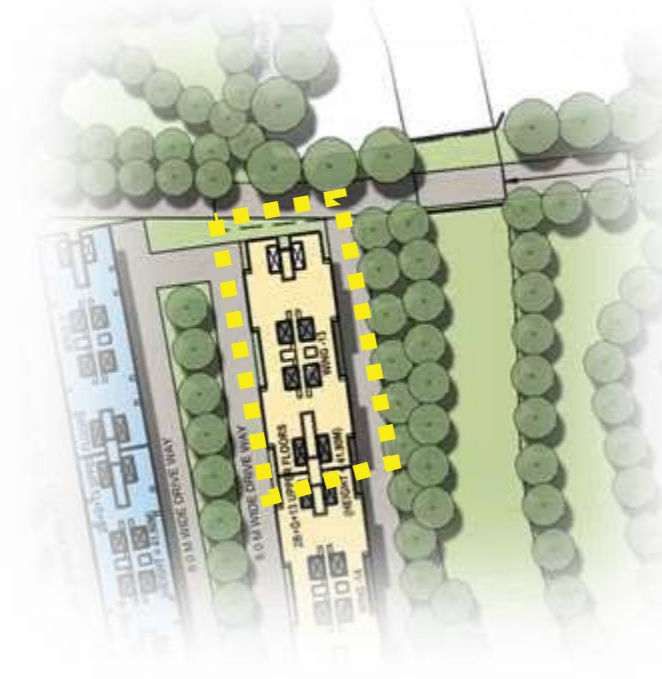
TYPICAL FLOOR



# Wing 12

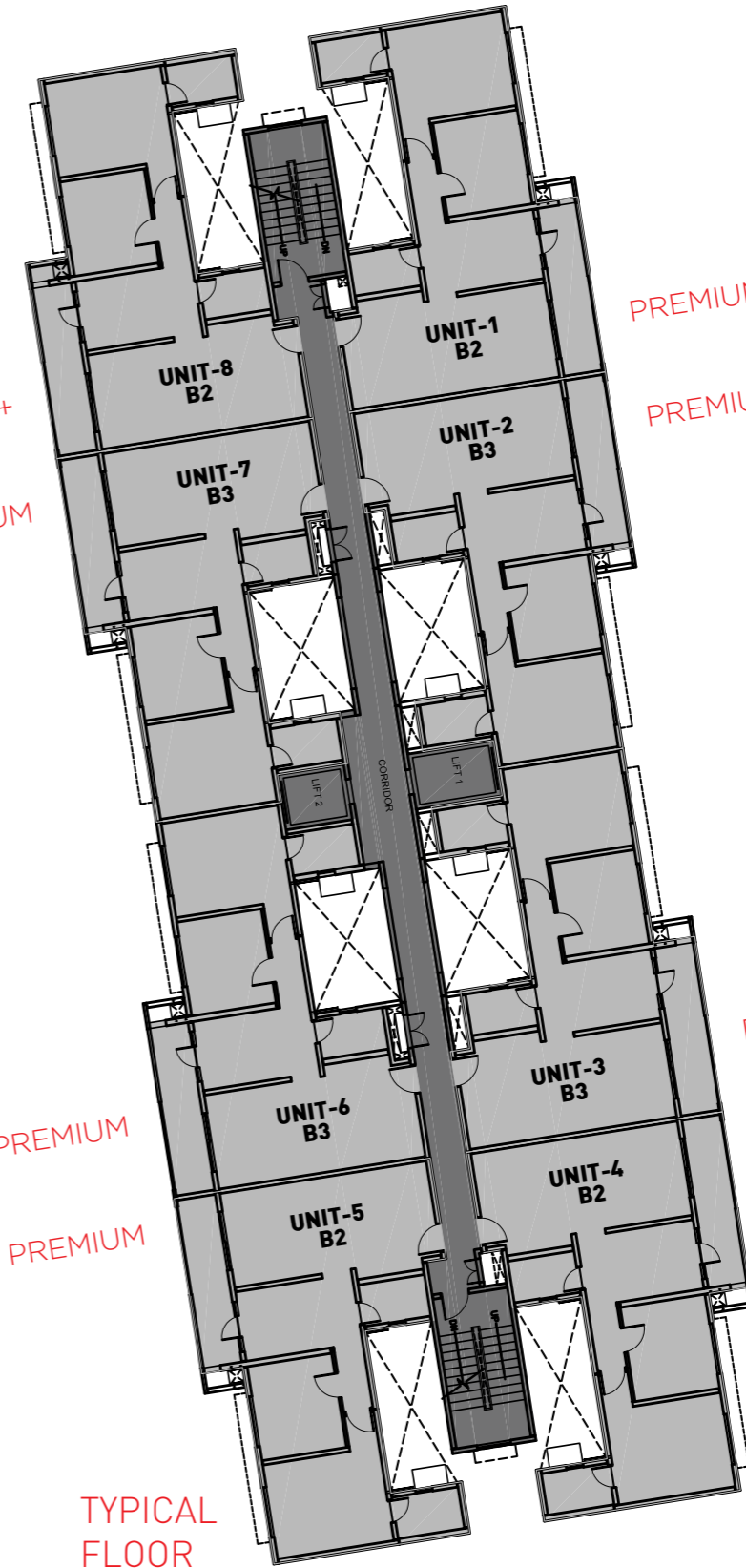


Wing 13

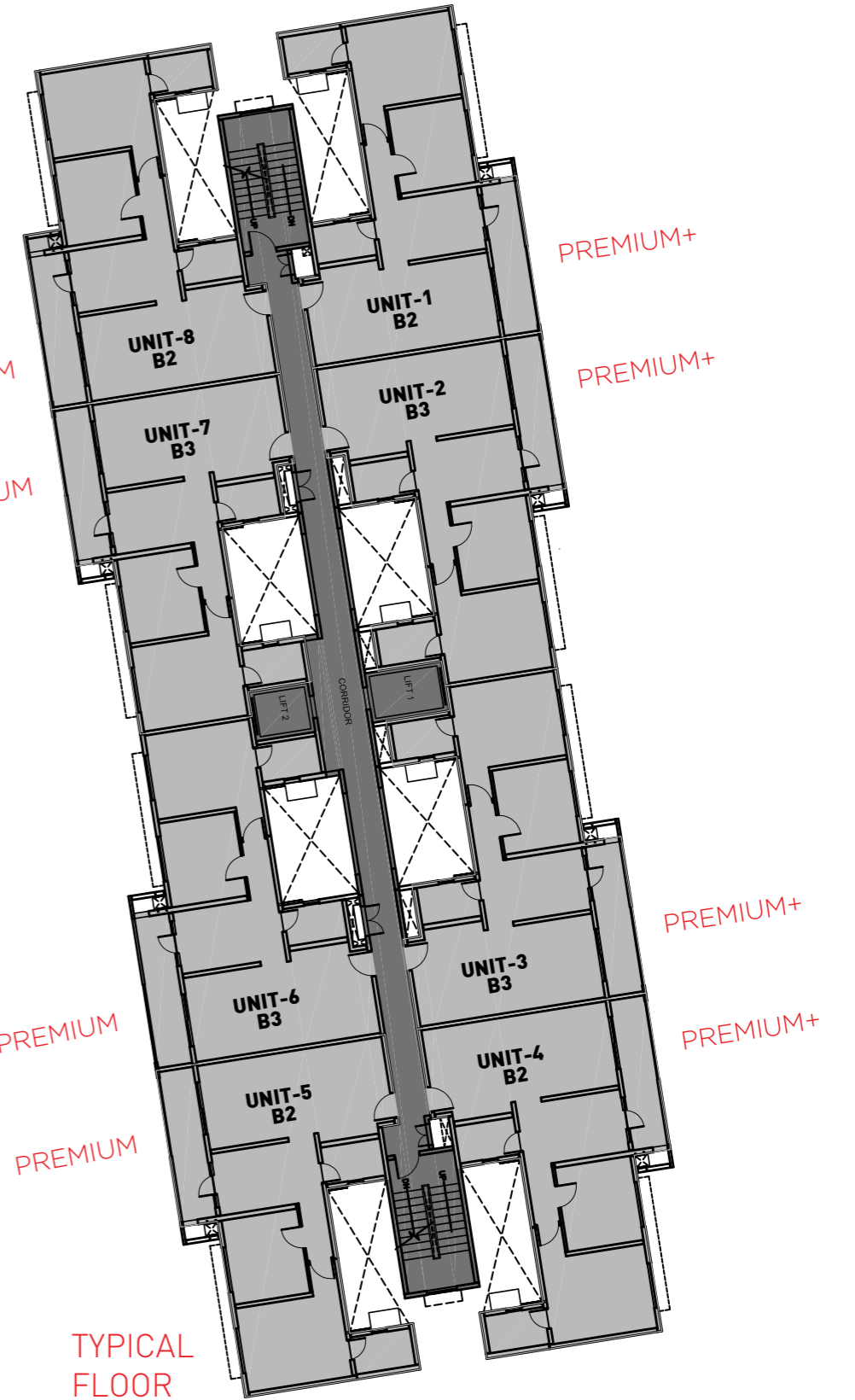
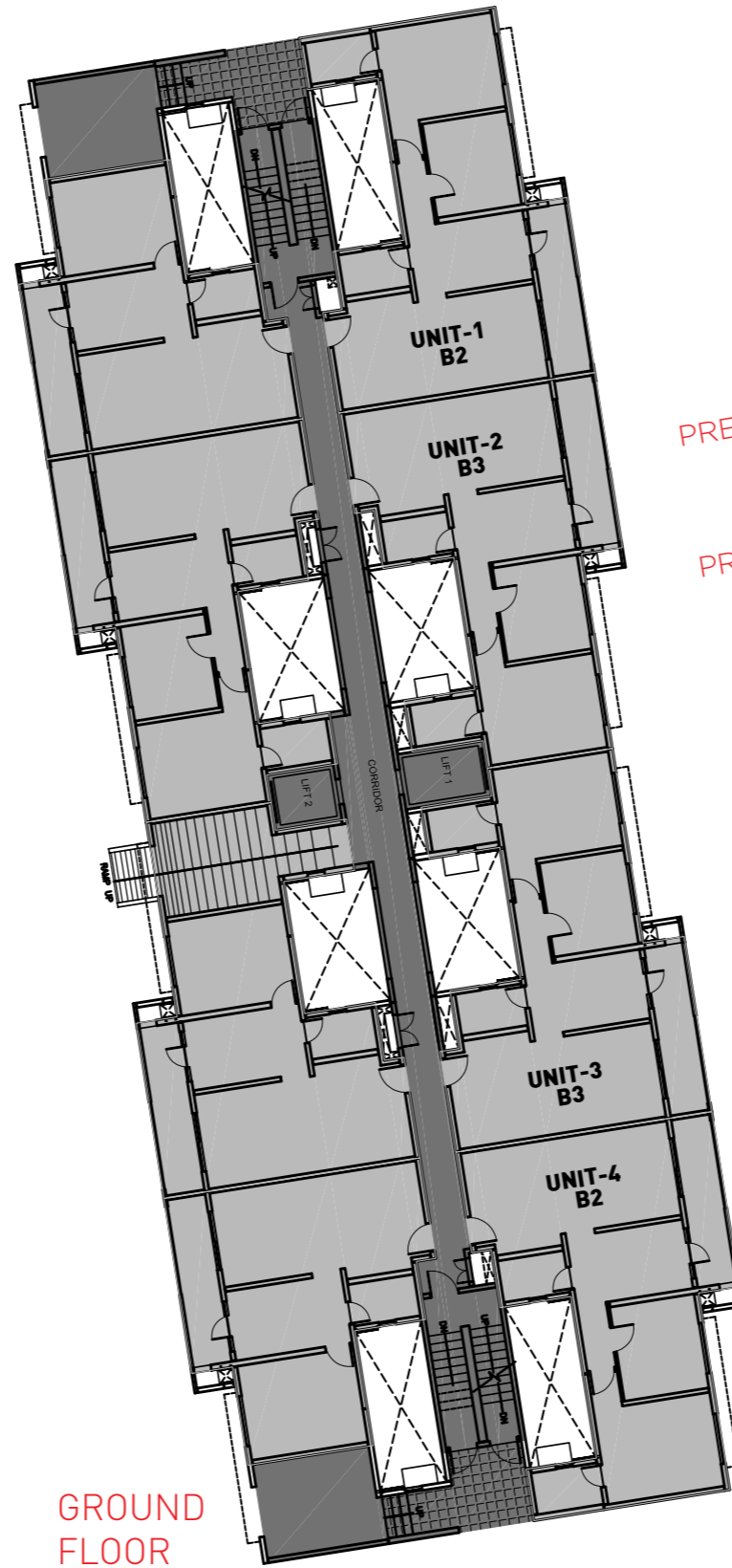
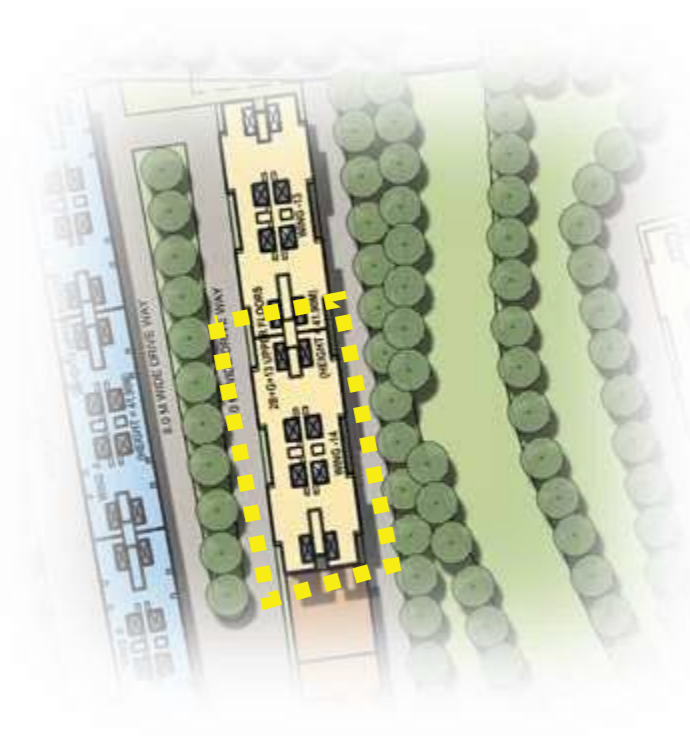


PREMIUM+

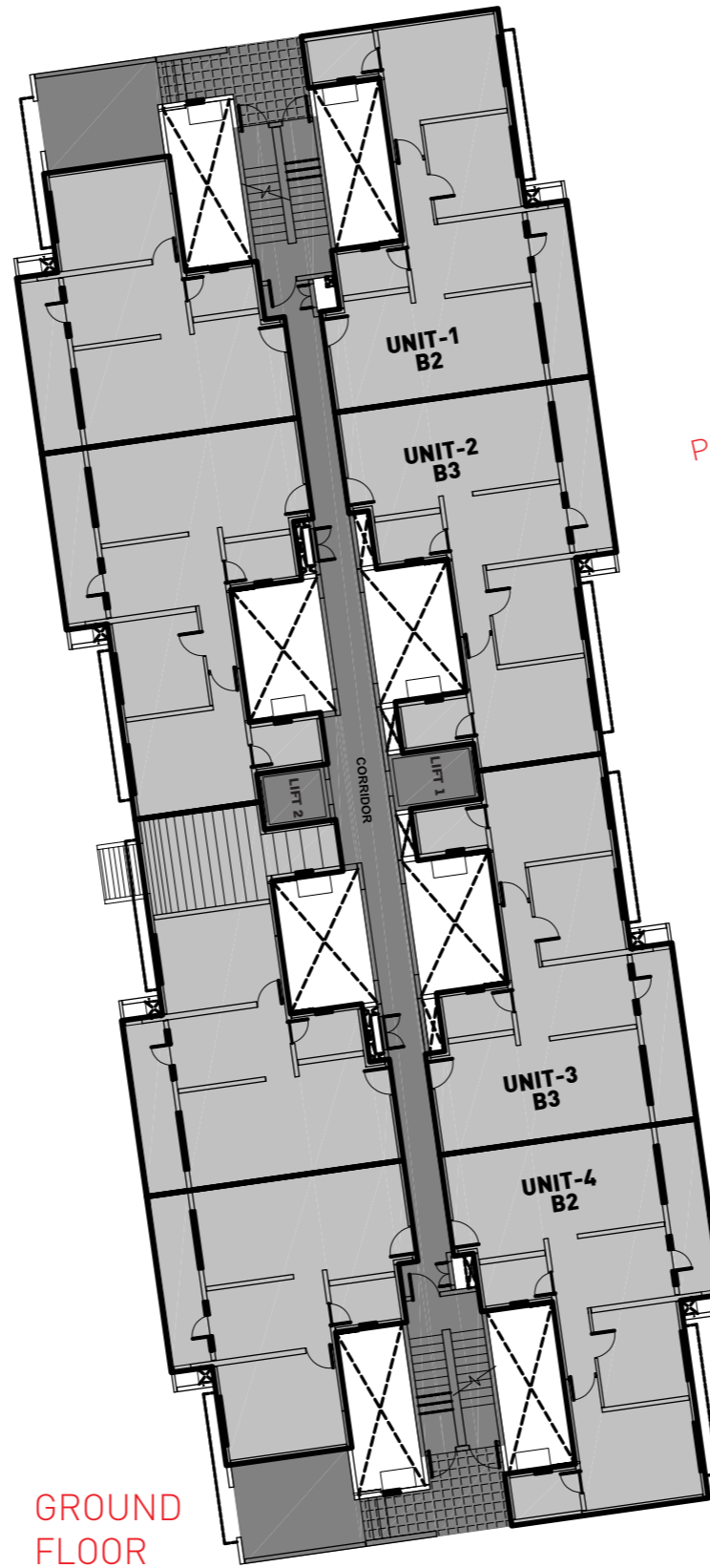
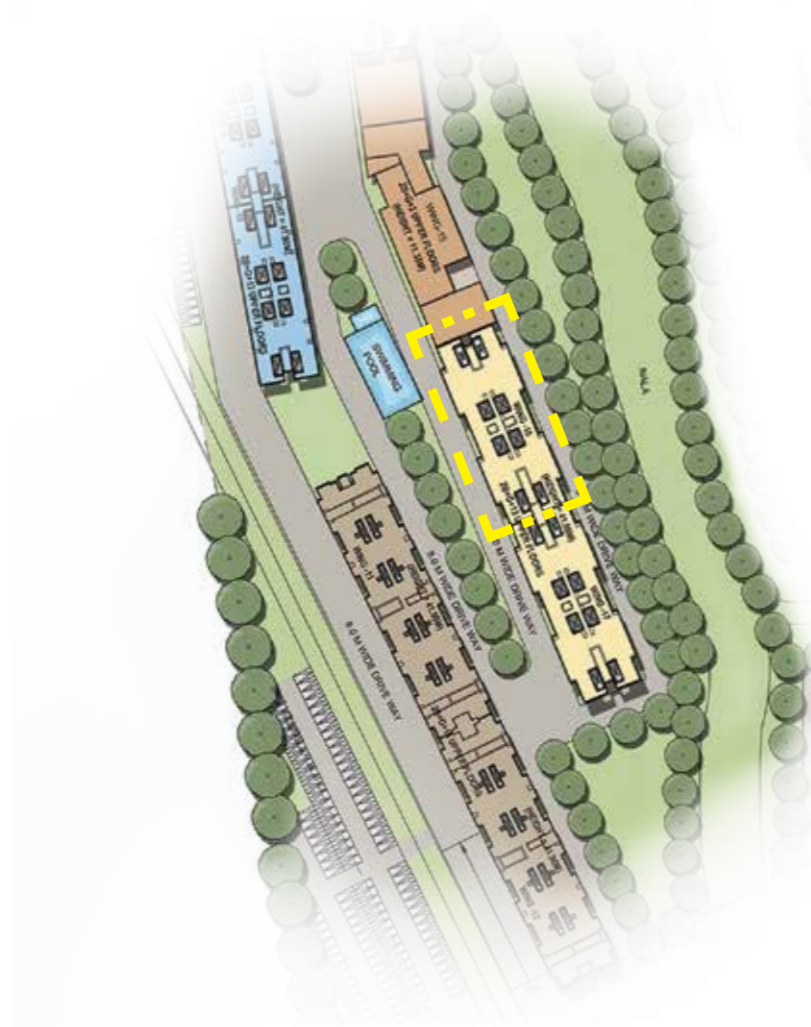
PREMIUM



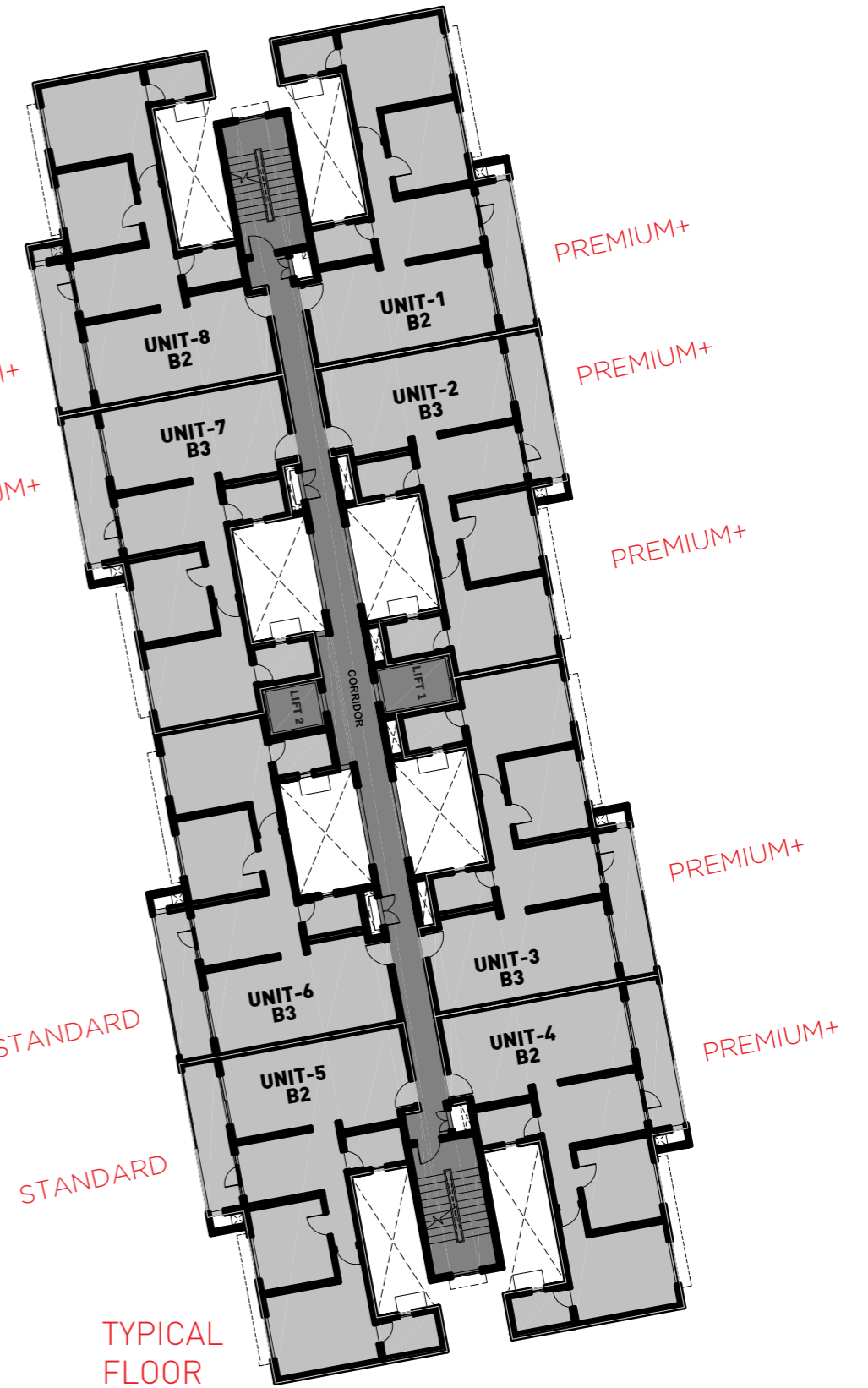
Wing 14



Wing 16



GROUND FLOOR

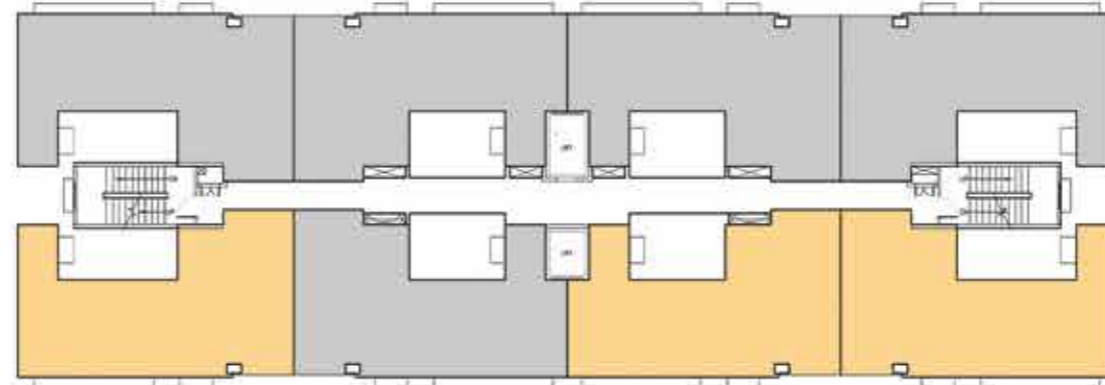


TYPICAL FLOOR



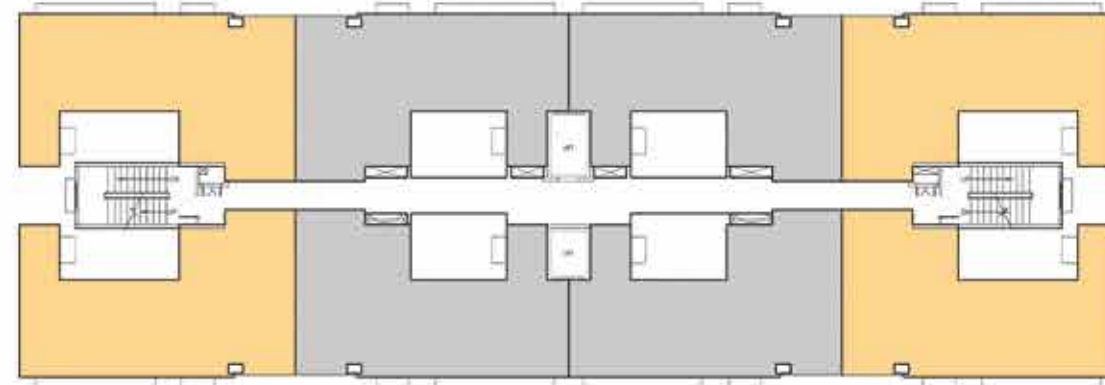
TYPE A1

SBA - 745.70 sq ft  
 69.28 sq mts



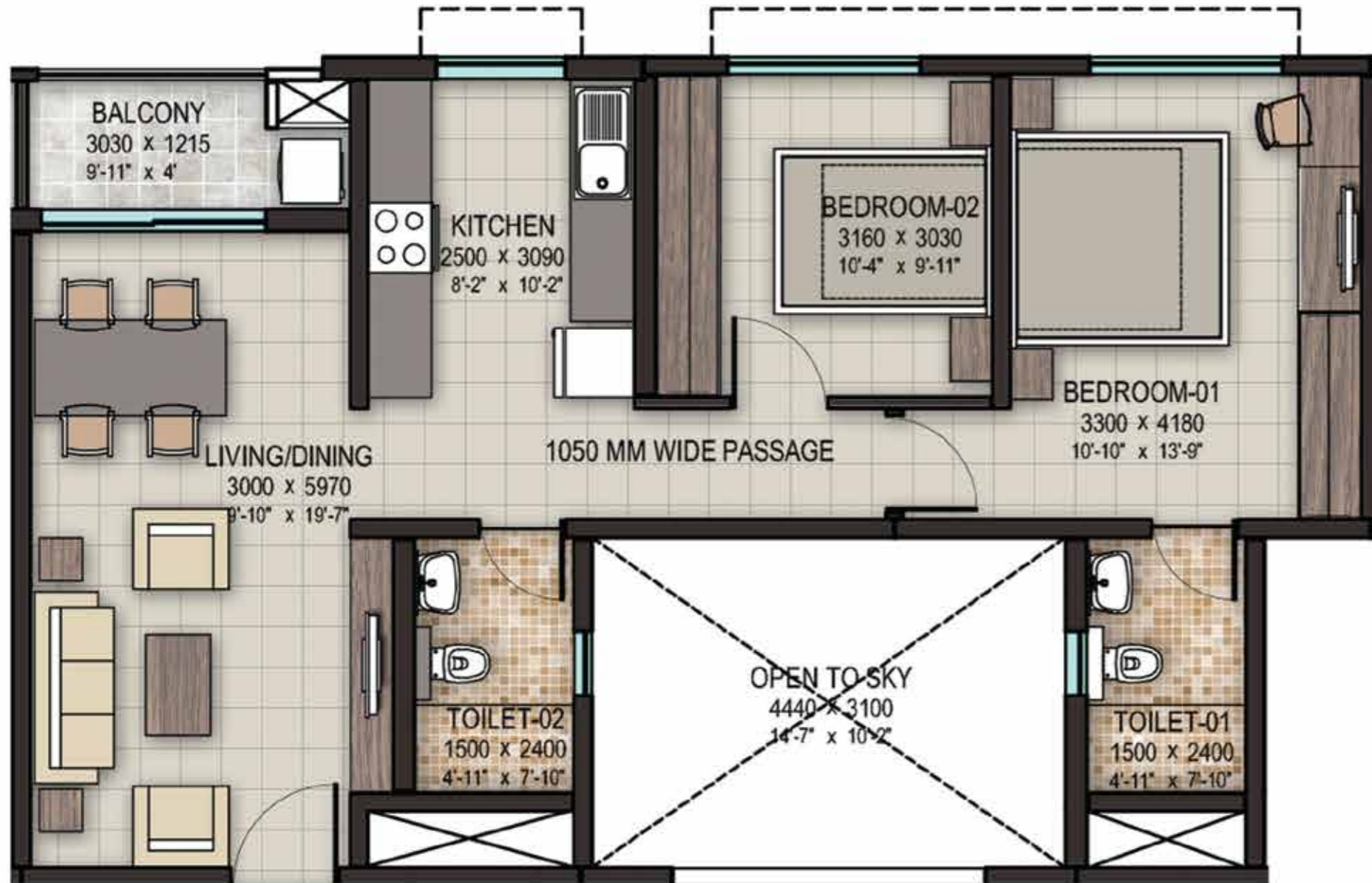
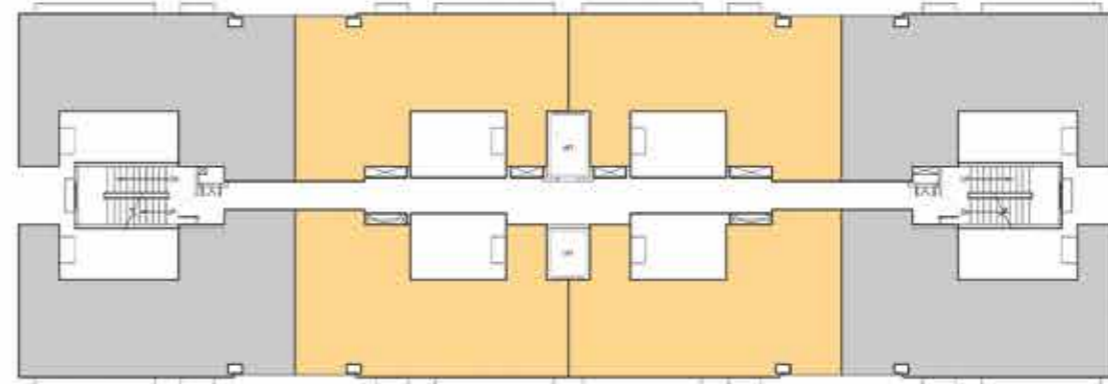
TYPE A2

SBA - 1012.08 sq ft  
 94.02 sq mts



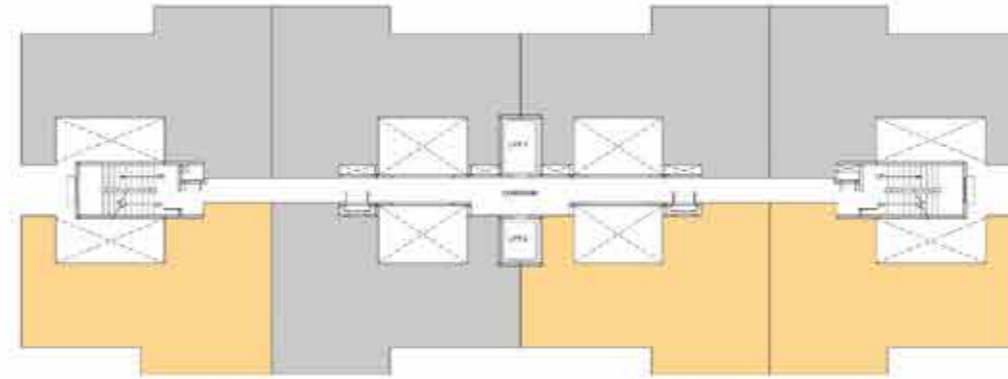
TYPE A3

SBA - 1007.36 sq ft  
 93.59 sq mts



TYPE B1

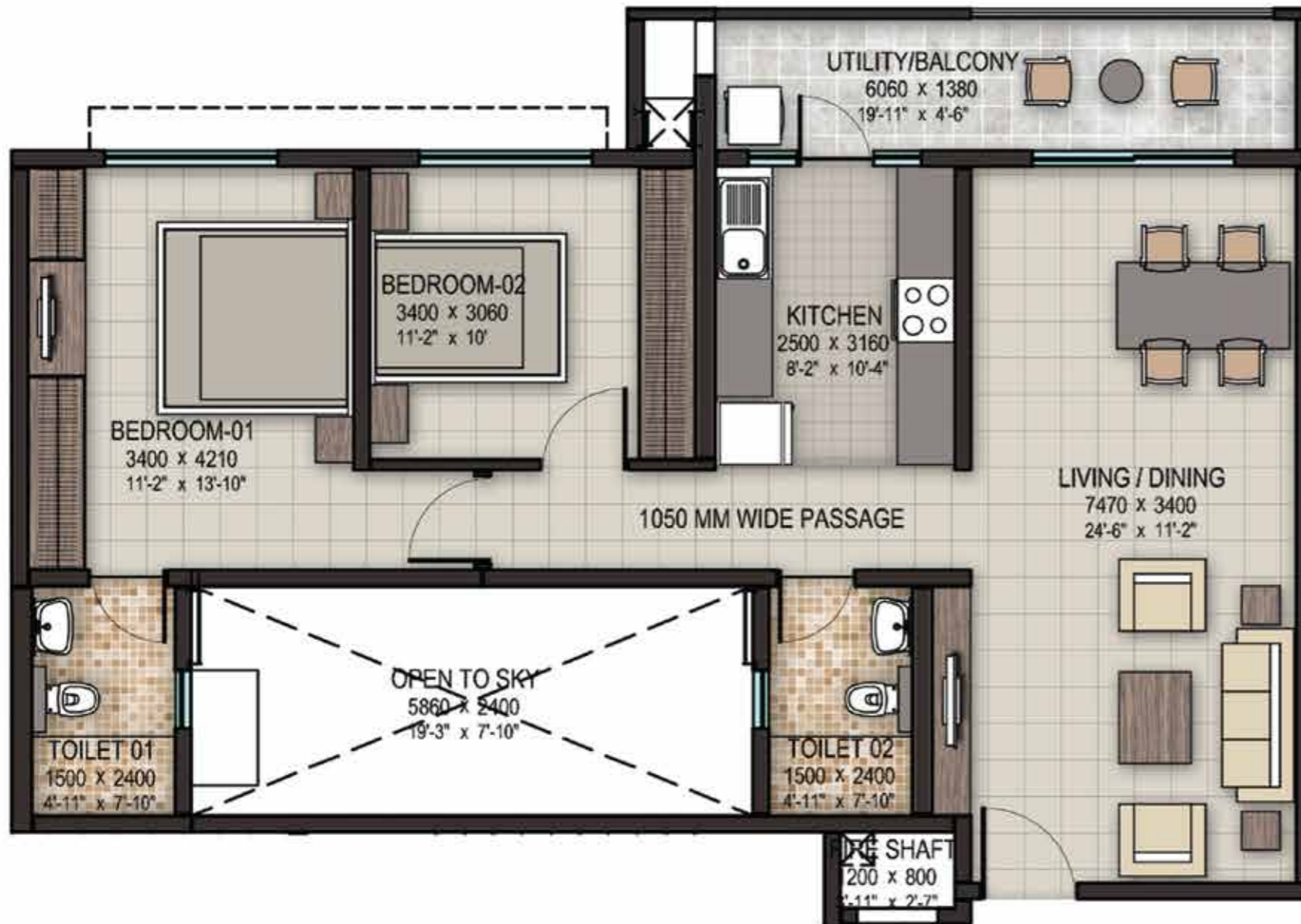
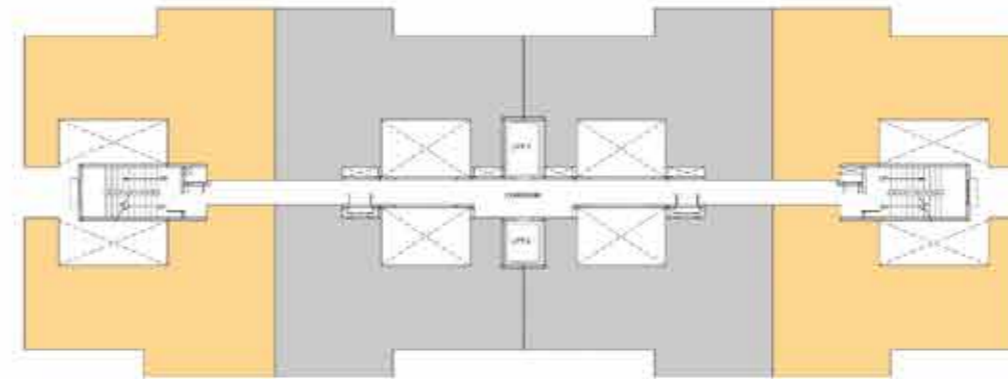
SBA - 936.52 sq ft  
 87.00 sq mts





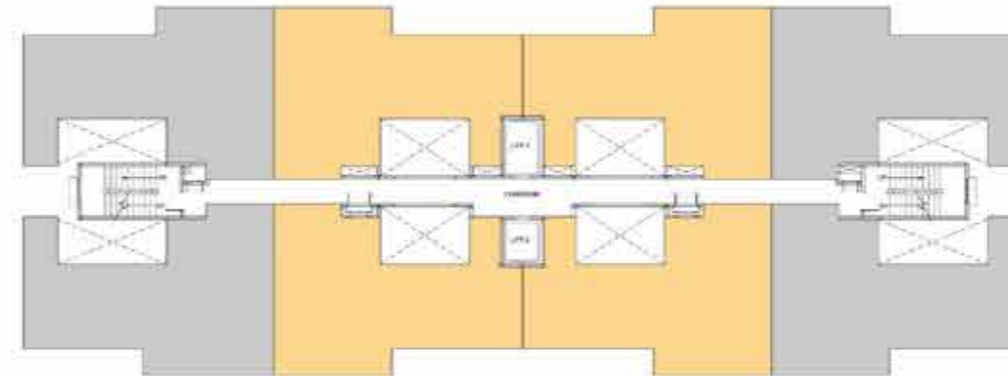
TYPE B2

SBA - 1210.21 sq ft  
 112.43 sq mts



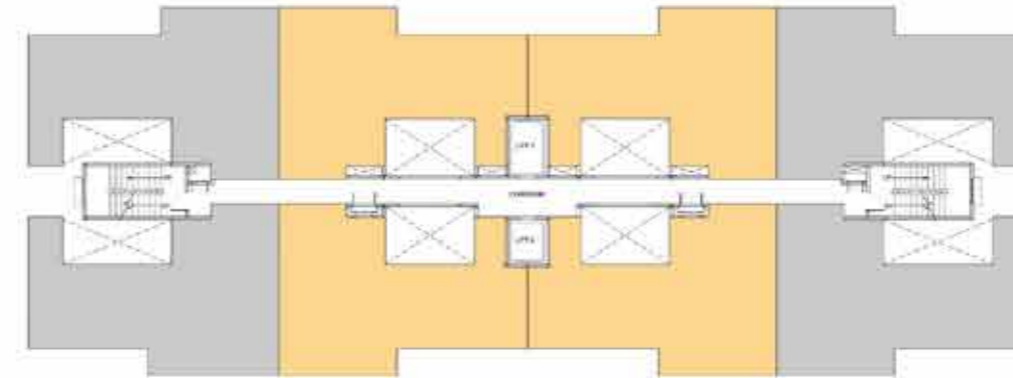
TYPE B3

SBA - 1205.47 sq ft  
 111.99 sq mts



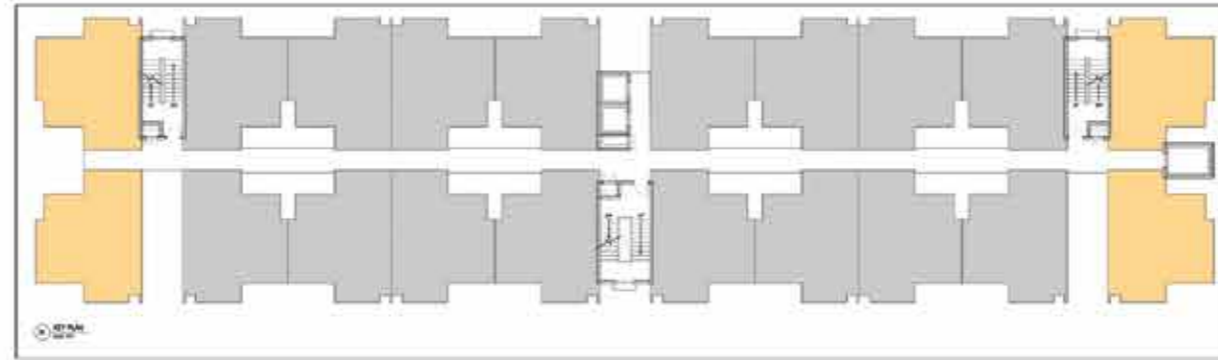
TYPE B3

SBA - 1205.47 sq ft  
 111.99 sq mts



TYPE E1

SBA - 661.18 sq ft  
 61.43 sq mts



TYPE E2

SBA – 656.86 sq ft  
 61.02 sq mts

