



**BRIGADE**

Building Positive Experiences

Come, Live

Life's Little Treasures

at Brigade Woods

RERA Reg. No.:  
PRM/KA/RERA/1251/446/PR/180611/001895  
Available at [www.rera.karnataka.gov.in](http://www.rera.karnataka.gov.in)



*Closer to your needs*

**CLOSEST TO YOUR HEART**

**BRIGADE**  
**WOODS**  
— WHITEFIELD —



*For every person who longs for the pace of a city life, there is someone who finds bliss far, far away from the hustle and bustle. For those who crave peace, quiet and privacy, there is nothing better than a home nestled among gorgeous trees. And for those who swear by the fast-paced city life, there is nothing better than living in the comforts of the city. But one thing common between them is the innate desire to live memorable moments that over time become life's little treasures. Treasures that will be cherished forever.*

Presenting Brigade Woods, just a handful of woodsy inspired dream homes that run a gamut of comforts to appeal to both kinds.

A life 'full of life'

Filled with happiness & joy

Awaits you at Brigade Woods





Home to over 17 different species of flora, Brigade Woods is an exemplary project where nature and modern infrastructure entwine harmoniously. Living around trees benefit us in many ways and an overall improved physical & mental health is one of them. Spending time around trees has been found to yield better cognitive function and our overall well-being. With the knowledge that living around trees keeps us hale & hearty, over 350 fully grown trees are being retained in their original form around these thoughtfully designed low-rise apartments.

A green oasis in the heart of Whitefield.



This is MY big tree

A squirrel climbed it quickly

Slipped through my neighbour's tree



*Located in Whitefield, one of the most exciting neighbourhoods in Bangalore, Brigade Woods is surrounded by Brigade Tech Park, Brigade Bhuwalka Icon, GR Tech Park, Shantiniketan & ITPL, hospitals, banks, restaurants and reputed educational institutions. The location is known for its thriving social community and physical infrastructure. The upcoming Namma Metro Rail project and major roads connect Brigade Woods to the rest of the city. Whitefield is also host to various malls such as Forum Value Mall, Phoenix Marketcity, Park Square Mall, and Inorbit Mall. Although Brigade Woods is surrounded by the best of urban infrastructure, it still is an oasis with lush green spaces and dense woods.*

Here you will experience the bliss of living amid woods coupled with urban comforts that the city has to offer. Truly a place like no other.





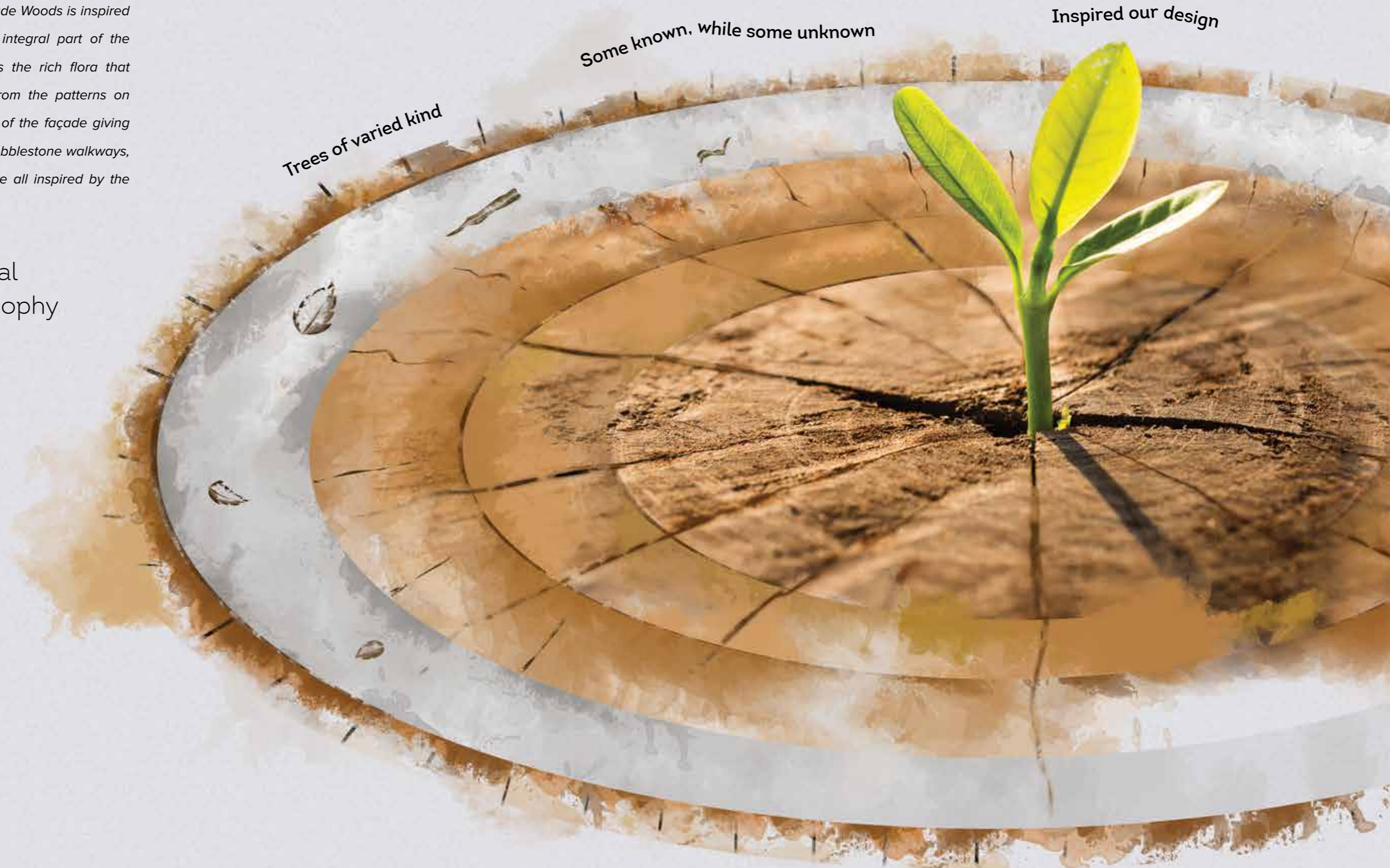
# Where location is everything





*The unique structural design at Brigade Woods is inspired by the dense trees which are an integral part of the surroundings. Every detail emulates the rich flora that is indigenous to the project site, from the patterns on the pavement to the earthy colours of the façade giving these homes a natural warm feel. Cobblestone walkways, earthy tones and smart planning are all inspired by the characteristic synergy of the woods.*

Biomimicry is central to the design philosophy at Brigade Woods.



Trees of varied kind

Some known, while some unknown

Inspired our design



# Master Plan



## LEGENDS

- |                                |   |  |
|--------------------------------|---|--|
| 1. Main Entry / Exit           | 8. Children's Play Area                 | 16. Kid's Play Area                      |
| 2. Clubhouse Entry             | 9. Tot Lot Area                         | 17. Reflexology Pathway                  |
| 3. Security Cabin (Main Entry) | 10. Outdoor Gym                         | 18. Cricket Practice Pitch               |
| 4. Security Cabin (Clubhouse)  | 11. Informal Seating Area               | 19. Pergola with Seating                 |
| 5. Clubhouse                   | 12. Tennis Court                        | 20. Clubhouse Terrace Party Area         |
| 6. Recharge Pond               | 13. Basketball Hoop                     | 21. Swimming Pool (On Clubhouse Terrace) |
| 7. Open Air Theatre            | 14. Seating Area                        | 22. Organic Waste Converter (OWC)        |
|                                | 15. 1.2m Wide Jogging / Walking Pathway |  |



- Civic Amenities
- Park & Open Spaces



## Indulge in diverse world-class amenities.

*Apart from the joy of living around trees, you will also be able to enjoy the world-class amenities that are replete at Brigade Woods.*

### INDOOR

- Indoor Badminton Court
- Table Tennis Room
- Multi-purpose Hall with Pantry Space
- Billiards
- AV Room
- Gym
- Convenience Store
- Board & Card Games Area

### OUTDOOR

- Terrace Party Area
- Rainwater Harvesting Pond
- Kid's Play Area
- Open Lawn
- Swimming Pool
- Tennis Court
- Basketball Hoop
- Pergola with Seating
- Cricket Practice Pitch
- Open Air Theatre
- Jogging Track
- Outdoor Gym
- Reflexology Path



**Tennis Court & Clubhouse**  
**Brigade Woods**





Aerial View  
Brigade Woods

Artist's impression





Entrance  
Brigade Woods

Artist's impression



Rooftop Swimming Pool  
Brigade Woods

Artist's impression





# GROUND FLOOR PLAN

## TOWERS - B, C, D, E, F, K, L, M, N & P



### SUPER BUILT-UP AREA

- **2BHK - 129.79 Sq.m. / 1397 Sq.ft.**
- **3BHK - 163.75 Sq.m. / 1763 Sq.ft.**
- **3BHK - 157.47 Sq.m. / 1695 Sq.ft.**
- **3BHK - 164.21 Sq.m. / 1768 Sq.ft.**



# FIRST FLOOR PLAN

## TOWERS - B, C, D, E, F, K, L, M, N & P



### SUPER BUILT-UP AREA

● 2BHK - 129.79 Sq.m. / 1397 Sq.ft.

● 3BHK - 163.75 Sq.m. / 1763 Sq.ft.

● 3BHK - 157.47 Sq.m. / 1695 Sq.ft.

● 3BHK - 164.21 Sq.m. / 1768 Sq.ft.



# SECOND FLOOR PLAN

## TOWERS - B, C, D, E, F, K, L, M, N & P



### SUPER BUILT-UP AREA

- 3BHK - 161.74 Sq.m. / 1741 Sq.ft.
- 3BHK - 162.73 Sq.m. / 1762 Sq.ft.


- 3BHK - 163.75 Sq.m. / 1763 Sq.ft.
- 3BHK - 164.21 Sq.m. / 1768 Sq.ft.





# THIRD AND FOURTH FLOOR PLAN TOWERS - B, C, D, E, F, K, L, M, N & P




## SUPER BUILT-UP AREA

 3BHK - 161.74 Sq.m. / 1741 Sq.ft.

 3BHK - 163.75 Sq.m. / 1763 Sq.ft.

 3BHK - 163.73 Sq.m. / 1762 Sq.ft.

 3BHK - 164.21 Sq.m. / 1768 Sq.ft.



**TYPICAL UNIT PLAN**  
1-Bedroom Unit (Type 3)



**SUPER BUILT-UP AREA**

57.75 Sq.m. / 622 Sq.ft.

**CARPET AREA**

39.24 Sq.m. / 422 Sq.ft.

The information depicted herein viz., master plans, floor plans, furniture layout, fittings, illustrations, specifications, designs, dimensions, rendered views, colours, amenities and facilities etc., are subject to change without notifications as may be required by the relevant authorities or the developer's architect, and cannot form part of an offer or contract. Whilst every care is taken in providing this information, the Developer cannot be held liable for variations. All illustrations and pictures are artist's impression only. The information are subject to variations, additions, deletions, substitutions and modifications as may be recommended by the company's architect and/or the relevant approving authorities. The Developer is wholly exempt from any liability on account of any claim in this regard. (1 square metre = 10.764 square feet). E & OE.



# TYPICAL UNIT PLAN

## 2-Bedroom Unit (Type 15)



### SUPER BUILT-UP AREA

129.79 Sq.m. / 1397 Sq.ft.

### CARPET AREA

86.18 Sq.m. / 928 Sq.ft.

### BALCONY CARPET AREA

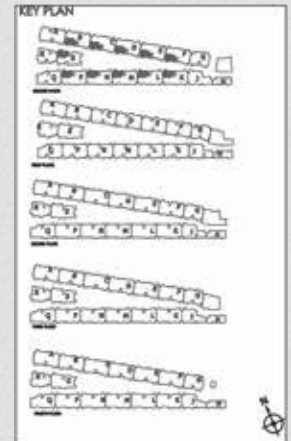
4.99 Sq.m. / 54 Sq.ft.

The information depicted herein viz., master plans, floor plans, furniture layout, fittings, illustrations, specifications, designs, dimensions, rendered views, colours, amenities and facilities etc., are subject to change without notifications as may be required by the relevant authorities or the developer's architect, and cannot form part of an offer or contract. Whilst every care is taken in providing this information, the Developer cannot be held liable for variations. All illustrations and pictures are artist's impression only. The information are subject to variations, additions, deletions, substitutions and modifications as may be recommended by the company's architect and/or the relevant approving authorities. The Developer is wholly exempt from any liability on account of any claim in this regard. (1 square metre = 10.764 square feet). E & OE.



# TYPICAL UNIT PLAN

## 3-Bedroom Unit (Type 21A)



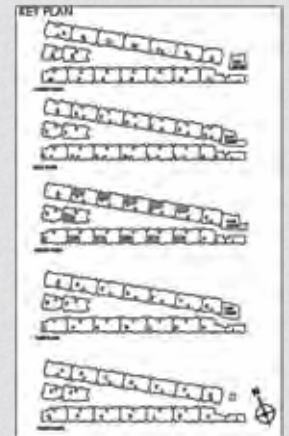
SUPER BUILT-UP AREA	CARPET AREA	BALCONY CARPET AREA
157.47 Sq.m. / 1695 Sq.ft.	103.93 Sq.m. / 1119 Sq.ft.	7.41 Sq.m. / 80 Sq.ft.

The information depicted herein viz., master plans, floor plans, furniture layout, fittings, illustrations, specifications, designs, dimensions, rendered views, colours, amenities and facilities etc., are subject to change without notifications as may be required by the relevant authorities or the developer's architect, and cannot form part of an offer or contract. Whilst every care is taken in providing this information, the Developer cannot be held liable for variations. All illustrations and pictures are artist's impression only. The information are subject to variations, additions, deletions, substitutions and modifications as may be recommended by the company's architect and/or the relevant approving authorities. The Developer is wholly exempt from any liability on account of any claim in this regard. (1 square metre = 10.764 square feet). E & OE.



# TYPICAL UNIT PLAN

## 3-Bedroom Unit (Type 24A)



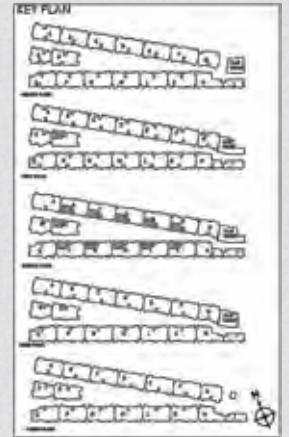
SUPER BUILT-UP AREA	CARPET AREA	BALCONY CARPET AREA
161.74 Sq.m. / 1741 Sq.ft.	106.49 Sq.m. / 1146 Sq.ft.	7.41 Sq.m. / 80 Sq.ft.

The information depicted herein viz., master plans, floor plans, furniture layout, fittings, illustrations, specifications, designs, dimensions, rendered views, colours, amenities and facilities etc., are subject to change without notifications as may be required by the relevant authorities or the developer's architect, and cannot form part of an offer or contract. Whilst every care is taken in providing this information, the Developer cannot be held liable for variations. All illustrations and pictures are artist's impression only. The information are subject to variations, additions, deletions, substitutions and modifications as may be recommended by the company's architect and/or the relevant approving authorities. The Developer is wholly exempt from any liability on account of any claim in this regard. (1 square metre = 10.764 square feet). E & OE.



# TYPICAL UNIT PLAN

## 3-Bedroom Unit (Type 26A)



SUPER BUILT-UP AREA	CARPET AREA	BALCONY CARPET AREA
163.73 Sq.m. / 1762 Sq.ft.	108.58 Sq.m. / 1169 Sq.ft.	7.41 Sq.m. / 80 Sq.ft.

The information depicted herein viz., master plans, floor plans, furniture layout, fittings, illustrations, specifications, designs, dimensions, rendered views, colours, amenities and facilities etc., are subject to change without notifications as may be required by the relevant authorities or the developer's architect, and cannot form part of an offer or contract. Whilst every care is taken in providing this information, the Developer cannot be held liable for variations. All illustrations and pictures are artist's impression only. The information are subject to variations, additions, deletions, substitutions and modifications as may be recommended by the company's architect and/or the relevant approving authorities. The Developer is wholly exempt from any liability on account of any claim in this regard. (1 square metre = 10.764 square feet). E & OE.



# TYPICAL UNIT PLAN

## 3-Bedroom Unit (Type 27A)



**SUPER BUILT-UP AREA**

163.75 Sq.m. / 1763 Sq.ft.

**CARPET AREA**

108.38 Sq.m. / 1167 Sq.ft.

**BALCONY CARPET AREA**

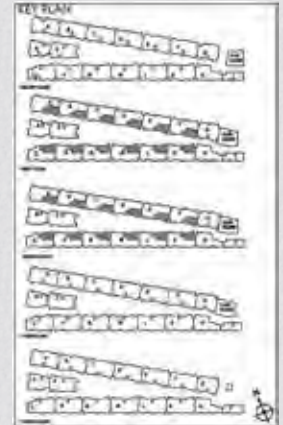
7.43 Sq.m. / 80 Sq.ft.

The information depicted herein viz., master plans, floor plans, furniture layout, fittings, illustrations, specifications, designs, dimensions, rendered views, colours, amenities and facilities etc., are subject to change without notifications as may be required by the relevant authorities or the developer's architect, and cannot form part of an offer or contract. Whilst every care is taken in providing this information, the Developer cannot be held liable for variations. All illustrations and pictures are artist's impression only. The information are subject to variations, additions, deletions, substitutions and modifications as may be recommended by the company's architect and/or the relevant approving authorities. The Developer is wholly exempt from any liability on account of any claim in this regard. (1 square metre = 10.764 square feet). E & OE.



# TYPICAL UNIT PLAN

## 3-Bedroom Unit (Type 29B)



SUPER BUILT-UP AREA	CARPET AREA	BALCONY CARPET AREA
164.21 Sq.m. / 1768 Sq.ft.	109.14 Sq.m. / 1175 Sq.ft.	7.43 Sq.m. / 80 Sq.ft.

The information depicted herein viz., master plans, floor plans, furniture layout, fittings, illustrations, specifications, designs, dimensions, rendered views, colours, amenities and facilities etc., are subject to change without notifications as may be required by the relevant authorities or the developer's architect, and cannot form part of an offer or contract. Whilst every care is taken in providing this information, the Developer cannot be held liable for variations. All illustrations and pictures are artist's impression only. The information are subject to variations, additions, deletions, substitutions and modifications as may be recommended by the company's architect and/or the relevant approving authorities. The Developer is wholly exempt from any liability on account of any claim in this regard. (1 square metre = 10.764 square feet). E & OE.



# SPECIFICATIONS

## Apartment Units - Flooring

**Living/Dining:** Large size vitrified tiles  
**Master Bedroom:** Laminate wooden flooring or vitrified tiles as option  
**Other Bedrooms:** Laminate wooden flooring or vitrified tiles as option  
**Balcony/Deck:** Outdoor patio & planter in matt finish vitrified tiles  
**Master Bedroom Toilet:** Ceramic tiles flooring and for washbasin polished granite counter  
**Other Toilets:** Ceramic tiles flooring and for washbasin polished granite counter  
**Kitchen:** Large size vitrified tiles (Same as living)  
**Utility:** Large size vitrified tiles (Same as living)

## Bathrooms

**CP Fittings:** Grohe/Kohler/Bathline/Jaquar or equivalent  
**Sanitary Fixtures:** Duravit/Kohler/Roca/Hindware/American std. or equivalent  
**Accessories - Soap tray, robe hook, toilet paper holder, towel rod:** Grohe/Jaquar or equivalent  
**Shower:** Overhead shower + telephonic hand shower and glass partition only in MBR toilet  
**Countertop Washbasin:** Duravit/Kohler/Roca/American std. or equivalent above granite counter  
**Wall mounted EWC:** Duravit/Kohler/Roca/American std. or equivalent  
**False Ceiling:** Calcium silicate boards/Sintex board

## Kitchen

**Counter:** Provision for modular kitchen  
**Plumbing/Electrical:** Plumbing and electrical point provision for water purifier, refrigerator, microwave, washing machine and dish washer. Hot & cold mixer with long body bib cock. Sink provision in kitchen area.

## Doors

**Main Entry Door:** Teak wood/hard wood frame with designer shutter  
**Bedroom Doors:** Pre-engineered frames/Pre-engineered shutters  
**Toilet Doors:** Pre-engineered frames/Pre-engineered shutter & painted  
**Utility:** Anodised aluminium/UPVC (Wherever applicable)  
**Balcony Door:** UPVC/Aluminium with bug screen 3 track  
**Shaft Door:** MS door frame with steel shutter

## Windows

UPVC/anodised aluminium with bug screen

## Paint

**Exterior:** External texture paint/scratch coat with exterior emulsion  
**Interior:**  
**Common Area:** Acrylic emulsion paint/scratch coat  
**Staircase, Utility Area and Service Area:** Oil bound distemper  
**Basement:** Oil bound distemper  
**Unit walls:** Acrylic emulsion paint  
**Internal Ceiling**  
**Common Area:** Acrylic emulsion paint  
**Staircase, Utility Area and Service Area:** Oil bound distemper  
**Basement:** Oil bound distemper  
**Unit Ceiling:** Acrylic emulsion paint - ICI Dulux  
**Steel Works:** Synthetic enamel paint - Berger/Asian Paints or equivalent  
**Woodwork:** Main door melamine polish, other doors enamel paint

## Electrical Load

1 - Bedroom Apartment: 4kW  
2 - Bedroom Apartment: 5kW  
2.5 - Bedroom Apartment: 5kW  
3 - Bedroom Apartment: 6kW  
3.5 - Bedroom Apartment: 7kW

## DG Backup

1 - Bedroom Apartment: 2kW  
2 - Bedroom Apartment: 3kW  
2.5 - Bedroom Apartment: 3kW  
3 - Bedroom Apartment: 3kW  
3.5 - Bedroom Apartment: 4kW

## Security & Automation

Intercom facility/video door phone (In living or next to main door). CCTV for common areas.





#### **Great Place To Work 2019**

Brigade was recognised as the Best Place to work in the real estate category for the 9<sup>th</sup> year in a row by Great Place to Work Institute

#### **Brigade Group**

Brigade Group received 'One of India's Top Challengers' award at the CWAB Awards 2019

Brigade Group received the 'Best Developer of the Year' award at the Times Business Awards 2019

Brigade was awarded as one of the Hot 50 Brands in Bengaluru under the Large Enterprise category at the Bengaluru Brand Summit 2018 by Paul Writer

#### **Brigade Orchards**

Won the 'Smart Township Project of The Year' award at the 6<sup>th</sup> Annual Siliconindia Bengaluru Real Estate Awards 2018

#### **Brigade Exotica**

Won the 'Best Residential Project' at the CIA World Construction & Infra Awards 2018

#### **Brigade Cornerstone Utopia**

Won the 'Integrated Township Project of the Year' award at the 11<sup>th</sup> Realty Plus Awards 2019 - South

#### **Brigade Panorama**

Won the award for Excellence in Delivery at the 11<sup>th</sup> Realty Plus Awards 2019 - South

#### **Brigade Palmgrove, Mysuru**

Won the 'Premium Villa Project of the Year' award at the NDTV Property Awards 2018

#### **Brigade Mountain View, Mysuru**

Won the award for Best Residential Dwellings above 50 units in Mysuru at the CARE Awards 2019



# MULTIPLE DOMAINS. SINGLE-MINDED COMMITMENT.

**Apartments**  
**Villas**  
**Integrated Enclaves**  
**Senior Living**



Brigade is one of India's leading developers with over three decades of experience in building positive experiences for all its stakeholders. We have transformed the city skylines of Bengaluru, Mysuru, Mangaluru, Hyderabad, Chennai, Kochi and Ahmedabad with our developments across Residential, Offices, Retail, Hospitality and Education sectors.



**Offices**  
**Retail Spaces**



Brigade's residential portfolio includes villas, villaments, penthouses, premium residences, luxury apartments, value homes, urban studios, independent living for seniors and mixed-use lifestyle enclaves & townships. Brigade is among the few developers who also enjoy a reputation of developing Grade A commercial properties. We are the license owners of the World Trade Center across South India, while our commercial spaces have top international clients operating out of them. Brigade's retail projects include Orion Mall, Orion East and Orion OMR. Brigade's hospitality offerings include star hotels, recreational clubs and convention centres, Celebrations Catering & Events and The Baking Company. Since its inception in 1986, Brigade has completed over 250 buildings amounting to 66 million sq.ft. of developed space in residential, offices, retail and hospitality sectors across 7 cities.



**Clubs**  
**Hotels**  
**Convention Centres**  
**Schools**



We have been consistently ranked among the 100 Best Places to Work in India by Great Place To Work Institute for 9 years in a row. The Group has also been socially responsible and has vastly contributed to society. This responsible attitude and innovative mind-set combined with uncompromising quality of projects over the years, has created a reputed brand.





**BRIGADE**

Building Positive Experiences

In humble  
commemoration



Founder



Awarded  
9 years in a row



---

**UPGRADE TO BRIGADE, reach us on 1800 102 9977 • email: [salesenquiry@brigadegroup.com](mailto:salesenquiry@brigadegroup.com)**

---

**Site Marketing Office:**  
Brigade Woods, ECC Road  
(Next to Brigade Tech Park,  
Behind GR Tech Park),  
Whitefield, Bengaluru

**Registered & Corporate Office:**  
29th & 30th Floor,  
WTC Bangalore@Brigade Gateway Campus,  
Dr. Rajkumar Road, Malleswaram-Rajajinagar,  
Bengaluru 560 055

**Dubai:**  
Brigade Enterprises Ltd.,  
708, Atrium Centre, Bank Street, Bur Dubai  
Ph: +971 4 355 5504 | Fax: +971 4 355 5541  
[dubaisales@brigadegroup.com](mailto:dubaisales@brigadegroup.com)

Offices also at: CHENNAI • HYDERABAD • MANGALURU • MYSURU