

GROUND FLOOR PLAN

TOWERS - B, C, D, E, F, K, L, M, N & P



SUPER BUILT-UP AREA

- **2BHK - 129.79 Sq.m. / 1397 Sq.ft.**
- **3BHK - 163.75 Sq.m. / 1763 Sq.ft.**
- **3BHK - 157.47 Sq.m. / 1695 Sq.ft.**
- **3BHK - 164.21 Sq.m. / 1768 Sq.ft.**

FIRST FLOOR PLAN

TOWERS - B, C, D, E, F, K, L, M, N & P



SUPER BUILT-UP AREA

● 2BHK - 129.79 Sq.m. / 1397 Sq.ft.

● 3BHK - 163.75 Sq.m. / 1763 Sq.ft.

● 3BHK - 157.47 Sq.m. / 1695 Sq.ft.

● 3BHK - 164.21 Sq.m. / 1768 Sq.ft.

SECOND FLOOR PLAN

TOWERS - B, C, D, E, F, K, L, M, N & P



SUPER BUILT-UP AREA

- 3BHK - 161.74 Sq.m. / 1741 Sq.ft.
- 3BHK - 162.73 Sq.m. / 1762 Sq.ft.

- 3BHK - 163.75 Sq.m. / 1763 Sq.ft.
- 3BHK - 164.21 Sq.m. / 1768 Sq.ft.

THIRD AND FOURTH FLOOR PLAN TOWERS - B, C, D, E, F, K, L, M, N & P



SUPER BUILT-UP AREA

- 3BHK - 161.74 Sq.m. / 1741 Sq.ft.
- 3BHK - 163.73 Sq.m. / 1762 Sq.ft.

- 3BHK - 163.75 Sq.m. / 1763 Sq.ft.
- 3BHK - 164.21 Sq.m. / 1768 Sq.ft.

TYPICAL UNIT PLAN
1-Bedroom Unit (Type 3)



SUPER BUILT-UP AREA

57.75 Sq.m. / 622 Sq.ft.

CARPET AREA

39.24 Sq.m. / 422 Sq.ft.

The information depicted herein viz., master plans, floor plans, furniture layout, fittings, illustrations, specifications, designs, dimensions, rendered views, colours, amenities and facilities etc., are subject to change without notifications as may be required by the relevant authorities or the developer's architect, and cannot form part of an offer or contract. Whilst every care is taken in providing this information, the Developer cannot be held liable for variations. All illustrations and pictures are artist's impression only. The information are subject to variations, additions, deletions, substitutions and modifications as may be recommended by the company's architect and/or the relevant approving authorities. The Developer is wholly exempt from any liability on account of any claim in this regard. (1 square metre = 10.764 square feet). E & OE.

TYPICAL UNIT PLAN

2-Bedroom Unit (Type 15)



SUPER BUILT-UP AREA

129.79 Sq.m. / 1397 Sq.ft.

CARPET AREA

86.18 Sq.m. / 928 Sq.ft.

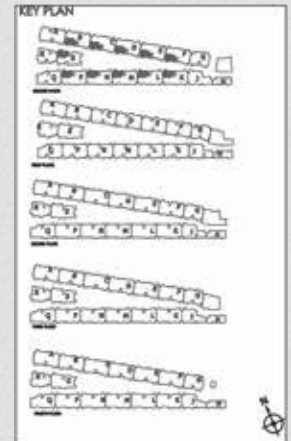
BALCONY CARPET AREA

4.99 Sq.m. / 54 Sq.ft.

The information depicted herein viz., master plans, floor plans, furniture layout, fittings, illustrations, specifications, designs, dimensions, rendered views, colours, amenities and facilities etc., are subject to change without notifications as may be required by the relevant authorities or the developer's architect, and cannot form part of an offer or contract. Whilst every care is taken in providing this information, the Developer cannot be held liable for variations. All illustrations and pictures are artist's impression only. The information are subject to variations, additions, deletions, substitutions and modifications as may be recommended by the company's architect and/or the relevant approving authorities. The Developer is wholly exempt from any liability on account of any claim in this regard. (1 square metre = 10.764 square feet). E & OE.

TYPICAL UNIT PLAN

3-Bedroom Unit (Type 21A)

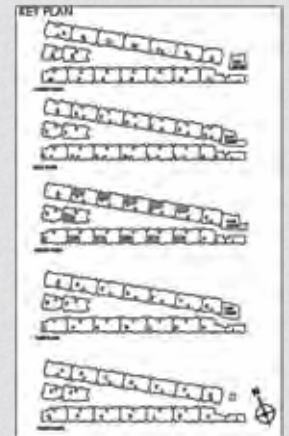


SUPER BUILT-UP AREA	CARPET AREA	BALCONY CARPET AREA
157.47 Sq.m. / 1695 Sq.ft.	103.93 Sq.m. / 1119 Sq.ft.	7.41 Sq.m. / 80 Sq.ft.

The information depicted herein viz., master plans, floor plans, furniture layout, fittings, illustrations, specifications, designs, dimensions, rendered views, colours, amenities and facilities etc., are subject to change without notifications as may be required by the relevant authorities or the developer's architect, and cannot form part of an offer or contract. Whilst every care is taken in providing this information, the Developer cannot be held liable for variations. All illustrations and pictures are artist's impression only. The information are subject to variations, additions, deletions, substitutions and modifications as may be recommended by the company's architect and/or the relevant approving authorities. The Developer is wholly exempt from any liability on account of any claim in this regard. (1 square metre = 10.764 square feet). E & OE.

TYPICAL UNIT PLAN

3-Bedroom Unit (Type 24A)



SUPER BUILT-UP AREA	CARPET AREA	BALCONY CARPET AREA
161.74 Sq.m. / 1741 Sq.ft.	106.49 Sq.m. / 1146 Sq.ft.	7.41 Sq.m. / 80 Sq.ft.

The information depicted herein viz., master plans, floor plans, furniture layout, fittings, illustrations, specifications, designs, dimensions, rendered views, colours, amenities and facilities etc., are subject to change without notifications as may be required by the relevant authorities or the developer's architect, and cannot form part of an offer or contract. Whilst every care is taken in providing this information, the Developer cannot be held liable for variations. All illustrations and pictures are artist's impression only. The information are subject to variations, additions, deletions, substitutions and modifications as may be recommended by the company's architect and/or the relevant approving authorities. The Developer is wholly exempt from any liability on account of any claim in this regard. (1 square metre = 10.764 square feet). E & OE.

TYPICAL UNIT PLAN

3-Bedroom Unit (Type 26A)



SUPER BUILT-UP AREA

163.73 Sq.m. / 1762 Sq.ft.

CARPET AREA

108.58 Sq.m. / 1169 Sq.ft.

BALCONY CARPET AREA

7.41 Sq.m. / 80 Sq.ft.

The information depicted herein viz., master plans, floor plans, furniture layout, fittings, illustrations, specifications, designs, dimensions, rendered views, colours, amenities and facilities etc., are subject to change without notifications as may be required by the relevant authorities or the developer's architect, and cannot form part of an offer or contract. Whilst every care is taken in providing this information, the Developer cannot be held liable for variations. All illustrations and pictures are artist's impression only. The information are subject to variations, additions, deletions, substitutions and modifications as may be recommended by the company's architect and/or the relevant approving authorities. The Developer is wholly exempt from any liability on account of any claim in this regard. (1 square metre = 10.764 square feet). E & OE.

TYPICAL UNIT PLAN

3-Bedroom Unit (Type 27A)



SUPER BUILT-UP AREA

163.75 Sq.m. / 1763 Sq.ft.

CARPET AREA

108.38 Sq.m. / 1167 Sq.ft.

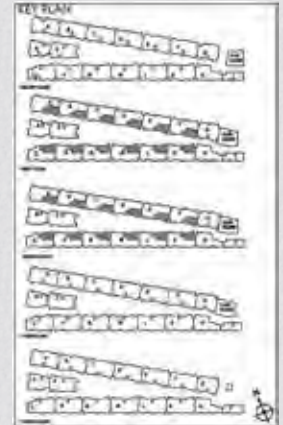
BALCONY CARPET AREA

7.43 Sq.m. / 80 Sq.ft.

The information depicted herein viz., master plans, floor plans, furniture layout, fittings, illustrations, specifications, designs, dimensions, rendered views, colours, amenities and facilities etc., are subject to change without notifications as may be required by the relevant authorities or the developer's architect, and cannot form part of an offer or contract. Whilst every care is taken in providing this information, the Developer cannot be held liable for variations. All illustrations and pictures are artist's impression only. The information are subject to variations, additions, deletions, substitutions and modifications as may be recommended by the company's architect and/or the relevant approving authorities. The Developer is wholly exempt from any liability on account of any claim in this regard. (1 square metre = 10.764 square feet). E & OE.

TYPICAL UNIT PLAN

3-Bedroom Unit (Type 29B)



SUPER BUILT-UP AREA

164.21 Sq.m. / 1768 Sq.ft.

CARPET AREA

109.14 Sq.m. / 1175 Sq.ft.

BALCONY CARPET AREA

7.43 Sq.m. / 80 Sq.ft.

The information depicted herein viz., master plans, floor plans, furniture layout, fittings, illustrations, specifications, designs, dimensions, rendered views, colours, amenities and facilities etc., are subject to change without notifications as may be required by the relevant authorities or the developer's architect, and cannot form part of an offer or contract. Whilst every care is taken in providing this information, the Developer cannot be held liable for variations. All illustrations and pictures are artist's impression only. The information are subject to variations, additions, deletions, substitutions and modifications as may be recommended by the company's architect and/or the relevant approving authorities. The Developer is wholly exempt from any liability on account of any claim in this regard. (1 square metre = 10.764 square feet). E & OE.