

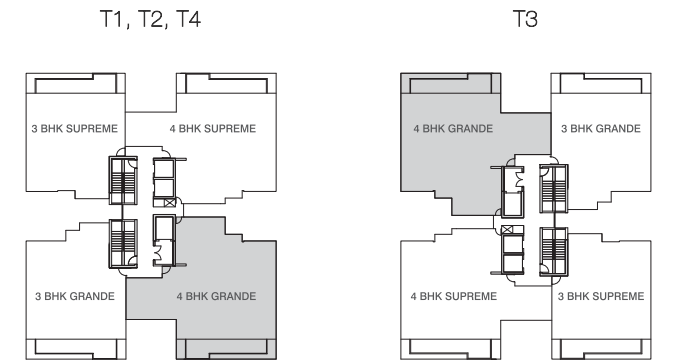




Disclaimer: This is a typical unit plan, subject to minor variations. The room measurements are mentioned in meters.

- T1: ALтура
- T2: ALTEZZA
- T3: ELANA
- T4: ALMORA

Disclaimer: Measurement are approximate and indicative subject to minor variations & final approval from authority.



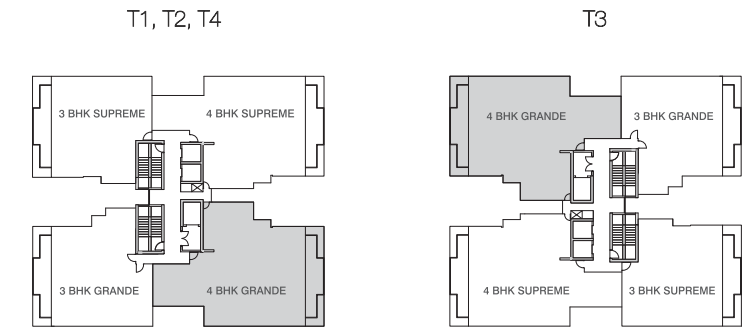
4 BHK GRANDE	: TYPE A1 (Available on all odd numbered floors)
Carpet area	: 182.995 sqm / 1969.742 sft.
Balcony area	: 28.594 sqm / 307.783 sft.
Apt. wall area	: 15.208 sqm / 163.697 sft.
Total	: 226.797 sqm / 2441.222 sft.

Areas measurements are approximate and subject to minor variations.



T1: ALтура
T2: ALTEZZA
T3: ELANA
T4: ALMORA

Disclaimer : Measurement are approximate and indicative subject to minor variations & final approval from authority.



4 BHK GRANDE	: TYPE A2 (Available on all even numbered floors)
Carpet area	: 182.995 sqm / 1969.742 sft.
Balcony area	: 28.594 sqm / 307.783 sft.
Apt. wall area	: 15.208 sqm / 163.697 sft.
Total	: 226.797 sqm / 2441.222 sft.

Areas measurements are approximate and subject to minor variations.

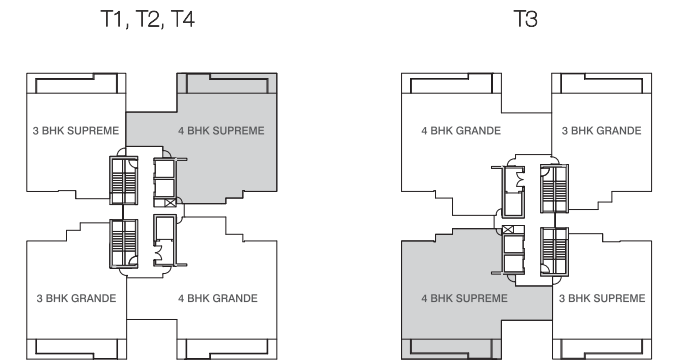
Disclaimer: This is a typical unit plan, subject to minor variations. The room measurements are mentioned in meters.



Disclaimer: This is a typical unit plan, subject to minor variations. The room measurements are mentioned in meters.

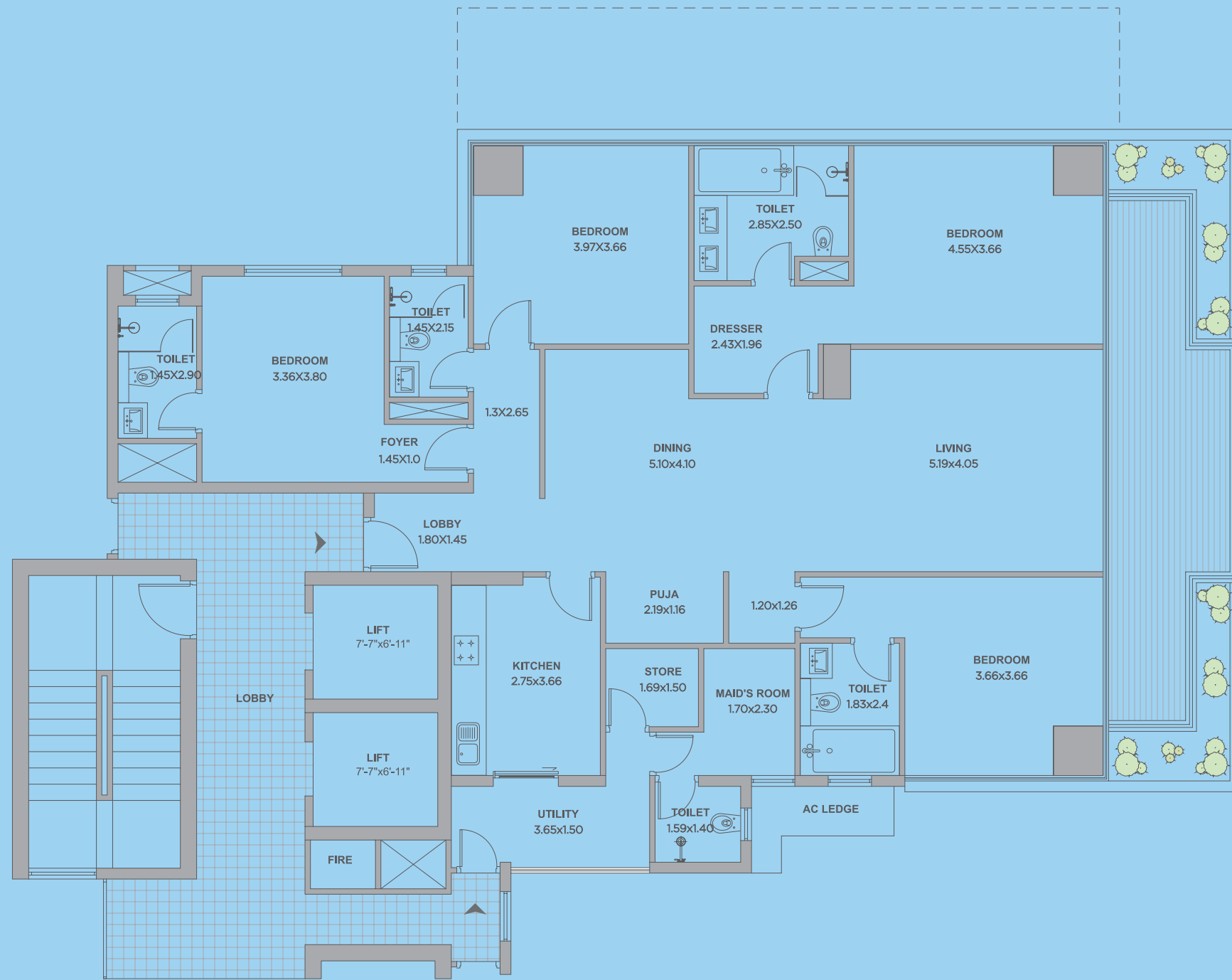
- T1: ALTURA
- T2: ALTEZZA
- T3: ELANA
- T4: ALMORA

Disclaimer: Measurement are approximate and indicative subject to minor variations & final approval from authority.



4 BHK SUPREME	: TYPE A1 (Available on all odd numbered floors)
Carpet area	: 171.301 sqm / 1843.869 sft.
Balcony area	: 28.594 sqm / 307.783 sft.
Apt. wall area	: 14.441 sqm / 155.447 sft.
Total	: 214.336 sqm / 2307.099 sft.

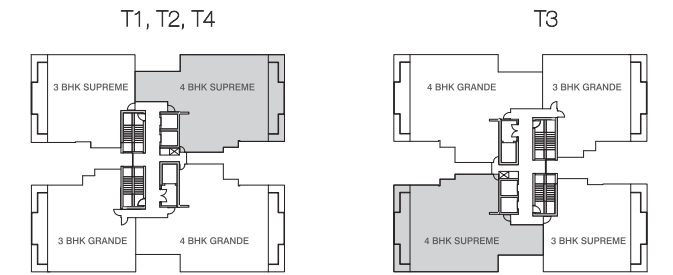
Areas measurements are approximate and subject to minor variations.



Disclaimer: This is a typical unit plan, subject to minor variations. The room measurements are mentioned in meters.

T1: ALTURA
T2: ALTEZZA
T3: ELANA
T4: ALMORA

Disclaimer: Measurements are approximate and indicative subject to minor variations & final approval from authority.



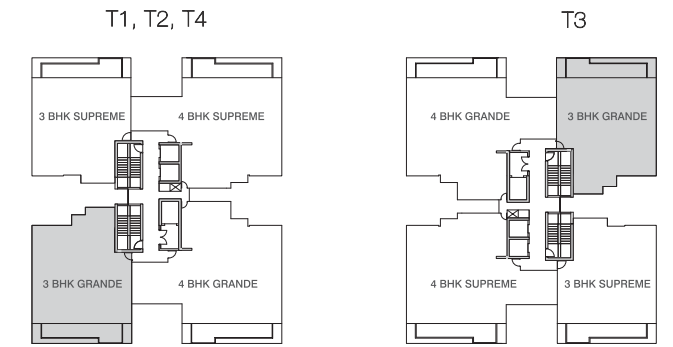
4 BHK SUPREME	: TYPE A2 (Available on all even numbered floors)
Carpet area	: 171.301 sqm / 1843.869 sft.
Balcony area	: 28.594 sqm / 307.783 sft.
Apt. wall area	: 14.441 sqm / 155.447 sft.
Total	: 214.336 sqm / 2307.099 sft.

Areas measurements are approximate and subject to minor variations.



T1: ALTURA
T2: ALTEZZA
T3: ELANA
T4: ALMORA

Disclaimer : Measurement are approximate and indicative subject to minor variations & final approval from authority.



3 BHK GRANDE

: TYPE A1 (Available on all odd numbered floors)

Carpet area

: 134.434 sqm / 1447.036 sft.

Balcony area

: 28.594 sqm / 307.783 sft.

Apt. wall area

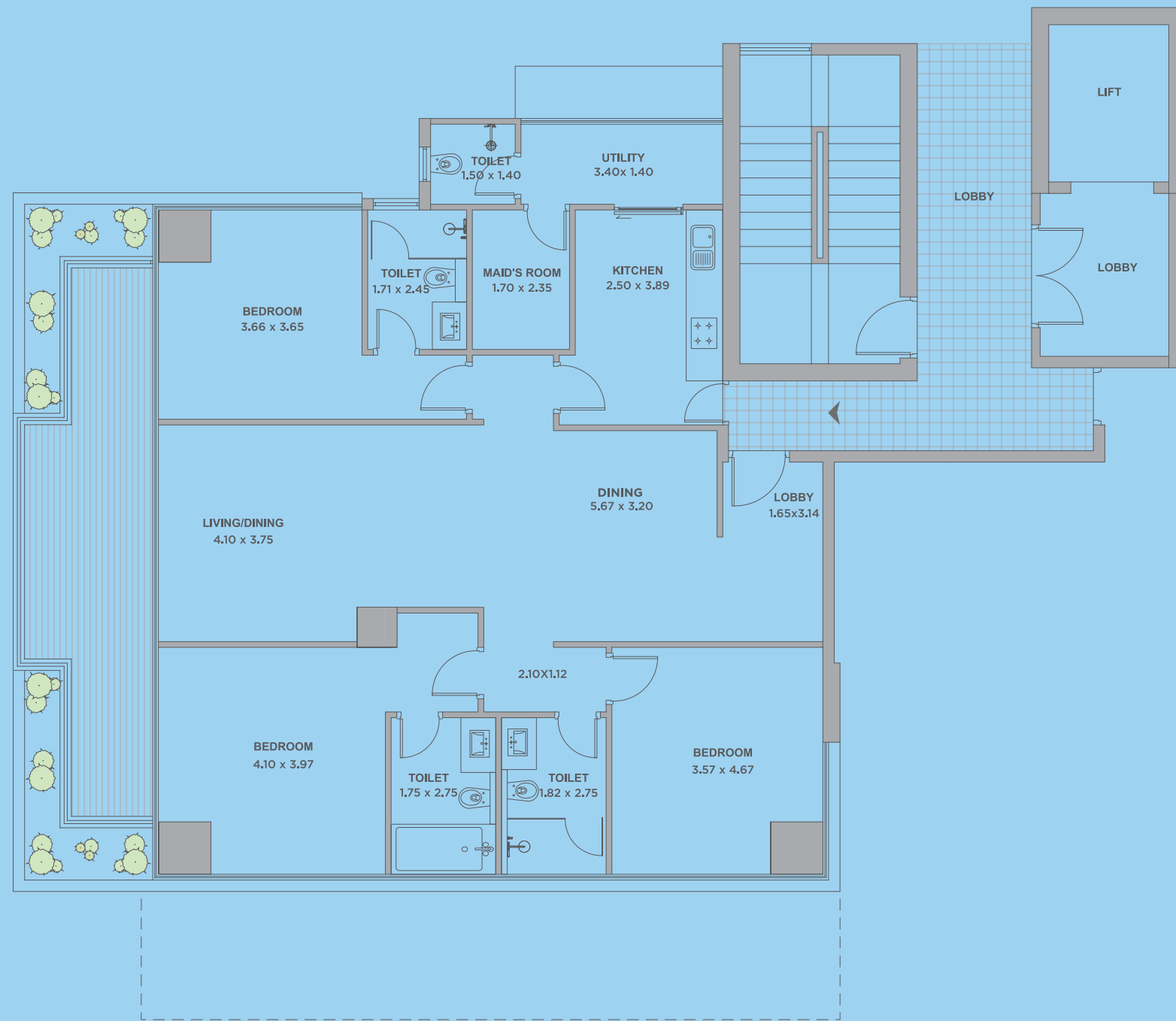
: 11.365 sqm / 122.331 sft.

Total

: 174.393 sqm / 1877.150 sft.

Disclaimer: This is a typical unit plan, subject to minor variations. The room measurements are mentioned in meters.

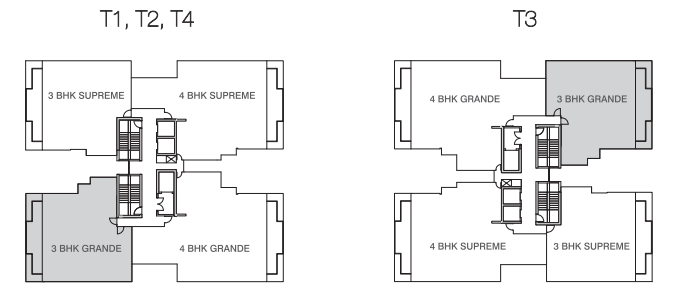
Areas measurements are approximate and subject to minor variations.



Disclaimer: This is a typical unit plan, subject to minor variations. The room measurements are mentioned in meters.

- T1: ALTURA
- T2: ALTEZZA
- T3: ELANA
- T4: ALMORA

Disclaimer: Measurements are approximate and indicative subject to minor variations & final approval from authority.



3 BHK GRANDE	: TYPE A2 (Available on all even numbered floors)
Carpet area	: 134.434 sqm / 1447.036 sft.
Balcony area	: 28.594 sqm / 307.783 sft.
Apt. wall area	: 11.365 sqm / 122.331 sft.
Total	: 174.393 sqm / 1877.150 sft.

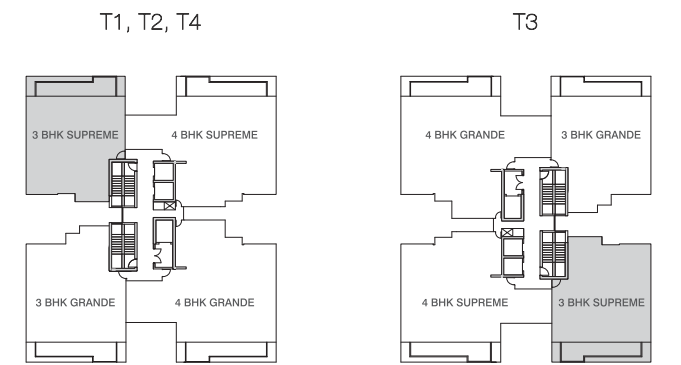
Areas measurements are approximate and subject to minor variations.



Disclaimer: This is a typical unit plan, subject to minor variations. The room measurements are mentioned in meters.

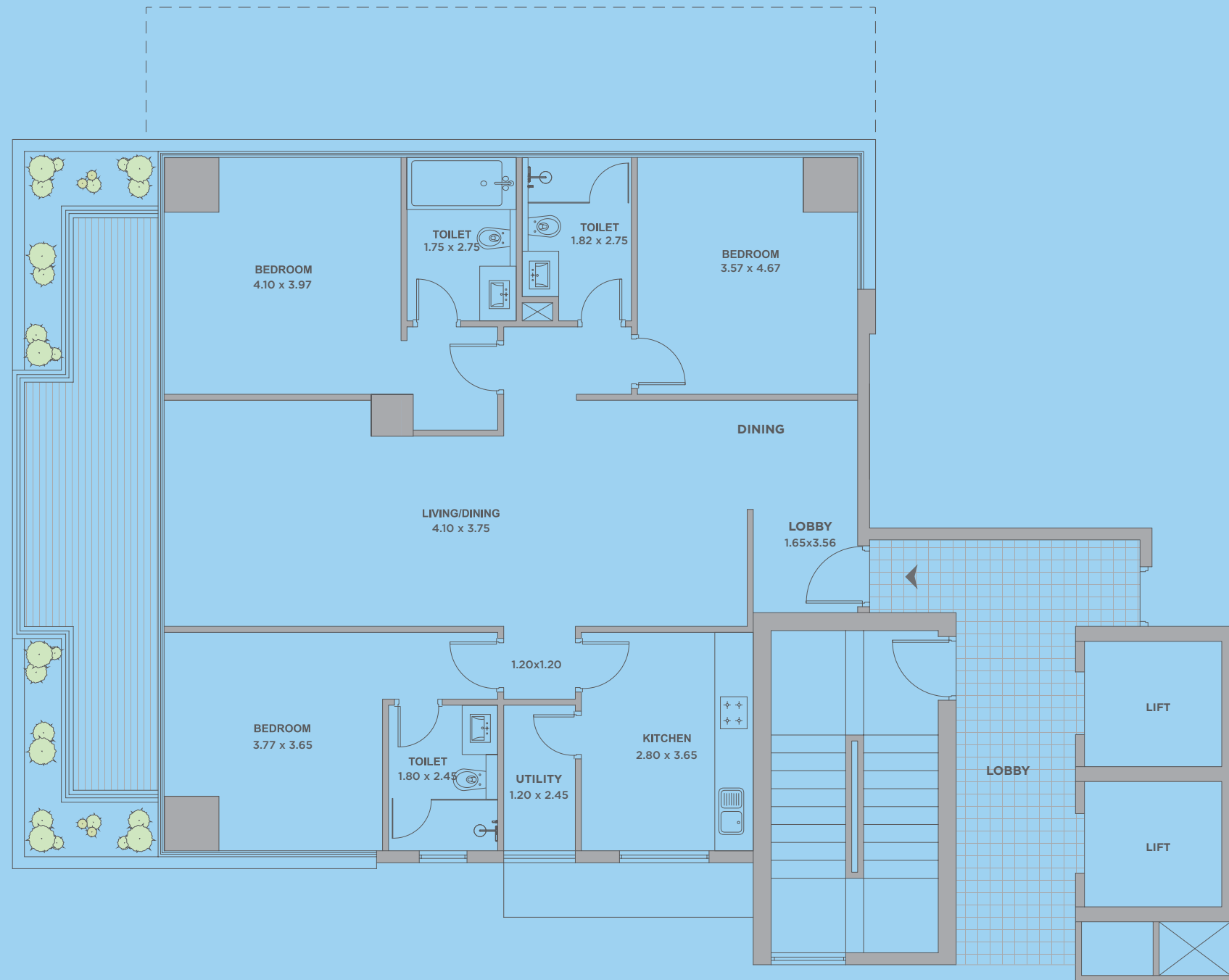
- T1: ALтура
- T2: ALTEZZA
- T3: ELANA
- T4: ALMORA

Disclaimer: Measurements are approximate and indicative subject to minor variations & final approval from authority.



3 BHK SUPREME	: TYPE A1 (Available on all odd numbered floors)
Carpet area	: 128.299 sqm / 1380.999 sft
Balcony area	: 28.594 sqm / 307.783 sft.
Apt. wall area	: 12.315 sqm / 132.557 sft.
Total	: 169.208 sqm / 1820.339 sft.

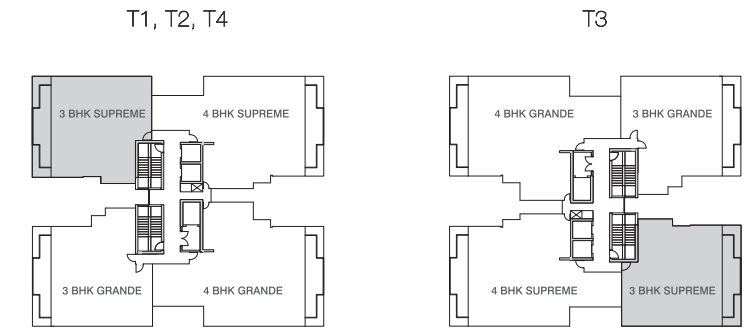
Areas measurements are approximate and subject to minor variations.



Disclaimer: This is a typical unit plan, subject to minor variations. The room measurements are mentioned in meters.

T1: ALтура
 T2: ALTEZZA
 T3: ELANA
 T4: ALMORA

Disclaimer: Measurements are approximate and indicative subject to minor variations & final approval from authority.



3 BHK SUPREME	: TYPE A2 (Available on all even numbered floors)
Carpet area	: 128.299 sqm / 1380.999 sft.
Balcony area	: 28.594 sqm / 307.783 sft.
Apt. wall area	: 12.315 sqm / 132.557 sft.
Total	: 169.208 sqm / 1820.339 sft.

Areas measurements are approximate and subject to minor variations.

ABOUT TATA HOUSING.

Tata Housing has evolved into one of the fastest growing real estate development companies in India. With the primary business being development of properties in residential, commercial and retail sectors, the company's operations span across various aspects of real estate development. The company's mission as a real estate development company is, "to delight customers by providing quality life spaces through continuous innovations."

The company is recognized for its quality construction, ethical and transparent business practices, and high standards of maintenance of properties. The company develops every property only after concentrated and focused market research to determine consumer needs and then the project is designed and implemented according to consumer preferences.

Tata Housing today has partnered with internationally acclaimed architects and design consultants. Tata Housing's projects are built to high quality specifications instantly making them landmarks. Quality has become synonymous with TATA Housing.

OUR DELIVERED PROJECTS



Aquila Heights
Jalahalli, East. Bengaluru 560 013.
Ph I - Polaris OC Received On 4-05-2011
Ph I - Vega OC Received On 23-06-2011
Ph II - Atria 2-10-2012



Eden Court
Rajarhat, Kolkata 700 156.
Ph I - T-A,B,C OC Received On 25-06-2012
Ph II - T-D,E OC Received On 19-09-2013
Ph III - Centrus Mall OC Received On 28-05-2014



Raisina Residency
Sector 59, Gurgaon 122 002.
Part 1 OC Received On 29-03-2012
Part 2 OC Received On 12-12-2013
Part 3 OC Received On 01-07-2014



Privé
Old Khandala Road, Lonavala 410 401.
Part 1 OC Received On 29-03-2013
Part 2 OC Received On 01-08-2014
Part 3 OC Received On 22-04-2015
Club House OC Received On 22-04-2015



Amantra
Kalyan-Bhiwandi Jn.
Ph I OC Received on 31-03-2016.