



BRIGADE
ORCHARDS
Devanahalli, Bangalore



Master Plan



Aspen Block:
on offer

Banyan Block:
on offer

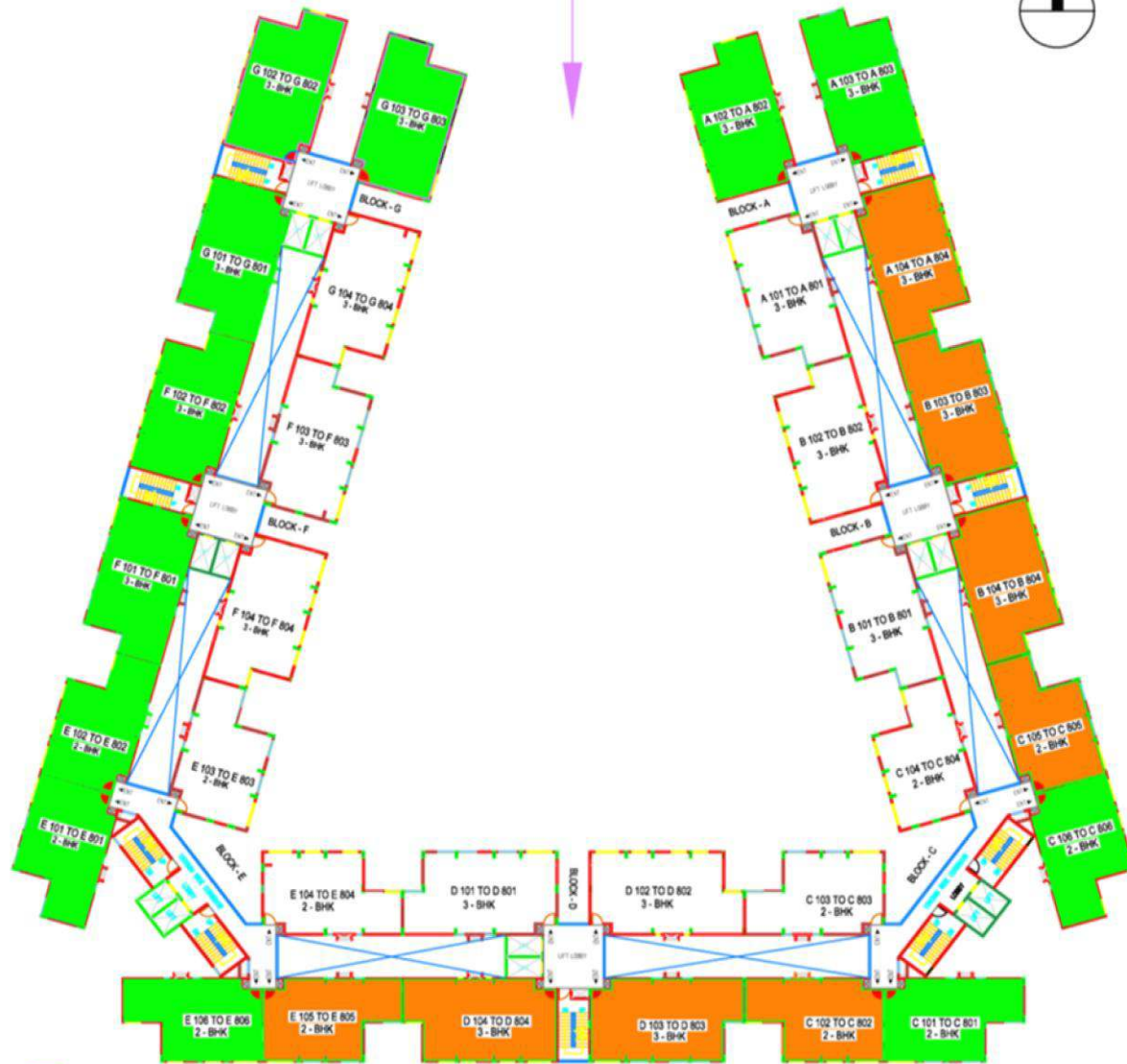
1. South Entrance
2. Pavilion Villas
3. Apartments
4. Signature Club
5. Rock Park
6. Value Plus Apartments
7. Sports Arena
8. School*
9. Neighbourhood Club*
10. Park
11. Health Centre*
12. Police & Fire Station*
13. Arts Village*
14. Office Complex
15. Retail & Multiplex
16. North Entrance from NH 207

Aspen Block Site Plan



- 01 26m wide Boulevard Road
- 02 18m wide Approach Road
- 03 Entrance/Exit
- 04 Drop off at Deck Level
- 05 Visitor Parking Area
- 06 Amphitheater
- 07 Swimming Pool
- 08 Jogging Track

ENTRY



- PREMIUM
- PREFERENTIAL LOCATION
- OTHERS

BRIGADE ORCHARDS - ASPEN

Banyan Block Site Plan



- 01 26m wide Boulevard Road
- 02 18m wide Approach Road
- 03 Entrance/Exit
- 04 Drop off at Deck Level
- 05 Swimming Pool
- 06 Jogging Track
- 07 Landscaped Park





- LEGEND :
- PREMIUM LOCATION
 - PREFERENTIAL LOCATION
 - OTHERS



ENTRY
↑

EXIT
↓

BRIGADE ORCHARDS - BANYAN



CLIENT



BRIGADE GROUP
 BRIGADE ORCHARD CENTRE,
 82, LAKSHMI NAGAR, BANGALORE 560 001
 Tel : +91-80-42279200
 Fax : +91-80-22270704

A JOINT VENTURE OF BRIGADE ENTERPRISES LTD. WITH CLASSIC & VILMARI

PRIME CONSULTANT



Surbana International Consultants (India) Pvt. Ltd.
 10/1 5, 3rd floor 8th Cross 8-3-119/9
 Indiranagar, Bangalore
 International 91-80-25471000
 Tel : +91-80-25471023, 25471028
 Fax : +91-80-25471024
 www.surbana.com

PLANNING | ARCHITECTS | ENGINEERS | QUALITY SUPERVISORS | PROJECT MANAGERS

PROJECT TITLE

**BRIGADE ORCHARDS - ASPEN & BANYAN
 AT DEVANAHALLI,
 BANGALORE, KARNATAKA .**

NOTE:

1. FURNITURE SHOWN ARE INDICATIVE ONLY AND DO NOT FORM THE PART OF THE CONTRACT.
2. DIMENSION SHOWN ARE WALL TO WALL EXCLUSIVE OF FINISHES.
3. DO NOT SCALE THE DRAWING.
4. 1m = 3.28ft



CLIENT



BRIGADE GROUP
HEAD OFFICE: BRIGADE CENTRE,
82, LAKSHMI NAGAR, BANGALORE 560 001
Tel : +91-80-41376000
Fax : +91-80-22210754

A JOINT VENTURE OF BRIGADE ENTERPRISES LTD. WITH CLASSIC & VALMARK

PRIME CONSULTANT



Surbana International Consultants (India) Pvt. Ltd.
Unit 5, 3rd floor B-5, Taranga 8-3-1109/5,
Tundakurthy, Bangalore
International 500 716 India
Tel : +91-80-23417123, 23417125
Fax : +91-80-23417124
www.surbana.com

PLANNING | ARCHITECTURE | ENGINEERING | QUALITY SUPERVISION | PROJECT MANAGER

PROJECT TITLE

BRIGADE ORCHARDS - ASPEN & BANYAN
AT DEVANAHALLI,
BANGALORE, KARNATAKA .

NOTE:

1. FURNITURE SHOWN ARE INDICATIVE ONLY AND DO NOT FORM THE PART OF THE CONTRACT.
2. DIMENSION SHOWN ARE WALL TO WALL EXCLUSIVE OF FINISHES.
3. DO NOT SCALE THE DRAWING.
4. 1m = 3.28ft.

Specifications



1. STRUCTURE

- Seismic Zone II compliant RCC Framed structure
- Precast concrete panels for walls
- All internal walls are smoothly plastered
- One staircase in each tower

2. PAINTING / POLISHING

- Interior walls : Oil bound distemper / emulsion paint
- Exterior : Exterior textured point /Cement point
- Ceiling : Oil bound distemper
- Enamel point for metal work / doors

3. LIFTS

- Two passenger lifts in each tower
- Elegant floor lobbies with flooring/cladding in vitrified tiles / natural stone

4. WATER SUPPLY / PLUMBING

- Rain water harvesting
- Sewage Treatment Plant (STP) and Water Treatment Plants
- All plumbing lines will be pressure tested
- Sewerage lines will be of CPVC
- Underground sumps and overhead tanks with adequate storage capacity

5. ELECTRICAL

- Fire resistant electrical wires
- Elegant modular electrical switches
- For safety, one earth leakage circuit breaker (ELCB) in every apartment
- One miniature circuit breaker (MCB) for each circuit at the main distribution box in every apartment
- One TV point each in the living room and master bedroom
- Power back up for every apartment, 1 KW for each apartment.
100% back-up for common areas
- One telephone point each in living room and master bedroom.
- Provision for one A/C point in master bedroom.
- Adequate light points and power points in every room.

6. DOOR / WINDOWS

- Main Door : Hard Wood door frame with designer door shutters
- Hardwood door frames with flush shutter for bedrooms / toilets
- Anodised / powder coated aluminum two-track sliding window shutters with plain glass
- Chrome hardware with night latch and magic eye for main door

7. FLOORING

- Vitrified tiles for living, dining and bedrooms & kitchen / utility area
- Anti-skid ceramic tiles for all toilets & balcony.

8. KITCHEN / UTILITY

- Cladding with glazed tiles above the kitchen platform (2 feet height)
- Granite kitchen platform with stainless steel sink & drain board
- Water purifier point in kitchen
- Washing machine point in utility area

9. TOILET

- Wall mounted wash basin in all toilets
- Glazed ceramic tiles dado up to false ceiling in shower area & 4 feet in rest of toilet
- Floor mounted EWC with flush tank in all toilets
- Hot and cold water mixer unit for shower in all toilets
- Geyser Provision for all toilets
- Provision for exhaust fan
- Sanitary ware will be Parryware / Equivalent
- CP fittings will be Jaquar or equivalent

10. AMENITIES

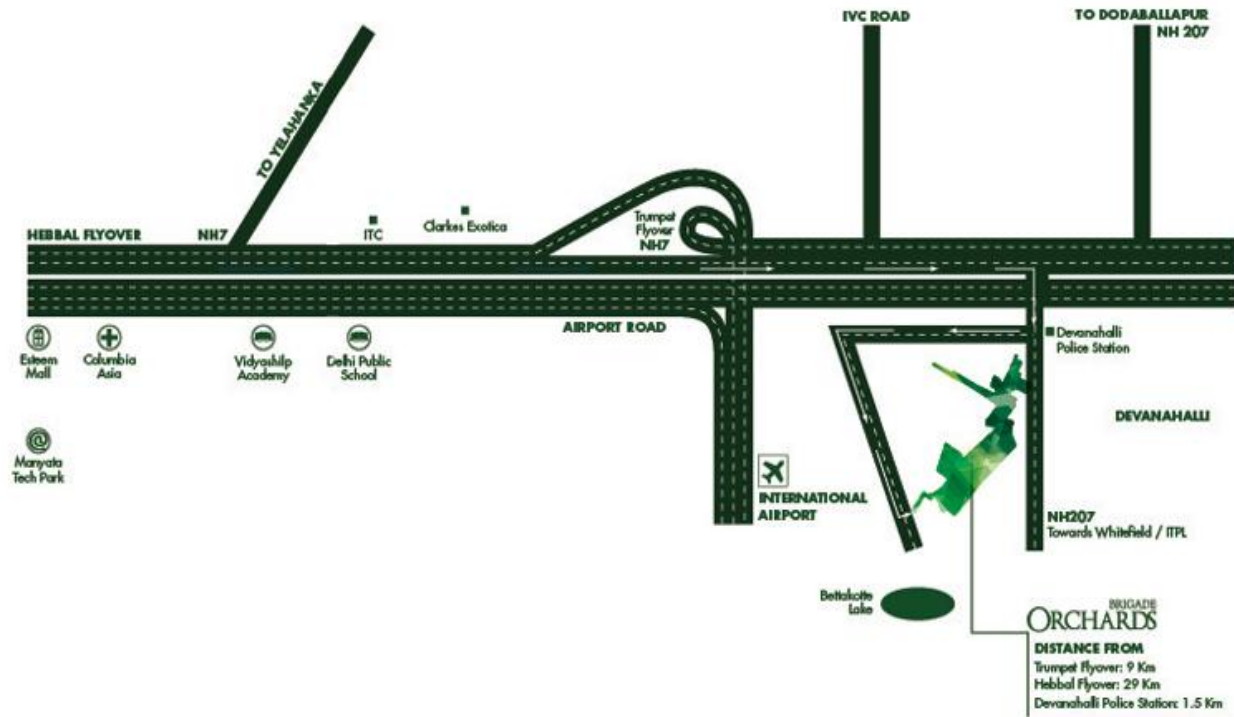
- CLUB HOUSE with following facilities
- Swimming pool
- Multipurpose hall (indoor games , library etc)
- Gym / aerobics
- Aerobics / yoga terrace
- Amphitheater
- Jogging track
- Children's' play areas

11. COMMON FACILITIES

- 24/7 Security
- Lush tropical landscaping
- Cycling & walking trails
- Shuttle service up to trumpet flyover
- School, sports facilities, medical facilities, police station, fire station, art village, hypermarket, etc. planned on campus



Directions to your Value Plus Apartment



BRIGADE ORCHARDS
DISTANCE FROM
Trumpet Flyover: 9 Km
Hebbal Flyover: 29 Km
Devanahalli Police Station: 1.5 Km

*This map is not to scale. ESOE