

[www.mantri.in](http://www.mantri.in)



# Your home amidst nature



manTRI

# Alpyne

Uttarahalli

+91 8470930121 | [www.abcbuidcon.in](http://www.abcbuidcon.in)



## High Points

- ▲ Strategically located close to Banashankari, Shopping Centres, educational institutes and hospitals.
- ▲ Georgian Townhouse styled mid rise residential units with brick facades and tiled roofs.
- ▲ Well equipped clubhouse with host of amenities with interiors designed by International Architects.
- ▲ Natural garden setting with undulating pathways in the woods, sweeping grass mounds, still water pools, spouts, rock boulders and a rustic plant palette.
- ▲ Beautifully Landscaped gardens with water bodies.
- ▲ Beach edge wading pool with sand bed.
- ▲ Mini forest.

## Clubhouse Amenities

- ▲ Well equipped Gymnasium.
- ▲ Separate health club for ladies & gents with steam, sauna and massage rooms
- ▲ Badminton / Squash court
- ▲ Table Tennis / Pool / Billiards Table
- ▲ Chess, Carrom and other indoor games
- ▲ Gaming zone

### OTHER AMENITIES

- ▲ Multi purpose hall with landscape terrace
- ▲ TV room
- ▲ Aerobics / Yoga / Dance floor / Karaoke
- ▲ Unisex parlour / Convenience Store
- ▲ Creativity room / Library
- ▲ ATM / Crèche / Telemedicine

# Landscape Plan



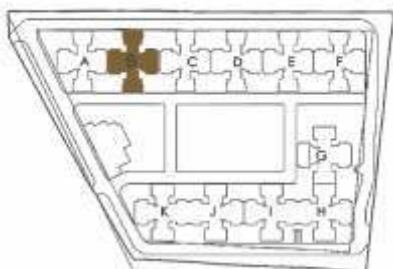
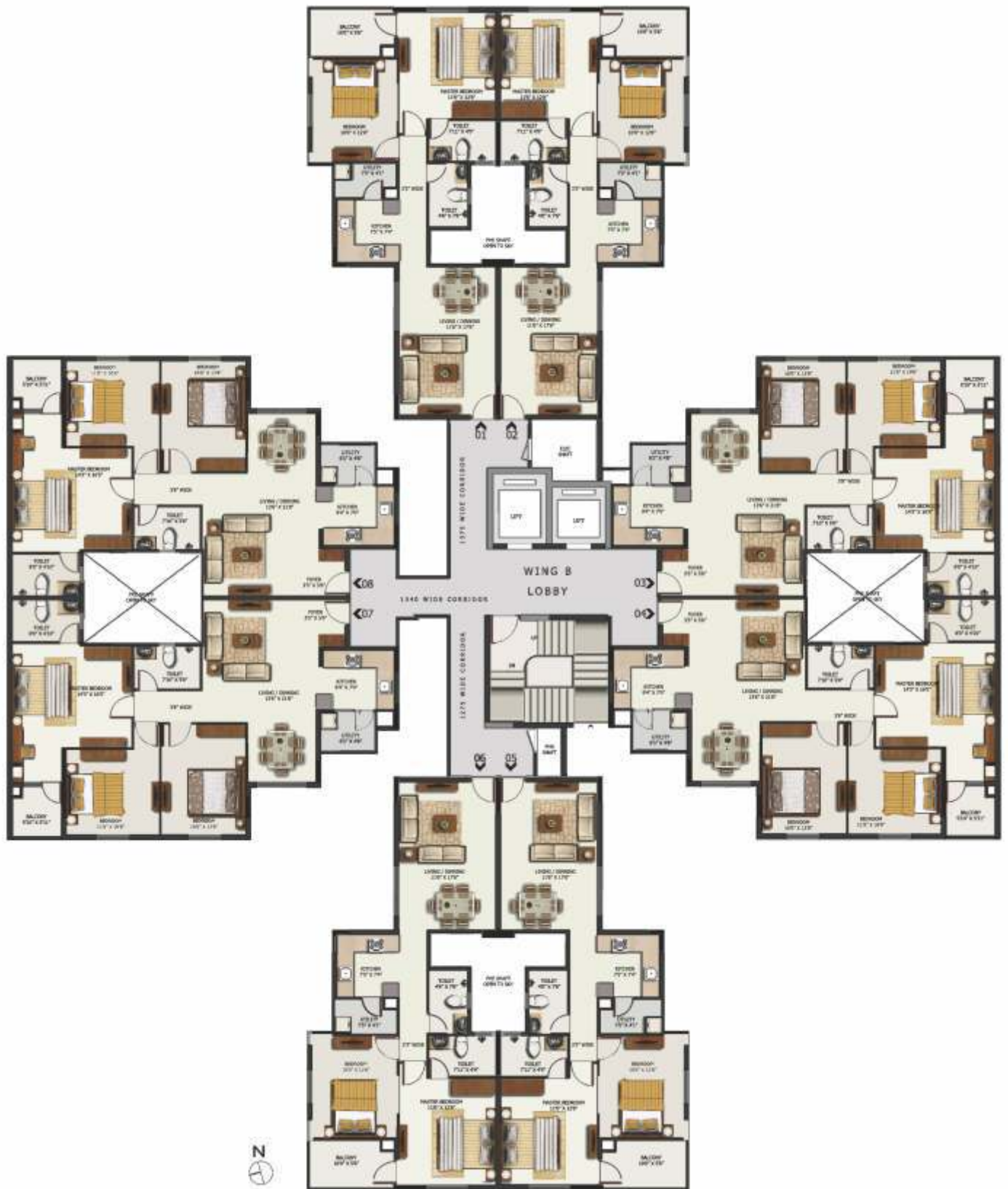
**LEGEND:**

- 01. Arrival Plaza
- 02. Supermarket & ATM Entry
- 03. Waiting Area
- 04. Exit Court
- 05. Blocks' Entrance Courts
- 06. Green Courts
- 07. Clubhouse Entry with Palm Court
- 08. Amphl Lawn
- 09. Stramp
- 10. Swimming Pool and Upper Deck
- 11. Beach Edge Wading Pool with Sand Bed
- 12. Seating Promenade
- 13. Central Lawn
- 14. Podium Edge
- 15. Tree Planter with Seating
- 16. Internal Block Entrance Courts
- 17. Viewing Pavilions
- 18. Ramp to Earth Level
- 19. Arbor Deck
- 20. Jogging Track
- 21. Earth Mounds
- 22. Boulder Garden
- 23. Net Court
- 24. Amphitheater
- 25. Lazy Nook
- 26. Barbeque Pit
- 27. Meditation Court under Ficus tree with Lily Pool
- 28. Treehouse and sand pit near Mango tree
- 29. Basketball Hoop
- 30. Multipurpose Play field
- 31. Laughter Court
- 32. Driveway

# Typical Floor Plan Block A



# Typical Floor Plan Block B



Individual Floor Plan - 2 BHK  
Area- 970 Sq Ft



Individual Floor Plan - 3 BHK  
Area- 1250 Sq Ft



# THE ADDRESS



Location / Landmark	Distance (Km)
MG Road (CBD)	13.00
Railway Station	10.00
Outer Ring Road	3.00
Nice Corridor	4.00
Mysore Road	3.00
Rajarajeshwari Nagar	1.00
Kengeri	4.00
BGS Global Hospital	3.00
Banashankari BDA Complex	6.00



# mantri

## MANTRI DEVELOPERS PVT. LTD.

Head office: Mantri House,  
#41, Vittal Mallya Road, Bangalore - 560 001.  
Ph.: +91-80-4130 0000, e-mail: [homes@mantri.in](mailto:homes@mantri.in)

Project office: Mantri Alpyne,  
Uttarahalli Village, Uttarahalli Hobli,  
Banashankari 5th stage,  
Bangalore South Taluk, Bangalore - 560 061.

e-mail: [alpyne@mantri.in](mailto:alpyne@mantri.in)  
SMS: alpyne to 56767

Chennai: e-mail: [Chennai@mantri.in](mailto:Chennai@mantri.in)  
Hyderabad: e-mail: [Hyderabad@mantri.in](mailto:Hyderabad@mantri.in)  
Pune: e-mail: [Pune@mantri.in](mailto:Pune@mantri.in)  
Dubai: e-mail: [Dubaisales@mantri.in](mailto:Dubaisales@mantri.in)

 **Dubai: Tel: +974-358-4305**  
**Mob: +97150 549 3824**

[www.mantri.in](http://www.mantri.in)

 **1800-121-0000**



Mantri Developers Pvt. Ltd.. First developer in India to be certified on 'World Class Management Systems'.  
ISO 9001:2008, ISO 14001:2004, OHSAS 18001:2007 & SA 8000:2008".

This brochure is conceptual in nature and not by any means a legal offering.  
The promoters reserve the right to change, delete or add any specifications or plans mentioned herein.

**+91 8470930121 | [www.abcbuildcon.in](http://www.abcbuildcon.in)**