



manTRI

# manTRI-GLOBAL HEIGHTS

WHITEFIELD, BENGALURU

# manTRI-GLOBAL HEIGHTS

Located off Whitefield, near Safal Market Bengaluru, Mantri Global Heights offers 2, 3 BHK Ready-to-move-in Homes with many amenities.

Here, we have thoughtfully crafted each feature that will suit your needs.

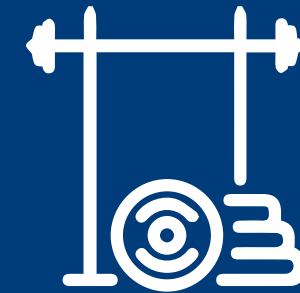
## AMENITIES



SWIMMING POOL



MULTIPURPOSE HALL



GYMNASIUM



GAMES ROOM



KID'S PLAY AREA



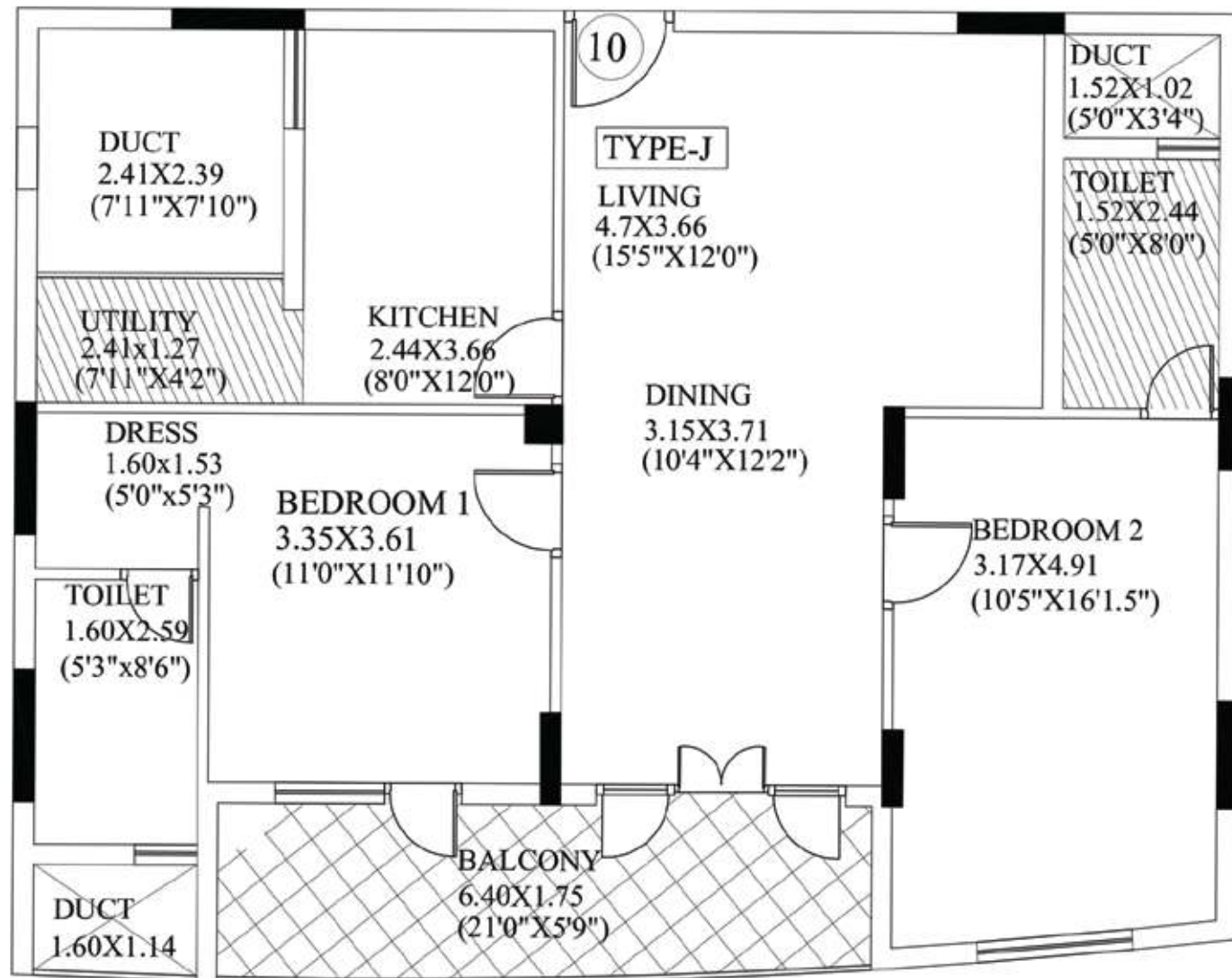
# LANDSCAPE PLAN

① Entry Point



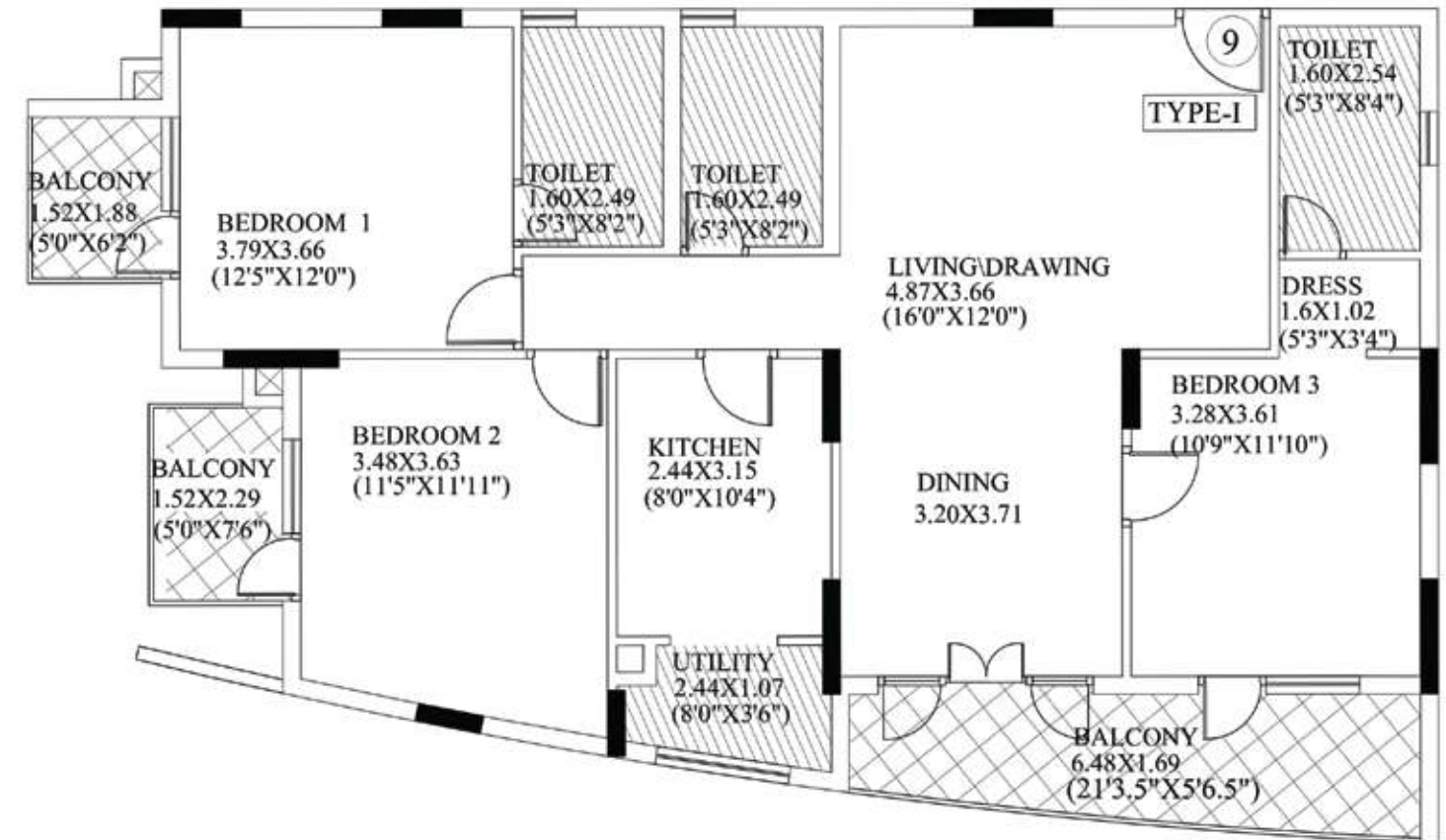


## 2 BHK INDIVIDUAL FLOOR PLAN



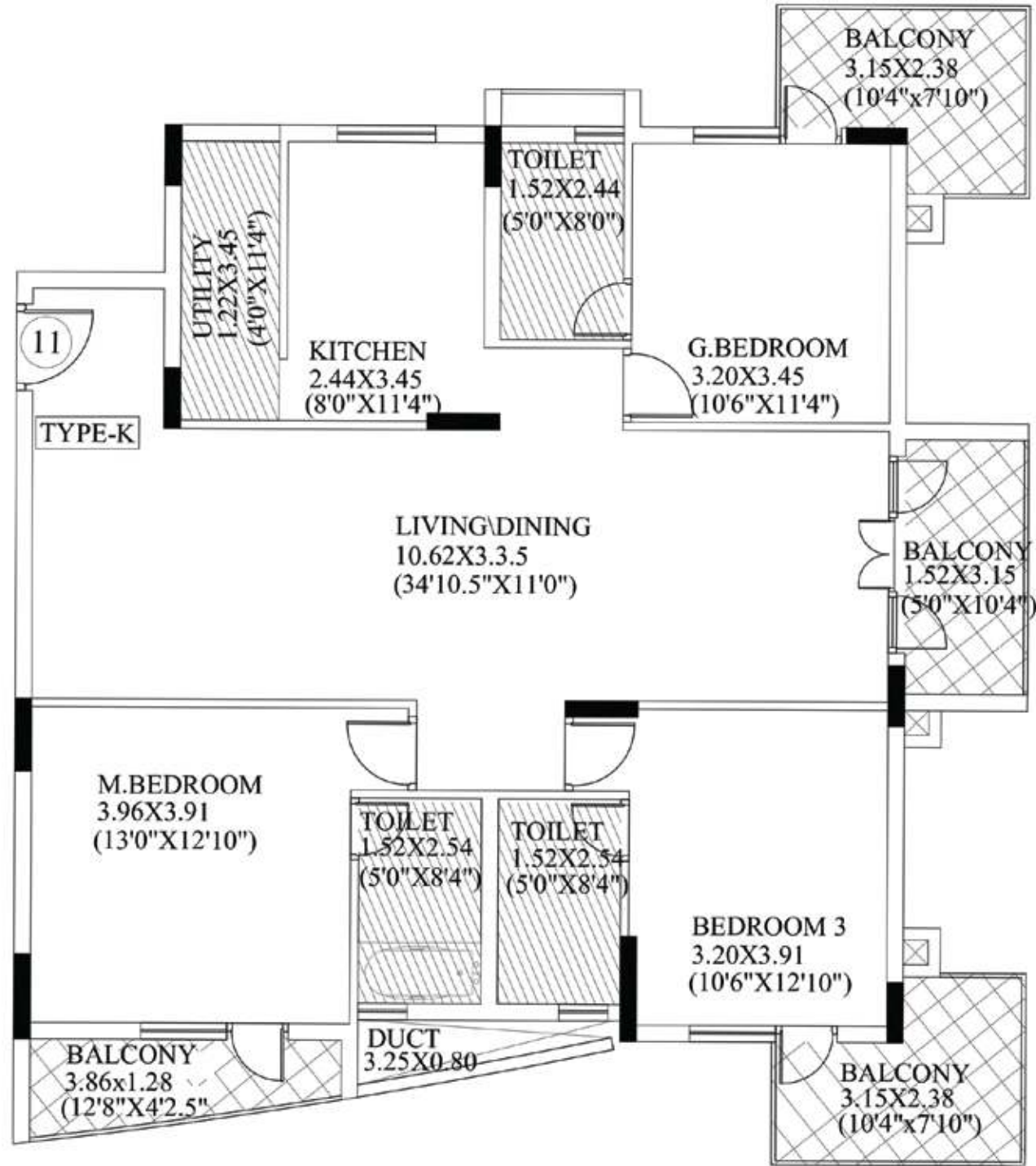
All dimensions mentioned above are in meter & feet

## 3 BHK INDIVIDUAL FLOOR PLAN



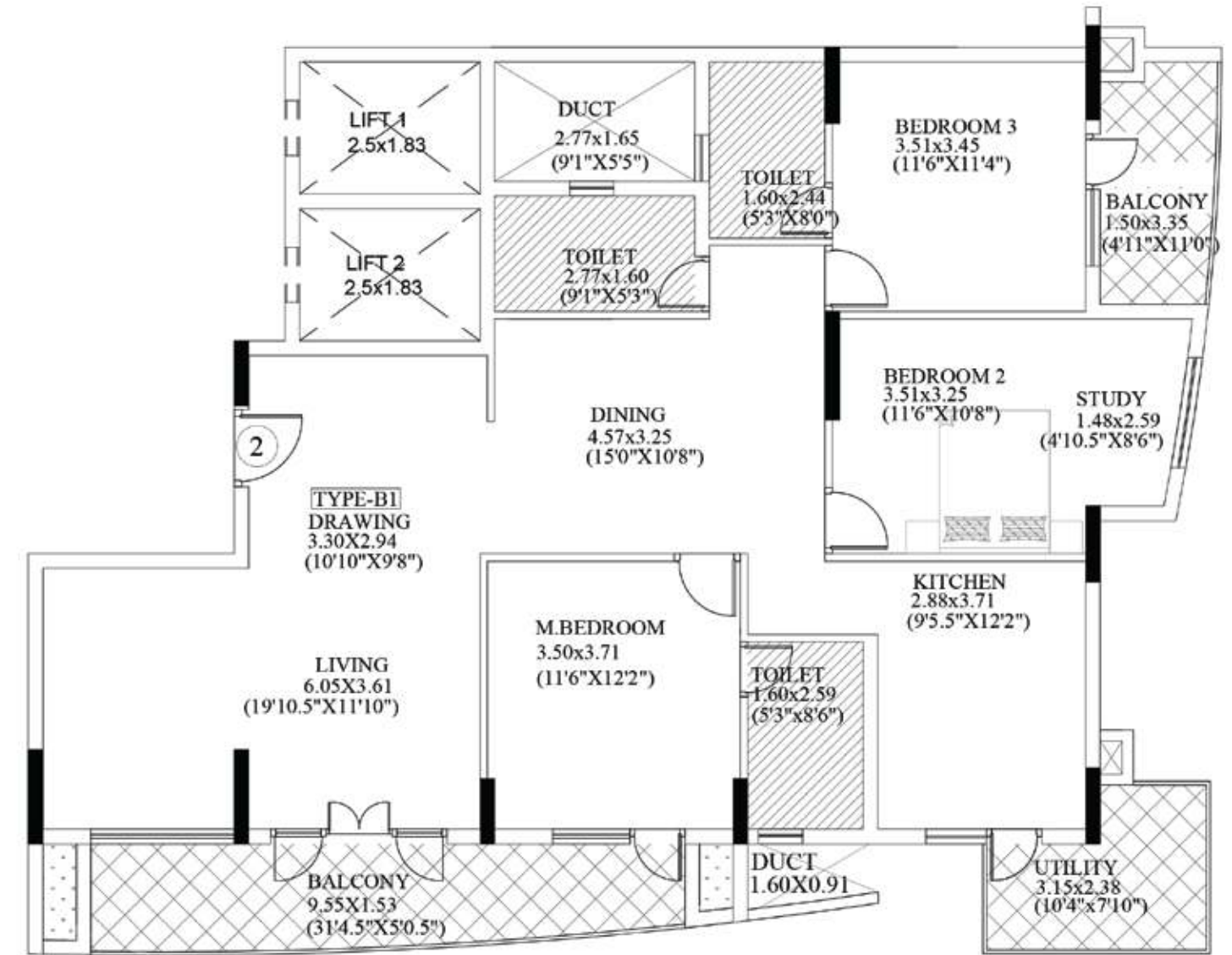
All dimensions mentioned above are in meter & feet

### 3 BHK INDIVIDUAL FLOOR PLAN



All dimensions mentioned above are in meter & feet

### 3 BHK INDIVIDUAL FLOOR PLAN



All dimensions mentioned above are in meter & feet

## **STRUCTURE:**

- Earth quake resistant RCC framed structure with concrete blocks, masonry and cement plastering

## **PAINTING:**

- Exterior paint-Finished with Exterior Emulsion paint
- Interior - Finished with plastic Emulsion paint

## **FLOORING:**

- Living/Dining/Kitchen/Bedrooms - Vitrified tiles flooring
- Toilet, Utility & Balconies -Ceramic tiles flooring

## **DOORS:**

- Wooden door or MS door with hardware

**WINDOWS/BALCONY DOOR/VENTILATORS:** UPVC/equivalent

**RAILINGS:** Mild Steel grills for windows and ventilators for all apartments

**KITCHEN:** Provision for water purifier, washing machine, dishwasher

**BEDROOM & LIVING ROOM:** TV point provided in each bedroom and living room

**MINIATURE CIRCUIT BREAKER & EARTH LEAKAGE CIRCUIT BREAKER:** Provided

**AC POINT:** Provision in master bedroom

**LIFTS:** Two automatic passenger lift of reputed make for each block

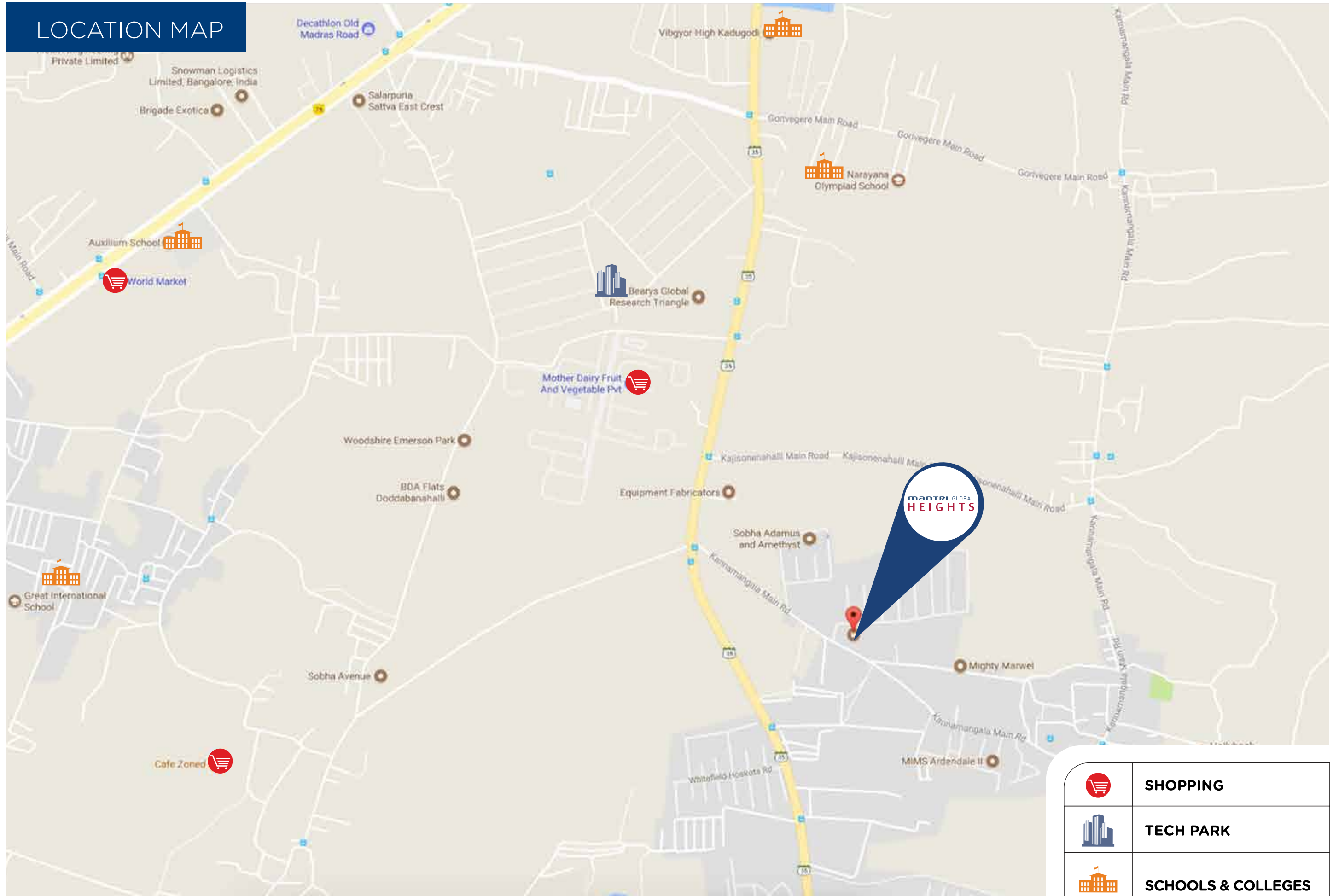
**CLUBHOUSE:** Provided




## **LANDSCAPE:**

- Entrance plaza
- Beautifully Landscaped gardens
- Paved garden walk
- Fountain with central plaza



# LOCATION MAP



	<b>SHOPPING</b>
	<b>TECH PARK</b>
	<b>SCHOOLS &amp; COLLEGES</b>

N  
Map not to scale



**mantri**

**Head Office:** Mantri House,  
#41, Vittal Mallya Road, Bengaluru - 560 001

**Project Office:** Mantri Global Heights,  
Whitefiled, Bengaluru

**e-mail:** enquiry@mantri.in

**Singapore Office:**  
101 Cecil Street, #09-06, Singapore-069533  
T : +65-6226-2352

**Dubai Office:**  
#209, Avenue Building, Opp. Burjuman Centre,  
PO Box-25390  
T : +9714-358-4305

**USA Office:**  
Suite: 320, 3375, Scott Blvd, Santa Clara, CA-95054  
T : +1-669-292-7518

 **1800-121-0000**  
**www.mantri.in**



**Mantri Developers**

Bengaluru | Chennai | Hyderabad | Pune  
First Developer in India to be certified on  
'World Class Management Systems'. ISO 9001:2008

**DISCLAIMER:**

Mantri Developers Private Limited ("MDPL" which term includes, where the context admits, its subsidiaries, group companies, associates, affiliates, advisors and consultants) does not warrant, represent or undertake in any manner whatsoever the accuracy, correctness, adequacy, completeness or suitability of the products, services, information and other content contained in this brochure/advertisement/marketing material and hereby expressly disclaims liability for errors or omissions in respect of the same. We draw your attention specifically that the information set out in this brochure/advertisement/marketing material/booking form/allotment letter/price list or any other forms, including the computer generated/rendered images and graphics, information contained in any webpage, website directly hosted or hosted or published by any of the marketing associates, brokers, channel partners or anyone associated with us are for information purpose only. While we have taken steps to ensure that all information and material set out herein are accurate and up to date, you are requested to undertake independent due diligence and verification of the authenticity of the information provided herein, before relying on the same. Nothing except those contained in the Agreements shall be relied for making your decisions. Please also note that the designs and specifications are subject to change and are only for representational purposes. The information on this brochure/advertisement/marketing material shall not be construed as an advertisement or offer for sale. By using this brochure/advertisement/marketing material booking form/allotment letter/price list or any other forms the reader agrees with the Disclaimer without any qualification or limitation and in no event shall MDPL assume liability for any loss or damage of what so ever nature, in connection with the use of the information contained herein. "This shall not be treated as a representation by MDPL of the material contained herein for the purpose of sale of any of its products or services. Please refer to the Sale Agreement/Construction Agreement for specific and binding representations" The Agreement contents supersede the representations if any made herein. Please refer to the Agreement terms and the project details provided on the RERA website.