



manTRI

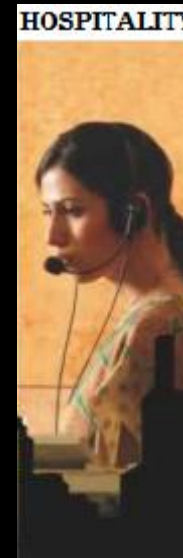
Mantri Developers

Bangalore | Chennai | Hyderabad | Pune



mantri

About Us



- Mantri Developers Pvt. Ltd. , one of India's leading Real Estate Company was founded by Mr. Sushil Mantri in the year 1999
- The company is focused on the development of residential sector, retail, hospitality, IT Parks and educational institutions in Bangalore, Chennai, Hyderabad and Pune



mantri

Our Values



Values

THAT REPRESENT OUR WORTH.

Punctuality



Quality



Reliability



Speed



Transparency



Our Icons



mantri

Mantri Altius

- First Project completely sold by Invitation only
- Winner of the CNBC Crisil award for India's best residential property in 2007



Mantri DSK Pinnacle



- South India's Tallest Residential Tower
- 46 storey accommodating 133 luxury homes
- First project with Aqua Gym in India
- Sky Observatory on the 42nd floor
- First residential project to have a sky observatory
- Smart homes for Smart people™ – Powered by Cisco

Mantri Espana



- 339 Super Luxury Homes; Rich with Mediterranean landscape and glamorous amenities
- Smart homes for Smart people™– Powered by Cisco

manTRI | MANYATA

LITHOES

Inside Manyata Tech park, Hebbal

Location USPs

Easy Accessibility:

- Located inside Manyata Tech Park.
- Outer Ring Road joins BIAL towards the north and joins Bangalore city towards the south
- Well connected to city's business districts, educational institutions and shopping areas.



Landmarks:

- Schools of national and international repute are in close vicinity.
- Columbia Asia Hospital within 3 kms.
- Mere 8 kms from M G Road and CBD areas.

High Points

- ✓ New Iconic Structure
- ✓ Distinctive Angular form of the building compliments the name Lithos, meaning Rocky edges.
- ✓ Naturally ventilated & well lit Designer Apartments with Contemporary looks, designed by International Architects.
- ✓ Each core plate has four units with two units overlooking the landscaped internal courtyard and other two units gets the vanishing view of neighboring urban green.
- ✓ Green Building features.
- ✓ One of its kind of high end clubhouse which is literally submerged with green/landscaped roof.
- ✓ Undulating roofscape with terrace penthouses.



mantri

Landscape Plan



LEGEND

- 01 MAIN ENTRY
- 02 ENTRANCE WATER BODY
- 03 CHILDREN'S PLAY AREA
- 04 PAVILION
- 05 STONE/CONCRETE SEATER
- 06 BASKET BALL PRACTICE COURT
- 07 OUT DOOR GYM
- 08 MULTIPURPOSE COURT
- 09 PATHWAY ALONG DRIVEWAY
- 10 JOGGING TRACK
- 11 SWIMMING POOL
- 12 KIDS' POOL
- 13 JACUZZI
- 14 POOL DECK
- 15 WOODEN DECK
- 16 CHILDREN'S PLAY AREA
- 17 FEATURE PLANTING
- 18 FEATURE SCULPTURE
- 19 BARBECUE PITS

LEGEND

- A DRIVEWAY
- B BASEMENT ENTRY RAMP
- C BASEMENT EXIT RAMP
- D CLUB ENTRY
- E TRANSFORMER YARD
- F GAS BANK
- G DROP-OFF





mantri

Landscape Features

- Beautifully landscaped Gardens with water bodies.
- Outdoor Gym.
- Pick up and drop off point.
- Children's Play Areas.
- Basket ball practice court.
- Paved garden walk.
- Jogging/Walking Trail.
- Green Building Features.
- Many other amenities...

Elevation Views

Elevation View



mantri



Elevation View



mantri





mantri

Penthouse Landscape Roof Tops



Elevation View



mantri



Elevation View



mantri



Elevation Ariel View



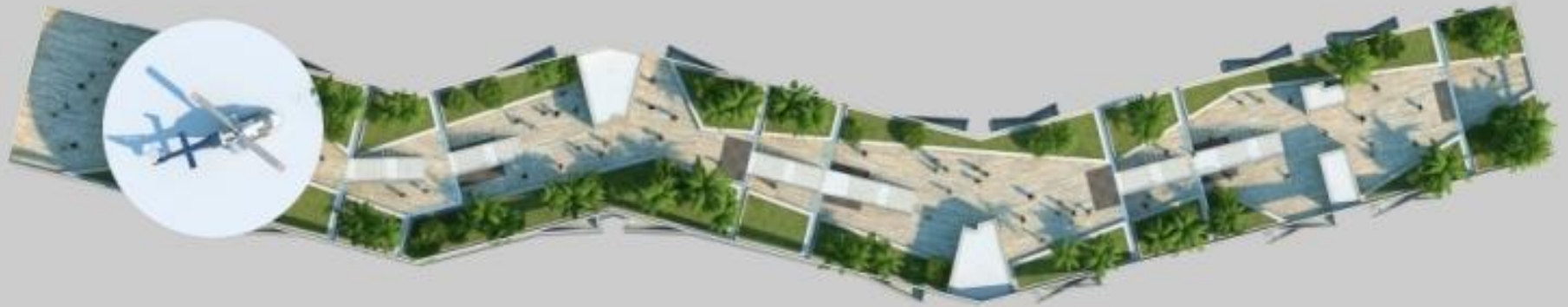
mantri



Top View



mantri



Clubhouse

- One of its kind of high end clubhouse which is literally submerged with green/landscaped roof.
- Club house Amenities include : Health Spa, multipurpose hall, Gymnasium, Indoor Squash Court, TT Room, Billiards, Aerobics, TV room and Indoor Games.
- Green roof integrates the clubhouse as a landscaping element into the aesthetics of the design while reducing heat gain.

Clubhouse View



mantri



Clubhouse View



mantri



Clubhouse View



mantri



Clubhouse View



mantri



Swimming Pool View



Children Play Area



mantri



Amenities

Common Amenities



Clubhouse:

- Well equipped Health Club
- Separate Steam, Sauna and Massage room for ladies and gents



mantri

Indoor Amenities



- Squash court
- Pool Table
- Soccer Table
- Laundromat
- Tele Medicine centre
- Convenience Store
- Crèche
- Table Tennis and other indoor games
- Concierge



Living Room



mantri







mantri

Master Bedroom



Guest Bedroom



mantri



Floor Plans



mantri

Tower A – Typical Floor Plan

A-302 - 3 BHK
1760 sq.ft 163.5 sq.mts

A-303 - 3 BHK
1920 sq.ft 178.37 sq.mts



A-301 - 2 BHK
1440sq.ft 133.78 sq.mts

A-304 - 3 BHK
1920 sq.ft 178.37 sq.mts



mantri

Tower B – Typical Floor Plan

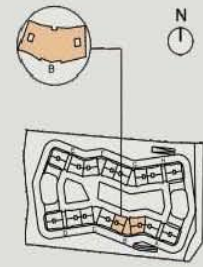
B-304 - 2 BHK	
1420 sq.ft	131.92 sq.mts

B-301 - 3 BHK	
1760 sq.ft	163.5 sq.mts



B-303 - 2 BHK	
1420 sq.ft	131.92sq.mts

B-302 - 2 BHK	
1440 sq.ft	133.78 sq.mts





mantri

Tower C – Typical Floor Plan

C-302 - 2 BHK	
1420 sq.ft	131.92 sq.mts

C-303 - 3 BHK	
1740 sq.ft	161.65 sq.mts



C-301 - 2 BHK	
1420 sq.ft	131.92 sq.mts

C-304 - 3 BHK	
1740 sq.ft	161.65 sq.mts

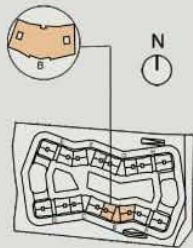


mantri

Tower D – Typical Floor Plan

D-302 - 3 BHK	
1920 sq.ft	178.37 sq.mts

D-303 - 3 BHK	
1740 sq.ft	161.65 sq.mts



D-301 - 3 BHK	
1920 sq.ft	178.37 sq.mts

D-304 - 3 BHK	
1740 sq.ft	161.65 sq.mts

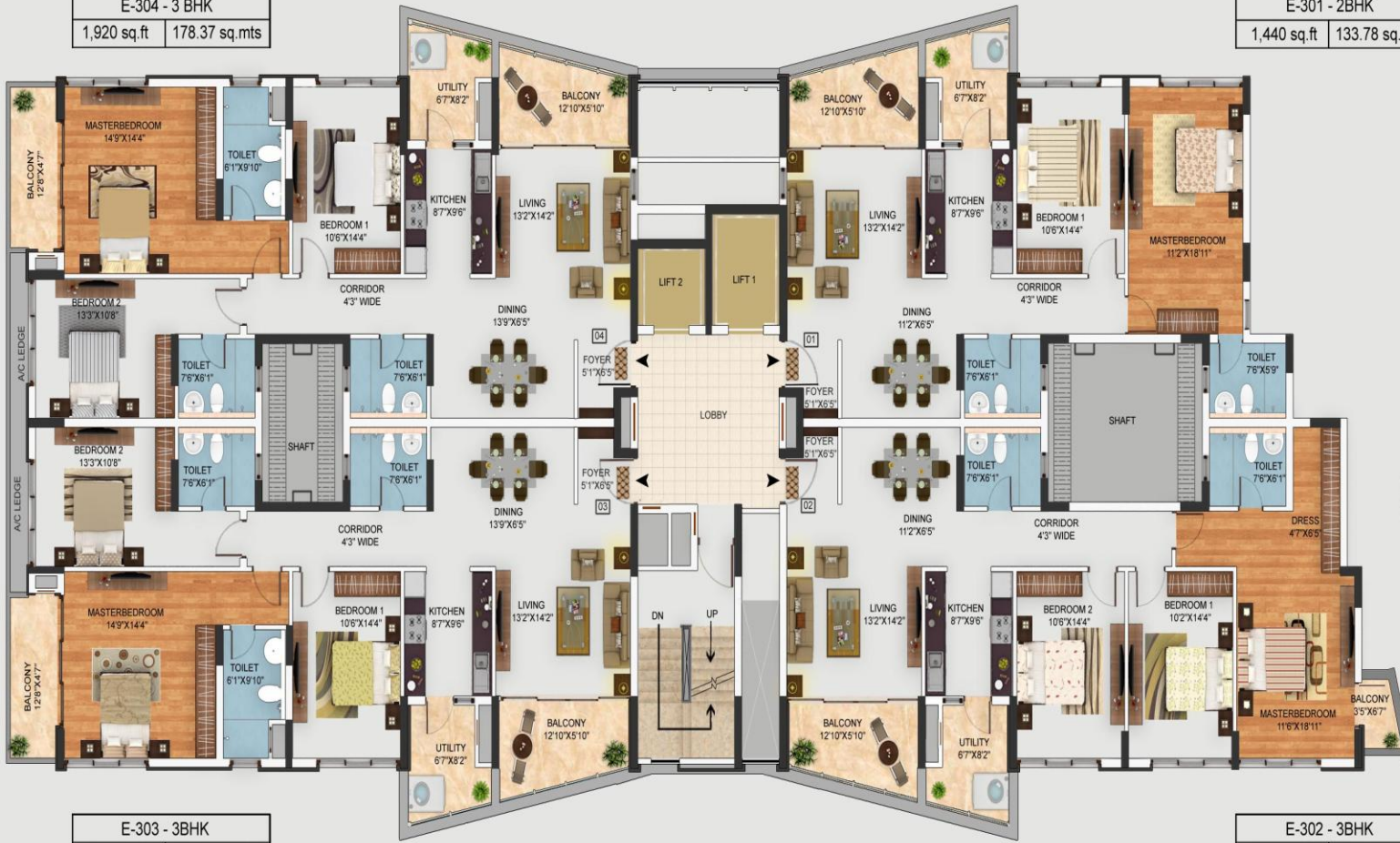


mantri

Tower E – Typical Floor Plan

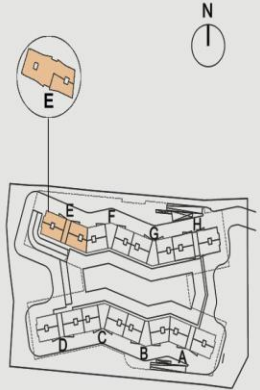
E-304 - 3 BHK	
1,920 sq.ft	178.37 sq.mts

E-301 - 2BHK	
1,440 sq.ft	133.78 sq.mts



E-303 - 3BHK	
1,920 sq.ft	178.37sq.mts

E-302 - 3BHK	
1,760 sq.ft	163.50sq.mts





mantri

Tower F – Typical Floor Plan

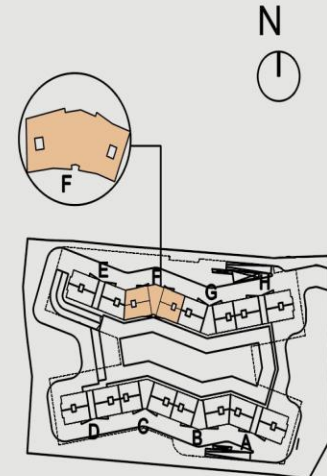
F-302 - 2BHK	
1,440 sq.ft	133.78 sq.mts

F-303 - 2BHK	
1,420 sq.ft	131.92 sq.mts



F-301 - 3BHK	
1,760 sq.ft	163.50sq.mts

F-304 - 2BHK	
1,420 sq.ft	131.92 sq.mts





mantri

Tower G – Typical Floor Plan

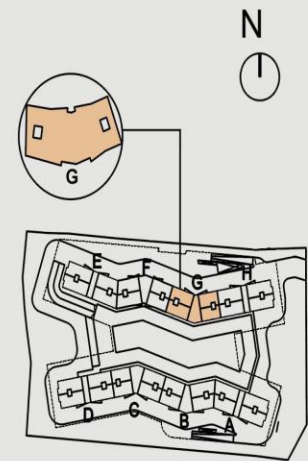
G-304 - 3BHK	
1,740 sq.ft	161.65 sq.mts

G-301 - 2BHK	
1,420 sq.ft	131.92 sq.mts



G-303 - 3BHK	
1,740 sq.ft	161.65 sq.mts

G-302 - 2BHK	
1,420 sq.ft	131.92 sq.mts



Tower H – Typical Floor Plan



mantri

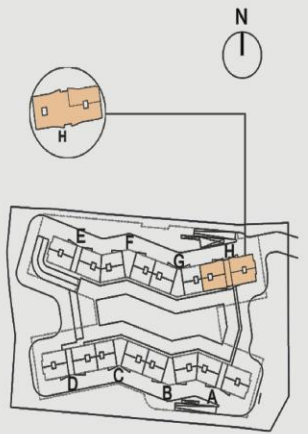
H-304 - 3BHK	
1,740 sq.ft	161.65 sq.mts

H-301 - 3BHK	
1,920 sq.ft	178.37 sq.mts



H-303 - 3BHK	
1,740 sq.ft	161.65 sq.mts

H-302 - 3BHK	
1,920 sq.ft	178.37 sq.mts



1420 sq.ft – Individual Floor Plan



mantri



1690 sq.ft – Individual Floor Plan



1760 sq.ft – Individual Floor Plan



1920 sq.ft – Individual Floor Plan



Differentiators



MANTRI PROMISES

- On time, every time
- Highest carpet area
- Award-winning landscapes
- Attention to detail
- Community living

PROPCARE

- Project maintenance
- Rentals & resales

mantri insignia

- An exclusive loyalty program
- Points on every successful purchase/referral
- Redemption of points from a wide range of exclusive benefits and privileges

SPACETHETICS

adding elan to your space

- One-stop shop for home interiors
- Premium, top of the line accessories



mantri

Awards and Accolades

Awards and Accolades.



Mantri Developers was honored by CMO Asia with the award for Brand Excellence.



Mantri Developers was adjudged as one of India's Top 10 builders at the "Construction World Architect & Builders awards."



Mantri Developers was awarded the CNBC Awaaz CRISIL Real Estate Award for India's best Residential Building.



Mr. Sushil Mantri was bestowed with the "Young Visionary Award in Real Estate Infrastructure" by CSI.



Mr.Sushil Mantri was awarded 'Entrepreneur of the Year' by Big Brands Research.



Mantri Developers was conferred with the prestigious CII Sustainability award for "STRONG COMMITMENT TO EXCEL" on the journey towards sustainable development.

World Class Management Systems



We at Mantri Developers are committed to providing eco-friendly commercial and residential dwellings in a safe and healthy environment. We abide by our commitment to prevent pollution and meet, legal and other requirements. And continually improve the effectiveness of our management system.

We will ceaselessly work towards minimizing occupational risks and hazards at our work stations. And we respect the principle of social accountability and meet its requirements.



Contact Information

Head Office: Mantri House
#41, Vittal Mallya Road, Bangalore – 560 001
Ph: +91-80-4130 0000, email: homes@mantri.in

Project Office: Mantri Manyata Lithos
Inside Manyata Tech Park,
Hebbal, Bangalore.

e-mail: lithos@mantri.in
SMS: mantri to 56767

Dubai e-mail: dubaisales@mantri.in
M: +97104-358-4305
M: +97155-687-3150
T: +97104-358-4305

www.mantri.in
Toll free : 1800-121-0000

Thank you
