



Goyal
& Co.



HARIYANA
GROUP

creating landmarks since 1971

ALANOVILLE

OFF HENNUR - KANNUR MAIN ROAD

RERA ACK No. : PR/KN/170729/000294

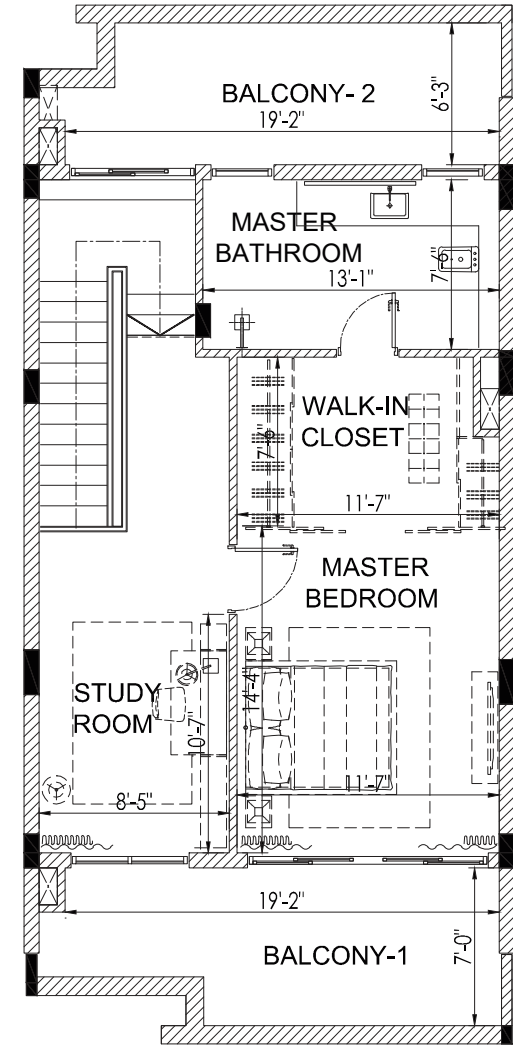
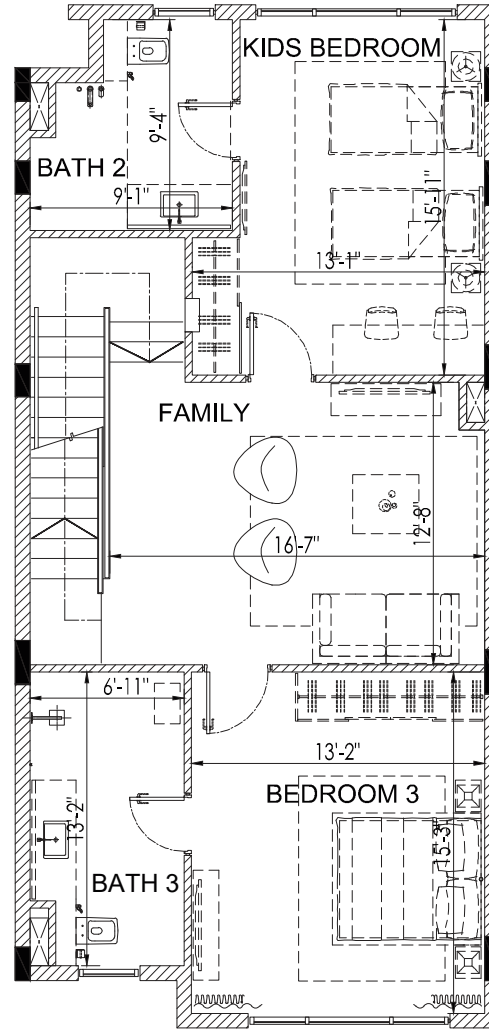
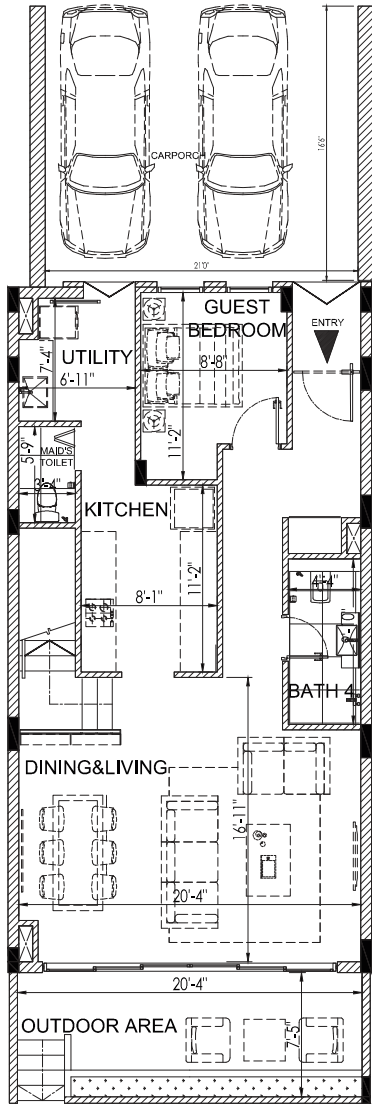
PROJECT PARTNER



SITE PLAN



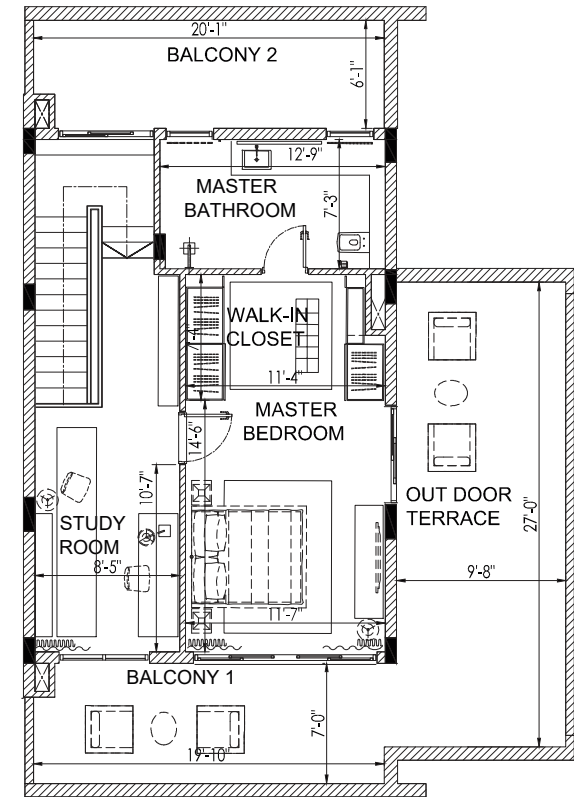
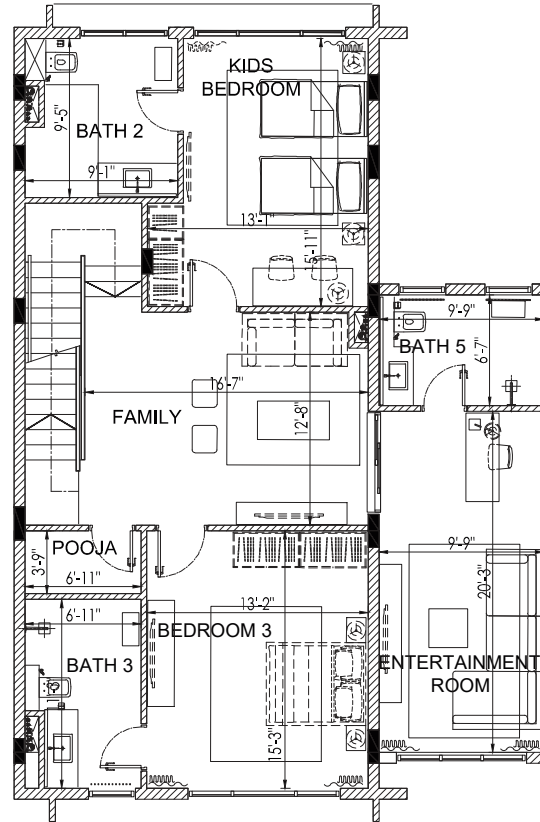
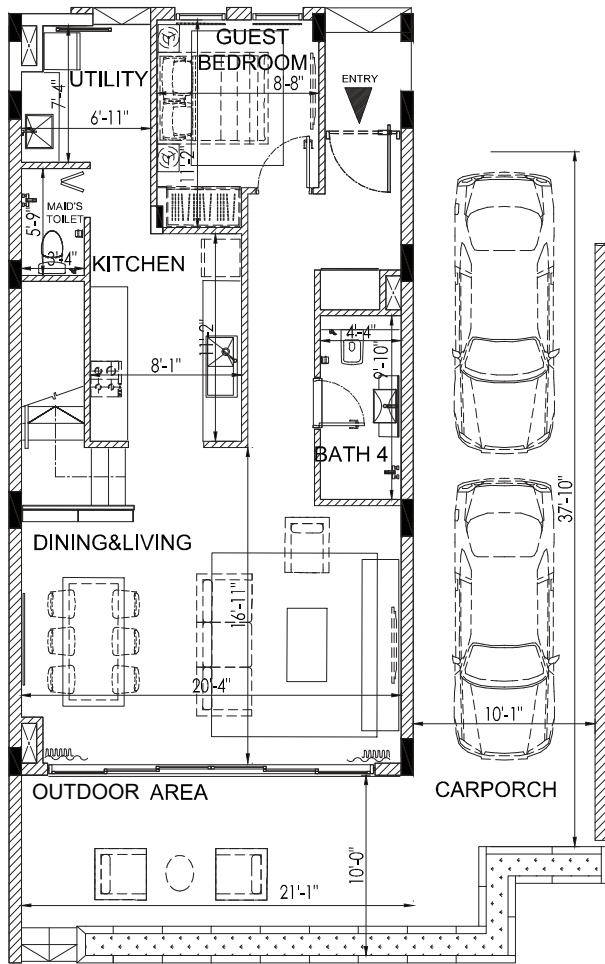
UNIT PLAN



Ground Floor	Carpet Area	72.73 Sqmt	779 Sqft	First Floor	Carpet Area	80.88 Sqmt	871 Sqft	Second Floor	Carpet Area	55.82 Sqmt	601 Sqft	
	Balcony Area	15.94 Sqmt	172 Sqft		Balcony Area	22.35 Sqmt	241 Sqft					
Type - 1 BLOCK A-B-C-D-E		Saleable Area - 2957 Sqft		Carpet Area	209.07 Sqmt	2250 Sqft	Balcony Area	38.29 Sqmt	412 Sqft	Car Porch Area	28.40 Sqmt	306 Sqft

NOTE : All measurements shown are on unfinished surfaces ; Numbers in Sqft are rounded off

UNIT PLAN



Ground Floor	Carpet Area	71.83 Sqmt	773 Sqft	First Floor	Carpet Area	109.15 Sqmt	1175 Sqft	Second Floor	Carpet Area	55.82 Sqmt	601 Sqft		
	Balcony Area	21.10 Sqmt	227 Sqft		Balcony Area	24.93 Sqmt	269 Sqft		Terrace Area	24.63 Sqmt	265 Sqft		
Car Porch Area	37.15 Sqmt	400 Sqft											
Type - 2 BLOCK K-H-J-F-G	Saleable Area - 3450 Sqft	Carpet Area	236.80 Sqmt	2549 Sqft	Balcony Area	46.03 Sqmt	495 Sqft	Car Porch Area	37.15 Sqmt	400 Sqft	Terrace Area	24.63 Sqmt	265 Sqft

NOTE : All measurements shown are on unfinished surfaces ; Numbers in Sqft are rounded off

SPECIFICATION

STRUCTURE

- Seismic Zone II complaint structure.
- Solid Block masonry.

WALL FINISHING

- Plastered, smoothly finished and painted with premium quality plastic emulsion.
- External walls painted with weather coat/weather shield paints.

KITCHEN

- Kitchens counter 20 mm thick granite with single drain board sink to be supplied unattached.

FLOORING

- Italian Marble in Living, Dining, Corridor, Family Room & Staircase.
- Cladding with ceramic tiles 2ft above the kitchen platform.
- Vitrified Tiles (Kitchen, Utility and all bedrooms).
- Wooden Flooring in Master Bedroom & Entertainment Room.
- Rustic Tiles for balconies.

TOILETS

- Ceramic Tiles dado upto 7ft height.
- Grid False Ceiling.
- Polished Granite Counter with Ceramic Basin.
- CP fittings of Jaquar or equivalent.
- EWC and Ceramic basins of DURAVIT or equivalent in all toilets.

DOORS & WINDOWS

- Main door with teak wood frames and finish flush doors.
- Other doors with salwood frames with molded skin panel doors.
- Powder coated aluminum doors/windows with provision for mosquito meshes in Living and Dining Only.

ELECTRICAL

- Row villas – 10 KW KPTCL supply & DG Back up upto 10 KW.
- 100 % DG Back up for common areas.

WATER SUPPLY

- CPVC lines for water supply.
- UPVC/PVC lines for soil, drainage and external lines.
- Sewage Treatment Plant.
- Rainwater Harvesting.

SECURITY SYSTEMS

- CCTV coverage for the entire campus.
- Video Door Phone.

TV, TELEPHONE & BROADBAND CONNECTIONS.

- TV & Telephone points provided in the living area and all the bedrooms.
- Broadband connections provision is made.
- EPABX system is provided.

AMENITIES

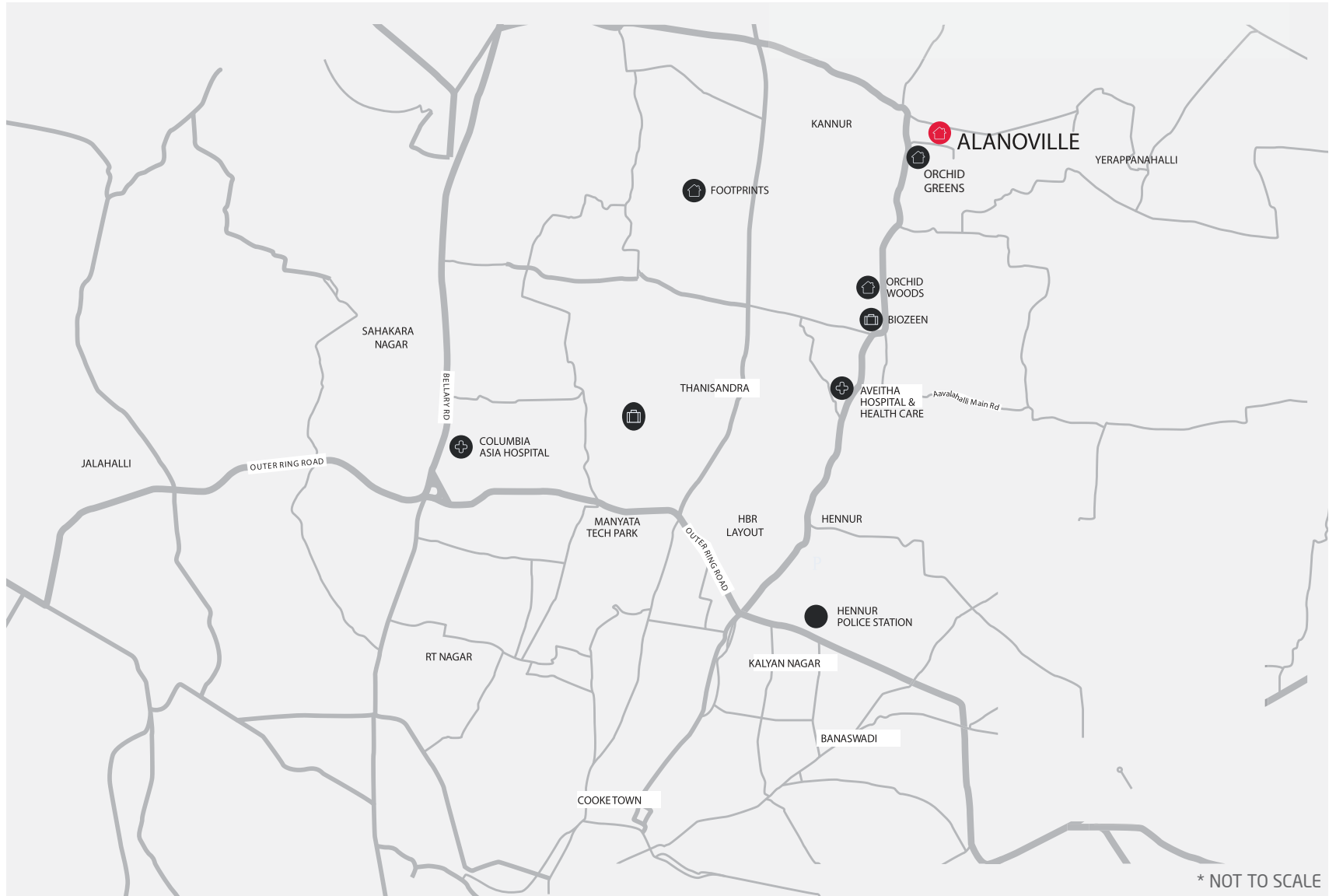
AMENITIES – LANDSCAPE

- Extensive Gardens.
- Party Lawn.
- Greens corridors with seaters.
- Biopond.
- Jogging Track.
- Children Play Area.
- Multipurpose Court.

AMENITIES – CLUBHOUSE

- Gymnasium
- Indoor Games.
- Multipurpose Hall.
- Lounge opening to swimming pool.
- Swimming Pool.
- Pool Deck.

LOCATION MAP



DISCLAIMER:

Information in this brochure, about project are of very general nature. The pictures, layout themes, project landscape, interiors, lightings, etc. are shown as what is intended to be, at the time of completion and presently they are as illustrations and demonstration of the concept of the development. The furniture and fixtures, art effects, the kitchen ware and crockery and cutlery, and the light fittings are not being and only to give our esteemed customer the gauge and idea of how they could furnish the apartment in our project.

You are required to verify all the details of the project, including area, amenities, services, terms of sales and payments and other relevant terms of the project independently with the company's sales team prior to concluding any decision for buying in Alanoville. The content of this brochure should not be treated as any kind of offer by the company.

1 Sqmt = 10.764 Sqft