



PROJECT UNIT PLANS



The spacious and airy 2 & 3 bedroom condominiums are the perfect choice for a growing family. Futuristically designed, the units at Tower Jasper are energy-efficient, well ventilated and offer mesmerizing views of landscaped greens. Giving you access to superior lifestyle amenities amidst acres of refreshing greenery, we have crafted a glittering golden abode, where your family can have it all.



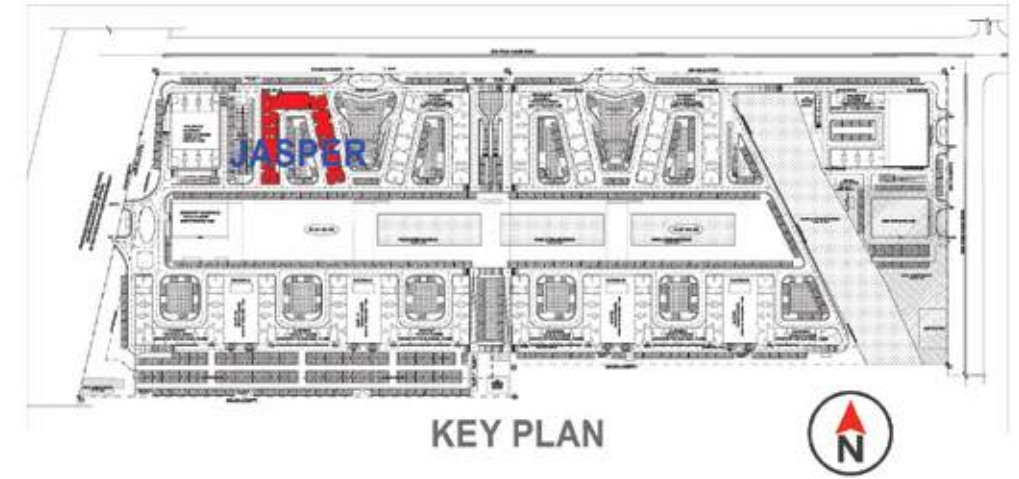
2 BHK

740 SFT
938 SFT

3 BHK

971 SFT
1401 SFT
1561 SFT

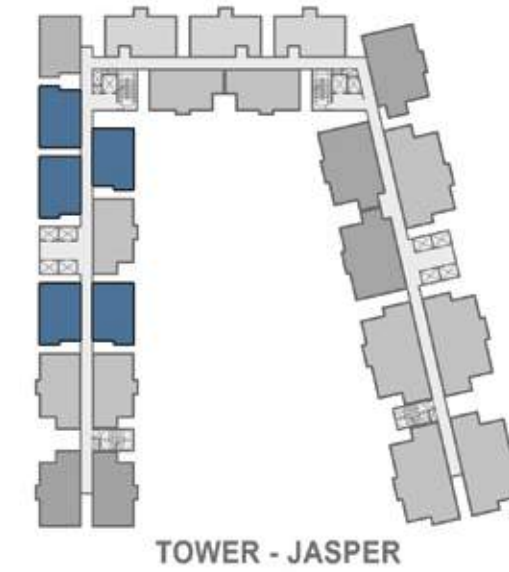
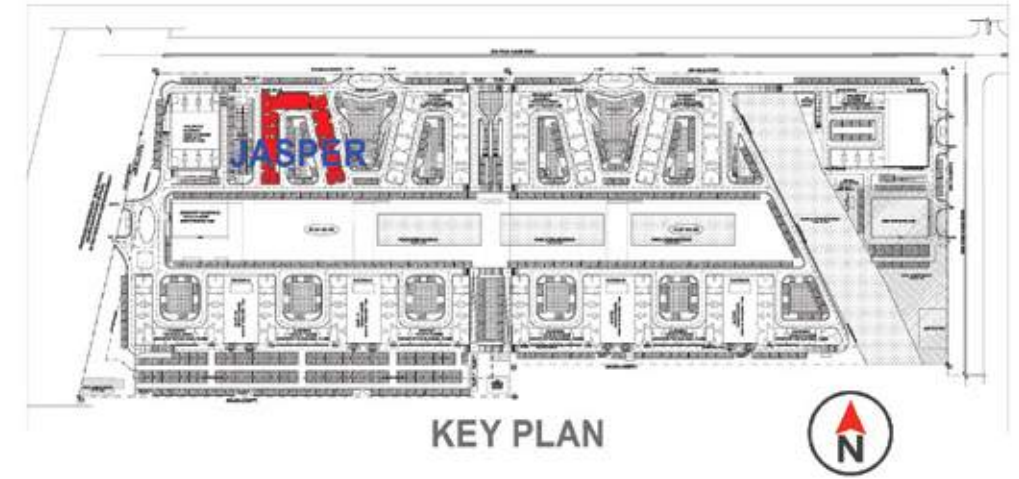
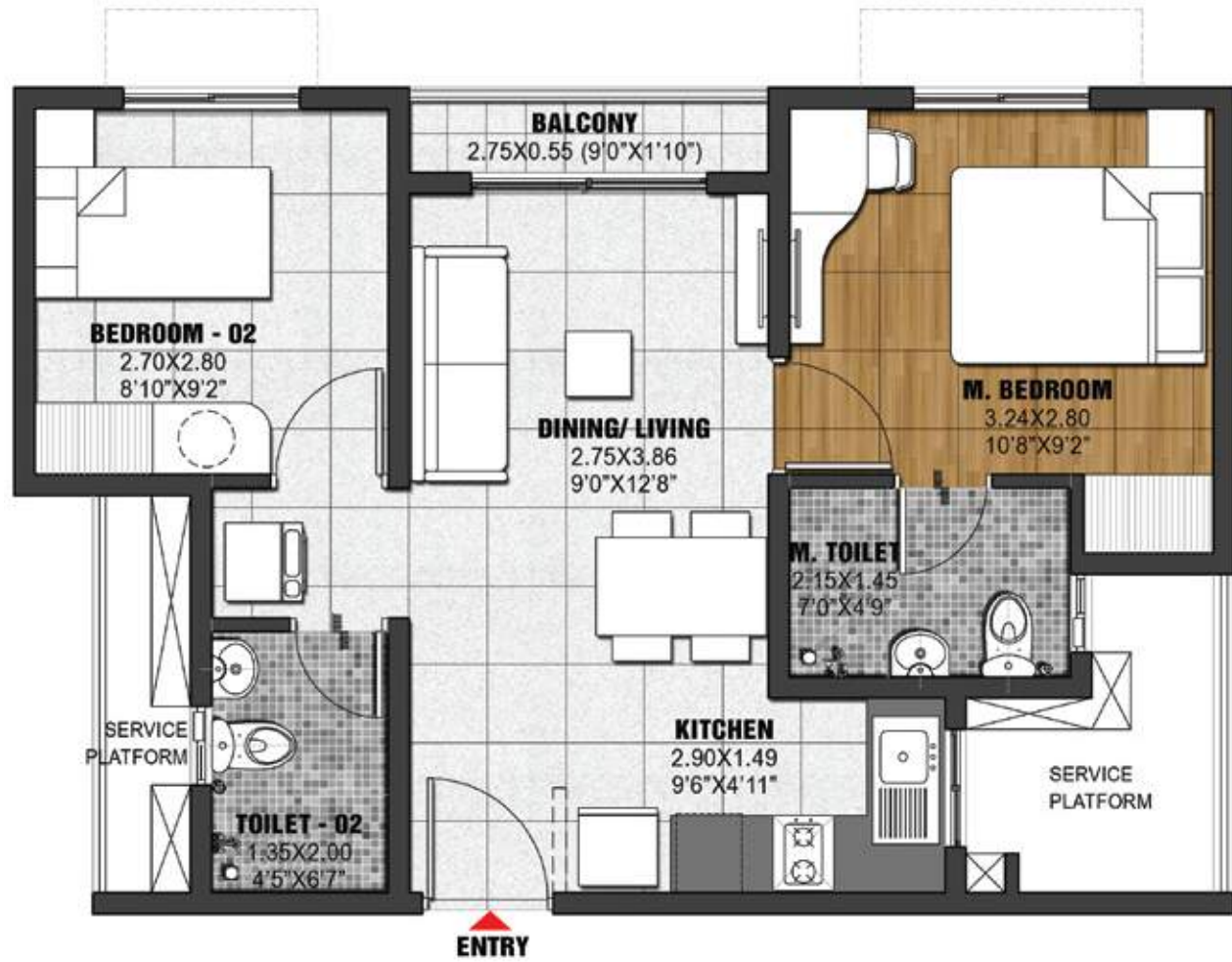
UNIT DISTRIBUTION PLAN (TOWER-J)



- LEGEND**
- TYPE - A3 3 BHK UNIT
 - TYPE - A3a 3 BHK UNIT
 - TYPE - A4 3 BHK UNIT
 - TYPE - A4a 3 BHK UNIT
 - TYPE - B 2 BHK UNIT
 - TYPE - Ba 2 BHK UNIT
 - TYPE - B2 2 BHK UNIT
 - TYPE - C 3 BHK UNIT
 - TYPE - Ca 3 BHK UNIT

The information depicted herein viz., master plans, floor plans, furniture layout, fittings, illustrations, specifications, designs, dimensions, rendered views, colours, amenities and facilities etc., are subject to change without notifications as may be required by the relevant authorities or the developer's architect, and cannot form part of an offer or contract. Whilst every care is taken in providing this information, the Developer cannot be held liable for variations. All illustrations and pictures are artist's impression only. The information are subject to variations, additions, deletions, substitutions and modifications as may be recommended by the company's architect and/or the relevant approving authorities. The Developer is wholly exempt from any liability on account of any claim in this regard. (1 square metre = 10.764 square feet). E & OE.

2 BHK URBAN (TYPE-B)

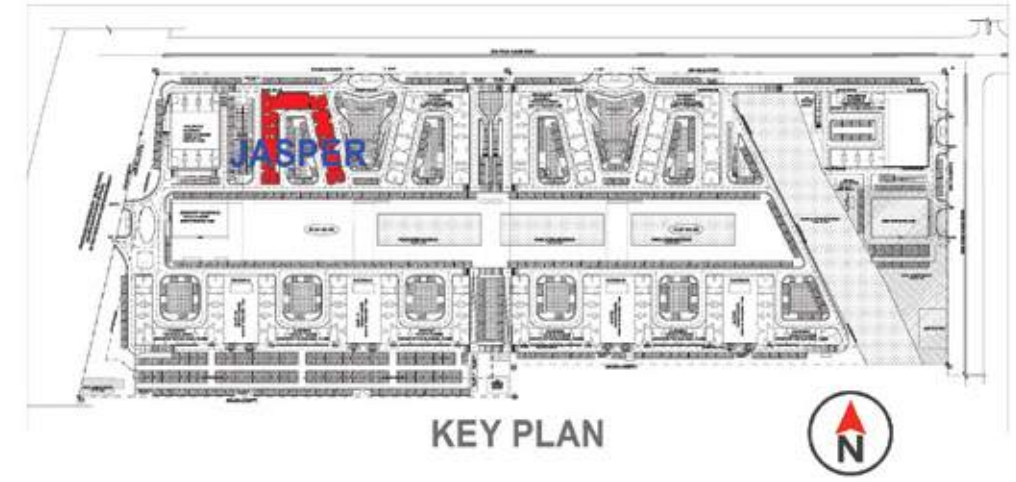


TYPE	UNIT DISTRIBUTION
TYPE - B	J-0105 – J-2405
	J-0106 – J-2406
	J-0108 – J-2408
	J-0109 – J-1909, J-2109 – J-2409
	J-0110 – J-2410

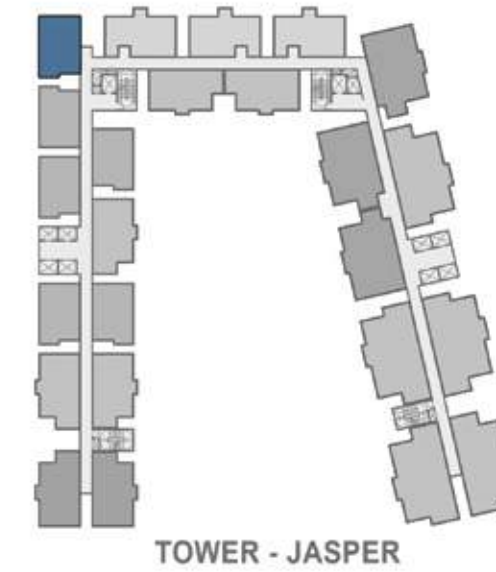
SUPER BUILT-UP AREA	CARPET AREA	BALCONY
740 Sq.ft / 68.74 Sq.m	466 Sq.ft / 43.32 Sq.m	16 Sq.ft / 1.51 Sq.m

The information depicted herein viz., master plans, floor plans, furniture layout, fittings, illustrations, specifications, designs, dimensions, rendered views, colours, amenities and facilities etc., are subject to change without notifications as may be required by the relevant authorities or the developer's architect, and cannot form part of an offer or contract. Whilst every care is taken in providing this information, the Developer cannot be held liable for variations. All illustrations and pictures are artist's impression only. The information are subject to variations, additions, deletions, substitutions and modifications as may be recommended by the company's architect and/or the relevant approving authorities. The Developer is wholly exempt from any liability on account of any claim in this regard. (1 square metre = 10.764 square feet). E & OE.

2 BHK URBAN (TYPE-Ba)



KEY PLAN



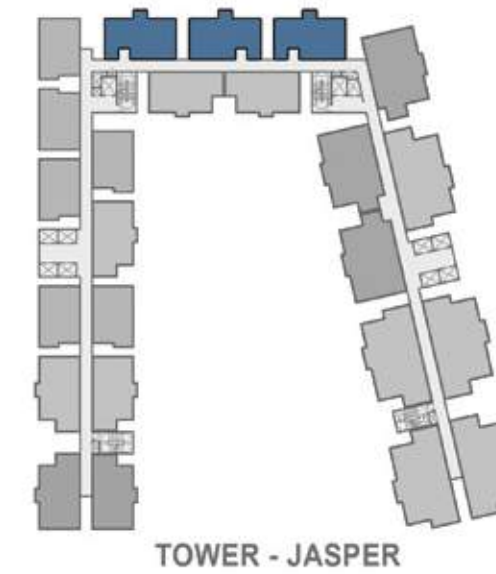
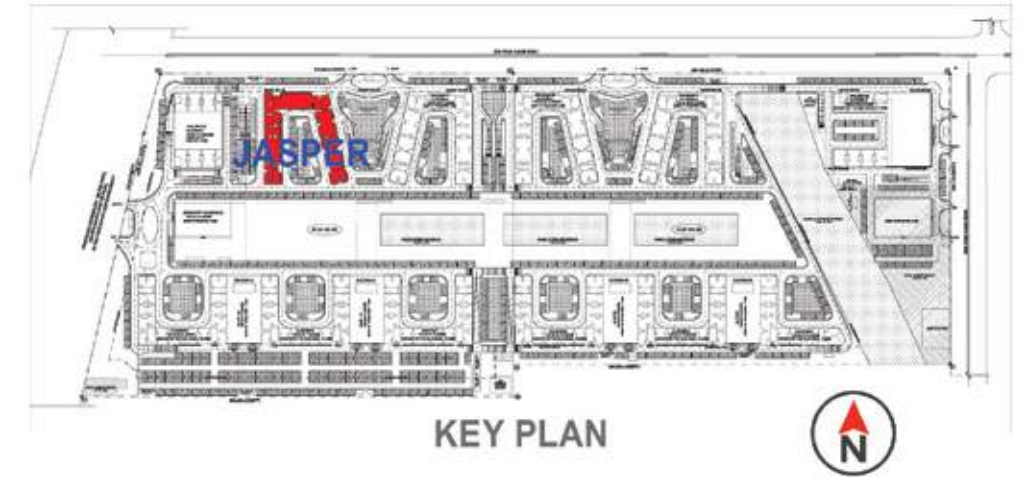
TOWER - JASPER

TYPE	UNIT DISTRIBUTION
TYPE - Ba	J-0111-2411

SUPER BUILT-UP AREA	CARPET AREA	BALCONY
740 Sq.ft / 68.74 Sq.m	466 Sq.ft / 43.32 Sq.m	16 Sq.ft / 1.51 Sq.m

The information depicted herein viz., master plans, floor plans, furniture layout, fittings, illustrations, specifications, designs, dimensions, rendered views, colours, amenities and facilities etc., are subject to change without notifications as may be required by the relevant authorities or the developer's architect, and cannot form part of an offer or contract. Whilst every care is taken in providing this information, the Developer cannot be held liable for variations. All illustrations and pictures are artist's impression only. The information are subject to variations, additions, deletions, substitutions and modifications as may be recommended by the company's architect and/or the relevant approving authorities. The Developer is wholly exempt from any liability on account of any claim in this regard. (1 square metre = 10.764 square feet). E & OE.

2 BHK GRAND (TYPE-B2)

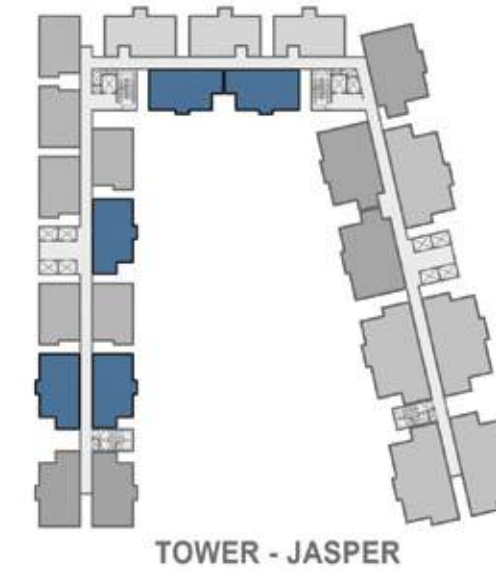
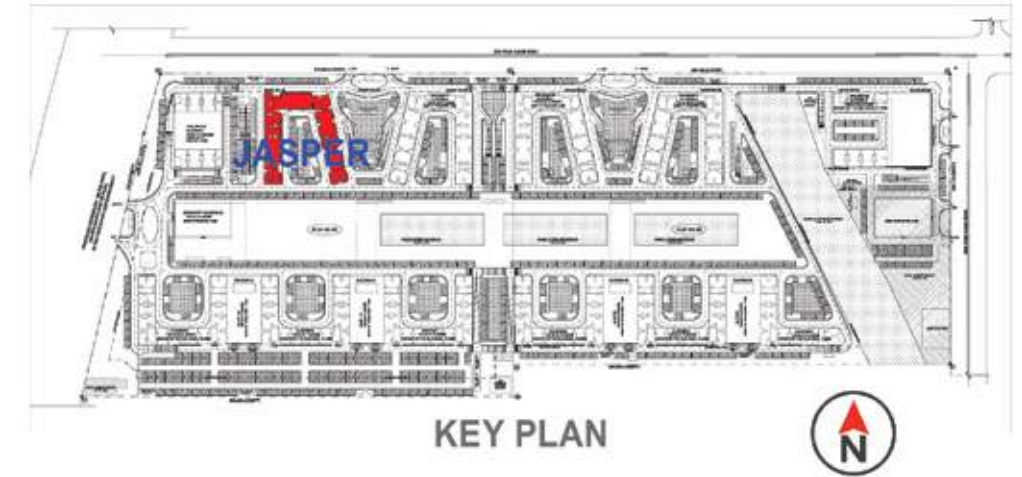
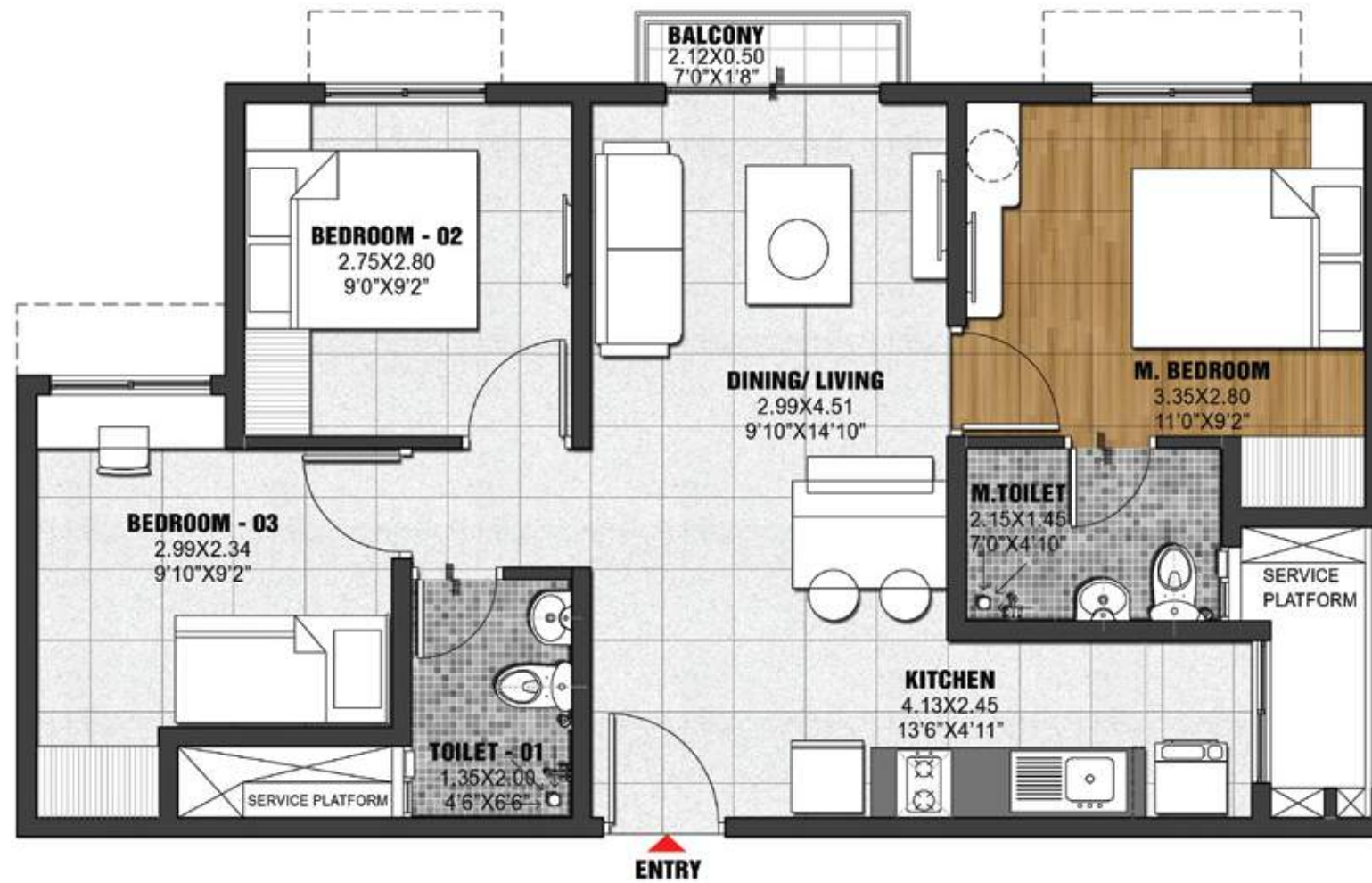


TYPE	UNIT DISTRIBUTION
TYPE - B2	J-0113 - J-2413
	J-0115 - J-2415
	J-0116 - J-2416

SUPER BUILT-UP AREA	CARPET AREA	BALCONY
938 Sq.ft / 87.13 Sq.m	592 Sq.ft / 54.96 Sq.m	25 Sq.ft / 2.35 Sq.m

The information depicted herein viz., master plans, floor plans, furniture layout, fittings, illustrations, specifications, designs, dimensions, rendered views, colours, amenities and facilities etc., are subject to change without notifications as may be required by the relevant authorities or the developer's architect, and cannot form part of an offer or contract. Whilst every care is taken in providing this information, the Developer cannot be held liable for variations. All illustrations and pictures are artist's impression only. The information are subject to variations, additions, deletions, substitutions and modifications as may be recommended by the company's architect and/or the relevant approving authorities. The Developer is wholly exempt from any liability on account of any claim in this regard. (1 square metre = 10.764 square feet). E & OE.

3 BHK URBAN (TYPE-A4)

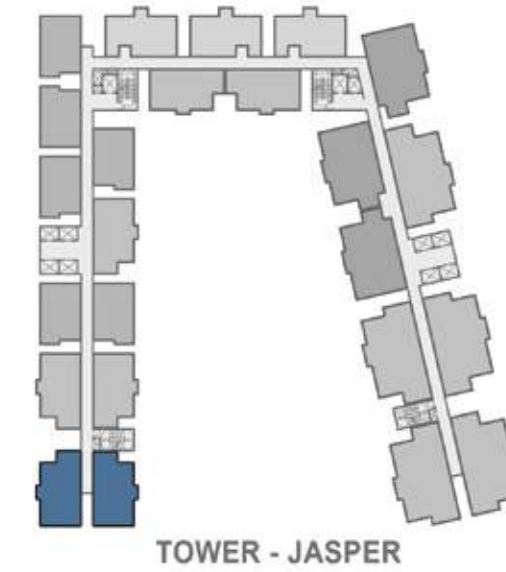
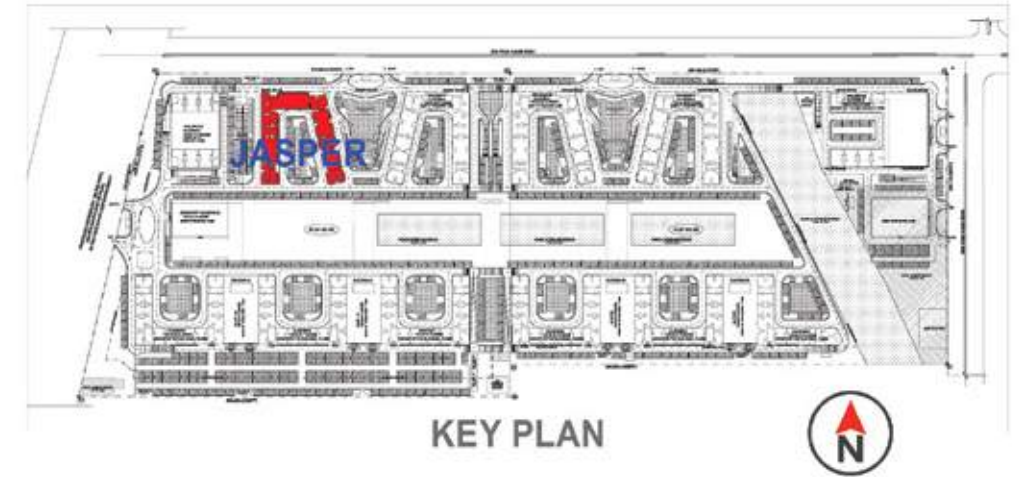
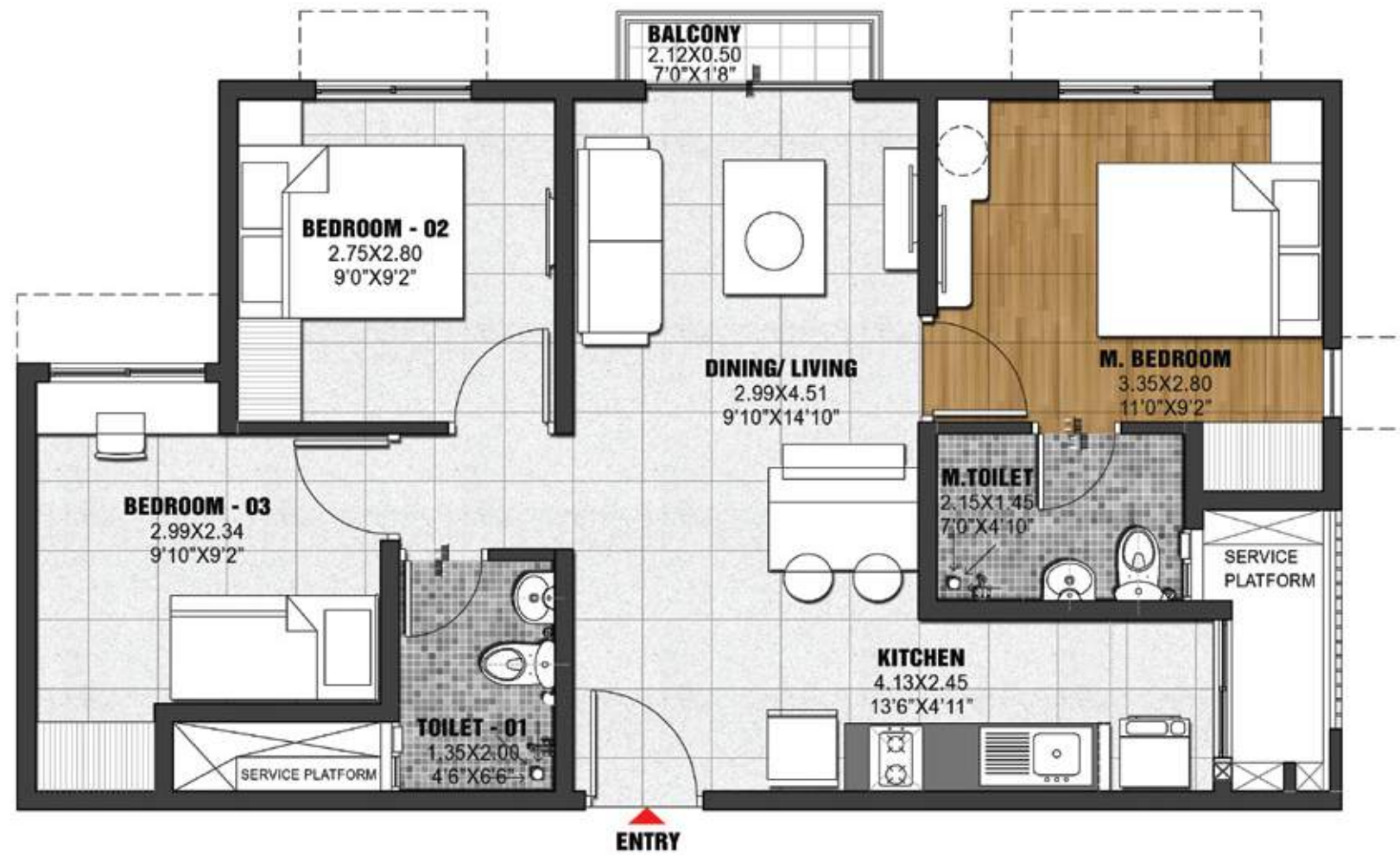


TYPE	UNIT DISTRIBUTION
TYPE - A4	J-0103 – J-2403
	J-0104 – J-2404
	J-0307 – J-2407
	J-0112 - J-2412
	J-0114 - J-2414

SUPER BUILT-UP AREA	CARPET AREA	BALCONY
971 Sq.ft / 90.21 Sq.m	628 Sq.ft / 58.31 Sq.m	11 Sq.ft / 1.05 Sq.m

The information depicted herein viz., master plans, floor plans, furniture layout, fittings, illustrations, specifications, designs, dimensions, rendered views, colours, amenities and facilities etc., are subject to change without notifications as may be required by the relevant authorities or the developer's architect, and cannot form part of an offer or contract. Whilst every care is taken in providing this information, the Developer cannot be held liable for variations. All illustrations and pictures are artist's impression only. The information are subject to variations, additions, deletions, substitutions and modifications as may be recommended by the company's architect and/or the relevant approving authorities. The Developer is wholly exempt from any liability on account of any claim in this regard. (1 square metre = 10.764 square feet). E & OE.

3 BHK URBAN (TYPE-A4a)

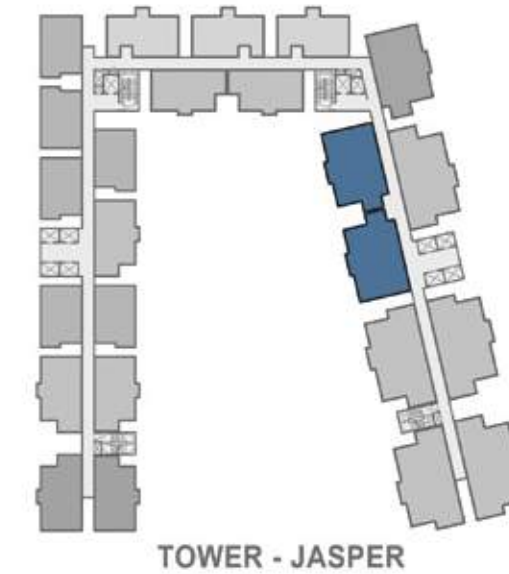
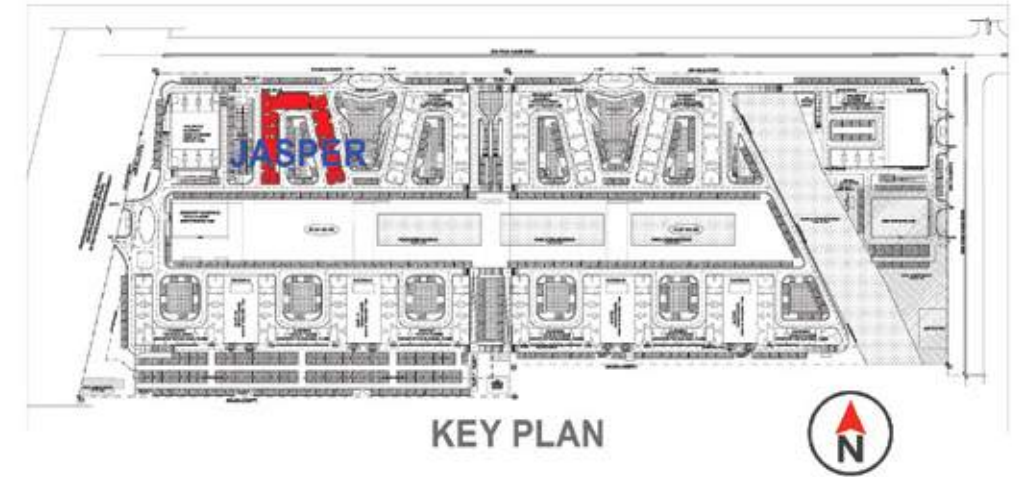
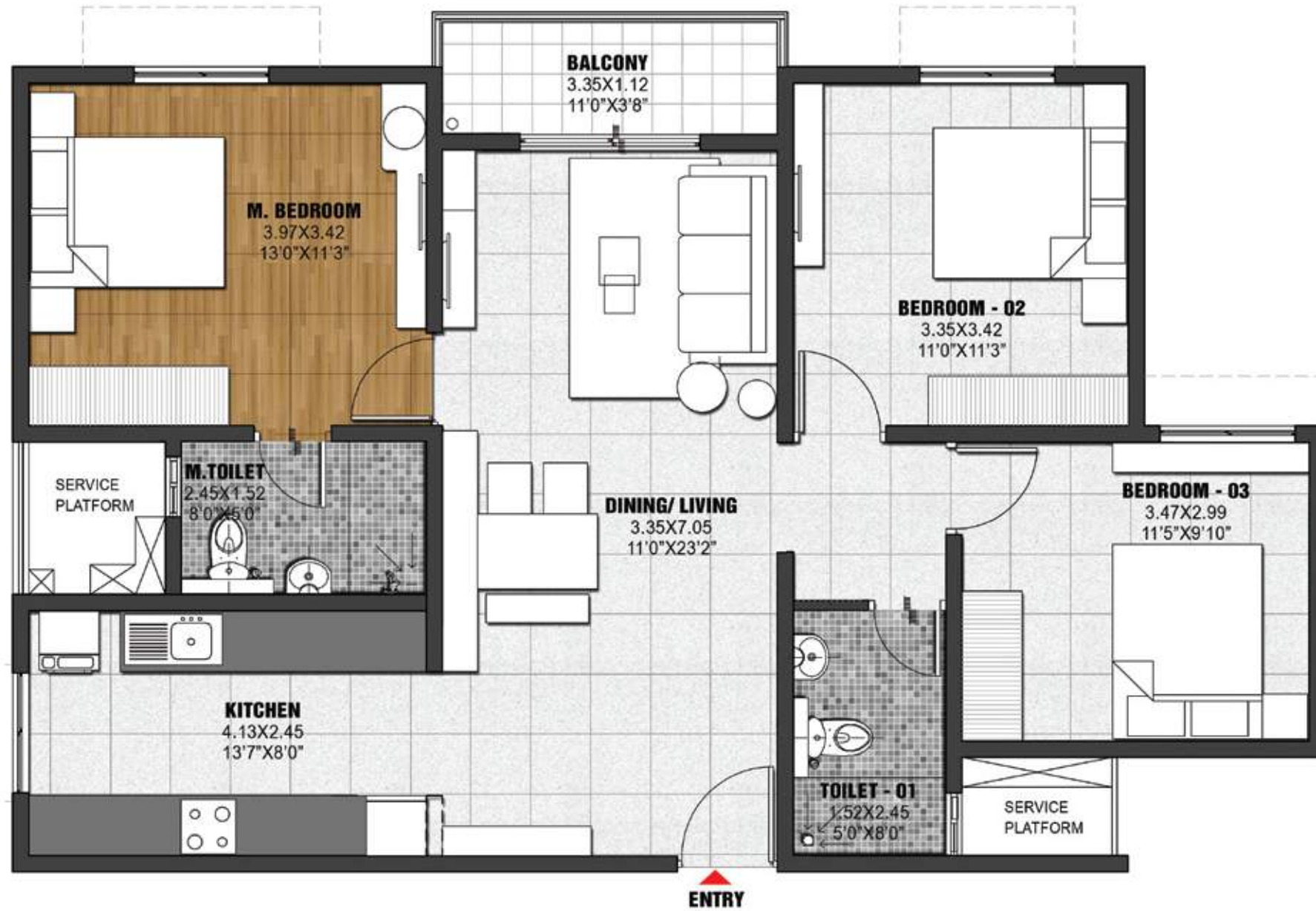


TYPE	UNIT DISTRIBUTION
TYPE - A4a	J-0101-2401
	J-0102-2402

SUPER BUILT-UP AREA	CARPET AREA	BALCONY
971 Sq.ft / 90.21 Sq.m	628 Sq.ft / 58.31 Sq.m	11 Sq.ft / 1.05 Sq.m

The information depicted herein viz., master plans, floor plans, furniture layout, fittings, illustrations, specifications, designs, dimensions, rendered views, colours, amenities and facilities etc., are subject to change without notifications as may be required by the relevant authorities or the developer's architect, and cannot form part of an offer or contract. Whilst every care is taken in providing this information, the Developer cannot be held liable for variations. All illustrations and pictures are artist's impression only. The information are subject to variations, additions, deletions, substitutions and modifications as may be recommended by the company's architect and/or the relevant approving authorities. The Developer is wholly exempt from any liability on account of any claim in this regard. (1 square metre = 10.764 square feet). E & OE.

3 BHK COMFORT (TYPE-A3)

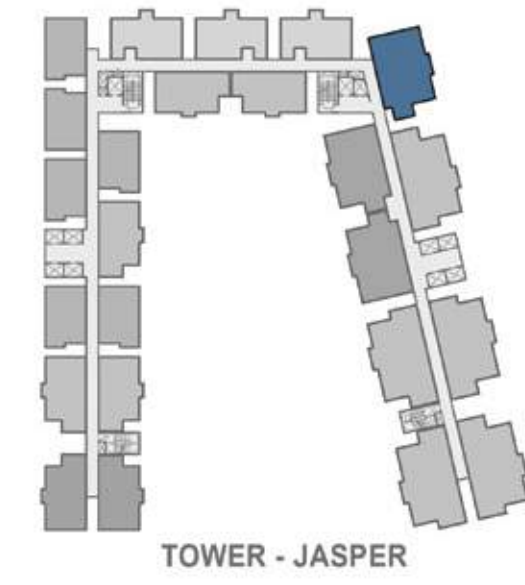
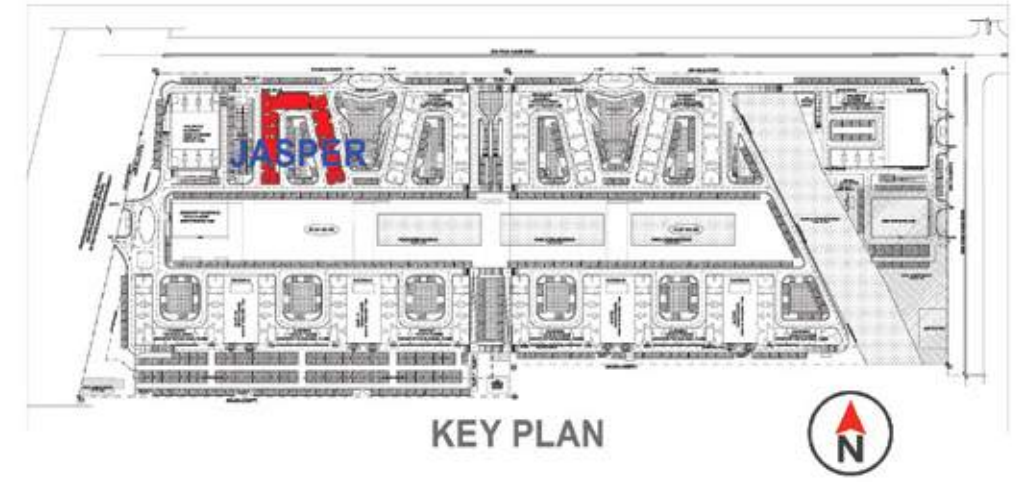
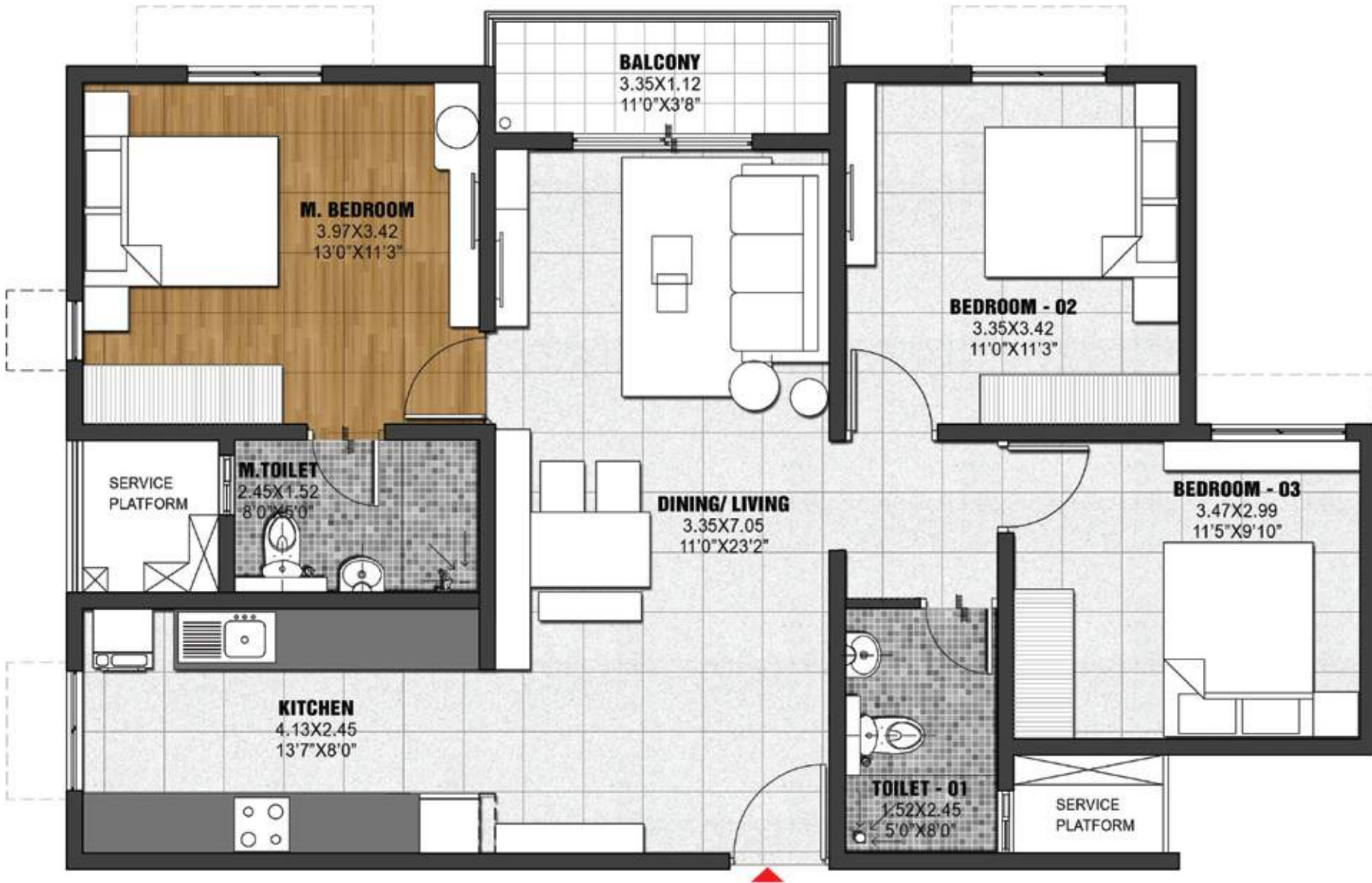


TYPE	UNIT DISTRIBUTION
TYPE - A3	J-0118-1918
	J-2118-2418
	J-0320-2420

SUPER BUILT-UP AREA	CARPET AREA	BALCONY
1401 Sq.ft / 130.19 Sq.m	893 Sq.ft / 82.93 Sq.m	40 Sq.ft / 3.75 Sq.m

The information depicted herein viz., master plans, floor plans, furniture layout, fittings, illustrations, specifications, designs, dimensions, rendered views, colours, amenities and facilities etc., are subject to change without notifications as may be required by the relevant authorities or the developer's architect, and cannot form part of an offer or contract. Whilst every care is taken in providing this information, the Developer cannot be held liable for variations. All illustrations and pictures are artist's impression only. The information are subject to variations, additions, deletions, substitutions and modifications as may be recommended by the company's architect and/or the relevant approving authorities. The Developer is wholly exempt from any liability on account of any claim in this regard. (1 square metre = 10.764 square feet). E & OE.

3 BHK COMFORT (TYPE-A3a)

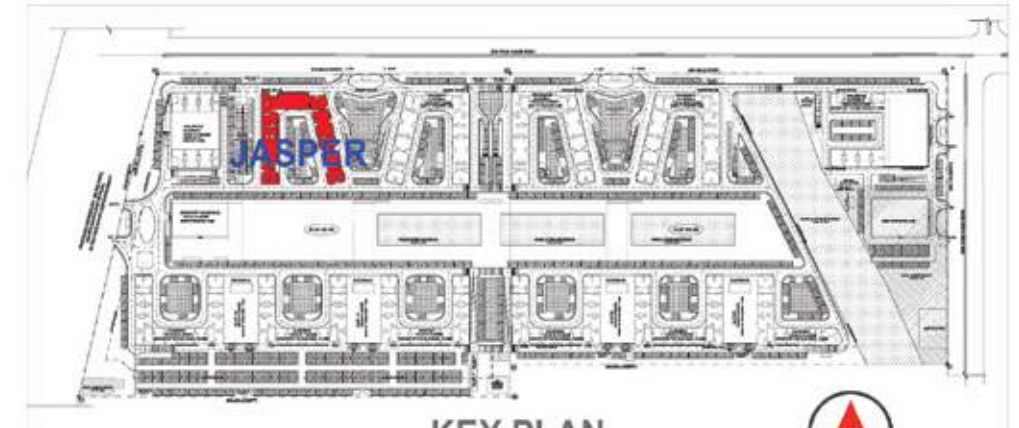


TYPE	UNIT DISTRIBUTION
TYPE - A3a	J-0117-2417

SUPER BUILT-UP AREA	CARPET AREA	BALCONY
1401 Sq.ft / 130.19 Sq.m	893 Sq.ft / 82.93 Sq.m	40 Sq.ft / 3.75 Sq.m

The information depicted herein viz., master plans, floor plans, furniture layout, fittings, illustrations, specifications, designs, dimensions, rendered views, colours, amenities and facilities etc., are subject to change without notifications as may be required by the relevant authorities or the developer's architect, and cannot form part of an offer or contract. Whilst every care is taken in providing this information, the Developer cannot be held liable for variations. All illustrations and pictures are artist's impression only. The information are subject to variations, additions, deletions, substitutions and modifications as may be recommended by the company's architect and/or the relevant approving authorities. The Developer is wholly exempt from any liability on account of any claim in this regard. (1 square metre = 10.764 square feet). E & OE.

3 BHK GRAND (TYPE-C)



KEY PLAN



TOWER - JASPER

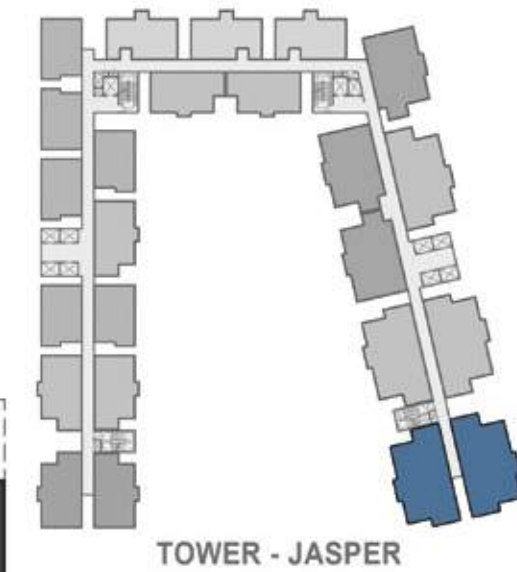
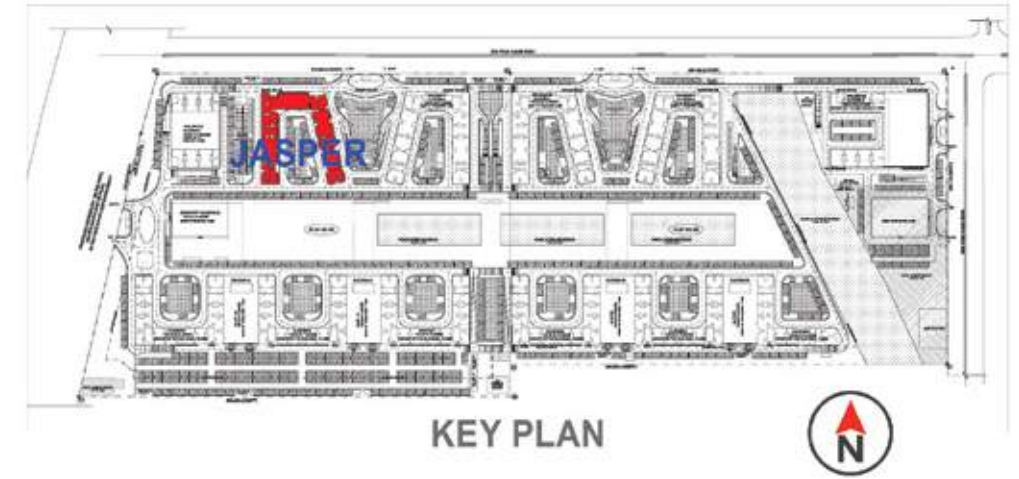


TYPE	UNIT DISTRIBUTION
TYPE - C	J-0119-2419
	J-0122-2422
	J-0121-2421

SUPER BUILT-UP AREA	CARPET AREA	BALCONY
1561 Sq.ft / 145.06 Sq.m	996 Sq.ft / 92.58 Sq.m	40 Sq.ft / 3.75 Sq.m

The information depicted herein viz., master plans, floor plans, furniture layout, fittings, illustrations, specifications, designs, dimensions, rendered views, colours, amenities and facilities etc., are subject to change without notifications as may be required by the relevant authorities or the developer's architect, and cannot form part of an offer or contract. Whilst every care is taken in providing this information, the Developer cannot be held liable for variations. All illustrations and pictures are artist's impression only. The information are subject to variations, additions, deletions, substitutions and modifications as may be recommended by the company's architect and/or the relevant approving authorities. The Developer is wholly exempt from any liability on account of any claim in this regard. (1 square metre = 10.764 square feet). E & OE.

3 BHK GRAND (TYPE-Ca)



TYPE	UNIT DISTRIBUTION
TYPE - Ca	J-0123-2423
	J-0124-2424

SUPER BUILT-UP AREA	CARPET AREA	BALCONY
1561 Sq.ft / 145.06 Sq.m	996 Sq.ft / 92.58 Sq.m	40 Sq.ft / 3.75 Sq.m

The information depicted herein viz., master plans, floor plans, furniture layout, fittings, illustrations, specifications, designs, dimensions, rendered views, colours, amenities and facilities etc., are subject to change without notifications as may be required by the relevant authorities or the developer's architect, and cannot form part of an offer or contract. Whilst every care is taken in providing this information, the Developer cannot be held liable for variations. All illustrations and pictures are artist's impression only. The information are subject to variations, additions, deletions, substitutions and modifications as may be recommended by the company's architect and/or the relevant approving authorities. The Developer is wholly exempt from any liability on account of any claim in this regard. (1 square metre = 10.764 square feet). E & OE.