

WE'VE TAKEN LUXURY SKY HIGH

Life at Brigade Exotica is all about appreciating the subtle nuances that elevate one's lifestyle beyond the ordinary. There are two magnificent towers, both 35 storeys tall, riding above a sea of greenery and surrounded by vast open spaces. Here, nature becomes a part of your everyday regime. With various green zones and exquisite landscaping by Balinese landscape architects, it is truly an abode for those who appreciate the finer things in life.



LEGEND

- | | | | |
|----------------------------------|--------------------------------|-----------------------|-------|
| 1. Security | 11. Transformer Yard | Civic amenities | ----- |
| 2. Driveway | 12. Multi-purpose Amphitheatre | Parks and open spaces | ----- |
| 3. Pathway | 13. Party Lawn | Katte kharab | ----- |
| 4. Parking | 14. Open Lawn | | |
| 5. GRC Rocks | 15. Kids' Play Area | | |
| 6. Pavillon | 16. Rainwater Harvesting Pond | | |
| 7. Bridge | 17. Swimming Pool | | |
| 8. Internal Court with Waterbody | 18. Tennis Court | | |
| 9. Cascade River | 19. Basketball Court | | |
| 10. Sand Pit | | | |

TYPICAL FLOOR PLAN

3 Bedrooms + 3 Toilets
Unit - Type 1 (Small Patio)



SUPER BUILT-UP AREA

2,640 Sq.ft. / 245.63 Sq.m.

CARPET AREA

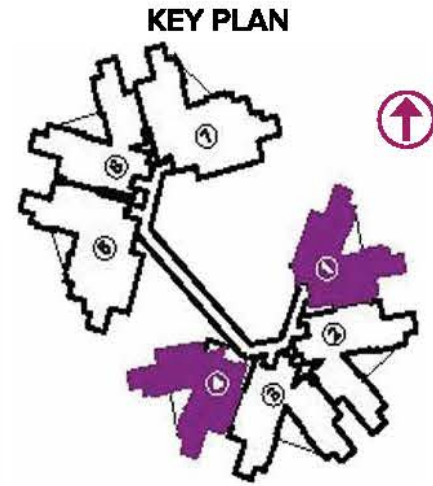
1,759 Sq.ft. / 163.45 Sq.m.

The information depicted herein viz., master plans, floor plans, furniture layout, fittings, illustrations, specifications, designs, dimensions, rendered views, colours, amenities and facilities etc., are subject to change without notifications as may be required by the relevant authorities or the developer's architect, and cannot form part of an offer or contract. Whilst every care is taken in providing this information, the Developer cannot be held liable for variations. All illustrations and pictures are artist's impression only. The information are subject to variations, additions, deletions, substitutions and modifications as may be recommended by the company's architect and/or the relevant approving authorities. The Developer is wholly exempt from any liability on account of any claim in this regard. (1 square metre = 10.764 square feet). E & OE.

The information depicted herein viz., master plans, floor plans, furniture layout, fittings, illustrations, specifications, designs, dimensions, rendered views, colours, amenities and facilities etc., are subject to change without notifications as may be required by the relevant authorities or the developer's architect, and cannot form part of an offer or contract. Whilst every care is taken in providing this information, the Developer cannot be held liable for variations. All illustrations and pictures are artist's impression only. The information are subject to variations, additions, deletions, substitutions and modifications as may be recommended by the company's architect and/or the relevant approving authorities. The Developer is wholly exempt from any liability on account of any claim in this regard. (1 square metre = 10.764 square feet). E & OE.

TYPICAL FLOOR PLAN

3 Bedrooms + 3 Toilets
Unit - Type 2 (Large Patio)



SUPER BUILT-UP AREA

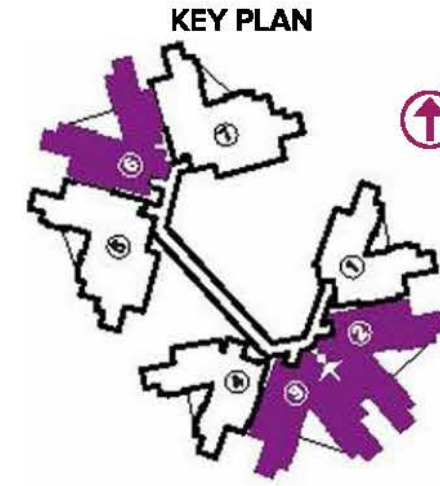
2,760 Sq.ft. / 255.96 Sq.m.

CARPET AREA

1,762 Sq.ft. / 163.73 Sq.m.

TYPICAL FLOOR PLAN

3 Bedrooms + 3 Toilets
Unit - Type 2 (Small Patio)



SUPER BUILT-UP AREA

2,990 Sq.ft. / 277.65 Sq.m.

CARPET AREA

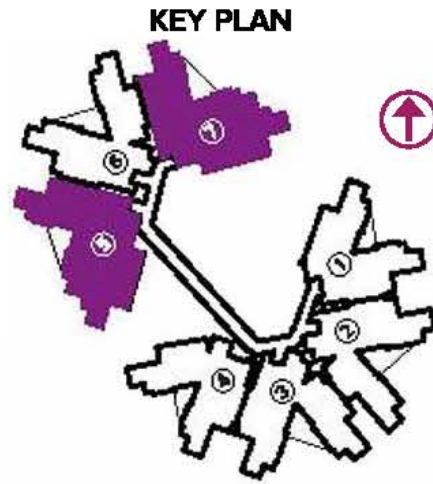
1,969 Sq.ft. / 182.88 Sq.m.

The information depicted herein viz., master plans, floor plans, furniture layout, fittings, illustrations, specifications, designs, dimensions, rendered views, colours, amenities and facilities etc., are subject to change without notifications as may be required by the relevant authorities or the developer's architect, and cannot form part of an offer or contract. Whilst every care is taken in providing this information, the Developer cannot be held liable for variations. All illustrations and pictures are artist's impression only. The information are subject to variations, additions, deletions, substitutions and modifications as may be recommended by the company's architect and/or the relevant approving authorities. The Developer is wholly exempt from any liability on account of any claim in this regard. (1 square metre = 10.764 square feet). E & OE.

The information depicted herein viz., master plans, floor plans, furniture layout, fittings, illustrations, specifications, designs, dimensions, rendered views, colours, amenities and facilities etc., are subject to change without notifications as may be required by the relevant authorities or the developer's architect, and cannot form part of an offer or contract. Whilst every care is taken in providing this information, the Developer cannot be held liable for variations. All illustrations and pictures are artist's impression only. The information are subject to variations, additions, deletions, substitutions and modifications as may be recommended by the company's architect and/or the relevant approving authorities. The Developer is wholly exempt from any liability on account of any claim in this regard. (1 square metre = 10.764 square feet). E & OE.

TYPICAL FLOOR PLAN

4 Bedrooms + 4 Toilets
Unit - Type 1 (Large Patio)



SUPER BUILT-UP AREA

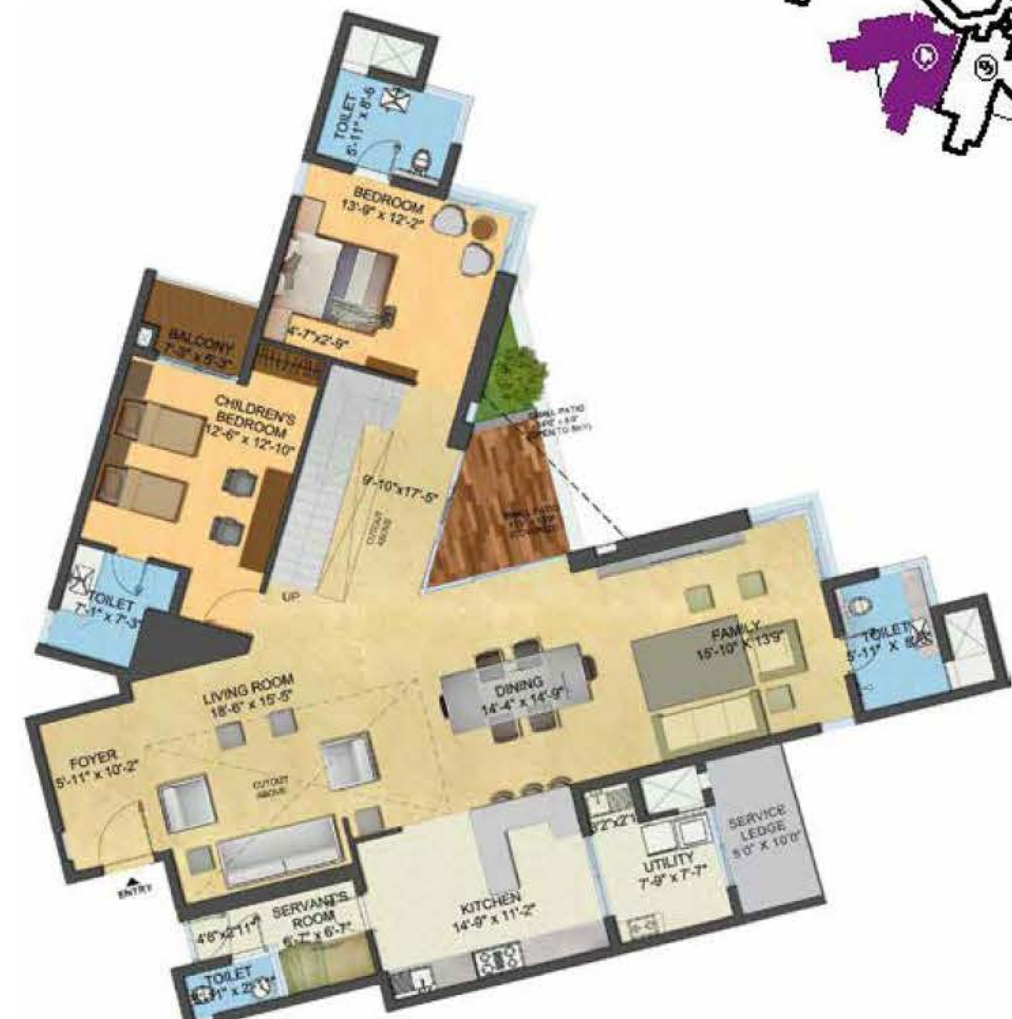
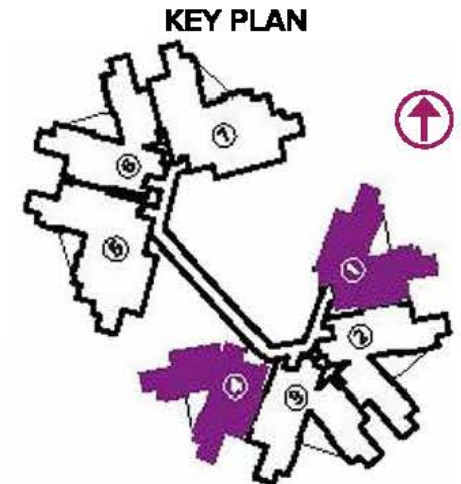
3,800 Sq.ft. / 353.14 Sq.m.

CARPET AREA

2,502 Sq.ft. / 232.41 Sq.m.

TYPICAL FLOOR PLAN

5 Bedrooms + 6 Toilets + Servant's Room
Penthouse - Type 1 (Lower Level)



SUPER BUILT-UP AREA

4,500 Sq.ft. / 418.14 Sq.m.

CARPET AREA

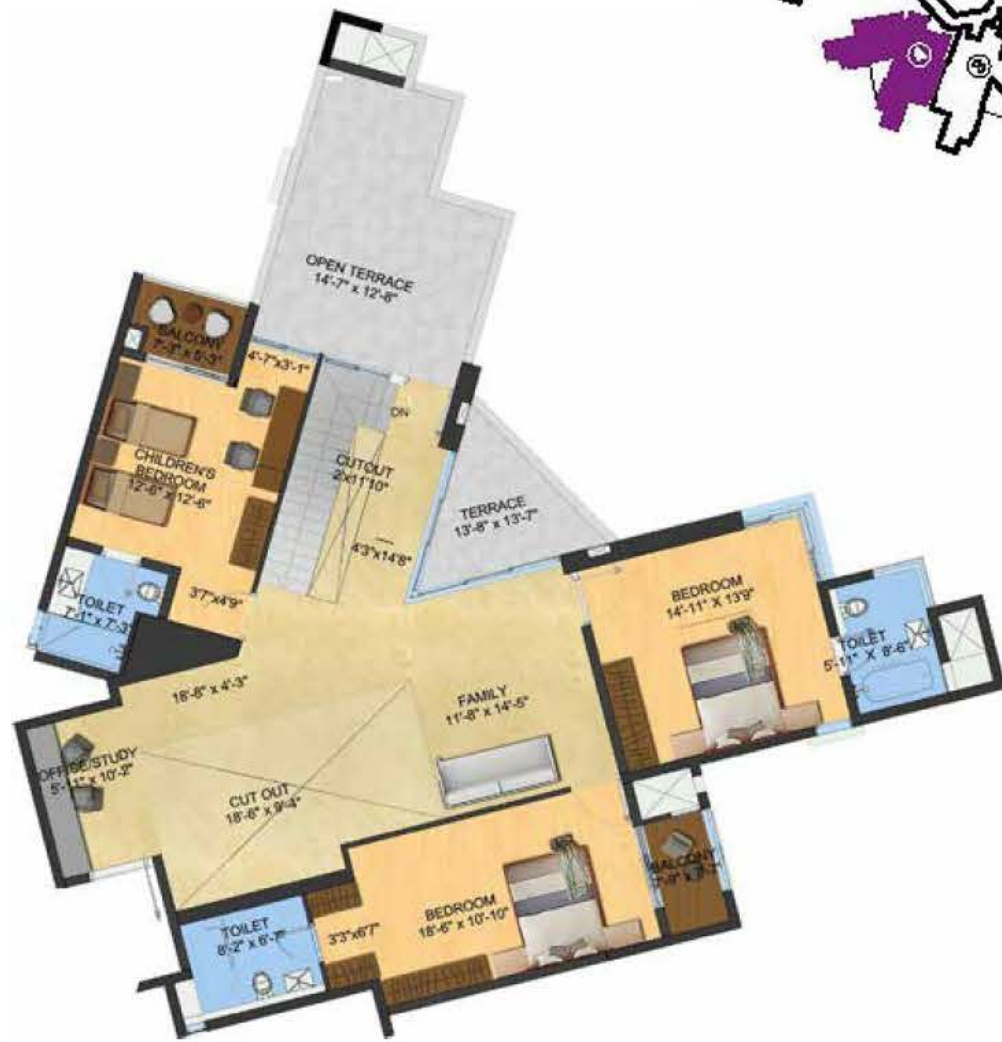
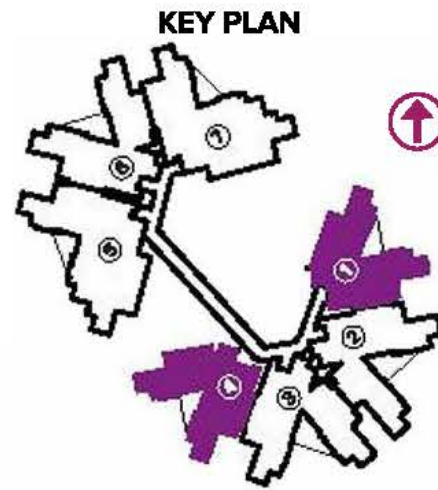
3,044 Sq.ft. / 282.80 Sq.m.

The information depicted herein viz., master plans, floor plans, furniture layout, fittings, illustrations, specifications, designs, dimensions, rendered views, colours, amenities and facilities etc., are subject to change without notifications as may be required by the relevant authorities or the developer's architect, and cannot form part of an offer or contract. Whilst every care is taken in providing this information, the Developer cannot be held liable for variations. All illustrations and pictures are artist's impression only. The information are subject to variations, additions, deletions, substitutions and modifications as may be recommended by the company's architect and/or the relevant approving authorities. The Developer is wholly exempt from any liability on account of any claim in this regard. (1 square metre = 10.764 square feet). E & OE.

The information depicted herein viz., master plans, floor plans, furniture layout, fittings, illustrations, specifications, designs, dimensions, rendered views, colours, amenities and facilities etc., are subject to change without notifications as may be required by the relevant authorities or the developer's architect, and cannot form part of an offer or contract. Whilst every care is taken in providing this information, the Developer cannot be held liable for variations. All illustrations and pictures are artist's impression only. The information are subject to variations, additions, deletions, substitutions and modifications as may be recommended by the company's architect and/or the relevant approving authorities. The Developer is wholly exempt from any liability on account of any claim in this regard. (1 square metre = 10.764 square feet). E & OE.

TYPICAL FLOOR PLAN

5 Bedrooms + 6 Toilets + Servant's Room
Penthouse - Type 1 (Upper Level)



SUPER BUILT-UP AREA

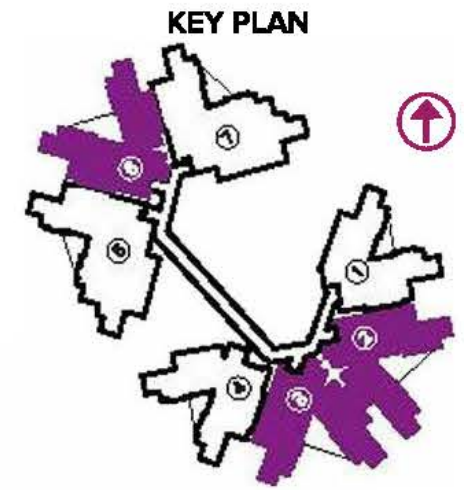
4,500 Sq.ft. / 418.14 Sq.m.

CARPET AREA

3,044 Sq.ft. / 282.80 Sq.m.

TYPICAL FLOOR PLAN

5 Bedrooms + 6 Toilets + Servant's Room
Penthouse - Type 2 (Lower Level)



SUPER BUILT-UP AREA

5,030 Sq.ft. / 467.39 Sq.m.

CARPET AREA

3,412 Sq.ft. / 316.97 Sq.m.

The information depicted herein viz., master plans, floor plans, furniture layout, fittings, illustrations, specifications, designs, dimensions, rendered views, colours, amenities and facilities etc., are subject to change without notifications as may be required by the relevant authorities or the developer's architect, and cannot form part of an offer or contract. Whilst every care is taken in providing this information, the Developer cannot be held liable for variations. All illustrations and pictures are artist's impression only. The information are subject to variations, additions, deletions, substitutions and modifications as may be recommended by the company's architect and/or the relevant approving authorities. The Developer is wholly exempt from any liability on account of any claim in this regard. (1 square metre = 10.764 square feet). E & OE.

The information depicted herein viz., master plans, floor plans, furniture layout, fittings, illustrations, specifications, designs, dimensions, rendered views, colours, amenities and facilities etc., are subject to change without notifications as may be required by the relevant authorities or the developer's architect, and cannot form part of an offer or contract. Whilst every care is taken in providing this information, the Developer cannot be held liable for variations. All illustrations and pictures are artist's impression only. The information are subject to variations, additions, deletions, substitutions and modifications as may be recommended by the company's architect and/or the relevant approving authorities. The Developer is wholly exempt from any liability on account of any claim in this regard. (1 square metre = 10.764 square feet). E & OE.

TYPICAL FLOOR PLAN

5 Bedrooms + 6 Toilets + Servant's Room
Penthouse - Type 1 (Upper Level)



SUPER BUILT-UP AREA

5,030 Sq.ft. / 467.39 Sq.m.

CARPET AREA

3,412 Sq.ft. / 316.97 Sq.m.

TYPICAL FLOOR PLAN

5 Bedrooms + 6 Toilets + Servant's Room
Penthouse - Type 3 (Lower Level)



SUPER BUILT-UP AREA

5,540 Sq.ft. / 514.44 Sq.m.

CARPET AREA

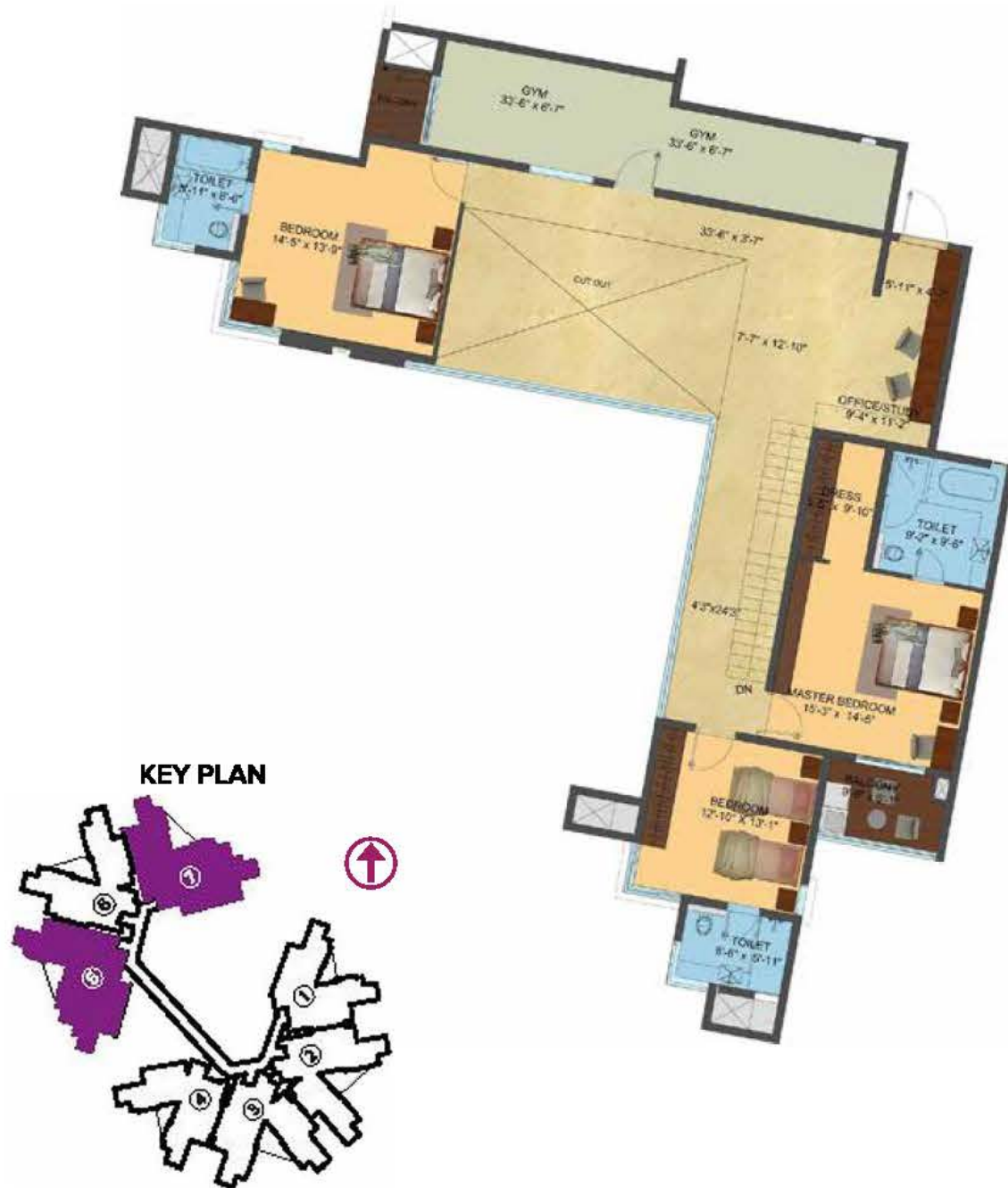
3,863 Sq.ft. / 358.91 Sq.m.

The information depicted herein viz., master plans, floor plans, furniture layout, fittings, illustrations, specifications, designs, dimensions, rendered views, colours, amenities and facilities etc., are subject to change without notifications as may be required by the relevant authorities or the developer's architect, and cannot form part of an offer or contract. Whilst every care is taken in providing this information, the Developer cannot be held liable for variations. All illustrations and pictures are artist's impression only. The information are subject to variations, additions, deletions, substitutions and modifications as may be recommended by the company's architect and/or the relevant approving authorities. The Developer is wholly exempt from any liability on account of any claim in this regard. (1 square metre = 10.764 square feet). E & OE.

The information depicted herein viz., master plans, floor plans, furniture layout, fittings, illustrations, specifications, designs, dimensions, rendered views, colours, amenities and facilities etc., are subject to change without notifications as may be required by the relevant authorities or the developer's architect, and cannot form part of an offer or contract. Whilst every care is taken in providing this information, the Developer cannot be held liable for variations. All illustrations and pictures are artist's impression only. The information are subject to variations, additions, deletions, substitutions and modifications as may be recommended by the company's architect and/or the relevant approving authorities. The Developer is wholly exempt from any liability on account of any claim in this regard. (1 square metre = 10.764 square feet). E & OE.

TYPICAL FLOOR PLAN

5 Bedrooms + 6 Toilets + Servant's Room
Penthouse - Type 3 (Upper Level)



SUPER BUILT-UP AREA

5,540 Sq.ft. / 514.44 Sq.m.

CARPET AREA

3,863 Sq.ft. / 358.91 Sq.m.

SPECIFICATIONS

COMMON AREAS

Waiting Lounge: Imported marble flooring

Entrance Lift Lobby / Staircases: Granite / Vitrified tile flooring

RESIDENCES

Living / Dining / Family / Kitchen: Engineered Marble

BEDROOM

Laminated wooden flooring

KITCHEN

Provision for modular kitchen

Provision for water heater and water purifier

Reticulated gas connection

BALCONY / DECK

Outdoor patio in Matt finish vitrified tile

BATHROOMS

Anti-skid tiles

CP Fittings: GROHE or equivalent

Sanitary Ware: Duravit or equivalent

UTILITY

Matt finish vitrified tiles

Provision for washing machine and dishwasher

DOMESTIC HELP ROOM & BATHROOM

Ceramic tile flooring

DOORS & WINDOWS

Apartment main door in Teakwood frame with designer shutter

Bedroom doors in pre-engineered frames / pre-engineered shutters polished

Windows: Anodised aluminium with glazing

Utility: UPVC door with sliding glass shutter

PAINT

Textured finish paint for exterior, acrylic emulsion paint for interior ceilings & walls

Acrylic emulsion paint / oil-bound distemper for common areas

ELECTRICAL

Concealed PVC conduit with copper wiring

POWER SUPPLY

8 kW for a 3-bedroom apartment

10 kW for a 4-bedroom apartment

15 kW for a penthouse

STANDBY POWER

100% DG backup of emergency power for lifts, pumps and common lighting apartments

DG backup

3 kW for a 3-bedroom apartment

4 kW for a 4-bedroom apartment

5 kW for a penthouse

LIFTS

6 passenger lifts of 13-person capacity - Toshiba or equivalent

2 service lifts

MISCELLANEOUS

Smart Home Fixtures: Video door phone and buzzer for security control and intercom TV connection & internet on subscription basis

Beautifully landscaped gardens and open recreation area with children's play area

Well equipped clubhouse with gymnasium, snooker, indoor games room, reading room, multipurpose hall, swimming pool and badminton court - on membership (For residents only)

AIR-CONDITIONING

VRV Air conditioning

The information depicted herein viz., master plans, floor plans, furniture layout, fittings, illustrations, specifications, designs, dimensions, rendered views, colours, amenities and facilities etc., are subject to change without notifications as may be required by the relevant authorities or the developer's architect, and cannot form part of an offer or contract. Whilst every care is taken in providing this information, the Developer cannot be held liable for variations. All illustrations and pictures are artist's impression only. The information are subject to variations, additions, deletions, substitutions and modifications as may be recommended by the company's architect and/or the relevant approving authorities. The Developer is wholly exempt from any liability on account of any claim in this regard. (1 square metre = 10.764 square feet). E & OE.

The information depicted herein viz., master plans, floor plans, furniture layout, fittings, illustrations, specifications, designs, dimensions, rendered views, colours, amenities and facilities etc., are subject to change without notifications as may be required by the relevant authorities or the developer's architect, and cannot form part of an offer or contract. Whilst every care is taken in providing this information, the Developer cannot be held liable for variations. All illustrations and pictures are artist's impression only. The information are subject to variations, additions, deletions, substitutions and modifications as may be recommended by the company's architect and/or the relevant approving authorities. The Developer is wholly exempt from any liability on account of any claim in this regard. (1 square metre = 10.764 square feet). E & OE.